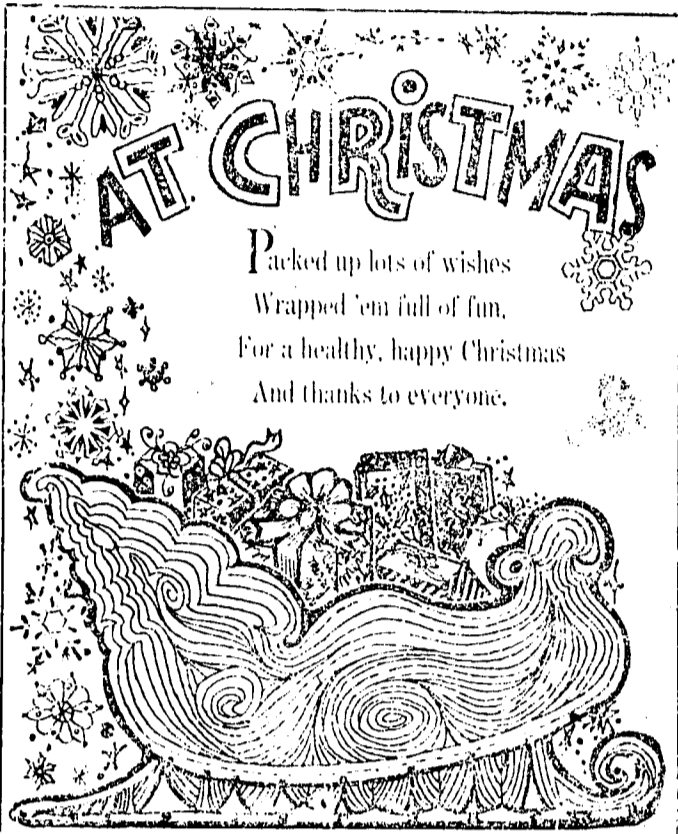


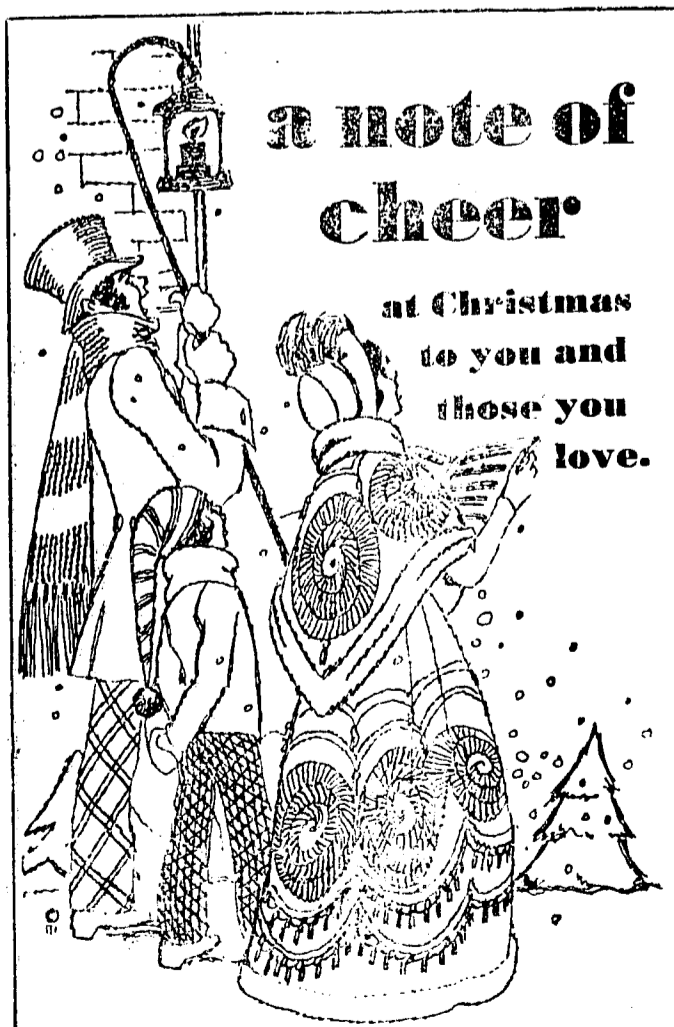
BENDELS MEATS
TROY -- IDAHO



TEDS ARCO STATION
JULIAETTA -- IDAHO



KENDRICK ROCHDALE
KENDRICK -- IDAHO



FIRST BANK OF TROY
TROY -- IDAHO

BATTERY KEY INGREDIENT TO COLD-WEATHER STARTS

Weak batteries and poorly-tuned engines should account for 80 percent of this winter's emergency road service calls, according to the Inland Automobile (AAA) Association.

"The heart of the car's ignition system is the battery," says James C. Richards, AAA's Emergency Road Service Manager. "It must be in top condition during the winter because its job gets progressively harder as the temperature drops."

On a zero degree morning, a battery can deliver only 46 percent of its peak power. The engine it must start requires 2 1/2 times more power to start than on an 80 degree day.

"Leaving headlights on after parking the car, loose or defective alter-

nator belts and damaged cables are the main causes for battery failure," Richards said. "In some instances the battery's power was drained in a futile effort to start a balky engine."

According to Richards, this is what happens to an engine in cold weather.

"The cold temperatures reduce the supply of electrical current available from the ignition system. The same frigid temperatures increase the spark plug's need for high voltage to fire the fuel mixture. In order to achieve dependable starting, all components must be in top shape."

The AAA officers said on conventional batteries it is crucial to inspect fluid level regularly, keep the battery free of acid corrosion buildup (with a baking soda and water solution) and make sure cable connections and hold-down clamps are



M. F. Hedler

KENDRICK, IDAHO



DEANS ELECTRIC

Dean and Kathy Watson and Boys
KENDRICK -- IDAHO



ABRAMS HARDWARE
KENDRICK -- IDAHO

CHRISTMAS SIMULCASTS TO HIGHLIGHT HOLIDAYS

Moscow To celebrate the holidays KUID-TV and KUID-FM will offer four special simulcasts during the Christmas season. Viewers can watch the Christmas programs simultaneously on KUID-TV Channel 12 and listen to them in stereo on KUID-FM at 91.7 on the FM radio band.

On Wed., Dec. 17, at 7:30 p. m., "The Festive Bach," performed by the chorale and orchestra from the 10th annual University of Oregon Summer Festival of Music, will be broadcast on both KUID-TV and KUID-FM in simulcast.

UI FALL SEMESTER ENDS DECEMBER 19

Moscow With visions of sugarplums and a few days' respite dancing in their heads, UI students will bend their thoughts to holidays and home as the fall semester ends at 5:30 p. m., Friday, December 19.

Final examinations begin Monday, Dec. 15 and end on Friday, Dec. 19. Classes will resume for the new semester on Jan. 11 after pre-registration advising and registration on Jan. 12 and 13.

A rousing performance of gospel music featuring Edwin Hawkins and the Hawkins family with the Oakland Symphony Orchestra is the 2nd of the special simulcasts scheduled for Wed., Dec. 17, at 8 p. m.

"The Christmas Song," featuring popular carols and traditional songs will be simulcast Sunday, Dec. 21, at 2:30 p. m. Mel Torme leads an all-star cast in a warm and senti-

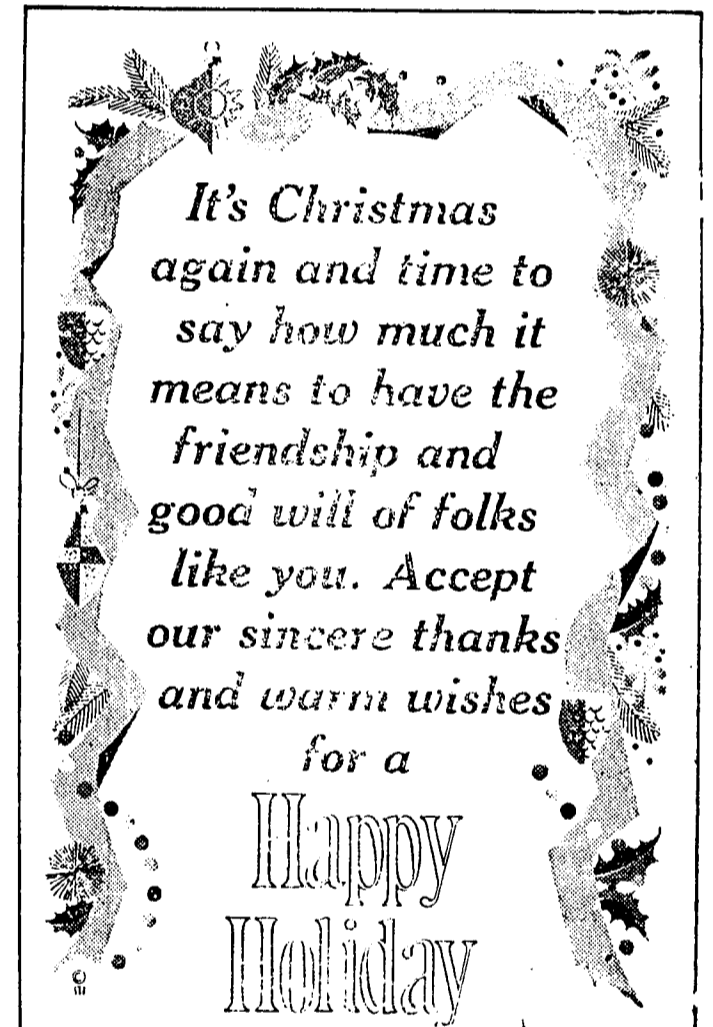
mental program for the holidays. In the tradition of Christmas, KUID will simulcast Handel's "Messiah" Christmas Eve, Dec. 24 at 8 p. m. The two-hour holiday special features the 300-member Oratorio Society of Utah performing this Handel masterpiece. Guest conductor is Samuel Salgo. The setting is the Mormon Tabernacle in Salt Lake City.

ment and clean. Newer maintenance-free batteries are self-contained and some have indicator calls which should be checked regularly, Richards said.



Randy Noble - Farm Bureau Insurance

KENDRICK -- IDAHO



FEY BROS. REPAIR

ROY & HELEN FEY, HARLAN & MARIE FEY & SHARON HARRIS



E. L. Farrington

JULIAETTA -- IDAHO

TOWARDS AN ENERGY EFFICIENT CHRISTMAS

by David L. Gottlieb, NIEES Staff
Everybody appears to be worried about energy these days and these fears are easily justifiable. The price of home heating fuels and gasoline has more than doubled in the past two years and may go higher. The residents of the Pacific Northwest have been blessed with cheap electricity until recently. With the current decline in the potential for additional hydroelectric generation, a quadrupling of electric rates in the Pacific Northwest has been predicted by the Bonneville Power Administration and the region's utilities. For many people, the escalating cost of energy creates problems. We all realize that comfort and warmth are very important during the cold season. Good health depends on comfort and health, particularly the health of the elderly, small children, the

poor, and those individuals who are currently sick. Heating costs are rising at a time when inflation has driven up the price of other necessities such as food and some may be faced with the decision of going hungry or being cold. This Christmas season we can save energy and help one another by wasting less of our precious and finite resources.
True, Christmas is a time of celebration, but it also signifies the beginning of the cold winter season. So before you purchase the electric egg beater, gas operated snow blower, electric games, hair dryers, or the myriad of additional "high powered plug-in, flick-of-the-switch presents advertised during the Christmas buying season, of the amount of energy these devices will consume. For every energy devouring gift idea you may have for your loved ones and friends, at least one alternative exists that is not only energy efficient

but is as pleasurable, and probably more practical than its power driven counterpart.

For example, it takes slightly more time to open a can of spaghetti sauce with an old-fashioned, manual can opener, but unless your household is planning on opening a food catering service, the speed gained by an electric can opener is minimal while both accomplish the same task. The advantages of a manual can opener is three fold: First, it's cheaper and needs less repairs; second, it builds up muscles in the fingers; and finally, the manual appliance uses no energy. So before you buy motorized devices, be sure to consider a hand operated version. If after considering the alternatives, you still find you need to purchase electrical appliances or tools, be sure to check efficiency ratings. Buy the piece of merchandise that uses less electricity for the same amount of output.

Here are other hints for buying energy efficient gifts. Buy products that are durable. More energy is required to place objects. Buy equipment not only on the basis of the initial purchase cost but also on the basis of operating costs. More energy efficient items usually cost slightly more but over the lifetime of the merchandise, the difference will more than made up in lower operating costs. When you buy fabrics or garments, choose those that can be washed in cold water and require little or no ironing. If you are shopping for an unusual gift, telephone the store and ask to see if it is carried. Otherwise you may waste energy and time traveling and will only be disappointed. Buy products made of recycled materials or materials that are recyclable such as steel, aluminum, paper and glass. Products made from virgin materials consume more energy in production states than do those items made from recycled or reclaimed materials. Producing steel from scrap requires only 25 percent of the energy it would take when using virgin natural resources; a product made from recycled aluminum requires less than ten percent of the energy that would be needed to make the same product from scratch.

For the creative individual on your gift list or for one who is just curious, pick up a book on alternative energy technologies or weatherization, or your friends who have wood stoves consider a stack thermometer. This device will not only inform you if the stove is burning too hot or cold, but it will be helpful in deciding if you need to improve stove efficiency, safety, or retard any creosote and residues from building up in the chimney. Magnets hold the thermometer to the stove pipe making for quick and simple installation. To improve the car's gas mileage, or to encourage bicycle riding, put a tire pressure gauge in the Christmas stocking. Properly inflated tires means better gas mileage and safe driving. Bicycle accessories

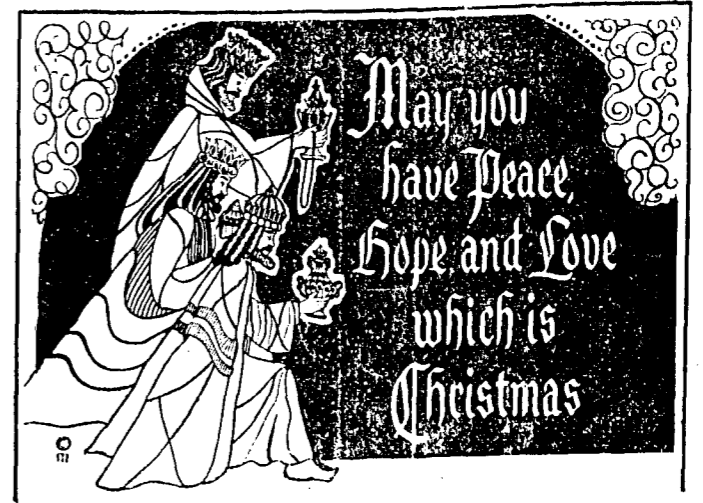
are numerous, and there are even trailer attachments that hitch to the rear of your bike so you can leave your car at home when you go on shopping sprees.

If you're planning on a large present for the family such as a second or third car, a motor boat, a snowmobile, or even a trash masher, you should first consider the rising prices of both our depleting resources and repair costs. A feasible option is outfitting your family with non-motorized forms of transportation such as cross-country skis, bicycles, canoes, and roller skates. The only fuel these latter modes of transportation use is the mornin oatmeal you had for breakfast which propels your body and keeps you warm. These have a further advantage of keeping your family in shape.

Large presents such as trash mashers takes your twenty pounds of garbage and in return gives you back not only twenty pounds of garbage but a higher electric bill. Perhaps this Christmas it is time to implement a recycling project in your house. Garbage is only what we throw away. Call your nearest recycling center and find out about the feasibility of recycling.

Energy efficient gift ideas are too numerous to be mentioned here but when buying your gifts, be a smart

(Continued on page 5)



PRATTS SERVICE & REPAIR

BOB AND LUCILLE PRATT
KENDRICK -- IDAHO



There's no time quite like Christmas for remembering all the friends we cherish, and for wishing them all

a Happy Holiday

Lewiston Grain Growers, Inc.

KENDRICK, IDAHO

TALLY HO!

May your holidays be a gathering of love and togetherness! We greet our friends and wish you joy at Christmas.

Potlatch Telephone Co.

Kendrick Idaho

GREETINGS
Hoping your holidays will be bright with the light of Christmas.
Sincere appreciation

Bob's Garage

JESS AND WILDA
Kendrick, Idaho

It's Pleasin' Season the dairy way

Season's Greetings and best wishes from your dairymen friends who would like you to try these delicious holiday recipes.

CONFETTI CHEDDAR LOG

1 pkg. (3 oz.) cream cheese (softened)
2 cups (8 oz.) shredded Cheddar cheese
¼ cup pitted chopped ripe olives
2 tablespoons chopped pimiento, drained
2 tablespoons chopped green pepper
1 teaspoon Worcestershire sauce
Chopped slivered almonds
Beat cream cheese until fluffy. Beat in Cheddar cheese. Stir in olives, pimiento, green pepper and Worcestershire; blend well. Shape into roll on waxed paper. Coat well with almonds. Cover and chill several hours to allow flavors to blend. Allow to stand at room temperature about 30 minutes before serving with assorted crackers.

QUICK ENGLISH TOFFEE

Yield: 1½ dozen pieces
½ cup chopped pecans
½ cup (1 stick) butter
½ cup firmly packed brown sugar
½ cup semi-sweet chocolate pieces
Sprinkle nuts in buttered 9-inch pie plate. Melt butter in a heavy 1½-quart saucepan; add sugar. Cook over medium heat, stirring constantly, to 290°F. on candy thermometer (hard crack stage). Pour toffee over nuts. Sprinkle with chocolate pieces; when melted, spread with a spatula. Cool. Refrigerate to set chocolate. Break into pieces. Wrap and store in refrigerator.

UNITED DAIRYMEN OF IDAHO

PROMART HOME CENTER
HARDWARE STORES

the Right Gift Priced Right

GET PRO ADVICE PLUS A REAL GOOD PRICE

ARROW FAMOUS T-50 STAPLE GUN

IDEAL GIFT PRICED RIGHT **13.99**

Takes 6 sizes of staples including cutting staples. Suitable for commercial use. (122)

Weller Soldering Gun Kit

Weller SOLDERING GUN KIT WITH CASE **16.99**

The world's largest soldering gun kit is sure to please him this Christmas. Kit contains a dual heat 100/140 watt soldering gun, 7 accessories, and storage case. (115)

FREE GIFT WRAPPING — FREE PARKING ON KENDRICK'S MAIN STREET MALL

Black & Decker
No. 71-055

ACCURATE DRILLING DRILL GUIDE **9.99**

FITS MOST 1/8" & 1/4" DRILLS
Gives you true 90° holes, edge drilling and drills 45 degree corner angles. (86)

DUST BUSTER VACUUM CLEANER

PRICED RIGHT **24.99**

This cordless, rechargeable mini-vacuum can be used anywhere—for spills, crumbs, etc.—and for cleaning the car. When you are through, put it back in its handy storage unit where it automatically recharges. (6)

10" Silverstone Saute Pan, was \$13.29 . NOW \$8.99

Sunbeam Blower/Dryer, NOW \$11.99

2-Slice Sunbeam or G. E. Toasters, \$19.99

Oster Automatic Bag Sealer, \$16.99

ABRAMS HARDWARE

"Your Home Town Hardware"

PHONE 289-4051

KENDRICK, IDAHO

consumer and don't pay for excess packaging. If you buy an item that comes in a simple package without all of the frills, you are paying for the merchandise. An item wrapped in multi-layered boxes may mean that you get more in throw-away goods for your dollar and less in the actual piece of merchandise.

Handcrafted items usually use less energy to manufacture than factory-made goods, and are often aesthetically and functionally superior.

Perhaps one of the best gifts you can give your family and the house you live in comes in the form of weatherization projects and alternative energy systems. The possibilities are limited only by your imagination, your home's surrounding territory, and the location and siting of your house. Potentials include numerous types of passive and active solar air and hot water collectors, photovoltaics, micro hydro devices,

wind generators, wood stoves and methane digesters to name a few.

According to Cynthia McKean, Outreach Coordinator for the North Idaho Energy Extension Service — (NIEES is a service of the Idaho Office of Energy). "It is of the utmost importance that all houses are weatherized and insulated before installing any alternative energy equipment. With proper weather-proofing, both your current heating system and any future systems will perform with greater efficiency."

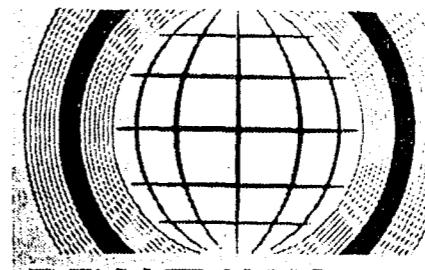
Ms. McKean further states that, "Investing in alternative energy and conservation techniques not only are gifts to your family and house, but most probably means a belated Christmas gift from Uncle Sam and the folks at the IRS." Federal and state tax incentives have been provided to encourage energy conservation and the development of alternative energy sources. If you are a taxpayer and have installed energy saving materials in your house, you can receive

federal tax credits amounting to fifteen percent of the first \$2,000 spent on qualifying conservation equipment, up to a maximum of \$300 credit. If you invest in solar or wind energy, the returns from Uncle Sam are even greater with federal tax credits of up to 30 percent of the first \$2,000 spent and twenty percent on the next \$8,000 spent. Residents of Idaho are also given a gift from the state if they invest in conservation or alternative energy technology. Idaho homeowners may deduct from gross income (in the form of an itemized deduction) the cost of purchasing and installing insulation, thermal or storm windows and doors, and weatherstripping. You may also deduct your expenses for alternative energy systems using solar, wind, geothermal or wood energy to provide heating, cooling, or electricity to your home. You may claim 40 percent for the first year and 20 percent for three succeeding years, not to exceed \$5,000 for any one taxable year.

Besides the billowing in of Old Man Winter, the Christmas holiday also marks the beginning of a new year. One of the healthiest New Year's resolutions we should all subscribe to is promising to use less energy. One way to start this resolution off is to carpool to Christmas and New Year's parties.

One last suggestion for an energy efficient Christmas may actually add a bit of romance to your life and bring your family closer. Before you sit down to Christmas dinner shut off the television, radio and stereo, turn the lights out in every room and light the dinner candles. This holiday season save energy if you change your life; and your neighbors through out the community, country, and world, will thank you for not wasting our scarce resources.

For more information on energy call the North Idaho Energy Extension Service at 882-3470 or stop by their office located one flight up at 207 South Washington in Moscow.



REALTY WORLD
APEX REALTY

519 1/2 S. Main St.
Troy, Idaho
835-5172

Betty Jarvis 826-3260
Betty Olson 835-2873
Ron Lichti 877-1191
Merlin Hepler 835-3229

- Deary, 4-bedroom, 1 acre country estate, \$111,000
- Elk River—3-bedroom, double lot with doll house \$ 22,000
- Juliaetta—energy efficient 3-bedroom, year old home \$ 37,500
- Juliaetta—3-bedroom, full basement, Mint condition \$ 60,000
- Kendrick—4-bedrooms & country charm, RV carport, shop \$ 34,000
- Troy— 4 bedroom, 2 bath overlooking park \$ 48,000

MOSCOW OFFICE 602 S. MAIN 883-0510



HOLY HOLY Let us rejoice in loving adoration as we celebrate and remember the miracle of Christmas.

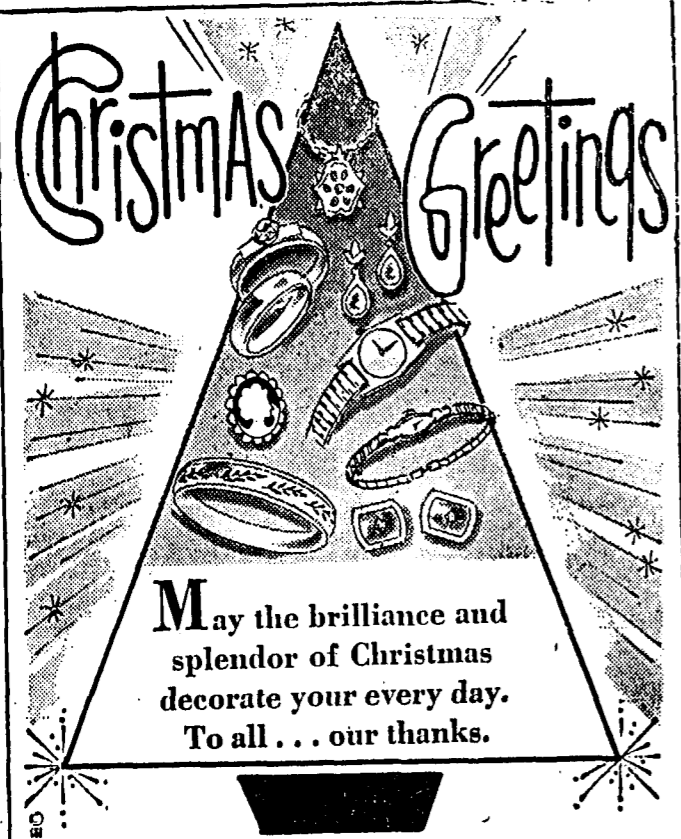
KENDRICK GARAGE
KENDRICK -- IDAHO



CHEERS at CHRISTMAS
Our customers are something to crow about! We say thanks and hope your holidays are wreathed in joy!

R. E. MAGNUSON INSURANCE

Kendrick, Idaho



Christmas Greetings
May the brilliance and splendor of Christmas decorate your every day. To all . . . our thanks.

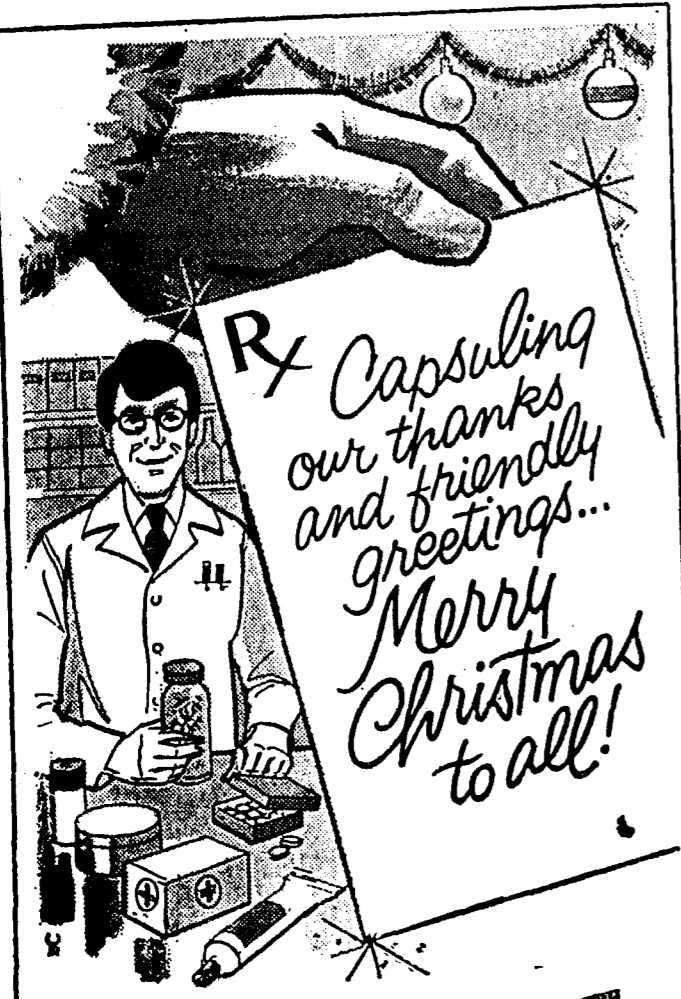
KENDRICK VARIETY & GIFT STORE
KENDRICK -- IDAHO



MERRY CHRISTMAS
Have a bell ringing holiday! And thank you for being such good friends.

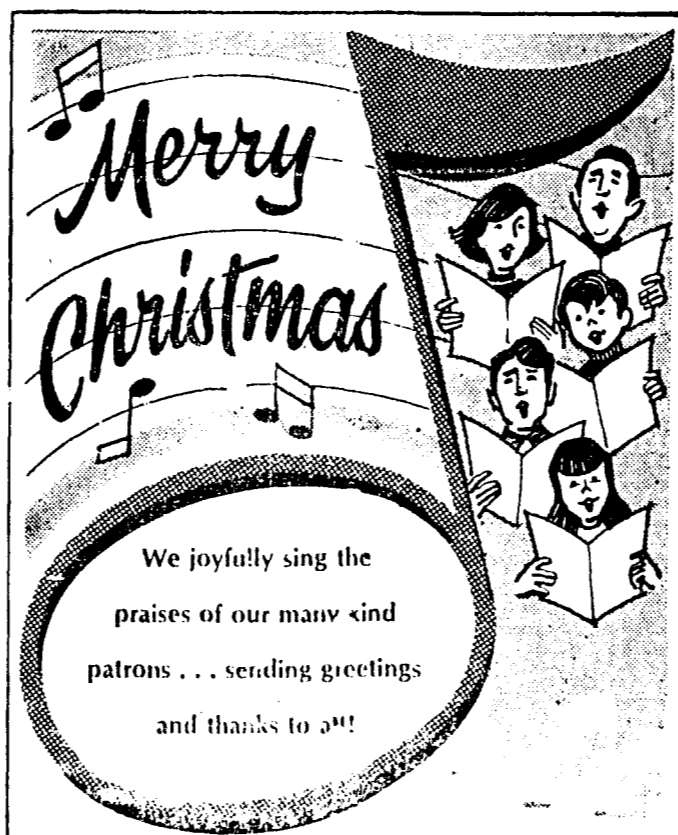
FLEMING TRUCK & EQUIPMENT CO.

KENDRICK -- IDAHO



Rx Capsuling our thanks and friendly greetings... Merry Christmas to all!

RED CROSS PHARMACY
KENDRICK -- IDAHO



Merry Christmas

We joyfully sing the praises of our many kind patrons . . . sending greetings and thanks to all!

BURT'S CAFE

KENDRICK -- IDAHO

PEACE ON EARTH



Offering a prayer of thanks and hoping that the beauty of the Holy Birth will surround you at Christmastide.

CULPEPPER CLOTHING CO.

KENDRICK -- IDAHO

HOLY, HOLY



Rejoice in the Glorious Tidings of His Birth! We join you in thought and with gratitude, at this time of worship and thanksgiving.

BROCKE AND SONS, INC.

KENDRICK -- IDAHO

6 NEW SIGNS WILL SHOW SOME '81 FISHING RULES

The Department of Fish & Game will be posting "International Symbol" type signs on some waters in 1981 to show anglers at a glance where special regulations are in force.

All of the visual aids similar to the likes of "no left turn" highway sign—are shown in the printed regulations for next year along with brief explanations of each special rule. The various signs, six in all, will describe:

CLOSED TO ALL FISHING: Posted where waters are closed to fishing to protect concentration of fish for angler safety or for fishery management.

OPEN TO FISHING: This sign will appear in areas such as fish hatchery property with some waters open to fishing. Season dates or other regulations may be listed on

the sign if they differ from the general season or regulations.

NO MOTORS WATER: A sign with a slash across a silhouette of an outboard motor and fish. It will be posted where motors are prohibited to prevent disturbance of other anglers or wildlife and to reduce pollution, erosion or other environmental damage.

CATCH-AND-RELEASE: The symbols show that artificial flies or lures with single barbless hooks are required and the fish must immediately be returned unharmed to the water. This regulation, "in effect on about 300 miles of rivers and streams, has been very successful in providing better fishing for large, wild trout," according to the explanation.

WILD TROUT WATER: Look for this sign on portions of the Coeur d'Alene, St. Joe and South Fork

PREVENTING COLD WEATHER WON'T STARTS

Before sub-zero temperatures strike the Inland Northwest this winter, motorists can take precautions to help guarantee easy-to-start vehicles, according to the Inland Automobile (AAA) Association.

"Keep gas tanks filled to avoid fuel line freeze-up and park the car or pickup in the garage if possible," advises James C. Richards, AAA's Emergency Road Service Manager.

Boise Rivers, Wild Trout waters are managed to allow fish to become large enough to spawn before they can be legally caught and kept, using only artificial flies or lures with single barbless hooks. The bag limit is three trout, each at least 13 inches long, and all others must be immediately returned unharmed to the water.

FLY-FISHING ONLY: These waters are either on private property or state park property which was given to the state with the condition that only fly-fishing be allowed. It is Fish and Game Commission policy to confine the fly-fishing only regulation to such areas.

The 1981 printed regulations have another new feature which pictures 10 species of fish to aid in identification. "Anglers must be able to identify their catch, because limits vary on the different species of game fish," the regulations explain.

"If a garage is not available, park the vehicle with its back to prevailing winds and place a blanket over the hood."

Richards said the wind-chill factor on engine fluids can have a substantial affect on the vehicle's starting characteristic. At zero degrees and a with a 10 mile per hour wind, the wind chill factor will be minus 20 degrees. He said temperatures at five-degree increments plus or minus from zero degrees will have a near corresponding wind-chill factor from minus 20 degrees. "Any temperature below 32 degrees will have some deterioration in starting capabilities in most vehicles," Richards added.

Before starting the engine, motorists should make sure all electrical accessories . . . radio, heater, defrosters, lights, etc. . . . are off. Turn the key on and depress the gas pedal to the floor once and let it up all the way. (This sets the automatic choke in cars without manual chokes). Don't keep the starter turning over for more than 10 seconds at a time, and resist the temptation to pump the accelerator.

If the carburetor floods (gasoline smell is a tell-tail sign), shut the ignition off, push the accelerator to the floor and hold it there for one

minute. This allows excess gas to pass through the manifold. Resume previous starting procedure without pumping gas pedal.

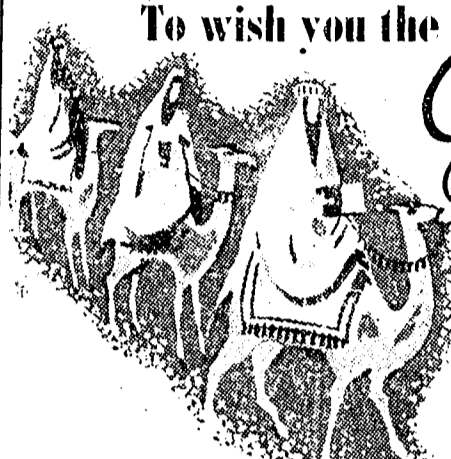
If your vehicle's fuel line has a tendency to freeze-up in the winter, add a pint of fuel line anti-freeze with every tank of gas. This solution, being of alcohol base, absorbs water and contributes to easier cold weather starting.

"One sure fire method many motorists have taken is to install one of the several types of engine heaters on their vehicles," Richards said. "These come as in-line heater hose heaters, lower radiator hose heaters, dip stick heaters, headbolt heaters, oil pan heaters and battery plate heaters; and most are thermostatically controlled," he added.

**MORE JOBS
BETTER PRODUCTS
LOWER PRICES**

Advertising works for you!

To wish you the *Joy* of this Holy Season. Sincere gratitude.



FIRST SECURITY BANK
ROSELLE, TEDI, LE ANN and LEANN

MERRY Christmas

We thank you for your patronage and hope you will be surrounded by good fortune through this festive season.



ASGROW SEED CO.
BILL, TERRY, JIM, RON KAROL AND CHARLENE

CHRISTMASTIDE


It's our favorite time for saying thank you for your friendship and loyalty and for extending warm wishes to all.



D. F. SCHARNHORST - MOBIL OIL
DICK AND MARIE
BRUCE, HOLLI, LOUIS AND JACOB


THE JOYS OF CHRISTMAS

May Christmas bring friends to your fireside and peace to your home. In the glow of your friendship we extend sincere thanks.



GENESSEE UNION WAREHOUSE CO.
BILL, MIKE, MARIE, AND KATHY
CHARLES, LLOYD, LARRY, DENNIS, RON
ART, TOM, MARVIN, KEN
DAVE AND JOANN

A partridge... a pear tree... a sincere wish for your happiness... all sure signs pointing to a **Merry Christmas to All**



Qualey Repair
RAY QUALEY

JOY

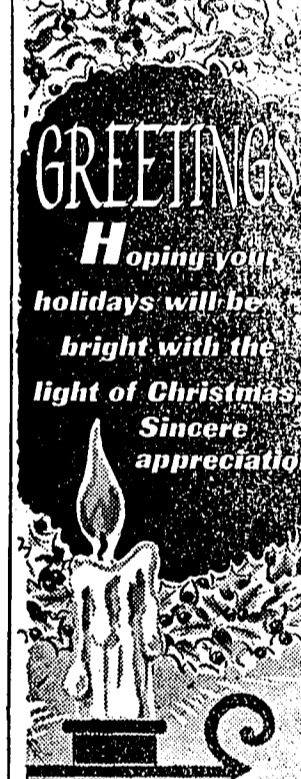
May your Christmas stocking be filled with all your favorite things... including our thanks.



Roach Construction
DUANE & JAY ROACH

GREETINGS


Hoping your holidays will be as bright with the light of Christmas. Sincere appreciation.



Pastime Tavern
HELEN AND RUSSELL CROMER

HARK

Have a perfectly heavenly holiday! Many thanks.



Corner Bar
RANDY AND DELORES HALL

May the blessings of the holy season fill you with peace and joy.



Genessee Meats
MARLYN, LORETTA and DAN CALLAHAN


With warm gratitude we wish you peace and ask His blessing for you this Yuletide.



Puregro Co.
MARVIN MOSER, MANAGER

Rejoice

Wishing you all the happiness this holy holiday can bring. May your Christmas be brightened by our thanks.



Springer Insurance
DON, KATHRYN & HAZEL

DING DONG DING


Hope your holidays chime with happiness, good health and good fortune! Our thanks.



McGregor Co.
ROGER KINYON, MANAGER


Joy to the World

May the blessings of the holy season fill you with peace and joy.



Broemeling Welding
LAWRENCE, GERTIE
DOUG, STEVE

May the lights on your tree reflect our thanks and bright wishes for a better than ever Christmas!



The Electric Shop
JOE, ALLISON, JOEL, LUCILLE

It's Christmas

Can't bear to wait another minute to wish you a Merry Christmas and to express our thanks.



Genessee Union 76 Service Station
WILLIS AND BEVERLY MOSER

Deck the Halls

Delivering a message of cheer and gratitude to all our wonderful friends.



GENESSEE FOOD CENTER
JOE, SHIRLEY, NANCY AND JAN

