





# GRAND OPENING SALE APRIL 3, 1965

9:00 A. M. TO 9:00 P. M. DOOR PRIZES - TREATS

2:00 P. M. DOOR PRIZE - HAIR DRYER

6:00 P. M. DOOR PRIZE - TRAVEL IRON

9:00 P. M. DOOR PRIZE - TRANSISTOR RADIO

**RED HOT SPECIAL NO. 1**  
**10 INCH FRY PAN**  
REG. PRICE \$14.95  
SALE \$8.95

**RED HOT SPECIAL NO. 2**  
**PORTABLE MIXER**  
REG. PRICE \$13.95  
SALE \$7.95

**RED HOT SPECIAL NO. 3**  
**DUTCH OVEN - TEFLON**  
REG. PRICE \$23.95  
SALE \$15.95

## COLOR TV SALE



**ADMIRAL®**  
The **SHELDON Model T1000**  
Color TV

Smart Contemporary table Color TV, featuring new Admiral-built 26,000-volt precision crafted horizontal chassis plus long range tuner with preset fine tuning. New 24 kt. gold precision wiring\* insures greater chassis reliability, new Electronic Color Balancer, new Color TV Contrast Control. Front Alnico V speaker. 23 1/8" h., 30 3/4" w., 19 1/2" d. Model T1000—Charcoal finish on metal.

\*5 micro inches of pure 24 kt. gold applied by electro deposition.

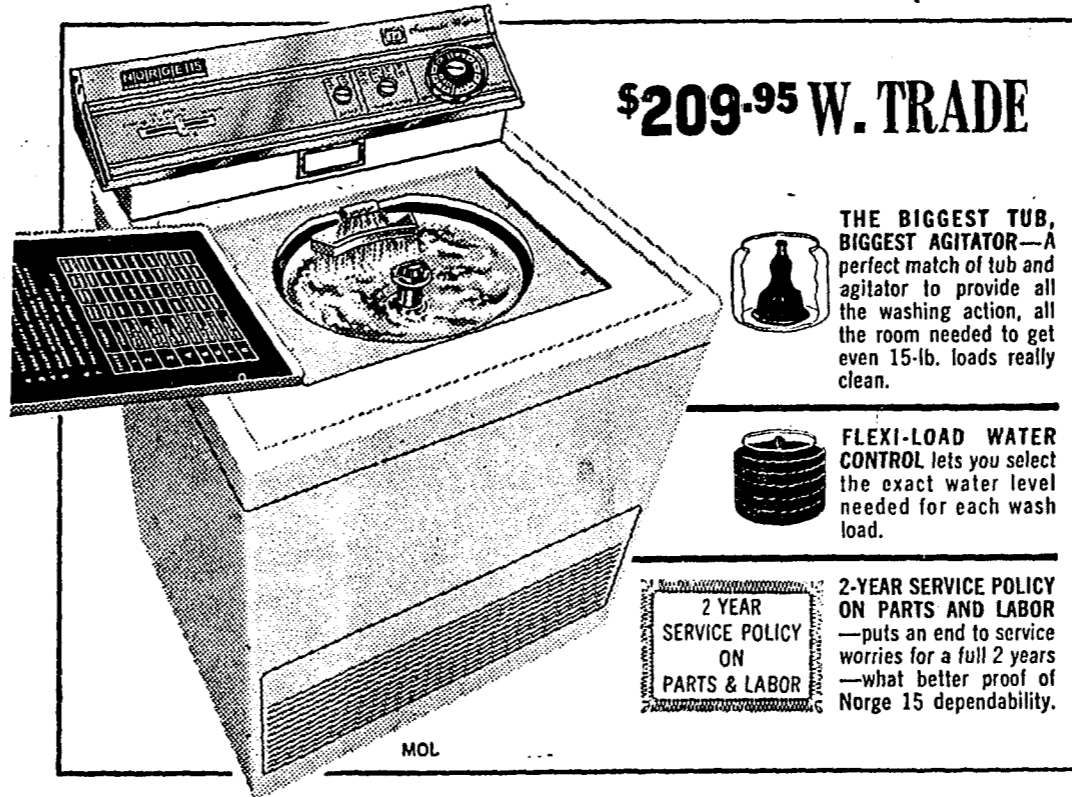
	Reg. Price	Sale Price	
CDU 2000	\$399.95	\$329.95	W. T.
CDU 2112	\$449.95	\$379.95	W. T.
CDU 2021	\$509.95	\$429.95	W. T.
LDU 2011	\$599.95	\$519.95	W. T.
LDU 2161	\$699.95	\$599.95	W. T.

## new Norge 15

Wash any 15-lb wash load. Even work clothes and bed linens, in the Norge 15. ■ Forget about special load sorting - Norge 15 is the true 15-lb. washer. And Flexi-Load water control lets you do little 2-lb. loads, too, with only the water and detergent you need—and no extra basket attachments.

■ Norge 15 is really any size washer you want it to be. ■ Norge has been making big-capacity washers longer than anybody. ■ Could be that's why Norge 15 washes more clothes in fewer loads—and why we offer a low-cost 2-year service policy on all parts and labor.

**...the true 15-lb. washer that does bigger loads so you do fewer loads**



**\$209.95 W. TRADE**

**THE BIGGEST TUB, BIGGEST AGITATOR**—A perfect match of tub and agitator to provide all the washing action, all the room needed to get even 15-lb. loads really clean.

**FLEXI-LOAD WATER CONTROL** lets you select the exact water level needed for each wash load.

**2 YEAR SERVICE POLICY ON PARTS & LABOR**—puts an end to service worries for a full 2 years—what better proof of Norge 15 dependability.

**WE SELL 'EM . . . WE SERVICE 'EM!!**

ADMIRAL TV AND APPLIANCES - NORGE APPLIANCES - KITCHEN AID DISHWASHERS

CHECK OUR PRICES AND TERMS BEFORE YOU BUY

# G. F. BROCKE & SONS, Inc.

PHONE 289-5982

TV STORE

KENDRICK

## HOOVER SPEAKS ON LAW ENFORCEMENT

Law enforcement, by the very nature of its responsibilities, has always been a handy scapegoat for those who seek public sympathy on controversial issues. As a frontline representative of government, law enforcement often bears the brunt of criticism - just or unjust leveled at constituted authority.

Admittedly, law enforcement has its short comings, as do all professions. Contrary to some viewpoints, however, it is not responsible for all the grievances with which it is charged. Furthermore, wholesale harassment of law enforcement is not an antidote for all the troublesome issues facing communities throughout the country.

A questionable move currently being championed in some localities is the establishment of civilian review boards to hear complaints against law enforcement officers. To a large degree, these panels would consist of appointed individuals who are generally inexperienced and uninformed in law enforcement and police administration.

When carefully considered, it is clear this drive for external boards is an ill-advised maneuver. It amounts to the usurpation of authority rightfully belonging to the police commander. It is a practice which could damage effective law enforcement and reduce the orderly processes of community life to petty bickering, suspicion, and hatred. The police executive cannot become a mere pawn of bureaucratic committees. He must have full responsibility for the performance, discipline, and control of his officers.

Valid objection to external review boards are too numerous and extensive to be shunted aside. Such panels represent a backward step for law enforcement toward ineptness and mediocrity. Moreover, one of the major weaknesses of these boards is their inherent political overtones. In many instances, appointments will be made for political expediency rather than merit, and every faction, clique, group, and organization which has an ax to grind will demand representation. If there is one thing career police executives have learned over the years, it is that politics has no place in effective law enforcement.

The average law enforcement officer today is already saddled with greater responsibilities than he can fully comprehend and capably discharge. Society demands of the officer total compliance with the mandates of the law; however, it has yet to give a clear-cut picture of what the law demands and what it forbids. Even those learned in the law cannot agree with certainty what powers the police officer possesses. Many times, his actions are adjudged wrong by the thinnest of margins in split decisions by the highest courts. He should not be subjected to public ridicule and penalized in salary, promotion, and personal career based on decisions reached by outside overseers to whom professional law enforcement and public protection may be of secondary interest.

Experience has shown that high selection standards, outstanding training, realistic pay scales, and advancement based on merit are fundamental principle of good police service. It is a pity that the efforts being wasted in promoting impractical review boards could not be applied to these proven elements.

## JOB CORPS CAMP ON CEDAR FLATS

Grangeville — Gerhart H. Nelson, Ashland, Mont., district forest ranger of the Custer National Forest has been named director of the Cedar Flat Job Corps Center in the Nezperce National Forest, John R. Milodragovich, forest supervisor, announced this week.

Site of the center is on the Selway river, near the Fenn Ranger station, about six miles from Lowell, and the Lewis & Clark Highway.

Construction is expected to start soon, and the tentative date for the opening of the center, to receive the first 100 trainees, is about July 1.

Let Blewett's make that frozen elk and deer meat into salami. It's delicious. Blewett's at Kendrick. adv

## APPRECIATION DAY

*Merchant*

*Dehorning Made Easy!*

## DEHORNING SUPPLIES

Complete Line of Dehorners

The right tools can take a lot of unpleasantness out of this necessary chore.

**Franklin Dehorning Paste Tube Dehorners**

**ELECTRIC DEHORNERS**

**BARNES CALF DEHORNER**

**FRANKLIN DEHORNING SAW**

**SUPERIOR DEHORNER**

**Blood Stopper - Protec**



Complete Line Of Livestock And Ranch Supplies

## RED CROSS PHARMACY

Phone 289-5941 Kendrick

**RHEUMATIC FEVER IS PREVENTABLE**

Boise — Rheumatic fever, like a boomerang, can come back again and again. If it does, it may damage the heart.

"Fortunately for Idaho's children research has already shown how to prevent this disease, which usually strikes between the ages of 5 and 15," says Dr. Lloyd L. Barrott of St. Anthony, President of the Idaho Heart Association.

The cause of rheumatic fever was entirely unknown prior to 1930. Research since that time has discovered that rheumatic fever, the cause of rheumatic heart disease, can now be prevented in most cases. Recurrence can be averted through a program of continuous regular treatment with antibiotics or other drugs, under medical supervision.

The Idaho Heart Association, together with the Idaho Department of Health, inaugurated a rheumatic fever control program in Idaho in 1955.

Each year the Idaho Heart Association puts thousands of Idaho Heart Fund dollars to work in Idaho on this rheumatic fever control program. Today there are nearly 1,400 on this program — both children and adults. Last year alone there were

223 new cases added to the register, and 179 dropped, due to changes in residence, diagnosis and treatment.

**AWARD FOR NEW SWEET ONION**

U. of I., Moscow, The University of Idaho Agricultural experiment station has received an award from Canner/Packer magazine for "Outstanding contribution to the progress of creative food processing in 1964," Dean of the College of Agriculture James E. Kraus announced today.

The award cites the University for developing the "El Capitan" hybrid Yellow Sweet Spanish onion. El Capitan, the first hybrid ever developed from the Yellow Sweet Spanish variety, is a product of work done by DeLance F. Franklin, superintendent of the University's Parma branch experiment station, in cooperation with USDA.

The hybrid's seed parents were released to seedmen for increase in 1963. While a small acreage of the variety was grown commercially last year, the University expects more seed will be available for commercial production this year.

"El Capitan was specifically developed for Idaho and eastern Oregon," says Franklin. "It's a good onion for the fresh onion business." As is typ-

ical with hybrids, El Capitan excels its parent stock in yield, bulb quality and storage quality. Only 31 winners, selected from hundreds of new or improved items used by food processors, received the 1964 canner/packer award.

**THIS AND THAT**

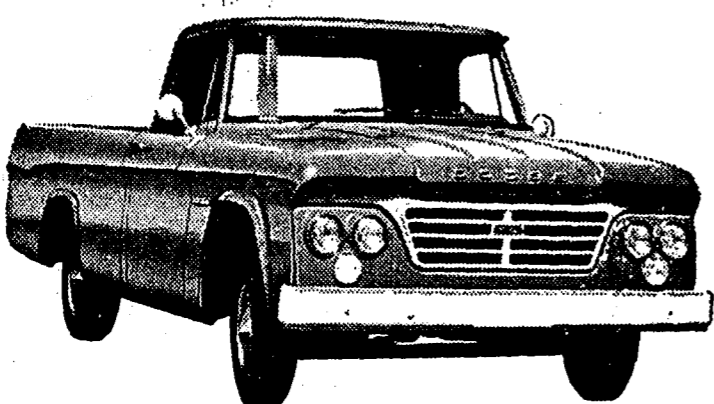
Those who depend upon others may

be disappointed. Indecision is costly, but hasty action sometimes costs more. It is a mistake to believe that you can acquire religion through the use of a checkbook. People often seek excuses for their failures — instead of trying to do something to correct them. It is up to the fault-finder to propose a remedy for the ills he has discovered.

**ROSIE'S LAUNDRY CENTER**  
KENDRICK, IDAHO  
**WASH 'N' DRY DRY CLEANERS**  
**OPEN: MONDAY THRU SUNDAY**  
**HOURS: 9 A. M. TO 8 P. M.**

**WILLIAMS, INC.**  
**SPRAYERS FOR RENT**  
**I P C**  
AVADIX . . .  
URAN . . .  
CARBYNE . . .  
SINOX PE . . .  
**AND 2-4 D**  
**ALL TYPES DRY FERTILIZERS**  
**DELIVERED IN TRUCK LOTS**  
(Also Available in any Small Quantity)  
**AVAILABLE NOW — Your Anahydrous Applicator**  
**WILLIAMS, INC.**  
MOSCOW  
Phone TU 2-1148 Night TU 3-8481

**DIRECT FACTORY TO YOU!**  
**10 DAYS ONLY**



**1965**  
**D-100 DODGE 1/2 TON PICKUP**  
Wide Choice of Colors . . . Heater,  
Other Extras  
**\$1899**

**\$99 DOWN INCLUDING INTEREST**  
**\$59.22 PER MONTH**

BUY NOW BEFORE THE SALES TAX IS EFFECTIVE!  
FARM FINANCING AVAILABLE

Open Till 9:00 to Serve Our Out-of-Town Friends!  
Just Call SH 3-5554

Local Bank Financing  
100% Financing On Approved Credit. Special Consideration to Farmers



**APPRECIATION DAY**

**Rubbermaid**  
**PRICES REDUCED**  
**BUY NOW AND SAVE**

Stop in Today! Never before have we been able to offer brand-name Rubbermaid Housewares at such drastically reduced prices. The items shown here are only a few of the many buys available . . . stop in today and ask for Rubbermaid.

ITEM	WAS	SALE PRICE
WASTEBASKET	\$2.98	\$2.79
SILVERWARE DRAIN	\$1.29	.98
BUSY BUCKET	\$2.98	\$2.49
STORAGE BIN	\$2.69	\$2.49
WASTEBASKET	\$4.98	\$3.98
DRAINER DIVIDER	\$2.00	\$1.98

**Abrams Hardware**  
PHONE 4051 Frank Abrams KENDRICK

**ADAMS'**  
**HUGE WAREHOUSE SALE OF NEW CARS**  
**ALL UNDER ONE BIG ROOF!**  
**30 NEW FORDS TO CHOOSE FROM**  
**ALL MODELS AND STYLES**  
**SPECIAL PRICES FOR THIS SALE**  
**COME AND SEE THEM!**  
**FRIDAY AND SATURDAY**  
**APRIL 2ND AND 3RD**  
**ADAMS' FORD WAREHOUSE**  
2004 4TH AVE. N. NORTH LEWISTON  
Former "MOORE FURNITURE" Location

**... and I promise we'll have ELECTRIC HEAT all through the house.**

**Install ELECTRIC HEAT for the most warming experience of your life.**

There's nothing more satisfying than the comfort-security of modern carefree ELECTRIC HEAT.

It's trouble-free because there are no moving parts—economical because housecleaning costs are cut to a minimum. It's comfortable because of room-by-room temperature control. You save because there's no wasted heat—you always have just the right heat wherever you need it.

See an Electrical League Contractor and get information and free estimate on ELECTRIC HEAT for your home or building — or call . . .

**THE WASHINGTON WATER POWER CO.**  
**INLAND EMPIRE ELECTRICAL LEAGUE**

W.W.P. & CO. BETTER SERVICE 75 YEARS

THE KENDRICK GAZETTE

Published every Wednesday after noon (dated Thursday) at Kendrick, Idaho, by W. L. McCreary.

Subscription \$3.00 per year. Strictly Independent in Politics. Entered at the postoffice at Kendrick, Latah County, Idaho, as second class mail matter.

Classified Advertising 15c per line. Figure 5 average words to line. Minimum, 30c.

Wednesday's Markets. Federation, bulk \$1.24 1/2; Red, bulk \$1.24 1/2; Club, bulk \$1.24 1/2; Forty Fold, bulk \$1.24 1/2; Barley, 100, bulk \$1.98; Oats, 100, bulk \$2.05; Lentils, 100, bulk \$3.50; Austrian Peas, 100, bulk \$2.35.

Beans. Small White, 100 \$8.00; Flat Whites, 100 \$8.00; Great Northern, 100 (No Quote); Reds, 100 (No Quote).

Clover Seed. White Dutch, per 100 (No Quote); Alayke, per 100 (No Quote); Red, per 100 (No Quote).

Egg Prices - Dozen. Ranch Run \$35c; Retail, lb \$78c.

Leland Church. Rev. Dan Smith, Minister. Church services every Sunday morning at 9:00 o'clock.

PAPER TABLE CLOTH - In 100-yard rolls, 40-in. wide. Does not dissolve when wet.

Kendrick has no parking meters!

FLIGERS' SAND & GRAVEL. Washed Sand & Gravel. Phone 288-2711. Juliaetta, . . . Idaho

FRANK V. BARTON. LAWYER. Office in Postoffice Building. Phone 4981. KENDRICK, IDAHO. Wednesdays: 9 a. m. to 5 p. m.

COMPLETE TONSORIAL SERVICE. Our Aim Is To Please. DICK'S BARBER SHOP. DICK CUDDY KENDRICK

EXPERT TV SERVICE. Is as Near as Your Phone. Experienced Serviceman. Full Line of Repair Parts. TUBES AND PICTURE TUBES. Phone 5982. BROCKE & SONS. Kendrick, Idaho

ROY GLENN. LICENSED AUCTIONEER. "A Square Deal To Buyer and Seller". Kendrick, Idaho. Phone 289-4304

Dr. D. A. Christensen. M. D. Office Hours 10:00 A. M. To 5:00 P. M. Emergency Call at All Hours On Notification. Office Phone 5932 Residence 5871. Office in Christensen Building, Kendrick

Ship By Truck. Door-to-Door Delivery. Fast, Safe, Dependable. Walter Brocke. Phone 5982 Residence 5983

CHURCH NOTICES

Juliaetta Methodist Church. David Zaske, Pastor. Church Services at 9:30 a. m. Church School at 10:30 a. m.

Kendrick Community Church. David Zaske, Pastor. Church School at 9:45 a. m. Church Service at 11:00 a. m. Lenten Services at 7:30 p. m.

Assembly of God, Kendrick. James M. Pearson, Pastor. 9:45 a. m. Sunday School. 11:00 a. m. Worship Service. 6:30 p. m. C. A. Service. 7:45 p. m. Evangelistic Service. 7:45 p. m. Wed., Bible Study and Prayer.

Seventh Day Adventist Church. Juliaetta, Idaho. Elder A. R. Hall, Pastor. 2:00 p. m. Sabbath School. 3:00 p. m. P. Worship Service. 7:30 Tuesday evening. Bible Study. 9 to 12 noon Dorcas Society on 2nd and 4th Tuesdays.

Juliaetta Church of the Nazarene. W. Perry Winkle, Pastor. 9:45 a. m. Sunday School. 11:00 a. m. Morning Worship. 6:00 p. m. Junior Society. 6:15 p. m. N. Y. P. S. 7:00 p. m. Worship Service. 7:30 p. m., Wed., Mid-week Service.

U. PRESIDENT TO SPEAK HERE MON.

A special preaching mission will be conducted by Dr. R. Franklin Thompson, President of the University of Puget Sound this Sunday, Monday and Tuesday. On Sunday Dr. Thompson will be speaking at Orofino for a Youth Rally at 5:00 p. m., and preaching at 7:30 p. m.

SAVE TIME CLASSIFIED. Stop the time. The classified.

HAY FOR SALE - Gerald Schmidt, Kendrick. 13-1. PROFESSIONAL TREE TRIMMING 14 yrs. experience. For further information call Insured Lawn and Tree Service, SH 3-9383, Lewiston. 12-3x

HAY FOR SALE - \$20 per ton. Henry Reil, Kendrick. 12-2. HOUSEWIVES, MOTHERS - Earn \$2.00 per hour and still manage your home. Part or full time. No canvassing. Write or phone Dorothy Torgerson, E. 411 11th St., Clarkston, Wash. Phone PL 8-6868. 11-4x

ANYONE NEED HELP? - Willing Workers 4-H Club will work for 50c an hour to earn money to go to 4-H Club Congress. Call Carole Farrington 289-5501; Margie Smith 289-4111; Leslie Gold 289-4135. -1

FOR SALE - Power mower, reel-type. Cheap. H. F. Hoffman. 13-1. BABY SITTING - Day or night. Phone 289-5847. Dorothy Pippin. 10-4

FOR LOWEST PRICES read the ad. of Blewett's Cash Grocery on the back page. 7-2

WANTED - CHURNING CREAM. Lewiston price at Kendrick. Leave at Kendrick Table Supply, Kendrick. Golden Grain Dairy, Lewiston. -tf

HAY FOR SALE - Baled. Arlie Armitage, Southwick. Phone 289-4676. 8-4x

FOR SALE - 1961 Scout, new universal, clutch and paint. Short cap Warm Hubs. See Marvin Trout. Phone 289-4460. 3-3x

HAY FOR SALE - \$21 per ton. Willard Schoeffler. Phone 289-5644. 12-3x

SEE THE NEW LINES of RCA. Black & White and Color TV Sets. Now on display at the Variety & Gift Store, Kendrick. 5-1f

FOR SALE - Large Duncan Hyfe extension table, closed 60 in. long by 40 in. wide, extends to 93 in. when open. Price \$200.00. Mrs. Walter Danner, phone 288-3742, Juliaetta. 13-3x

BENDEL'S MEAT PACKING PLANT. Custom Slaughtering. Meat Cut, Wrapped and Quick Frozen. Locker Beef by Half and Quarter. (Animals Should Be In Not Later Than Monday). Live Pick up Can Be Arranged 4 Miles East of Troy on Troy-Deary Highway. Ph. TE 5-2341. Eve. TU 2-8082

ORDINANCE NO. 525

AN ORDINANCE Granting to THE WASHINGTON WATER POWER COMPANY, a corporation organized under the laws of the State of Washington, and its successors and assigns, a franchise to construct, erect, maintain, operate, remove and use wires, poles and facilities for transmitting and distributing electricity for heat, light and power to the Village of Kendrick and its inhabitants, and to erect, construct, maintain, operate, remove and use wires and facilities for telephone purposes in its private business, and to construct, install, maintain and remove conduits on, over, along, under and across the streets, alleys, and ways within the corporate limits of the Village of Kendrick as they now exist or as they may hereafter be changed, and granting to use of the streets, alleys and ways thereof within the corporate limits of the Village of Kendrick.

BE IT ORDAINED by the Council of the Village of Kendrick 1. That THE WASHINGTON WATER POWER COMPANY, a corporation organized under the laws of the State of Washington, its successors and assigns, hereinafter called the "Grantee", be and it is hereby granted, for the term of twenty-five (25) years from and after the passage of this Ordinance, the right, privilege, and franchise to construct, erect, maintain, operate, remove and use wires, poles, plant and all necessary or desirable appurtenances thereto for transmitting and distributing electricity for electric light, heat, and power, and also to use its wires, poles, and properties for telephone purposes in its private business; and to install, construct, maintain, and remove conduits over, on, along, under and across the streets, alleys, and ways within the incorporated limits as they now exist, or as they may hereafter be changed, of the Village of Kendrick.

2. There is further given in connection herewith, unto the Grantee, its successors and assigns, the right during the life of this franchise, to cut and trim any and all trees growing in, on or over the streets or alleys of the Village of Kendrick that might or may interfere with any wires, poles, conduits or other apparatus of the Grantee, its successors and assigns.

3. The poles, wires, and other apparatus mentioned herein shall be constructed, erected, and maintained in accordance with the laws of the Village of Kendrick relating to electrical construction, and any rules or regulations adopted by any agency of the State of Idaho having jurisdiction over electrical construction in the Village of Kendrick and also said construction shall be in such manner as to prevent and guard against accidents or damages as nearly as possible to any persons who may be properly using said streets and alleys.

4. The said Grantee herein shall have and is hereby given the right and privilege to make any and all necessary or proper excavations and obstructions in any of the streets, alleys, and properties of the Town for the purpose of building, erecting, repairing, removing, maintaining or changing any of the poles, wires, conduits, crossarms, or other appliances or apparatus used or to be used in connection with the above purposes. Whenever the Grantee, its successors or assigns, shall excavate in or obstruct any of the streets, alleys or ways of the Village of Kendrick for the purposes aforesaid, it shall return the same to the order and condition that they were in before they were excavated or obstructed, as soon as practical and within a reasonable time after such excavation or obstruction, and that the Grantee herein, its successors or assigns, shall at all times hold the Town free and clear from any and all damages that may result to any person, persons, firm or firms, corporation or corporations, or to any property of the same, by reason of any erection, construction, maintenance or operation of any of the things herein authorized to be constructed and maintained by it.

5. The Town reserves the right to remove any such wires, poles, or apparatus herein provided for in case of general conflagration and necessity therefor. The Town in such case shall not be held liable for any damages to the Grantee, its successors or assigns, on account of any cutting away or removal of any poles, wires, or other appliances under the last named circumstances.

6. The Grantee, on request of the Council of the Town shall remove or raise its wires so as to permit the removal of any house or building when the same may be necessary to permit the removal of said building on, over, and along the streets, alleys, or public highways of the said Town to the point of destination, provided that the party to whom a permit has been granted to remove any such building on, over and along any of the streets or alleys of the Town shall pay to the Grantee hereunder the cost incurred in removing or changing its wires and facilities so as to permit the removal of said building as aforesaid.

CAUSES OF BROWN PATCHES IN LAWNS

Brown patch in lawns may be caused by too much nitrogen. Therefore, it is discreet to apply fertilizer moderately and distribute it evenly. That's a tip from Homer Futter, Latah County Agent. Suggestions about control of brown patch and other lawn diseases are given in a new publication of the department of Agriculture. The name of it is "Lawn Diseases." You can get a free copy at the county agent's office.

The fungus that causes brown patch attacks nearly all kinds of grass. It is commonly the bentgrass and Kentucky blue. It usually occurs during wet, warm weather after excessive applications of nitrogen. This promotes lush growth that is readily attacked by the fungus. The disease spreads by fungus threads that may be carried on shoes, grass clippings, or the lawn mower.

The first step to prevention is to go easy on the nitrogen. Enough is fine. More is apt to be bad. Another helpful practice is to water early in the day to give grass time to dry out before night. This is not practical in some areas where evening moisture is necessary because of the heat during the day, but if brown patch has become a problem a change in the watering schedule is indicated.

8. The Grantee shall have the right to make and enforce reasonable rules and regulations pertaining to the conduct of the Grantee's business and to prescribe the forms for application for service and contracts to be executed by applicants. Service shall be supplied to the Town and its inhabitants in accordance with the Grantee's rules and regulations filed or hereafter filed with the regulatory body of the State of Idaho having jurisdiction over the Grantee.

9. The Grantee may be directed to install its wires underground upon request of the Town and those property owners to be specially benefited thereby after a public hearing and finding by the Town Council that the area wherein underground facilities are requested is feasible and practical, and for underground installation and installation is required in the public safety, interest, or convenience. In the event underground electric facilities are to be installed the difference between the cost of constructing and installing the wires and related facilities above ground, and the cost of constructing and installing the wires and related facilities underground, shall be borne proportionately by each property owner in the area, public or private, specially benefited thereby.

10. The rates and charges applicable for electric service furnished by the Grantee, its successors and assigns shall be as filed with the regulatory body of the State of Idaho having jurisdiction and in effect during the term of this franchise.

11. It is understood that this franchise is not an exclusive franchise, and the said Village of Kendrick reserves unto itself the right to grant other franchises for the purpose for which this one is granted.

12. This franchise and all of its provisions shall be void, inoperative and of no force or effect whatsoever, unless the said Grantee named herein shall, within thirty (30) days after the passage and publication thereof, file with the Clerk of the Village of Kendrick its acceptance thereof in writing.

13. The franchise hereby granted may be revoked by the Town by a duly enacted Ordinance in the event, the Grantee shall fail after thirty (30) days written notice to comply with any of the terms, conditions, or obligations imposed upon the Grantee hereunder. Introduced and read the first time the 19th day of March, 1965. Read the second time the 19th day of March, 1965. Read the third time the 19th day of March, 1965. Passed the 19th day of March, 1965. L. A. WALLACE Mayor



VERY, VERY PROPER! At a wedding reception the young man remarked: "Wasn't it annoying the way that baby cried during the ceremony?"

PREPARING FOR SKY SURVEY OF GAME. Pre-flight briefing for reconnaissance flight over North Fork of Clearwater river from Lewiston maps area for big game counting. These flights are made in many parts of the state at about the same time every year to check game concentrations for comparative purposes.

There is no substitute for good food, and you will find every kind to tickle your palate at Blewett's Grocery in Kendrick. Kendrick has no parking meters!

Appreciation Day. REXALL. 1¢ SALE. STARTS THURSDAY, APRIL 1ST. RED CROSS PHARMACY. Your Rexall Store. PHONE 289-5941. KENDRICK. Frozen Foods of All Kinds - Blewett's Grocery

Appreciation Day. FASTER, EASIER WINTER STARTING. Heavy-duty engines start in seconds with Chevron Pressure Primer System - even in sub-zero weather. WE DELIVER PHONE 289-5711. KENDRICK GARAGE INC.

**76 UNION 76**  
 For the Best in Quality  
 Petroleum Products  
 Call 289-4251  
 Royal 76 or Regular Gasoline

**ATTENTION HOMEOWNERS!**  
 For that warm, comfortable home -  
 give us a call on Union Blonde Heat-  
 ing Fuels. You'll really like it!

**BILL ROGERS DISTRIBUTOR**

**CAMERON SECTION  
 ACTIVITIES VARIED**  
 MRS. HARL WHITINGER  
 Phone 285-4650

Ted Meyer Hospital Patient  
 Ted Meyer, who is a hospital patient at the St. Mary's Hospital in Rochester, Minn., will undergo surgery Wednesday. His mother, Mrs. Thelma Meyer, is with him. Mrs. Meyer has also been ill, and she was in the hospital also. Word arrived Sunday evening that she is now better. Miss Loeda Meyer left for Rochester Sunday night by plane to be with her mother and brother.

**GOLDEN RULE**  
 BY ALMA BETTS

The majority of the Teakeam Evergreen Grange members greatly enjoyed a crab feed Saturday evening, with the entertainment committee as hosts. Mr. and Mrs. Geo. Jones of Orofino were guests, after which the Joneses furnished entertainment before the regular meeting. Saturday, April 3rd, there will be a public card party at the Grange Hall. Everyone is invited.

**SOCIETE EASTER CANDY**  
 FIVE DIFFERENT KINDS IN BULK  
 to Choose From. Lay in a Supply  
 Now for Easter. Easter Baskets, too!

**CLOSED THIS SUNDAY & MONDAY**  
**HUNGRY FOR A STEAK? ONE THAT'S  
 "LICKIN'" GOOD?**

Then come on in and eat with us! And bring the family, too. Everyone will enjoy the good food, served in a friendly atmosphere and with a smile!

**GOOD FOOD — SMILING SERVICE**  
**BURT'S CONFECTIONERY**  
 BURT AND VERA SOUDERS

**Other News**  
 Mrs. Myrtle Schoeffler of Kamiah drove over Wednesday to spend the day with her brother-in-law and sister, Mr. and Mrs. Harl Whiting. Jillian Wegner and Paul Houston, students at the College of Idaho in Caldwell, spent from Wednesday to Sunday here with her parents, Mr. and Mrs. Glen Wegner, and other relatives.

The Southwick Homemakers Club will meet with Mrs. D. V. Kuykendall next Thursday, April 8th, with "Turkish" food. Roll call will be answered with some fact on Turkey. Mrs. B. A. Kite and Alma Betts called on Mrs. Clay King Tuesday. On Wednesday the Kites left for their home in California, after visiting a few weeks here with relatives and friends.

**PRE-EASTER SALE**  
**BETTY CROCKER CAKE MIXES**  
 Select from White, Yellow, Devils Food, Lemon Velvet, Chocolate Malt and Honey Spice  
**3 Pkgs. \$1.00**

**Appreciation Day**

**WOMEN'S DRESSES AND SUITS —**  
 Look your best for Easter. Come in and see this big, new shipment.

**SEER-SUCKER SUITS FOR LITTLE BOYS**  
 Sizes: Small, Medium, Large and Extra Large. Dressy and practical!

**COTTON KNIT TOPS AND PANTS**  
 For the young boy. You've been asking for these — now we have them!

**JAC SHIRTS —**  
 A huge new shipment in sizes 2 years through men's large. Snappy, practical!

**MEN'S TIES — Originals by Daryl**  
 New! Really different, really dressy! Pick out a new one for Easter!

**TRY US FIRST AND SAVE**  
**THURBER & OLDERNESS**  
 Phone 289-5791 Kendrick

Mr. and Mrs. Otto Sillow of Julietta were last Wednesday evening supper guests of Mr. and Mrs. James Whiting. Mr. and Mrs. James Whiting, Janis and Gina were Saturday evening supper guests of his parents, Mr. and Mrs. Harl Whiting. Mr. and Mrs. Stanley Hepler spent Saturday and Sunday in Lewiston attending the trap shoot.

Mrs. Albert Lawrence and children visited with Mrs. Albert Lawrence on Wednesday. Sunday, the Albert Lawrence family drove to Dodge, and later called on his parents, Mr. and Mrs. Oscar Lawrence, in Lewiston. Mr. and Mrs. D. V. Kuykendall were Lewiston visitors on Thursday. Alma Betts visited Mrs. John Woods, and showed the Teakeam-Cavendish school pictures on Hawaii, last Thursday.

**S & W FINE COFFEE**  
 A Good Buy @ Lb. 83¢  
**Paas Easter Egg Dye, pkg. 10¢**  
**Rit Easter Egg Color and Space Kit, pkg. 29¢**

**NEW ARRIVALS IN OUR DRY  
 GOODS DEPARTMENT**  
**KNITTING YARNS**  
 New Shipment — Many Shades To Select From

**PILLOW CASES, STAMPED AND HEMSTITCHED**  
 New Patterns, Pair \$1.59  
**FLOUR SACK TOWELS**  
 Large Size, Each 43¢

**N. B. LONG & SONS**  
 PHONE 5951 SINCE 1908  
 N. B. LONG & SONS N. B. LONG & SONS

**SHORT'S FUNERAL CHAPEL**  
 MOSCOW, IDAHO PHONE TU 2-1166

Mr. and Mrs. Henry Wendt visited Sunday afternoon with Mr. and Mrs. Otto Kruger. Mr. and Mrs. James Whiting, Janis and Gina, and Mr. and Mrs. Harl Whiting were Lewiston and Clarkston visitors Sunday afternoon. They called on Mrs. Fred Whiting, who is a patient at the Rest Haven Nursing Home; on Mrs. Ray Whiting and granddaughter, and on Mr. and Mrs. Everett Lohman. Eva Wilken spent Sunday with Jo-ene Brammer. In the afternoon Mr. and Mrs. Ernest Brammer and the girls were Orofino visitors.

**FIELD CROPS ARE POPULAR IN 4-H**  
 Chicago — A 4-H Field Crop project keep today's young farmers on their toes because they need to know about the latest scientific and technological developments in agriculture and how to put them to use. That is the consensus of club members across the nation who earned top state and national honors in the project last year.

**FIGHT ON TO SAVE PUBLIC LANDS**  
 Wash., D. C. — A program to save 180 million acres of eroding western public land — nearly 100,000 acres of which is in Idaho, has the endorsement of Sen. Frank Church of Idaho.

It is because of the conditions, not beauty is gone — their only downstream contribution is silt, mud and debris. We have more lands that can easily deteriorate into this same condition.

It is because of the conditions, not beauty is gone — their only downstream contribution is silt, mud and debris. We have more lands that can easily deteriorate into this same condition.

**RIDGE RIDERS**  
 The Ridge Riders Saddle Club will hold its regular meeting Thursday, April 1st, at 7:30 p. m., at the Kendrick Fire Hall.



**SHURFINE CANNED FOODS —**

CORN	} 6 FOR \$1
PEAS	
PEAS & CARROTS	
GREEN BEANS	} 5 FOR \$1
FRUIT COCKTAIL	
MEDIUM PITTED SF OLIVES	} 4 FOR \$1
GRAPEFRUIT SECT'NS	

**TASTEWELL CANNED FOODS —**

GREEN BEANS	} MIX OR MATCH
SLICED BEETS	
W.K. CORN	
PEAS	
APPLE SAUCE	} 7 FOR \$1
Shurgold Margarine, lb.	

**TASTEWELL CANNED FOODS —**

LIMA BEANS	} MIX OR MATCH
KIDNEY BEANS	
CHILI	
PORK & BEANS	} 8 FOR \$1
TASTEWELL INSTANT POWDERED MILK, 14-oz. Size	
TASTEWELL MILK, 8 Tall Cans	\$1

**OTHER SPECIALS —**

Energy Bleach, Gal.	42¢
Soflin Toilet Tissue, 12-roll Pack	\$1.00
Soflin Facial Tissue, 6 pkgs.	\$1.00
Tastewell Shortening, 3-lb. can	63¢
Tastewell Peanut Butter, 3-lb. jar	\$1.05
Tastewell Salad Dressing, qt.	35¢
Tastewell Preserves, 40-oz. jars	69¢
Tastewell Margarine, 3 lbs.	87¢

**BLEWETT'S**  
**CASH GROCERY**  
 PHONE 4921 KENDRICK PHONE 4921

**Appreciation Day**

SUGAR — 25 lbs.	\$2.79
10 lbs.	\$1.09
SNO-BOY FROZEN ORANGE JUICE 12-oz. tins — 2 for	98¢
VELVEETA CHEESE — 2-lbs.	89¢
ONION SETS — lb.	39¢
SEED SPUDS — Netted Gem or Red Pontiac — 10 lbs.	98¢

**Kendrick Table Supply**  
 "Your Friendly Store"  
 JIM TRAVIS PHONE 5741

N. B. LONG & SONS N. B. LONG & SONS N. B. LONG & SONS N. B. LONG & SONS