

COME IN AND JOIN US
 For "Just a coffee and pie" — or a whole meal. We can now serve you French Fries with your order —
ALSO — Pop, ice cream and beer. Our pleasure is serving you!
GEORGIA & RAY'S CAFE
 Phone 8-2761 *Julietta*



You can get your ELEPHANT BRAND FERTILIZER when you NEED it

Your Elephant Brand dealer maintains an ample stock of Elephant Brand fertilizers — because nearby warehouses provide him with a fresh supply whenever needed. This delivery and supply system assures you of getting the Elephant Brand fertilizer you want when you require it.

ELEPHANT BRAND gives you LPC*

*Lower Production Cost per unit
 With Elephant Brand you get bigger crops. This means each bushel, ton or crate costs you less to grow — you get Lower Production Cost per unit — LPC — and MORE PROFIT per acre.

It pays to choose from the Elephant Brand line

| | | | | | |
|--------------------------------|---------|-------------------|----------|------------------------|---------|
| 11-48-0 | 13-39-0 | 16-48-0 | 16-20-0 | 23-23-0 | 24-20-0 |
| 27-14-0 | 8-32-16 | 10-30-10 | 13-13-13 | 14-14-7 | |
| NITRAPRILLS (Ammonium Nitrate) | | AMMONIUM SULPHATE | | TRIPLE SUPER PHOSPHATE | |

Elephant Brand
 water soluble FERTILIZERS

GET MORE FROM YOUR LAND WITH ELEPHANT BRAND
 Exclusive U.S. Sales Agent for Elephant Brand Fertilizers: Balfour, Guthrie & Co., Limited
 San Francisco • Los Angeles • Seattle • Portland • Spokane • Minneapolis

MANPOWER TO BE DISCUSSION TOPIC

U. of I., Moscow — A profile of the manpower situation facing the United States during the 1960's will be the gist for a meeting of guidance personnel, educators and others connected with education at the University of Idaho, Monday, April 25. Entitled, "Manpower, Challenge of the 1960's," the material has been gathered by the bureau of apprenticeship and training of the Department of Labor. Information from the survey has been organized into color-coded charts to show what may be expected in the next decade.

Topics stressed include the number of persons who will reach 18 years of age annually, the numbers of young people who will drop out of school, population growth, industry changes and developments in relation to the labor force, and the utilization, development and training of people.

LATAH COUNTY HONORED

Moscow — Latah county has received a certificate for having Modified Brucellosis free cattle. Dr. William Thomas, federal veterinarian, delivered the certificate to the Latah county commissioners, and congratulated Latah county on being one of the first counties in the state to acquire Brucellosis control in livestock by testing.

This testing program has been under way for over 20 years, and, periodically, the cattle are spot-checked to determine the incidence of Brucellosis. This last testing series was completed in November of 1959.

The information is extremely valuable to those in the educational field," said Dr. Thomas Dahle, director of the division of adult education and summer school. "Any persons interested are invited to attend."

P.-T. A. Stunt Night

K. H. S. GYM.
FRIDAY, APRIL 1
 8:00 P. M.

The Program Includes Two One-Act Plays

"RELUCTANT BRIDEGROOM"

— and —

"LIGHTHOUSE KEEPERS DAUGHTER"

MUSICAL NUMBERS
 COMEDY ACTS
 SQUARE DANCE EXHIBITION

Adults 50c Grades 25c Pre-School Free

HOW LONG SINCE YOU TOOK THE FAMILY OUT TO DINNER?

Mom and the kids would really enjoy being your guests for a change

Try Our Good Food and Smiling Service

BURT'S CONFECTIONERY
 BURT AND VERA SOUDERS

Attention FARMERS!

- 151 I.H.C. 1959 4-WAY LEVELER — Fully equipped, including pea bar and reel \$11,750
- 151 I.H.C. 1959 4-WAY LEVELER — Fully equipped — Never been in Peas \$11,600
- MASSEY HARRIS 90 — Power steering — automatic leveler — Chopper — Pea equipment \$6,750
- 2-12ft. Easy Flo fertilizer spreaders
- 1-12ft. John Deere fertilizer spreader

Everett Will Tractor Co

Phone TU 2-1178 Moscow, Ida.

Increase Profits

BY FEEDING

O. K. BRAND HIGH QUALITY FEEDS
 POULTRY -

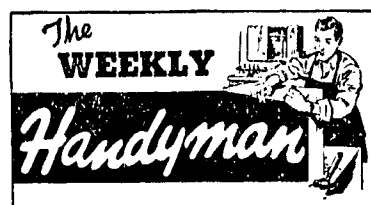
CATTLE

AND HOGS

MINERALS — SALT — GROUND FEEDS
 CUSTOM GRINDING

Lewiston Grain Growers

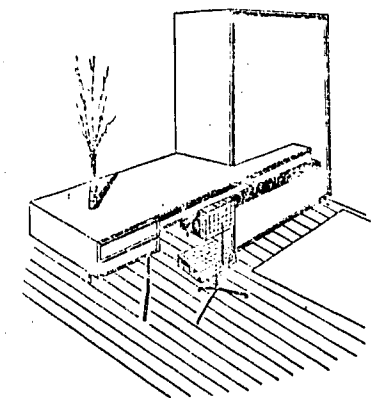
Phone 5691 KENDRICK Phone 5691



A Service of The Thor Research Center For Better Farm Living

A reader has requested ideas for a room divider to brighten an unimaginative living room. One plan we have combined a handsome utility desk and room wardrobe. It can change the whole personality of a dull room and be a practical addition at the same time.

Although the thought of building this two-in-one project sounds challenging, its construction is relatively simple and can be done quickly with the assistance of such portable electric tools as saw, sander, and jig saw or with a portable electric drill that has sawing and sanding attachments.



This room divider is practical and will change a room's personality.

The wardrobe and desk can be built to fit a prescribed area in your home. Suggested dimensions are combined length of wardrobe and desk, 8 feet 9 inches; height of wardrobe, including 4-inch legs, 6 feet 4 inches. This size provides room for a 10-inch storage shelf at the top.

Other wardrobe dimensions are 2 feet at the sides and 4 feet across the front. The two-drawer desk is designed to overlap the wardrobe 2 feet 6 inches at the rear and its overall length is 7 feet 5 inches.

The desk requires but two legs of its own, gaining support on one side by attaching it to the wardrobe. Sides of the desk can be made with 1x10s and the top with 2x4s. All boards that bear the same dimension can be trimmed to identical length by clamping them together and cutting simultaneously with a portable electric saw.

This minimizes much of the work, because side supports in the wardrobe will be fashioned from 1x4s of the same length and the closet shelf from identical length 2x6s. Finish material used is 3/4-inch tempered hardboard.

(To receive a plan for this room divider, free of charge, mail your request to Thor Research Center, Marengo, Ill.)

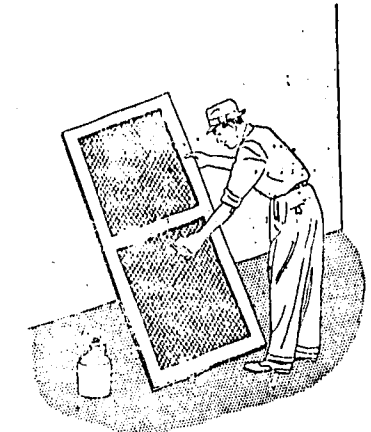


A Service of The Thor Research Center For Better Farm Living

QUESTION: I notice my screens are a little worse for wear this year. Is there an easy way to dress them up before I store them for the winter?

ANSWER: Screens can't help but acquire a weathered look after a few years. That is why it's a good idea to refinish them regularly.

It is best to remove rough spots on the screen frames before painting. This can be done easily with a portable electric sander.



Clean screens of rust and grime with linseed oil brushing.

After the refinishing is completed, the screen itself can be improved. To do this job, attach an old piece of carpeting or other absorbent material to a block of wood. Saturate the material with linseed oil and rub in one direction to remove rust and other unwanted grime. Too much oil will fill the holes, so be careful of the quantity used.

If you wish to paint the screening, use the same carpeted block method for applying paint.

QUESTION: I recently lined a wardrobe with red cedar. Is there a special way to preserve the moth-killing aroma by finishing the wood?

ANSWER: The best way to preserve the cedar odor is by keeping the wardrobe door tightly closed, and even this will not prolong the odor indefinitely. Cedar should never be finished because varnish and shellac seal the surface and prevent the wood from emitting the odor.

Eventually, the cedar odor will decrease, though it still will be noticeable two or three years after being installed. Best thing to do at that time is to go over all the cedar lightly with a portable electric sander. The wood again will emit the valuable cedar odor when a fresh surface is exposed.

(Address your do-it-yourself problems or questions to Thor Research Center, Marengo, Ill. They will be answered by mail or in this column.)

SAVE MONEY



Up to \$5,000

ON THREE BEDROOM HOMES

Better Built by Professional Carpenters of **HUGHES HOMES, Inc., Spokane, Wash.**

CONTACT YOUR AGENT

Howard A. Wolff

Phone 5653 Kendrick, or Write to Box 11 Route 1, Juliaetta, Idaho — For Personal Showing, Information and Appointment

Make your Home \$\$\$ go further with a "BETTER BUILT" New HUGHES HOME

Get Fresh Vegetables at Blewett's, Kendrick

McMonigle Bonus BUYS

START OUT SPRING WITH A BETTER USED CAR OR TRUCK

- 1957 BUICK HARDTOP COUPE — Dynaflo, Power steering, Power brakes, R & H, Fully equipped \$1645
- 1959 CHEVROLET BISQUANE — 2-door sedan, V-8, Over Drive, R & H. A real buy \$1995
- 1957 MERCURY MONTEREY — 2-door, V-8, A. T., R & H, Ready to go \$1475
- 1958 WILLYS 4-WHEEL DRIVE P. U. — New Paint and tires \$1495
- 1956 WILLYS 4-WHEEL DRIVE JEEP — Excellent metal cab \$1245
- 1950 CHEV. 2-TON TRUCK — 2-Speed axle — A worker \$595
- 1957 FORD RANCHERO — New V-8 engine short block, New Paint \$1545

MANY MORE TO CHOSE FROM — COME IN TODAY AND SAVE

McMonigle Chev. Co.

119 New Sixth St. Lewiston

HUGE INVESTMENT HAS BEEN MADE BY POWER CO.

Spokane — More than \$196 million has been invested by the Washington Water Power Co. in new plants, equipment and customer service facilities since 1950, the company's 70th annual report to shareholders reveals.

W. W. P. president Kinsey M. Robinson said the figure is equivalent to an expenditure of more than \$53,700 a day for the ten-year period.

In his annual letter to the utility's 22,500 shareholders, Robinson reported that the years 1950 to 1959 "may well be termed the decade of decision for W. W. P."

CLAY PRODUCTION BIG IDAHO BOON

U. of I., Moscow — Clay production and utilization is potentially one of the fastest growing phases of the mineral industry in Idaho, Dr. E. F. Cook, dean of the college of mines and director of the Idaho Bureau of Mines and Geology, said this week.

To help Idahoans learn more about clays, Prof. Joseph Newton, head of the department of mining and metallurgy at the University of Idaho, has prepared an information circular called, "Clay, Its Composition, Properties and Uses."

Idaho has abundant reserves of the natural raw material which has been used by man since prehistoric times, Dean Cook said.

Clay occurs in many different forms and has an amazing variety of uses. Many familiar objects and materials contain clay or require clay in their manufacture, he said.

In the booklet, Prof. Newton describes the structure and composition of clay minerals in relation to their physical properties and uses. He outlines methods of identifying various kinds of clay, tells of the different types of deposits, and discusses the commercial value of the different types of clay.

"In those ten year," he said, "the company attained independent status and has more than doubled the number of its shareholders. Two huge hydroelectric plants, Cabinet Gorge and Noxon Rapids were constructed, adding 600,000 kilowatts to company-owned generating facilities."

"Other highlights of the big decade," he said, "are the construction of a beautiful and highly efficient Service Center and general office building in Spokane, and the nationally spotlighted Stevens county election that was dramatic proof that the people of the Northwest do not prefer political control of the electric power industry."

Total operating revenues is 1959, with the addition of gas service supplied by the company amounted to \$36,291,181. "Our gross revenues are up approximately six million dollars over 1958," Robinson said. "The utility's operating expenses also increased. Federal, state and local tax payments totaled \$6,213,000."

The W. W. P. chief executive said the company's 1959 construction expenditures totalled \$23,322,000. The major share of this was allocated to the Noxon Rapids project in western Montana. The mile-long dam, its fourth and final generator going in to service in March, is the largest hydro-electric project in Montana.

The company reports that for the first time in the last decade it is now able to meet all of its firm power requirements with company-owned resources and long-term power purchase agreements. W. W. P., along with other investor-owned utilities in the area, has signed a long-term agreement to purchase virtually all of the power generated at Priest Rapids, Rocky Reach and Wanapum dams. These purchase agreements, signed prior to construction of the projects, made it possible for the Public Utility District owners to finance the power projects.

At year-end of 1959 the company was providing natural gas service in nine Inland Empire communities. They were serving 17,151 natural gas customers, an increase of approximately 8,000 since W. W. P. ac-

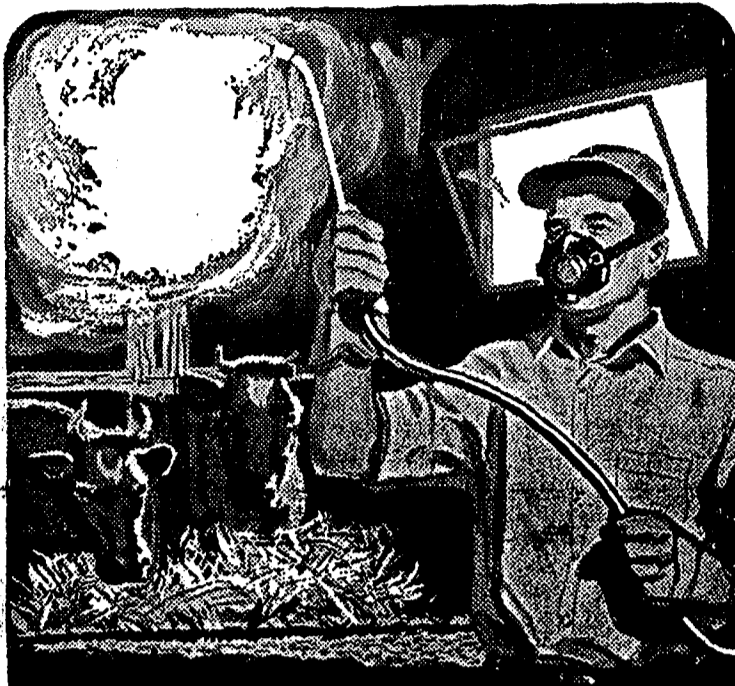
quired its first gas system in June of 1958. On the peak day of 1959, nearly 50 million cubic feet of gas was delivered through more than 1100 miles of mains and service lines on W. W. P.'s gas distribution system.

Use of electricity by the company's

147,000 electric customers has also climbed steadily in the past ten years. In 1950 the company's average customer used 5,139 kilowatts annually. As 1959 came to an end residential customers were using 8,740 kilowatt hours annually. The increase for 1959 alone was 526 kilowatt hours. A to-

tal of 1,318 electric heat installations were made during 1959 and W. W. P. now has some 12,000 all-electric homes on its lines.

Washington Water Power is a member of a four-utility organization, Pacific Northwest Power Co., which has applied to the Federal Dam Commission for a license to build the 690-foot high Mountain Sheep dam on the Snake river above the mouth of the Salmon. Other members of P. N. P. are Portland General Electric, Pacific Power & Light, and Montana Power Co. The Oregon Water Resources Board has given its approval of the proposed big dam.



10% SALE on germicides

When it comes to solving farm sanitation problems, nothing beats Standard Germicides and Disinfectants. S. O. Super-Germite Cresylic Solution, Chevron Dip and Disinfectant, and Chevron Poultry House Spray help you keep poultry and livestock healthy and in good condition.

Right now you can save money on these top-quality products. There's a 10% discount if you take delivery before April 30th.

For any Standard Oil product, call
E. A. DEOBALD
Kendrick, Idaho



SPRING SPECIAL Peat Moss Sale

HI-PRESS — 70-lb. Bag, Reg. \$5.95
SALE PRICE \$5.25

HI-PRESS — 70-lb. Bag, Reg. \$4.50
SALE PRICE \$4.00

HI-PRESS — 20-lb. Bag, Reg. \$2.25
SALE PRICE \$1.85

HI-PRESS — 5-lb. Bag, Reg. 98c
SALE PRICE 75c

REGULAR HORTICULTURAL PEAT MOSS

Large Bale, Reg. \$4.95
SALE PRICE \$4.50

Half Bale, Reg. \$3.75
SALE PRICE \$3.50

Satchel Bale, Reg. \$2.25
SALE PRICE \$2.00

Dormant Fruit Tree Spray Kits ... \$1.79

Geo. F. Brocke & Sons

Inc., SEEDSMEN
PHONE 4231 KENDRICK

AUCTION SALE

SOUTHWICK COMMUNITY HALL

SOUTHWICK, IDAHO

FRIDAY, APRIL 8, 1960

COMMENCING AT 10:00 A.M.

1 REFRIGERATOR

1 AUTOMATIC WASHER

1 CHAIN HOIST

1 ELECTRIC RANGE

1 CREAM SEPARATOR

1 KITCHEN SINK WITH FAUCETS

1 HAMMER MILL

1 JOHN DEERE HAY CHOPPER
MODEL 22

1 NEW 11 X 28 TRACTOR TIRE

MANY OTHER ITEMS TOO
NUMEROUS TO MENTION

BRING YOUR SURPLUS ITEMS

TERMS: CASH

LUNCH SERVED AT NOON

PAT HOLLIDAY, Auctioneer

FROM THE REXALL LABORATORIES
COMES THIS AMAZING STATEMENT:

Now you can actually
penetrate the hair shaft



... and protect
the natural life
and beauty
other products may
be stripping from it

NEW AWAKENING for your hair

by **Rexall**

HERE, AT LAST, are sound scientific formulas that can help REVEAL, REVIVE and DEVELOP the natural beauty of your hair, as well as constantly protect it from the damage which modern living is always inflicting on it... a new triumph of science from the Rexall Research Laboratories.

A. Controlled-Action SHAMPOO
At last! A shampoo that doesn't wash away the natural oils of your hair by over-cleaning. The scientific base for Rexall's exclusive formula is amphoteric — which means the ingredients are so balanced that they automatically meet the cleansing needs of your hair... protecting Nature's own precious nutrients. Leaves your hair with more of its natural strength, moisture balance, softness and sheen!

B. Sheen 'n' Shield RINSE
Contains Rexall's exclusive Propanolite, a secret formula containing protein, lanolin and Panthenol, a vitamin found in the hair shaft! Actually takes Propanolite right into the hair shaft! Protects the beautiful conditioning action of New Awakening Shampoo by leaving an invisible anti-static shield on each hair to help repel dust and dirt. As it makes even the stubbornest hair more controllable!

C. Moisture Guard CONDITIONER

Gives your hair and scalp a beneficial treatment of Rexall's exclusive Propanolite. Helps reinforce its natural elasticity, protects moisture balance by combating drying effects of sun, wind, dust. Used daily, it pays dividends in extra beauty!

D. Crystal Clear HAIR SPRAY

Different from ordinary sprays, this new Rexall formula contains Panthenol, vitamin, lanolin, other ingredients, but NO lacquer, NO dulling film. Invisible, yet holds your hair in the most delicate natural styles. Anti-static to repel the dust which many other sprays seem to attract.

E. Star Shine HAIR GLOSS

Fortified with lanolin and Panthenol, it makes your hair dance with high lights, gleam with a natural brilliance you never dreamed was there!



Announced in VOGUE
and
LADIES' HOME JOURNAL

1.75 each
plus tax

We invite you to come in and see this wondrous new concept in hair care.

NOW AVAILABLE AT OUR REXALL DRUG STORE

Red Cross Pharmacy

Your BISMA REX-ALL Store
Cecil Choate Phone 5941

KENDRICK

(By Lucille Magnuson)

How did the town begin?
My child asks with a grin;
For, he wants to know

Why this hometown did grow.
So opening a book
Of history, we'll look
To see just what it says.
It tells that Indian ways
Showed seekers this good land,
And they with neighbors planned

To settle as this hub
Of ridges, pines, and shrub.
Each hill had farms on top
With promise of rich crop.
Enterprising farm man
A general store began;
Next year a blacksmith came,

To build a shop in frame.
Others saw prospects fair,
Brought their families there.
Remained through the season;
Found climate good reason
To stay as village grew,
And welcomed old and new.

Hills around, protection,
Seemed to be perfection.
Postoffice; flour; saw mills,
Barber, baker showed skills.
Bank and lawyer found space,
Newspaper, printing place.
Hardware, and pharmacy,

Clothing, jewelry, creamery,
Freight, granary, warehouse —
Hotel, cleaners, showhouse.
Doctor, dentist, filled need,
Cafes, hungry did feed.
Later came the railroad,
Tramway grains yields to load.
Firemen answered loud bell;
"Big fires" brave deeds could tell.
Through searing flames and flood,
Staunch pioneers still stood.
Gas stations must replace
Horsebarn in mileage race.
Homes, churches, stores and school,
Soon needed council rule.
Folks did appreciate,
Vote and cooperate.
Built swimming pool in park,
For War Memorial mark;
Roofed stage for concert band,
Made ball field, lights and stand.
Where Main Street gently bends,
With quiet pride, good friends
Sought new school and flood dike;
Deep wells for lawns we like.
There son's the history
Of Kendrick village — see?

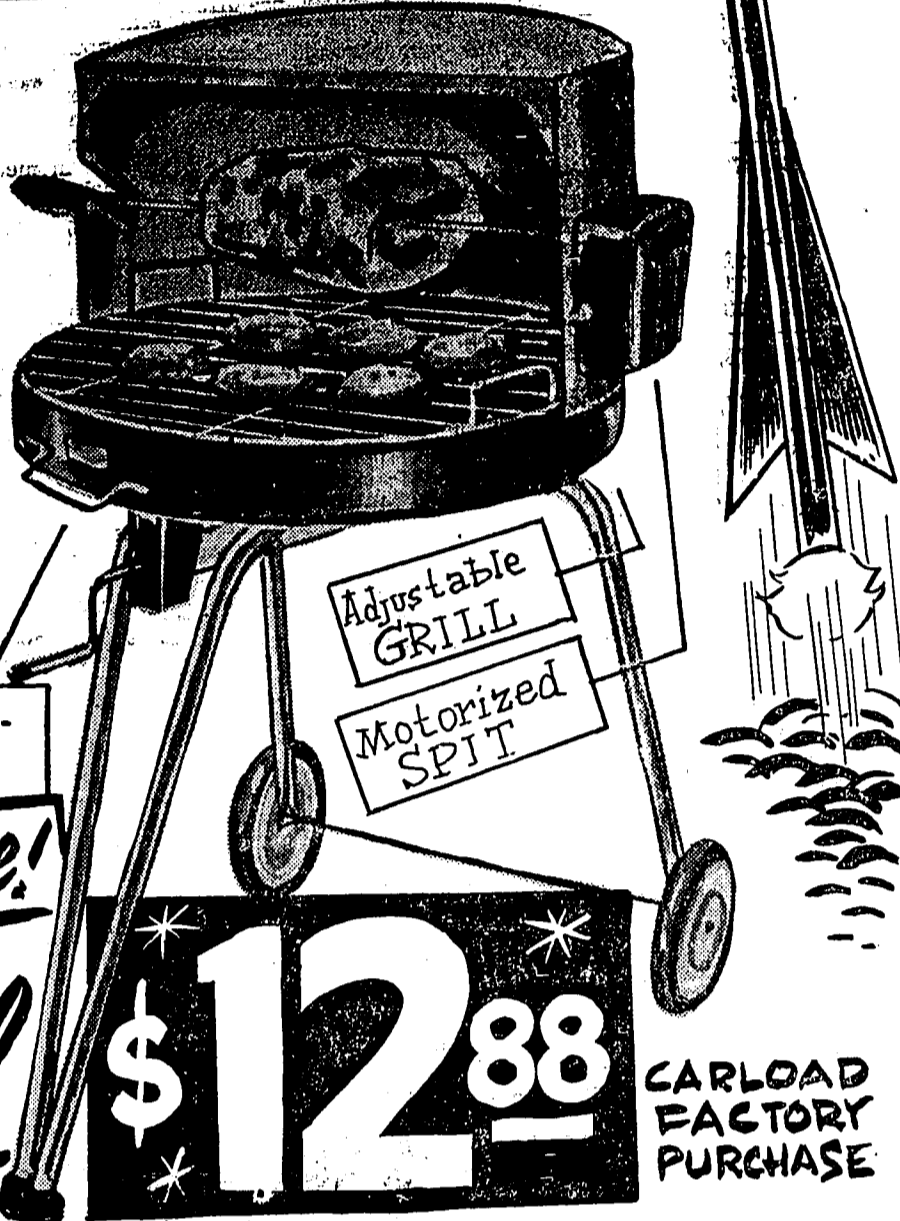


**Sale Starts
Monday,
April 4**

- FLORAL SHOVEL**
Regular \$1.70 **SPECIAL \$1.19**
- GARDEN RAKE**
Regular \$2.45 **SPECIAL \$1.67**
- GARDEN HOE**
Regular \$1.85 **SPECIAL \$1.37**
- HOMETOWN POWER MOWER**
4CYCLE B&S MOTOR
Regular \$59.50 **SPECIAL \$47.88**
- 14" PIPE WRENCH**
Regular \$5.49 **SPECIAL \$3.94**
- HACK SAW**
Regular \$1.00 **SPECIAL 77¢**
- STAINLESS STEEL FLATWARE**
Comparable \$15.00 value **Spec. \$6.98**
- OUTDOOR CLOTHES DRYER**
182' PLASTIC LINE
Regular \$16.98 **SPECIAL \$10.88**
- BIG 7" POWER SAW**
Regular \$44.88 **SPECIAL \$29.68**
- CAKE CARRIER**
Regular \$3.49 **SPECIAL \$2.49**
- TOOL CHEST 19 X 6 X 6 1/2**
Regular \$4.25 **SPECIAL \$2.97**
- SWIVEL BENCH VISE**
Regular \$5.95 **SPECIAL \$3.96**
- SLIPING BAG 3lb. DACRON**
Regular \$29.95 **SPECIAL \$17.88**
- 20 lb. CHARCOAL BRIQUETS**
Regular \$2.00 **SPECIAL \$1.66**
- FOLDING STEEL TABLE**
Regular \$13.95 **SPECIAL \$8.88**
- FIELDERS BASEBALL GLOVE**
Regular \$9.95 **SPECIAL \$6.88**
- BASEBALL BAT**
Regular \$2.70 **SPECIAL \$1.98**
- OFFICIAL SIZE BASEBALL**
Regular \$2.00 **SPECIAL \$1.49**
- 25' TROUBLE LIGHT CORD**
Regular \$2.20 **SPECIAL \$1.77**
- 3 LITE POLE LAMP**
Comparable \$19.95 **Special \$10.88**
- MANY, MANY MORE ITEMS
TOO NUMEROUS TO MENTION**

BARBECUE BRAZIER

A bargain that's really out of this world. Gleaming gold finished hood with tubular legs. Crank adjustment for grill height. Heavy duty electric spit motor with switch. This is *not* a light promotional model. Rather, it is one selected from our deluxe line. On sale while supply lasts.



24" STEEL BOWL ---
GUARANTEED
NOT TO BURN OUT!

\$25 Value!
Special \$12.88

**CARLOAD
FACTORY
PURCHASE**

| | | | | |
|---|--|--|--|---|
| 8 GALLON PAIL Reg. \$4.95. Unbreakable plastic. Use for kitchen garbage, diaper pail, etc. Special 3.33 | Barbecue Thermometer Reg. \$1.98. Short stem. For roasts, poultry, etc. Barbecue correctly. Special 1.49 | MEDICINE CABINET Reg. \$4.79. Mirror size 14" x 20". Two shelves, white enamel. Special 3.59 | 5 FT. STEP LADDER Reg. \$6.30. Handy for cleaning, painting, repairing. Sturdily constructed. Special 3.99 | PLASTIC PAIL Reg. \$1.49. Terrific bargain. 11 quart. Heavy grade plastic. Colorful. Special 66c |
| STAINLESS STEEL BOWL Reg. \$3.00. Fits popular mixers. 4 quart. Unbreakable; always gleaming. Special 1.77 | GARDEN SHOVEL Reg. \$2.75. Long handle, round point, regular type. Sturdily made. Special 2.17 | BARBECUE BASKET Reg. \$5.50. Attaches to spit bar. For steaks, chicken, wieners, etc. Special 3.88 | EXTENSION CORD Reg. \$5.20. Heavy duty for outdoor use; power mowers, etc. 50 ft. Special 3.77 | 50 Foot Plastic Hose Reg. \$5.35. Full 1/2". Quality made to our specifications. Guaranteed. Special 3.27 |
| SPRINKLING 6 QT. CAN Reg. \$3.59. For watering; fertilizing; applying weed killer. Galvanized. Special 2.69 | AIR MATTRESS Regular \$11.95. Tough, heavy duty rubberized fabric. Brass valves. Pillow. Special 6.96 | WAVE TYPE SPRINKLER Reg. \$5.95. Automatic dial control for spray area. Swinging spray. Special 3.77 | FOOD CONTAINER Regular 39c. Unbreakable plastic. Half gallon size. Tight fitting lid. Special 26c | 2 1/2 Gallon Gas Can Reg. \$2.59. Flexible 8" spout. 2 1/2 gal. plus oil capacity. Special 1.79 |

**U. OF I. COED
CONTEST WINNER**

U. of I., Moscow — Pert, bron-haired Camille Ann Johnson, an 18-year-old University of Idaho freshman from Pocatello has been chosen as "Miss Wool" of Idaho.
She will represent the state's wool industry at the Miss Wool of America pageant to be held at San Angelo, Texas, May 9 to 15. Miss Johnson was selected from among college women candidates from all parts of the state.
The Idaho coed is not only pretty, she has better than a "B" grade average as a language major. Now taking French, Miss Johnson hopes to become multi-lingual.
"Most people are surprised when I mention it, but I want very much to learn the Russian language, too," she said. "It will be difficult, but certainly interesting."
If successful at the national level of the contest, Miss Johnson will win a \$15,000 wardrobe, visit leading fashion centers in the U. S., and make numerous appearances in public and on television.
A 1959 graduate of Pocatello high school, she is a daughter of Mrs. A. D. Johnson Heaps, 224 N. 14th Street, Pocatello.

**WEED MEETINGS
AT AN END**

Moscow — County weed control meeting are at an end, and over 350 farmers attended them.
Both attendance and interest were good, reports Home Futter, Latah county agent.
With the restrictions on the use of aminotriazole as a weed killer, many more farmers are planning to use spot cultivation as a weed killer this summer.

**DELICIOUS HOME
BAKERY ITEMS
HOME COOKED
MEALS
Try Them!**
Milk, Buttermilk
Ice Cream of Your
Choice
PHONE 4031
**KENDRICK BAKERY
& LUNCH**

**the
Continental
Look
IN SELF-WINDING
WATCHES**

Wyler
DYNAWIND
Smart Slim Styling Precision Performance
The exciting "Continental Look" that's sweeping America. In a self-winding watch quality made in every way with this triple guarantee:
Exclusive Wyler Incaflex balance wheel absorbs shock, prevents breakdowns... fully guaranteed against breakage.
Ordinary balance wheel—rigid spokes relay shocks to delicate balance mechanism, causing 4 out of 5 watch breakdowns.

Graduates Get Your \$5.00 Gift Certificate Good On Any Wyler Class of '60 Watch

ABRAMS HARDWARE

PHONE 4051

FRANK ABRAMS

KENDRICK

**VARIETY & GIFT
STORE**
Cecil Choate Phone 5921
Kendrick

THE Bull itin



Published Weekly by the Union Oil Service at Kendrick
W. L. "Bill" Rogers, Editor

HELLO, FOLKS:

Doggone it, we thought that "spring had sprung" last week, but from the amount of moisture falling, we know better. However, now's the time to check your supplies of diesel fuel, gasolines, lubricating oil and greases and motor oils, and call us at 4251 for the best — Union.

Girl: "How can I be certain that you love me?"

Young Man: "Because I can't sleep nights for thinking of you."
Girl: "What does that prove? Papa can't sleep nights either for thinking of you."

Hey! How about the tires on your car, pickup or truck? Are

they "banana peels" or ready to give you safe summer travel? Better check and then see us. We love to trade tires!

Judge: "Alcohol, and alcohol alone, is responsible for your miserable condition."

Prisoner: "Oh, thank you so much, yer Honor. You are the first one who hasn't said it's all my fault!"

Have you tried "Royal Triton Motor Oil? Beyond a doubt the finest. If not, come in and talk it over with us. We'd love to give you real motoring satisfaction.

Always travel "Union".

CAMERON SECTION ACTIVITIES VARIED

BY MRS. HARL WHITINGER
Phone R1825

A Reminder

Don't forget to come to the card party, March 31 (Thursday evening) at 7:00 at the Leland Club House, given by the Leland-Cameron area. The party is a method of raising funds for the American Cancer Society.

Each family in the area is asked to bring cookies, card tables and cards.

Club Meeting

Twenty-five ladies gathered at the hall last Tuesday afternoon from various Clubs, to hear the talk on "Mental Health" given by Carl Boyd from the Idaho State Hospital North. It was very interesting and enjoyed by all.

The Cameron Club group served refreshments at the close of the afternoon.

Other News

Mr. and Mrs. Eldon Glenn, Mr. and Mrs. Wilbert Brunsiek and Mrs. Albert Glenn spent the day last Wednesday with their brother-in-law and sister, Mr. and Mrs. Clay Albright — helping Mrs. Albright celebrate her birthday anniversary.

Mr. and Mrs. Harl Whitinger were Moscow and Lewiston visitors on Thursday, calling on their son Ray, (Lewiston) who is a "shut-in" caring for an injured foot.

Miss Loeda Meyer, a student at P. L. C. Parkland, Wash., spent the week-end here with her parents, Mr. and Mrs. Herman Meyer, and attended the Reception honoring her mother, Sunday afternoon. She returned to her studies Sunday evening.

Mr. and Mrs. Walter McCall and Mr. and Mrs. James Whitinger and Janis were Sunday dinner guests of Mr. and Mrs. Harl Whitinger. All attended the Meyer Reception at Leland in the afternoon. Mr. and Mrs.

Kendrick Theater

FRIDAY AND SATURDAY

THE BIG CIRCUS

The Glamor of Circus Thrills in Cinemascope and Color!

— With —

VICTOR MATURE

RHONDA FLEMING

RED BUTTONS

GILBERT ROLAND

VINCENT PRICE

Cartoon — Shorts

Shows Start at 7:30. One Show Each Evening

65c Admission 25c

Robert Draper were evening visitors. Mr. and Mrs. Ervin Lohman spent Sunday afternoon and the night with his mother, Mrs. Hattie Lohman at Kendrick. Mrs. Lohman was taken suddenly ill Sunday afternoon.

Mr. and Mrs. Bill Randall and daughter and Mr. and Mrs. Ralph Rensink, all of Lewiston, were Sunday dinner guests of Mr. and Mrs. Stanley Hepler and son Donnie.

Mrs. Stanley Hepler and Mrs. Ervin Lohman and daughter Sharon were Spokane visitors last Wednesday and Thursday.

Linda and David Newman spent last Tuesday evening with their grandparents, Mr. and Mrs. Fred Newman.

Terry and Jimmy Allen spent last Wednesday with their grandparents, Mr. and Mrs. Fred Newman, while their mother attended a meeting and banquet at Orofino — honoring the Clearwater County 4-H leaders.

Mr. and Mrs. Glen Newman and family were Sunday evening visitors in the home of his parents, Mr. and

INSURANCE!

FIRE —

AUTO —

CASUALTY —

THEFT —

LIFE

BONDED REAL ESTATE BROKER

BOB MAGNUSON AGENCY

PHONE 4271

KENDRICK

TIME TO THINK ABOUT THOSE
BABY CHICKS

LARRO STARTER MASH AND ALL
OTHER CHICK FEEDS

For Your Chick Feed Needs

see

Kendrick Rochdale Company

KENDRICK, IDAHO

OUR GARDEN SEEDS ARE ON DISPLAY —

Inland Flower and Vegetable
We will also have Onion Sets and Seed Potatoes
Yes — We have Ladies Garden Gloves

NEW

Pillsbury Hash Brown Potatoes —

8 Servings 45¢

Meco Pears, No. 2½ tins, 3 for 95¢

M.J.B. Coffee, 4-lb. can \$2.95

Kendrick Table Supply

"Your Friendly Store"

Phone 5741 Walter and Marguerite Silflow

Long's Is

HEADQUARTERS
FOR

MEN'S WORK CLOTHING

MEN'S WORK SHOES
A Large Stock To Select From — And
Priced Right!
WOLVERINE FARM TYPE LOGGER
PAIR \$14.95

MEN'S 8-IN. CREPE SOLE SHOES
\$12.90 TO \$16.90 PAIR

MEN'S RANGER 8-IN. PLASTIC SOLE
This Is a New Number. See it at
PAIR \$12.90

FRIEDMAN-SHELBY LIGHTWEIGHT
LOGGER TYPE SHOES
This Is One of Our Biggest Sellers
PAIR \$15.90

MEN'S 8-INCH SPECIAL
Ask To See This Shoe
PAIR \$10.90

NOTE THESE LOW PRICES

G. I. Sox, pair 59¢
Wool Mixed Work Sox, pair 39¢
Cotton Work Sox — 3 pair \$1.00
Canvas Gloves, 12 oz. — 3 pair \$1.00
Wolverine Pigskin Gloves, pair \$1.45
Baseball Caps, each \$1.00

N. B. LONG & SONS

PHONE 5951

SINCE 1908

SHORT'S FUNERAL CHAPEL

MOSCOW, IDAHO

PHONE 31001

Fresh and Cured Meats at Blewett's — Kendrick

IT isn't any April Fool joke Our Prices Are Right

Specials This Week-end

Pillsbury Double Dutch Devilsfood Cake Mix,
2 pkgs. 59¢
Armour's Star Corned Beef Hash and 1 doz. Eggs 73¢
3 Dozen Fresh Eggs \$1.05
Tastewell Tomato Juice, 46-oz. Tins, 4 for \$1.00
Bradshaw's 3-Bear Honey, 5-lb. Pail \$1.25
Carrots In Cello Bags, 2 bags 25¢
Cube Steak, lb. 79¢

OTHER MERCHANDISE

Stock Up Now On Garden and Flower Seeds — Here!
New, Modern Color Keyed Brooms \$1.79
Hanset Brothers Brown Beauty Broom \$1.89
We Still Have a Few Sacks of Those Good Dry
Land Potatoes, 100-lb. Sack Only \$5.00

BLEWETT'S CASH GROCERY

PHONE 4921

KENDRICK

PHONE 4921

Mrs. Fred Newman.
Mrs. Louise Cridlebaugh and daughter Shirley, and granddaughter Tracy Gruelle were Sunday evening supper guests of her aunts, Ida Stoneburner and Emma Hartung.

The Geo. Allen family visited Saturday evening with her parents, Mr. and Mrs. Fred Newman.

Ida Stoneburner and Emma Hartung were Sunday dinner guests of their sister, Mrs. John Schwarz and sons Ernest and Lawrence.

Mr. and Mrs. Glen Hansen were Sunday dinner guests of Mr. and Mrs. Herman Meyer. Evening visitors were Rev. and Mrs. Theo Meske and family, Mrs. Otelia Schmidt of Lewiston, and Mr. and Mrs. Marvin Silflow and family.

Mr. and Mrs. Aug. Brammer are assisting with carpenter work at the Wilbert Brunsiek home.

Mrs. Aug. Brammer and Mrs. Otto Kruger visited with Mrs. Wilbert Brunsiek last Thursday.

Mr. and Mrs. Gus Kruger spent Friday evening with Mr. and Mrs. Wilbert Brunsiek.

Mr. and Mrs. Ernest Brammer and Jolene and her parents, Mr. and Mrs. Roy Ramey, are spending a few days vacationing on the coast.

Mr. and Mrs. Harl Whitinger are spending a few days of this week at the home of her brother, Marvin Hoffman, at Kalispell, Mont.

PAGE CHARLEY PADDOCK

"I can catch the 6:15 train," explained the hiker, "if you'll let me cut across your field."

"Go ahead," said the farmer, "but you'll catch the 5:45 if my bull spots you!"

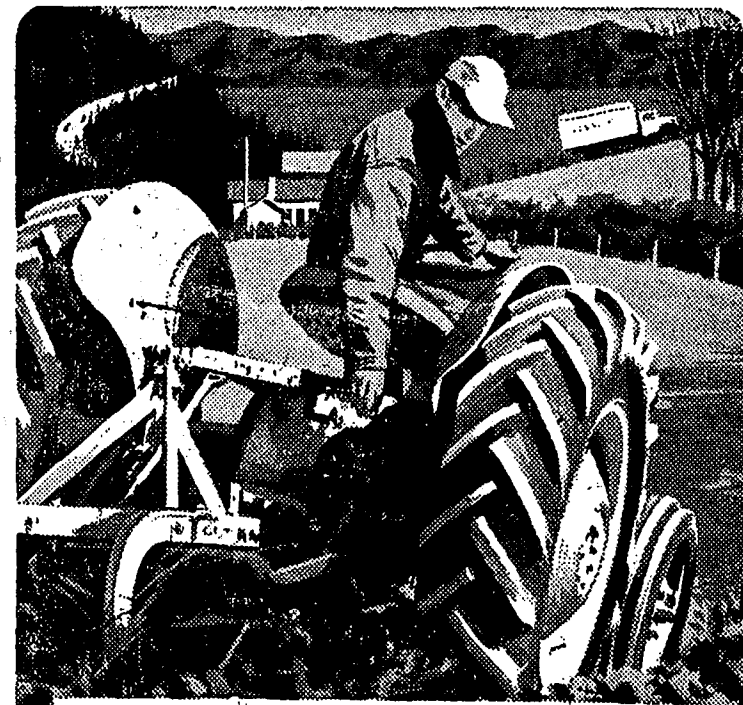
OLNY TOO TRUE

"I can't marry him, mother. He's an atheist. He doesn't even believe in Hell!"

"Go ahead and marry him, dear. Between the two of us, we'll convince him he's wrong."

DEFINITION

Horse sense is that faculty which keeps horses from betting on people!



PERFORMANCE PLUS ECONOMY

You get both with Chevron Gasoline whether you use it in your tractor, truck or car. Now higher in octane than ever before, it delivers power and acceleration for the performance you need.

Economical, too! It gives you carburetor-cleaning Detergent-Action for smoother idling and lower gas consumption.

For any Standard Oil product, call

5711



KENDRICK GARAGE CO.

KENDRICK, IDAHO

E. A. DEOBALD, Propr.