



... at 10,000 Rexall Drug Stores

**Rexall** **Twin Value Days are Here!**  
 "A Blessed Event for the Family Budget"

**ORIGINAL ONE CENT SALE**

**TWO IDENTICAL PRODUCTS for the Price of only 1+1c**

**4 BIG SALE DAYS** WEDNESDAY FRIDAY THURSDAY SATURDAY

**DAILY SPECIALS**  
 Super Values for this Event!  
 (Not 1c Sale Merchandise)

**ON SALE WED.**  
 Homemaid Assorted **CHOCOLATES**  
 2 pound box **99c**

Helen Cornell **BUBBLE BATH**  
 Reg. \$1.00 **43c**

**ON SALE THURS.**  
 Milk of Magnesia **TOOTH PASTE**  
 \$1.50 value  
**3 tubes 59c**

18" x 36" Turkish **BATH TOWELS**  
 You'd expect to pay at least 49c **23c**

**ON SALE FRI.**  
 COMBINATION!  
 Klezno 300's **FACIAL TISSUES**  
 and 2 bottles of Ilosol, 8 Oz.  
**HAND LOTION**  
 \$1.75 value  
 All for **76c**

Helen Cornell **SHAMPOO**  
 plus Defender Shampoo and  
**BATH SPRAY**  
 \$1.64 value **Both for 69c**

**ON SALE SAT.**  
 Cascade Starlet **BORDERED STATIONERY**  
 30 sheets; 24 envelopes  
**\$1.00 VALUE 39c**

Exceptional Value! 18" x 32" Edged **TEA TOWELS**  
 15 1/2c each **6 for 89c**

**HUNDREDS MORE TOO NUMEROUS TO ADVERTISE!**

<b>MILK OF MAGNESIA</b> In the blue bottle. Reg. 39c Pt. <b>2 for 40c</b>	<b>ASPIRIN</b> Purest quality! 5 gr. Reg. 49c. 100's <b>2 for 50c</b>
<b>LADY HELEN TABLEWARE</b> Reg. 19c TEASPOON 2 for 20c REG. 50c KNIFE . . . 2 for 51c REG. 35c FORK . . . 2 for 36c REG. 35c Soup Spoon 2 for 36c	<b>ANTISEPTIC</b> Ea. Reg. 69c Pt. <b>2 for 70c</b>
<b>RUBBING ALCOHOL</b> Reg. 39c Pt. <b>2 for 40c</b>	<b>RUBBER GLOVES</b> Reg. 75c Pr. All sizes. <b>2 for 76c</b>
<b>CHRISTMAS CARDS</b> Box of 25 MEDFORD Reg. 50c <b>2 for 51c</b>	<b>Tooth Powder</b> Reg. 29c. 2 1/2 oz. <b>2 for 30c</b>
<b>MINERAL OIL</b> Reg. 59c Pt. <b>2 for 60c</b>	<b>TOOTH BRUSH</b> Med. size; ass't'd shapes Reg. 15c <b>2 for 16c</b>
<b>HORMONE CREAM</b> Helen Cornell. 1 1/2 oz. . . . . REG. \$1.00 <b>2 for 1.01</b>	<b>ADRIENNE COSMETICS</b> Any 2 identical items. . . . . REG. 75c <b>2 for 76c</b>
<b>PARTY MATS</b> Gay Nineties design. . . . . REG. 9c <b>2 for 10c</b>	<b>GLASS TUMBLER</b> Safedge. 9 1/2 ounces. . . . . REG. 5c <b>2 for 6c</b>
<b>GLASBAKE CUSTARD CUP</b> 4 ounces. . . . . REG. 5c <b>2 for 6c</b>	<b>EXTENSION CORD</b> 6 foot. . . . . REG. 49c <b>2 for 50c</b>
<b>WRITING PAPER</b> Cascade Elite, 50 sheets. . . . . REG. 65c <b>2 for 66c</b>	<b>ENVELOPES</b> Cascade Ulngr, 50's. . . . . REG. 65c <b>2 for 66c</b>
<b>SPEED GLAZE</b> Elkay's. For Autos. . . . . REG. \$1.00 PINT <b>2 for 1.01</b>	<b>WATER BOTTLE</b> Victoria. 2 quart. . . . . REG. \$1.89 <b>2 for 1.90</b>
<b>HAIR TONIC</b> Silique Cream, 5 ounces. . . . . REG. 49c <b>2 for 50c</b>	<b>CHILD'S VITAMINS</b> Polycaps Multi-vitamins. 72's \$2.00 SIZE <b>2 for 2.01</b>

Sale Dates Oct. 19 - 20 - 21 - 22  
**THE RED CROSS PHARMACY**  
 Kendrick, Idaho

**Boy Scout News**  
 The last meeting of the Kendrick Boy Scout troop was opened with an entirely new "air." Everyone had the feeling that "they were really rolling." Already future plans are being discussed and they look promising for each of the boys.  
 On Sales Day, the Scouts took in quite a sum. They set up a cat stand called "Cats' Alley," in which the idea was to knock cloth cats from a board. That evening, and up until 11:00 p. m., the boys ran the bowling alley. Popular prices were used for each and the sum of \$67.65 taken in. This made the Kendrick Scouts the "richest troop" in the council.  
 Since the boys have earned this money they are going to try and stay in good standing in the Lewis & Clark Council. This will take a lot of hard work, but each Scout now feels the troop capable of doing so.  
 Monday evening Lee Jones' patrol beat Bob McCall's patrol in a game of "Steal the Bacon." Time was taken for roll call and announcements, and the meeting then adjourned.  
 The Scouts wish to thank George Brocke for the use of his bowling alley and Clarence Perryman for the "baseball throw"; also Forrest Westrov for treats at the Kendrick Cafe on a previous occasion. — Benjie Cook, Scribe.

**Will He Fire The Cannon?**  
 U. of I. Moscow — Gov. C. A. Robins of Idaho will be cannoner for a day — maybe. If the University of Idaho Vandals defeat the Washington State Cougars on the gridiron Saturday, the governor has agreed to fire an ancient cannon echoing the triumph.  
 The cannon, a relic of the Civil War, stands in front of the Tau Kappa Epsilon fraternity house. It is fired every time Idaho wins a football game. Ordinarily the cannoner duties fall to a lowly pledge, but the Vandals haven't defeated the Cougars since 1925, and the Tekes figured a victory over them Saturday would be something pretty extra special. They invited Gov. Robins to do the firing.  
 "Nothing," said the governor in replying, "would give me greater pleasure than to signal an Idaho victory over Washington State College."

**Holds Quarterly Conference**  
 The Rev. Jos. H. Beall, supt. of the Walla Walla district of the Methodist church, presided over a joint quarterly conference of the Kendrick and Leland church, held at Kendrick on Tuesday evening. He presented the general objectives of the present program of the Advance for Christ and His church.  
 He mentioned an increase in the number of people joining the church on profession of faith; an increase in the giving to the general missionary enterprises of the church, and the acceptance of extra missionary projects at home and overseas.  
 Dr. Beall was the over-night guest of Dr. Coulter on Monday and Tuesday.

**Receives First Scholarship**  
 U. of I. Moscow — First student to receive one of four \$500 scholarship at the University of Idaho provided this year by the Standard Oil Co. of California, is Ralph DeMarr of Mountain Home, it was announced Monday by H. E. Lattig, director of student affairs.  
 A sophomore, majoring in physics, DeMarr attended the Southern Idaho College of Education last year, where he was an honor student. While a senior at Mountain Home high school he was awarded the Bausch & Lomb plaque for outstanding work in physics.

**To Hold Sale**  
 The Teakean ladies "Sit and Sew Club" is holding its bazaar and sale of needlework at the Teakean Grange Hall, 8 o'clock, Friday, Oct. 21.  
 Lunch will be served after the sale. A good time is planned and everyone is invited. Adv. 40-2

**Bethany Lutheran Church — Big Bear Ridge**  
 Rev. John Arne Helmeseth, Pastor  
 Oct. 16—Divine Worship Service Sunday evening at 7:30. A friendly welcome is extended to everyone.

**Apathy Blamed for Socialism**  
**Savings Leader Says Business Men Responsible**  
 Apathy on the part of American business men can bring socialism to the United States as it has to England, Morton Bodfish of Chicago, chairman of the United States Savings and Loan League executive committee, said here yesterday.  
 "It wasn't the professional socialists or the labor leaders that made socialism in Britain possible," he declared. "They merely reaped the harvest. The labor government didn't have to pass a single piece of major legislation in order to (socialize) building."  
 He explained that laws paving the way for England's journey into socialism had been gradually placed on the books by conservative, liberal and coalition governments for nearly 100 years.  
**Points to England**  
 "Business men in England let the present government dominance in home building come about by saying 'let's let the government do it,'" he declared. "They merely reaped the harvest. The labor government didn't have to pass a single piece of major legislation in order to (socialize) building."  
 He explained that laws paving the way for England's journey into socialism had been gradually placed on the books by conservative, liberal and coalition governments for nearly 100 years.  
**Points to England**  
 "Business men in England let the present government dominance in home building come about by saying 'let's let the government do it,'" he declared. "They merely reaped the harvest. The labor government didn't have to pass a single piece of major legislation in order to (socialize) building."  
 He explained that laws paving the way for England's journey into socialism had been gradually placed on the books by conservative, liberal and coalition governments for nearly 100 years.  
**Points to England**  
 "Business men in England let the present government dominance in home building come about by saying 'let's let the government do it,'" he declared. "They merely reaped the harvest. The labor government didn't have to pass a single piece of major legislation in order to (socialize) building."  
 He explained that laws paving the way for England's journey into socialism had been gradually placed on the books by conservative, liberal and coalition governments for nearly 100 years.

**WE DELIVER**

MOBIL OIL  
 MOBIL GAS  
 MOBIL HEAT 100  
 MOBIL FUEL DIESEL  
 MOBIL LUBRICANTS  
 (Of All Kinds)  
 We Will Order Any Special Items Desired

**J. M. & M. F. HEDLER**  
 Representing The  
**General Petroleum Corp.**  
 KENDRICK, IDAHO

Business Phone 061 Residence Phone 917

**NOTICE!**

**The Month of October Is 'Pay Up' Time**

If you have an Account with us, **PLEASE** Come in and **SETTLE**, as we Can Not Carry Your Account any longer --- we must have **CASH** or a Bankable Note.

"CUSTOMERS" Please Co-operate With Us.

Signed:  
 Kendrick Bean Growers  
 Geo. F. Brocke, Mgr.

**Kendrick Bean Growers**  
 KENDRICK Phone 971 IDAHO

**NOTICE**

SEE US FOR YOUR INSURANCE NEEDS

Have you checked your coverage lately? Have you ample protection according to present values? We represent the Home Insurance Company of New York — one of the largest and strongest companies.

We also solicit farm mortgage loans and any other loans consistent with good business.

United States Savings Bonds May Be Purchased At This Bank

**THE FARMERS BANK**  
 Herman Meyer, President  
 Warney May, Vice President  
 A. O. Kanikkeberg, Cashier  
 L. D. Crocker, Asst. Cashier

Member Federal Deposit Insurance Corporation

**Beef... and Vegetables**

**"S-TEW"**

Yes, it's time for a kettle-full of good old-fashioned mouth-watering beef stew . . . full of tasty beef and fresh vegetables. Stock up on our quality produce and meats today!

FRESH PRODUCE	FRESH MEATS
CARROTS	HAMBURGER
CABBAGE	ROASTS
ONIONS	STEW BEEF
POTATOES	SAUSAGE
CELERY	SLICED HAM

OUR LOW PRICES WILL SURPRISE YOU

**Kendrick Table Supply**  
 FLOYD MILLARD PHONE 581

## CUSTOM MACHINERY STEAM CLEANING AND PAINTING

I have obtained a modern, portable steam cleaner, and will now come to your farm and steam clean and paint (if desired) any farm machinery and equipment.

HOURLY OR CONTRACT RATES

# Jack Browning

PHONE 526                      JULIAETTA, IDAHO

### Wives Are Entitled To Credit

U. of I., Moscow — "Wives who have helped their G. I. husbands through the university should be given a degree, too — P.H.T., which stands for 'Putting Husbands Through'." This comment by President J. E. Buchanan at the 1949 University of Idaho commencement exercises inspired the lead editorial in Collier's magazine this month.

After lauding the veterans themselves for the way they bucked down to studying, the Collier's editorial pointed out that "we didn't happen to meet up with any veterans whose impatient wives had forced them out of school and into the first job that came along. We did know of a good many GI brides who, with a few scrimped dollars and a lot of ingenuity, converted bare and cheezy dwellings into something resembling a home."

The editorial concluded: "These are the wives of what is probably the best-educated college generation in our history. In 15 or 20 years its members will be the leaders of this country. And if someday, we hear those leaders say that they 'owe it all to the little woman' we'll believe them. But we don't think the girls should be made to wait that long for recognition. We are in favor of giving them Mr. Buchanan's P.H.T. right away — and a good loud cheer besides."

### Cows Production Tested

The average Idaho cow produced 25 pounds of milk each day during July. She is responsible for nearly 35 pounds of butterfat in the month.

These facts were shown this week by G. C. Anderson, University of Idaho extension dairyman, in a summary of figures from 24 dairy herd improvement associations. Data was received on 8,882 cows in 546 herds. All but three of the 27 associations in the state were included in the report.

Anderson said production figures were for only those dairy cows in the testing herds and did not represent stock not included within associations. Dry cows within the groups were figured with the stock being milked.

Average production of milk was 794 pounds. Average fat 33.6 pounds. Testing records were a serious business not only to the dairy farmers, but to certain cows that did not come up to a passing mark — 94 non-profitable cows being sold.

### Income And "Outgo" High

Today the combined income of all people in the U. S. is 400 times what it was in 1789 when President Washington took office. But government, today, is spending 11,000 times as much.

Rhubarb is one of the easiest garden products to prepare for freezing. No cooking is involved and addition of sugar is not necessary.

### American Merchant Marine Faces Serious Competition

Resurgence of the merchant shipping fleets of maritime nations and the building up of such fleets by nations previously possessing little or no shipping, poses serious competitive factors for the American merchant marine in the foreign trades.

This was evident from a survey of the world's merchant fleets, highlights of which were made public by National Federation of American Shipping. Among the highlights were:

Upon completion of vessel construction currently underway or on order, the world's merchant fleet of oceangoing ships of 1,000 gross tons and over will total almost 89 million deadweight, or 12% larger than in 1939, excluding U. S. government-owned tonnage.

At the beginning of 1949 a total of nearly 12 million cwt. of merchant shipping was on order or under construction in the world. Of this amount Great Britain was building more than half; the Marshall Plan nations as a group accounted for 70 per cent; the United States only 12 per cent.

War losses in passenger ships largely used as troop transports have not been fully replaced. The United States passenger fleet (ships capable of carrying more than 100 persons) is today 51.6 per cent less than prewar. Passenger fleets of other nations have also declined, but not as severely as that of the U. S. The passenger fleet under the British flag is 27 per cent less than prewar; the Marshall Plan nation's aggregate fleet 37 per cent, and overall world passenger fleet 44 per cent.



## New Plastic Foam Used in Insulation

### Material Is Called Lightest of Solids

The world's lightest solid an amazing plastic foam that swells up when baked like a cake to 100 times its original volume—has been developed by Westinghouse scientist for use as a new insulating material.

The new product is expected to find its way into many uses in appliances used in farm homes and about the farm.

Even lighter than some gases, the new material weighs from 10 to 20 times less than the fluffy meringue on a well-baked pie.

Robert F. Sterling, 29-year-old chemist, and the man chiefly responsible for the new product, said:



### Use of Schmidt Camera Explained by Scientists

A Schmidt camera is a type of astronomical camera, announced in 1930 by a German astronomer named Bernhard Schmidt. Light falls on a concave mirror that has the shape of part of the surface of a sphere. Such a mirror by itself cannot form a sharp image but suffers from what is called "spherical aberration," so a specially shaped lens is placed in front, according to scientists of the G. E. research laboratory. After the light rays pass through, they hit the mirror in such a way that they are focussed sharply on a film between the lens and mirror.

The advantage of such a camera is that it gathers a great deal of light and at the same time can photograph a large area of the sky. The same optical system is now used in television receivers where the picture is projected on a large screen, the picture tube taking the place of the film.

Light from its face hits the mirror and is reflected through the lens to the screen. Thus the direction of the light is just opposite to that used in taking pictures but the optical effect is the same.

Shown here is a refrigerator completely insulated with the new plastic-foam insulation material. This is the way the refrigerator looked after the insulation job was done, but before door liner and other parts were put back in place.

It is the result of a three-year search for an effective insulating material that will fill large areas, yet weigh "next to nothing."

The foam is made by heating a molasses-like synthetic resin at about 350 degrees Fahrenheit until it expands to 100 times its original volume, then solidifies. Thousands of gas bubbles entrapped in the foam "buoy" it up and give the plastic its lightness.

Foamed into pre-fabricated metal wall sections, a two-inch thick layer weighing only 300 pounds would be enough to insulate a complete six-room house, Sterling said.

Resistant to fire, moisture, fungus growth and insects, the foam is low enough in cost to be practical for many applications and uses, the scientist said.

Not only do imprisoned air bubbles give the new plastic great lightness, but they also provide it with its excellent insulating qualities. So-called "dead air" is one of the best insulators known among commonly available materials, Sterling said.

## DURING B. F. Goodrich Fall Tire Sale



**B. F. Goodrich  
DEFIANCE 995**

1.00 Down  
1.25 a Week

AND YOUR  
OLD TIRE  
6.00-16  
PLUS TAX

**FAMOUS BFG Silvertown**

For Extra Mileage . . .

- Flatter, "road-level" tread 1.50 DOWN
- Rhythmic-flexing cords 1.25 A WEEK
- Hundreds of non-skid edges SIZE 6.00-16



**KENDRICK BEAN GROWERS ASS'N**  
KENDRICK, IDAHO

# B.F. Goodrich

FIRST IN RUBBER

## Builders Supplies



IN STOCK

- WINDOWS —
- NAILS —
- INSULATION —
- MASONITE or SIMPSON BOARD on Order
- PAINTS —
- SHINGLES (In Cedar and Asphalt) —
- BUILDING PAPERS —
- PLASTER —
- SIDING —
- GENERAL ELECTRIC APPLIANCES

- DOORS —
- PLYWOOD —
- FLOORING —
- SASHES
- SHAKES
- AND OTHER ITEMS

## Kirkpatrick Lumber Co.

PHONE 083                      JULIAETTA, IDAHO

## No other low-priced car offers you all these **EXTRA VALUES**



**CERTI-SAFE  
HYDRAULIC BRAKES**



**WORLD'S CHAMPION  
VALVE-IN-HEAD ENGINE**



**CENTER-POINT  
STEERING**



**FISHER BODY  
STYLING AND LUXURY**



**Chevrolet and Chevrolet alone offers you all these EXTRA Values at lowest cost!**

The Styleline De Luxe 4-Door Sedan



**EXTRA ECONOMICAL TO OWN—OPERATE—MAINTAIN**



**CURVED WINDSHIELD with PANORAMIC VISIBILITY**



**FISHER UNISTEEL BODY CONSTRUCTION**



**5-INCH WIDE-BASE WHEELS plus LOW-PRESSURE TIRES**



**LONGEST, HEAVIEST CAR IN ITS FIELD, with WIDEST TREAD**

# McMONIGLE CHEVROLET CO.

PHONE 1891                      LEWISTON, IDAHO

### Insect Poisoning in Chickens

Chickens generally are able to consume insects without much danger of ill-effects. In fact, there is only one species that is definitely known to be poisonous. This is the rose chafer, found in the eastern United States, in Canada, and as far west as Colorado. It thrives from the latter part of May to early July and seems to be palatable to chickens. Week-old chicks die after eating 15 or 20 of these insects, according to veterinarians, but birds become more resistant to the poisonous effects as they grow older. The rose chafer harbors a toxic substance that affects the chicken's heart. Convulsions and drawing of the head and neck over the back are typical symptoms. Death of poisoned birds usually occurs within 24 hours, although some recover.

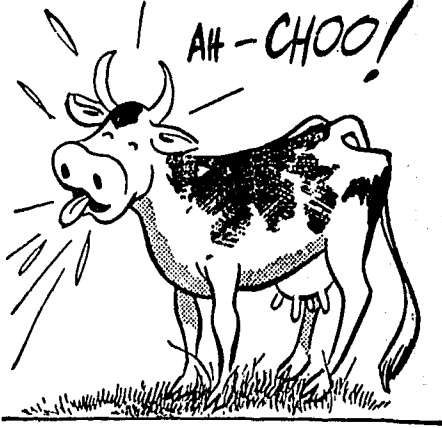
### Life Insurance Assets

Total life insurance assets of all U.S. companies now average \$722 per policyholder, the Institute of Life Insurance reports. These assets, made up largely of the invested funds held as policy reserves, represent an indirect investment by policy holders. About one-third, or \$240 per policyholder, is at work for local and federal government needs through government bonds of all types. Another third, or \$268 per policyholder, is at work in business and industry through corporate securities. Some \$145 per policyholder is in mortgages, extending financing aid to property owners, and the balance is in miscellaneous investments.

### Vitamin E Over-rated

Does the feeding of vitamin E, or wheat germ oil, boost milk and butterfat production of dairy cows? One dairy research team said it does, but now two other groups of investigators have turned up strong new evidence that it does not, according to the nutrition committee of the American Veterinary medical association. "Vitamin E is one of the most controversial elements in the whole nutritional catalogue," this committee declares. "It has been touted as a remedy for many conditions in animals, but critical tests by reputable scientists have failed to substantiate most of the claims made for it."

## Cover That Cough



"Cover that cough, smother that sneeze" is not only good advice for people in public places. It has practical meaning in the cowbarn, too.

Danger that coughing cattle may spread respiratory infections to their stablemates is highlighted in a research report from the American Veterinary Medical association.

The report describes an unusual case of tuberculosis of the eye in a heifer. A tuberculosis cow with a bad cough, stanchioned next to the heifer, is believed to have spread the disease.

AVMA points out that this case occurred in England, where bovine tuberculosis is widespread. Although tuberculosis has been reduced to a minimum in United States herds, coughers and sneezers are nevertheless a menace because they may spread all kinds of respiratory infections. Isolation of any animal showing respiratory symptoms is urged, therefore, to protect the rest of the herd.

### Field Mice Destructive To Melon Crops, Seed

Untold damage is done each year to cucumber, cantaloupe and watermelon fields by mice destroying the seed which are planted and also the plants which are up and bearing fruit. H. A. Bowers, Clemson college crop specialist, says.

Bowers explained that the meadow mouse destroys the seed after they are planted, and the pine mouse cuts off the plants at the ground.

**Packaged Language Course Made Available by Yale**

A series of "packaged" language courses based on wartime teaching developments is now being made available to the public by Yale university.

The courses, which include printed texts and between 11 and 12 hours of recorded speech, are being produced at the Institute of Far Eastern Languages under the supervision of Gerard P. Kok, associate director of the institute and assistant professor of Chinese.

Courses in Chinese and French already have been "packaged" for distribution, and plans are under way for similar courses in Russian, Korean and other languages.

The primary goal of the institute in sponsoring the series, according to Professor Kok, is to help raise the level of spoken language instruction in the public secondary schools and in colleges where the number of "native" language instructors is limited. The recorded lessons are designed to offer the purest type of pronunciation.

Professor Kok said that plans are being made for experimental use of the "packaged" courses by language students in high schools in the New Haven area. The courses are already in use by student groups at Sarah Lawrence and Seattle Pacific colleges.

The institute at Yale is the first non-commercial educational organization to offer such a program to the public.

**Insects Look for Quality in Food, Entomologist Says**

The effects of insect injury may be considerably more serious on corn to be used for seed than on corn to be used for feed, U. S. department of agriculture entomologists observe in their investigations on the protection of both seed and feed corn. This, says Dr. R. T. Cotton of the bureau of entomology and plant quarantine is because "the germ of the seed, with its high food value, is particularly attractive to insects. Thus species that are not of great importance, if we consider the mere quantity of the grain they destroy, are of concern to the seedmen because they feed almost exclusively on the germ."

What is probably instinctive in the insects is very much in line with recent scientific research in human nutrition which has emphasized the high food, vitamin and mineral values in grain germs, much of which is milled out in manufacture of the "finer" grades of flours and meals.

The flat grain beetle, cadello, almond moth, and Indian meal moth are some of the insects particularly destructive to seed corn, Dr. Cotton finds, because they make their first attack on the germ.

Research and practical tests show that a three-to-one mixture of ethylene dichloride and carbon tetrachloride is the safest fumigant to use in protecting seed corn from insect damage.

**Garden Insecticide**

"Rotenone is the most valuable single garden insecticide," say Clemson extension service specialists. "Five per cent DDT dust alone or in combination with fungicides is valuable on potatoes and cabbage, but it should never be applied within a month of harvest to any leafy vegetable or to tomatoes. "Don't handle moist plants—it spreads diseases," they caution. "This is especially true of the members of the melon family, tomatoes, and beans, but it may apply to other crops as well. Drops of moisture are easily transferred from one plant to another, and, if disease-producing organisms are present, they are widely spread."

**Television-Eyestrain**

Among the by-products of television are complaints of eye troubles by those who watch programs. Some of these troubles are imaginary, but some may be actual, according to the Better Vision institute. Persons with normal vision can get eye fatigue if they watch an object from too nearby or with the head in an uncomfortable position, and the same may apply to video-viewers. One theory is that people who report eye difficulties after watching a video screen really have been suffering all along from some visual error such as nearsightedness or astigmatism. They may not have noticed it before because they did not employ the eyes on activities comparable to focusing for long periods on a small screen filled with moving images.

**Quarantines in Britain**

From the point of view of animal health, Britain is fortunate in being an island. Such serious epidemic diseases as rinderpest, which have at times devastated the herds of her continental neighbors, have long been excluded. But in a country which imports so many animal products, strict quarantine precautions are necessary, and even the most elaborate do not always succeed. Rare outbreaks of hoof and mouth disease are promptly stamped out by drastic slaughtering and burning, with government compensation to the affected farmer.

**Idaho Manufacturing Increasing**

Boise — The number of production workers engaged in manufacturing in Idaho increased from 9,854 in 1939 to 14,602 in 1947, according to the U. S. Bureau of the Census.

In a preliminary report on the Census of Manufacturers in Idaho, the bureau report shows that the total number of employees in manufacturing, including executives, in 1947 was 16,907. Total manufacturing payroll for salaries and wages in that year amounted to \$45,748,000.00.

In measuring the "value added by manufacture" the Census bureau subtracts the costs of materials and supplies from the value of shipments. On this basis, the report shows, that the value added by manufacture in Idaho jumped from \$29,788,000 in 1939 to \$109,694,000 in 1947. This is an increase of almost \$80,000,000 in eight years or at the rate of \$10,000,000 annually.

Greatest increase in value added by manufacture came in food and kindred products in this period, during which the total increased from \$10,900,000 to \$43,700,000 according to the report.

In the lumber products industry the increase for the same period was from \$13,300,000 to \$43,400,000, indicating that this industry ranked second only to agriculture and food-products processing in the value added by manufacturing in the state during 1947, the most recent year for which records are available.

Salaries and wages paid in the lumber products industry, however, topped those paid in the food processing industry in 1947 by about \$900,000 with a total of \$19,500,000 for lumber manufacturing and \$11,600,000 in the food products industry, the report added.

Idaho ranked third in the Inter-mountain states in the value added by manufacture, with Colorado in the lead with \$290,300,000; Utah second with \$128,700,000; Idaho, \$109,700,000; Montana, \$108,200,000; Arizona, \$104,000,000; New Mexico, \$85,500,000; Wyoming, \$31,400,000, and Nevada \$27,600,000.00.

Fresh frozen Bird's Eye fruits, vegetables and juices are available at Blewett's Grocery-Market. 1-adv

**Shipping Freedom Abused**

Idaho people are "completely fed up" with abuses of permits to ship fish and game, Hugh Sproat, field representative of the Idaho Wildlife Federation, reported on his return this week from a trip through several south-central and eastern counties in which he sounded out public opinion.

In his report to Theo. H. Wegener, federation president, Sproat said that he found expressions in all 22 clubs he visited in favor of tightening the loopholes in shipping of fish and

game. "I recommend," he said, "that the officers of the federation request the state game department to withdraw shipping privileges immediately as a protective measure for fish and birds."

"I was astonished at the amount of mis-information prevalent in many sections. The matter of predator control in particular caused me to suspect an organized attempt to lead the public. I am somewhat inclined to criticize the game department for not keeping the people informed of what is being done."

"It may be of interest," concluded Sproat, "that I found no sentiment whatever for CVA. Sportsmen feel that under the present set-up they can express their criticism with hope of modification. They are very suspicious of the treatment they might receive under other circumstances."

Fresh frozen fruits, berries, juices, vegetables, fish and poultry are obtainable at Blewett's Grocery-Market. Remember: "For a Better Buy, Buy Bird's Eye." 1-adv.

**There's an easier way**



to cut down repair bills



this way

with



A Product of Standard of California

To keep repair bills down, keep the upper cylinder walls of your engine lubricated. In other words, use RPM Heavy Duty Motor Oil —specially compounded to cling to engine hot spots . . . reduce stuck rings, carbon and varnish trouble!

Distributed by  
**E. A. DEOBALD**  
Phone 713  
KENDRICK, IDAHO

**NEW WALLPAPER QUICKEST DRESS UP FOR ANY ROOM**



Enjoy a colorful new background  
See our large selection of smart modern wallpapers

**Abrams Hardware**  
PHONE 951  
KENDRICK, IDAHO

**KENDRICK BAKERY**  
And  
**COFFEE BAR**

"BAKERS FOR THE HOME"

PHONE 1161

OPEN TILL 9:00 P. M.

**Kendrick Bakery**

L. A. WRIGHT

KENDRICK, IDAHO

**SEE OUR AD.**

**In The Following Nationally Known Magazines:**

- SATURDAY EVENING POST ----- For OCTOBER 15
- LIFE MAGAZINE ----- For OCTOBER 17
- LOOK ----- For OCTOBER 11
- COLLIERS ----- For OCTOBER 11
- FARM JOURNAL ----- For OCTOBER 17

Which Tell All About *Jenall* Greatest 1c Sale Of All Time --- Read It!

YOU SEE — WE ADVERTISE IN THESE MAGAZINES AS WELL AS IN OUR LOCAL PAPER

**CHRISTMAS LAY-AWAY PLAN:**

Yes, Again we are instituting our Christmas Lay-Away Plan. If you want any item in this store for a Christmas Gift, arrangements can be made to lay it away for you until Christmas.

**VITAMINS ARE NECESSARY:**

With the coming of winter weather and the resultant lack of sunshine, Vitamins are a necessity if we are to enjoy good health during the cold months ahead. We have a fine stock in most of the standard brands.

**HAVE YOU PLAYED THAT NEW CARD GAME, "CANASTA"?**

It's literally sweeping the country! Come in and ask us about it. Fill these long winter evenings with fun and laughter.

**THAT RAT EPIDEMIC:**

For some reason or another, rats by the hundreds have moved into this section of Idaho. Don't let them over-run your buildings or home. Come in and get the latest developed rat poisons. Cheap, effective.

**RED CROSS PHARMACY**

Lewis B. Keene A REXALL Store Phone 941

It may be **LATER** than you think!



A man can die in 1/500 of a second. Man's freedom is harder to kill . . . BUT . . . time passes!

If government at any level monopolizes ways to earn a living . . . through socialistic government ownership of first one and then another business and profession . . . economic freedom will soon be gone . . . THEN . . .

It won't be long until other freedoms follow it into the never-never land of lost birthrights.

Tests of public opinion in this territory show that only a small minority of the people (less than 1 out of 7) want electricity distributed by government monopoly . . . BUT . . . the socialistic leaders of this small minority group are intent on making the electric industry the first of many to be seized by the state . . . with eventual complete dominance of your economic life.

**DON'T WAIT UNTIL TOO LATE! . . . DON'T SURRENDER TO MINORITY RULE! . . . GUARD THE ECONOMIC FREEDOM PROVIDED YOU AND YOUR CHILDREN BY AMERICAN PRIVATE ENTERPRISE! . . . DON'T LET IT BECOME THE FIRST OF YOUR FREEDOMS TO FALL — OR YOU MAY LOSE ALL!**

\*Conducted by a nationally recognized public survey organization.



YOUR ELECTRICAL SERVANT FOR MORE THAN 60 YEARS

**THE WASHINGTON WATER POWER CO.**

**THE KENDRICK GAZETTE**  
Published every Thursday morning at Kendrick, Idaho, by W. L. McCreary  
Subscription, \$2.00 per year  
Strictly Independent in Politics  
Entered at the postoffice at Kendrick, Idaho, as second class mail matter.

**Wednesday's Markets**

Forty Fold, bulk	.....\$1.88
Federation, bulk	.....\$1.88
Rex, bulk	.....\$1.88
Club, bulk	.....\$1.88
Red, bulk	.....\$1.88
Oats, 100, bulk	.....\$2.25
Barley, 100, bulk	.....\$2.15
Hannah Barley	.....(No quote)

**Beans**

Small Whites, 100	.....\$6.00
Flats, 100	.....\$6.00
Great Northern, 100	.....\$6.00
Reds, 100	.....\$6.00
Pintos, 100	.....\$6.00

**Olive Seed**

Alsyke Clover, 100	.....\$26.00
White Dutch, 100	.....\$70.00

**Egg-Prices — Dozen**

Large, Grade A	.....65c
Medium, Grade A	.....55c
Small, Grade A	.....50c

**Butter**

Butter, pound	.....70c
Butterfat	.....60c

**CHURCH NOTICES**

**Kendrick Community Church**  
Rev. J. H. Coulter, Pastor  
Morning Worship at 9:30 o'clock.  
Sunday School at 10:30 o'clock.

**Leland Methodist Church**  
Rev. J. H. Coulter, Pastor  
Sunday School at 10:00 a. m.  
Morning Worship at 11:00.

**Cameron Emmanuel Church**  
Rev. Theo. Meskie, Pastor  
Sunday School at 10:00 a. m.  
Worship Service 10:45 a. m.

**Juliaetta Lutheran Church**  
Rev. Theo. Meskie, Pastor  
Worship Service 9:30 a. m.  
Sunday School 10:30 a. m.

**Full Gospel Church — Kendrick**  
Claude G. Crawford, Pastor  
Sunday School at 10:00 a. m.  
Morning Service at 11:00 a. m.  
Young People's 6:45 p. m.  
Sunday Evening Service 7:45.  
Evangelist Cornelius Eylander is preaching every night in continuous meetings.  
Church business meeting Oct. 17 at 7:45 p. m.

Get those "Bird's Eye" fresh frozen fruits and vegetables at Blewett's Grocery-Market, Kendrick. 1-adv.

**ANNOUNCING**

**THE ANNUAL IDAHO COUNTY PUREBRED BREEDERS ASSOCIATION SALE**

**1:00 P. M.     OCTOBER 20**

**COTTONWOOD SALES YARD**  
**COTTONWOOD, IDAHO**

**STOCK SHOWN AND JUDGED AT 10:00 A. M.**

**PRIZE REGISTERED CAMAS PRAIRIE LIVE-STOCK — LISTED AS FOLLOWS:**

**1 Guernsey Heifer     3 Milking Shorthorn Cows**  
**2 Chester White Male Swine**  
**18 Hereford Bulls     13 Hereford Females**

**All Animals Bangs and T. B. Tested**

For Catalogue Write  
**J. J. DAHMEN, Sales Manager, Grangeville, Idaho**  
**HERMAN SCHWARTZ, Auctioneer**  
**W. W. FLINT, Clerk**

Serving The Finest  
**FOOD AND DRINKS**

That Money Can Buy --- In Air

Conditioned Comfort

Come In And Eat With Us

**BURT'S CONFECTIONERY**  
BURT AND VERA SOUDERS

**COMPLETE**

**Tonsorial Service**

Our Aim Is To  
Please

**Dick's Barber Shop**

DICK CUDDY     KENDRICK

**CROCKER'S GUN SHOP**  
Kendrick, Idaho

**GUN BUILDING, REPAIRING**  
**NEW SIGHTS**  
**GUNS AND AMMUNITION**  
SHOP AT RESIDENCE

**The Kendrick Beauty Shoppe**

OPEN TUESDAYS THROUGH FRIDAYS EACH WEEK  
Monday or Saturday Work by Appointment Only  
PHONE 841     KENDRICK

**WHAT-**

**A LAWSUIT AGAINST me?**

A little accident on your premises, home or business, can mean just that. Avoid this possible financial loss with our modern liability insurance policy.

**MARVIN LONG AGENCY**  
KENDRICK, IDAHO

**DR. GEO. W. MCKEEVER**  
Dental Surgeon  
Office Phone 812  
Kendrick, Idaho

**Dr. D. A. Christensen**  
M. D.  
Office Hours  
10:00 A. M. To 5:00 P. M.  
Emergency Call at All Hours on Notification  
Office in  
Kendrick State Bank Bldg.

**Ship By Truck**

Fast, Safe, Dependable  
Door-to-Door Delivery

**Walter Brocke**  
Office Phone 622     Residence 621

**BROWER-WANN CO.**

Funeral Directors  
1484 Main, Lewiston, Idaho

Our aim is to perfect ways and means of bringing you comfort and privacy, and above all, Specialized Service.  
Lewiston Phone 275

IN THE DISTRICT COURT OF THE SECOND JUDICIAL DISTRICT OF THE STATE OF IDAHO, IN AND FOR THE COUNTY OF LATAH

**FRED O. STEDMAN** and **GENEVA Q. STEDMAN**, husband and wife,  
Plaintiffs,  
vs.  
**FRANCES LABOLLE**, also known as **FRANK LABOLLE**, **LESLIE LABOLLE**, **ED. K. DENT**, **HOWARD A. DENT**, the unknown heirs and the unknown devisees of **FRANK LABOLLE**, also known as **FRANCES LABOLLE**, deceased, the unknown heirs and the unknown devisees of **ELLEN DENT LABOLLE**, deceased, and the unknown owners of the following described real property, to-wit:

Lois 24, 25, 26, and 27, Block "D", Addison's Addition to the Town of Kendrick, Latah County, Idaho, according to the plat thereof on file in the office of the County Recorder of Latah County, Idaho,  
Defendants.

**SUMMONS**

THE STATE OF IDAHO SENDS GREETINGS TO THE ABOVE NAMED DEFENDANTS:

You are hereby notified that a complaint has been filed against you in the District Court of the Second Judicial District of the State of Idaho, in and for the County of Latah, by the above named plaintiffs, and you are hereby directed to appear and plead to said complaint within twenty (20) days of the service of this summons; and you are further notified that unless you so appear and plead to said complaint within the time herein specified, the plaintiffs will take judgment against you as prayed in said complaint.

This action is brought to quiet the title in the above named plaintiffs in and to the real property described in the caption of this summons and of the complaint against the defendants above named, both known and unknown, for a decree adjudging that the plaintiffs are the owners in fee simple absolute of the real property described in the caption of the summons and complaint, and further to adjudge that that certain deed executed under date of December 5, 1921, from George R. Riggan and Sarah M. Riggan, his wife, to Frank Labolle, recorded in Book 79 of Deeds at page 471 of the records of Latah County, Idaho, was made, executed and delivered as security for the payment of a \$1,000.00 loan; that said loan has been paid; that Frank Labolle, the grantee named in said deed, and those claiming by, through or under him, have no right, title or interest in and to said real property described in said deed, said property being the property described in the caption of this summons.

WITNESS My hand and the Seal of said District Court this 27th day of September, 1949.

**BESSIE BABCOCK**, Clerk.

**WANT ADS.**

**Annual Dinner and Bazaar**  
The Cameron Ladies Aid will hold their annual supper and sale Thursday evening, Oct. 20, with serving to begin at 5:30 p. m. 41-1

**POT-LUCK SUPPER SCHEDULED**  
A pot-luck supper will be held at 6:30 at the Community Hall, Big Bear ridge, Friday evening, Oct. 14. There will be an auction sale of four quilts, lots of fancy work, and other items. Plus entertainment. Everyone is urged to bring food to the supper, which will be served free of charge. The evening is sponsored by the Ladies Guild.

**Pot-Luck Supper Scheduled**  
A pot-luck supper will be held at 6:30 at the Community Hall, Big Bear ridge, Friday evening, Oct. 14. There will be an auction sale of four quilts, lots of fancy work, and other items. Plus entertainment. Everyone is urged to bring food to the supper, which will be served free of charge. The evening is sponsored by the Ladies Guild.

**FOR LIGHT HAULING**  
CALL  
**733R OR 051**  
**WARD HELTON**  
Kendrick

**Dr. Charles Simmons**  
Optometrist  
310 Weisgerber Building  
(Over Owl Drug Store)  
Lewiston Phone 1144     Idaho

**COAL, PRESTO-LOGS and Wood**  
Commercial Hauling  
**ED. NELSON**  
Phone 673     Kendrick

**PLUMBING!**  
Service Anywhere  
**LEWIS LINDQUIST**  
PHONE 607 — KENDRICK

**FOR LIGHT HAULING**  
CALL  
**733R OR 051**  
**WARD HELTON**  
Kendrick

**JULIAETTA NEWS**

Mr. and Mrs. Arnold Zimmerman, Larry and Ronnie of Deary, were Sunday guests at the Asa Cook home.

Mrs. Gerald Ingle and Mrs. Vern Dunham picked prunes at the Asa Cook ranch on Tuesday, the prunes being given by the Cook family to the Hot Lunch program.

Georgia Cook of N. I. C. E. visited her parents over the week-end.

M. E. White was a Lewiston visitor on Saturday.

Asa Cook delivered a load of fat hogs to the Lewiston market, Saturday.

Mrs. Rose Gregory and son Vernon spent the week-end with Mr. and Mrs. Martin Dawald at Lewiston.

Mrs. McGlenn is visiting her old friend, Lulu Buchanan.

Chas. Hicks took a load of fat lambs to the Lewiston markets, Saturday.

Quite a number from Juliaetta and vicinity attended the Sales Day at Kendrick last Saturday.

**WANT ADS.**

**Annual Dinner and Bazaar**  
The Cameron Ladies Aid will hold their annual supper and sale Thursday evening, Oct. 20, with serving to begin at 5:30 p. m. 41-1

**POT-LUCK SUPPER SCHEDULED**  
A pot-luck supper will be held at 6:30 at the Community Hall, Big Bear ridge, Friday evening, Oct. 14. There will be an auction sale of four quilts, lots of fancy work, and other items. Plus entertainment. Everyone is urged to bring food to the supper, which will be served free of charge. The evening is sponsored by the Ladies Guild.

**SOUTHWICK NEWS**

Mr. and Mrs. Harvey Bales of Lewiston called in the Annie Longesteig home Sunday evening.

Mrs. Essel Stalnaker is reported to be improving from her recent illness.

Mrs. Cora Lettenmaier and Gary Smith were recent visitors in the home of her daughter, Mr. and Mrs. Carl Riggers and daughter at Gifford.

Mr. and Mrs. Given Mustoe and son Jack and Betty Colwell were Sunday dinner guests of Mr. and Mrs. Virgil Harris and family.

Mr. and Mrs. Don Cantril and daughter Sandra called on Mr. and Mrs. Roy Gertje and sons Sunday.

Mr. and Mrs. Chet McIver were also visitors in the Gertje home.

Mrs. Josie Berreman returned to her home Saturday afternoon, after spending several days here visiting with relatives.

A large number of Southwick residents attended the annual Sales Day in Kendrick, Saturday.

Wilmer Hanks is confined to his home with the flu.

The 4-H Pie Social, held at the school kitchen Friday evening was very well attended. The girls gave demonstrations on various phases of their training, which were much enjoyed by the crowd. The girls netted \$25.00 from the sale of pies, which is to be used for a camping trip next summer.

**IN THE PROBATE COURT OF LATAH COUNTY, STATE OF IDAHO**

In the Matter of the Guardianship of **DONALD FRANK FAIRFIELD**, a minor

**NOTICE OF GUARDIAN'S SALE OF REAL ESTATE AT PRIVATE SALE**

**NOTICE IS HEREBY GIVEN** that the undersigned will on the 20th day of October, 1949, at ten o'clock A. M., or within six months thereafter, subject to confirmation by the above court, sell at private sale to the highest bidder for cash, ten per cent to accompany bid, and balance payable on confirmation of sale, all of the right, title and estate of Donald Frank Fairfield, the above-named minor, to-wit, an undivided one-sixteenth (1/16) interest of, in and to the following described real property situate in Latah County, State of Idaho, and particularly described as follows, to-wit:

**Parcel No. 1**  
Beginning at the center of Section Twenty-eight (28), in Township Thirty-nine (39) North of Range Two (2) West of the Boise Meridian, and running thence North ninety-four (94) rods; thence East sixty-four (64) rods; thence in a southwesterly direction thirty-six (36) rods; thence in a southeasterly direction twenty-eight (28) rods; thence south forty-six (46) rods; thence west fifty-two (52) rods to the place of beginning and containing thirty and 9/10 (30.9) acres, more or less, also

The Southeast quarter of the Northwest quarter (SE 1/4 NW 1/4) of Section Twenty-eight (28) in Township Thirty-nine (39) North of Range Two (2) West of the Boise Meridian, in Latah County, Idaho, containing forty (40) acres, more or less, also

The Northeast quarter of the Northwest quarter (NE 1/4 NW 1/4) of Section Twenty-eight (28), Township Thirty-nine (39) North of Range Two (2) West of Boise Meridian, in Latah County, Idaho, containing forty (40) acres, more or less.

**Parcel No. 2**  
The Southeast quarter (SE 1/4) of Section Twenty-eight (28) in Township Thirty-nine (39) North of Range Two (2) West of the Boise Meridian, in Latah County, Idaho, (160) acres.

Said property will be sold either in separate lots or parcels or in such combinations as may be deemed best, or as a whole, and sealed written bids will be received any time after the first publication of this notice and before making a sale at the office of V. R. Clements, 202 Weisgerber Building, Lewiston, Idaho, or may be filed in the office of the Clerk of the above Court at Moscow, Idaho.

The undersigned reserves the right to reject any and all bids.  
Dated this 7th day of October, 1949.

**EDITH FAIRFIELD**,  
Edith Fairfield, Guardian of the person and estate of Donald Frank Fairfield, a minor.  
First pub. Oct. 13, 1949.  
Last pub. Oct. 27, 1949.

In Stock

**Sodium Chlorate**

**Kendrick Rochdale Company**  
KENDRICK, IDAHO

**Enjoy Yourself**

At The  
**ANTELOPE INN**

PLAY SHUFFLEBOARD  
SPLENDID POOL TABLE  
SANDWICHES  
SOFT DRINKS  
ICE COLD BEER  
**BOB MAGNUSON**

**TRADE IN KENDRICK -- AT HOME**

TO FAMILIES  
WE HAVE NEVER SERVED

Those who have never had occasion to engage the services of a funeral director must rely upon what others say, when the inevitable need arises. For almost fifty years Vassar & Rawls have been noted for professional skill, fair dealing, liberal policies.

This reputation is your safe guide in calling a funeral home.

**VASSAR-RAWLS FUNERAL HOME**  
Telephone 333     Lewiston, Idaho

# Potlatch Chief Sez



PUBLISHED BY THE KENDRICK CO-OPERATIVE CREAMERY

HELLO, THERE FOLKS:

**About Milk For Health:**

Now that winter seems to be well on its way (at least from reports brought in by hunters) it's time to think about your health. As you well know, the established need for milk for a growing child is not less than one quart per day, and at least a pint per day for each adult — and without a doubt more would be better in both cases.

Perhaps some of you are just a bit afraid of milk. Well, you need not be, at least of "Potlatch Chief" brand, for every drop of it is pasteurized — your assurance of pure milk — and we do not sell raw milk!

So be sure your family has all the Potlatch Chief milk — it can drink. Milk builds sturdy bodies, and sturdy bodies are the ones that resist colds and common disease. Make sure your refrigerator always contains an ample

supply of "Potlatch Chief" brand pure milk.

**Other Products:**

Yes, you bet, we market Cottage Cheese, Ice Cream, Whipping Cream, Cream, Buttermilk and Eggs under our own label — buy them with confidence at the local stores or here in the creamery.

A couple of telephone linemen were climbing a pole when the woman motorist drove by. "Look at those morons," she sniffed. "Just because I've had a couple of accidents, everybody in town is trying to be funny."

"Senator, you promised me a job."

"But there are no jobs open."

"Well, you said you'd give me one."

"Tell you what I'll do; I'll appoint a commission to investigate why there are no jobs, and you can work on that."

## Kendrick Theatre

FRIDAY, SATURDAY, OCT. 14-15

TYRONNE POWER  
GENE TIERNEY

— In —

### "That Wonderful Urge"

SHOWS BEGIN AT 7:00 P. M.

35c Admission 15c



### WHAT CAMERON FOLKS ARE DOING THESE DAYS

The Cameron Ladies Aid will hold their annual chicken dinner and sale on Thursday evening, October 20.

Mrs. A. H. Blum left Monday for Pullman to visit with her son, Gustav and family for a week. She will also visit in Spokane with her sister, Mrs. Wessel, and brother, Charley Oldag.

Mrs. Theo Meske entertained with a birthday anniversary party honoring her son Teddy, Thursday evening. Guests were schoolmates of Teddy's. The evening was spent in playing games, after which Mrs. Meske served a delicious lunch.

The Ladies Aid held an afternoon meeting Wednesday. Mrs. A. F. Wegner, Mrs. Geo. Wilken and Mrs. Henry Wendt served a lunch at the close of the afternoon.

Mr. and Mrs. Herbert Schwarz and daughter JoAnn spent Sunday evening with Mr. and Mrs. Walter Dennler on Fix ridge.

Mr. and Mrs. Albert Glenn were Lewiston business visitors on Friday.

Mr. and Mrs. Ed. Mielke and daughters and Ted Mielke visited with Mrs. A. E. Spekter and son Vern in Craigmont, Sunday.

Mr. and Mrs. C. L. Wegner of Pullman were Saturday night and Sunday guests of Mr. and Mrs. Earl Whitinger.

Mr. and Mrs. Kenneth Wilken returned Saturday from a week's honeymoon trip to the coast. They will make their home on the Wilken farm on Texas ridge.

Mrs. John Schwarz, Mrs. Ida Stoneburner, Miss Emma Hartung and Mrs. Fred Newman visited with Miss Helen Mielke Sunday afternoon.

Mr. and Mrs. John Blankenship and family were dinner guests of Mr. and Mrs. Emil Sillow Friday evening.

Mrs. Fred Newman entertained at a quilting party Thursday. Those

present were Mrs. A. H. Blum, Mrs. Wilbert Brunstiek, Mrs. Geo. Wilken, Mrs. Earl Whitinger, Mrs. Ida Stoneburner, Miss Emma Hartung, Mrs. Glen Wegner, Mrs. Walter Koopp, Miss Helen Mielke and Mrs. Ed. Mielke.

Mr. and Mrs. Henry Wendt spent Sunday afternoon with Mr. and Mrs. Geo. Wilken.

Mr. and Mrs. G. F. Cridlebaugh and daughters of Lewiston, and Mr. and Mrs. Herbert Schwarz and daughter were Friday evening guests of Mrs. Stoneburner and Miss Hartung.

**GOLDEN RULE**

Ernest Cowger had the misfortune of having a log drop on him Friday. By luck, no bones were broken, but both his legs were badly bruised.

Mrs. Nick Deamo returned to her home in Lapwai Sunday, after spending the past week with her daughter, Mrs. Oscar Lawrence and family. Oscar Lawrence and daughter Joan and Evelyn Kazda visited Albert Lawrence in the St. Joseph's hospital at Lewiston, Sunday. He is getting along as well as could be expected.

Mrs. Bruce Tarbert and children of Lewiston are visiting her mother, Mrs. Roy Martin.

Mrs. Frieda Muenz visited at the Carl Finke home the first of the week. She is now visiting at the Glen Betts home.

Albert Happler and Lewis Kazda of Pomeroy visited at the Oscar Lawrence home Friday and Saturday.

The Carl Finke family, George Finke and the Don Christensen family were Sunday dinner guests in the Glen Betts home.

Mrs. Bertha Kuykendall of California is visiting her sister, Mrs. D. V. Kuykendall and family, and other relatives. She is now visiting at the Bill Koopp home.

**NEW HEARING DEVICE HAS NO RECEIVER BUTTON IN EAR**

Spokane, Wash.—Deafened people are hailing a new device that gives them clear hearing without making them wear a receiver button in the ear. They now enjoy songs, sermons, friendly companionships and business success with no self-conscious feeling that people are looking at a receiver button hanging on their ear. With the new invisible Phantomold you may free yourself not only from deafness, but from even the appearance of deafness. Ray Farnell & Associates, 335 W. Sprague, Spokane, Wash., are so proud of Belton's achievement they will gladly send you their free brochure (in plain wrapper) and explain how you can test this amazing invisible device in the privacy of your own home without risking a penny. Write Ray Farnell today. Dept. 23-A. Paid adv.

# THEY ARE HERE

NEW QUADRIQUA PRINTS AT REDUCED PRICES

Were 49c — Now, yard **43c**

BLACK BEAR ALL WOOL FLANNEL SHIRTS  
Each **\$6.45 and \$7.45**

MALONE ALL WOOL PANTS YOU KNOW THE QUALITY!  
Pair **\$8.90 and \$10.50**

MALONE ALL WOOL COATS Remember The Name  
Each **\$9.90 and \$10.50**

BOYS' BLACK BEAR COATS Pretty Plaids, Double Back and Front  
Each **\$7.45 and \$7.90**

BOYS' 8-INCH LOGGER TYPE SHOES  
Pair **\$8.45**

MEN'S OXFORDS These Are Brand New Arrivals  
Pair **\$7.45 and \$8.90**

RUBBER FOOTWEAR Buy It Now — While We Have Your Size

## N. B. LONG & SONS

STARTING OUR 41ST YEAR IN KENDRICK  
Phone 751 Phone 751

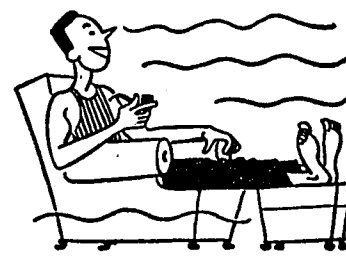
Bees must travel an average of 150,000 miles to gather a single pound of honey. The famous "Morning Mine" at Mullan, Idaho, is the deepest lead mine in the world.

**Kendrick Electric Shop**  
Wiring And Appliance Repair  
C. D. HIETT Licensed Contractor PHONE 1141

## Phone 713

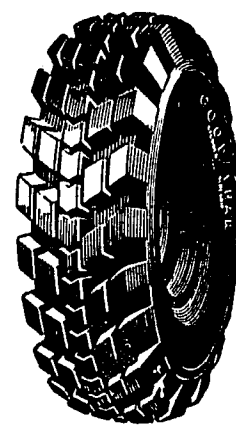
for

Heat you can't beat CHEAPER CLEANER HOTTER HEAT



You can count on Standard Stove or Furnace Oil for clean, even, economical heat.

Get Dependable  
**GOODYEAR**  
Extra-Mileage  
**RECAPPING**



Be safe . . . save tires! Let us make your old tires "like new" with long-lasting, non-skid Goodyear tread designs for thousands of extra safe miles. Costs little . . . no red tape!

**KENDRICK GARAGE CO.**  
KENDRICK, IDAHO  
E. A. DEOBALD, Propr.

## YES . . .

We're Still In Business !

Come In And Look  
Our Stock Over!

## Travis Furniture & Electric Supply Co.

M. A. TRAVIS PHONE 861

Bring Your Family For  
Fried Chicken Specialty

On  
Saturdays and Sundays

Shuffleboard For All The Family

Beer, Soft Drinks and Fountain  
Service

## The Kendrick Cafe

FORREST D. WETTEROW KENDRICK, IDAHO

## BLEWETT'S CASH GROCERY

PHONE 891 KENDRICK PHONE 891

## IN STOCK

POULTRY FEEDS

ANIMAL MASHES

MINERALS

AND SALT

CUSTOM CLEANING AND TREATING

## Lewiston Grain Growers

Day Phone 591 KENDRICK Nite Phone 462

NEW — LOW — REDUCED RATES ON FARM TRUCK AND AUTOMOBILE INSURANCE  
Give Me a Ring  
MARVIN LONG AGENCY

SHORTS FUNERAL CHAPEL  
Moscow, Idaho Phone 3001