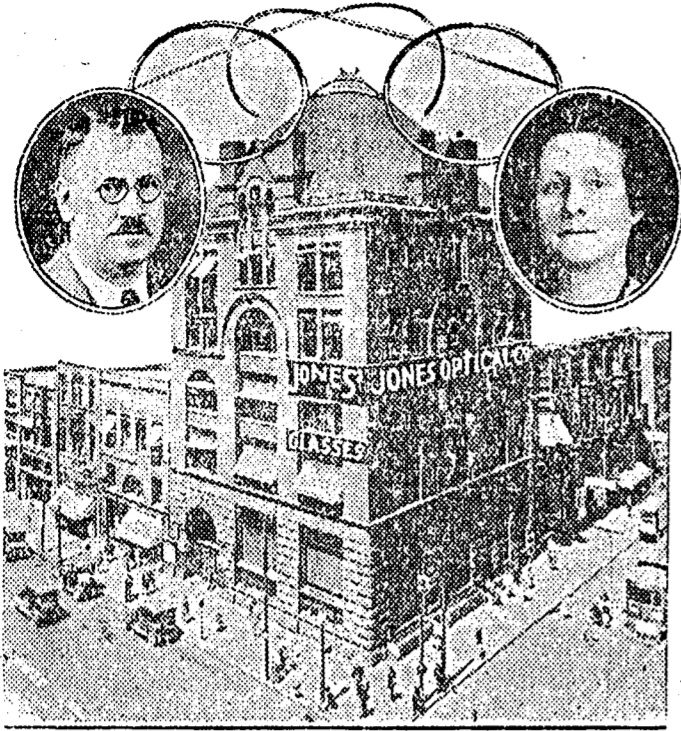






## "Jones Glasses Satisfy"



If your eyes can be made right and you neglect them—it's your fault if you do not see well. Modern scientific modern, coupled with finest materials in lenses and frames are available.

### Citizens of Kendrick

Are to have opportunity for having their eyes tested and

Glasses Scientifically Fitted

Dr. A. E. Jones, Specialist

will be at the

Commercial Hotel,

Friday, November 16th

12 years in Spokane,



## To Succeed

income must be greater than outgo, and no success can be lasting which is not built upon a growing bank account.

That's why a Checking account is ideal! It's so easy to keep track of income and outgo, to control expenses and to know just where you are at all times.

Open Your Checking Account Today!

—oo—

### Kendrick State Bank

"Your Home Bank"

KENDRICK, IDAHO

## We Fix Leaky Radiators

We have installed a complete equipment for soldering leaky radiators and can do a first class job. Don't ruin your motor by running your car with an empty radiator. It is cheaper to have your radiator sold ered.

## Buy Good Tires

Why are the majority of the motorists in the Potlatch country using Goodyear tires? Because Goodyear tires are good tires and will give you full mileage for your money.

### Kendrick Garage Company

Deobald Bros, Props

## Latah County Democratic Ticket

For State Senator  
**OSCAR BONNETT**

Mr. Bonnett's chief occupation has been farming and livestock. Consequently his view point is that of the farm. He has always taken an active interest in civic affairs and is well versed in the conduct of public affairs.

For State Representatives  
**ROBERT W. MORRIS**

For twenty-five years N. P. Agent at Moscow. He has always taken an active interest in all public affairs and knows the needs of the county.

**TIM SULLIVAN**

Mr. Sullivan has been a resident of Latah County for forty years. He has been a farmer and is now sales agent for the Ford automobile.

For County Commissioner First District  
**P. P. NOLAN**

Mr. Nolan is an old resident of Latah County and one of its prominent and successful farmers.

For County Commissioner, Second District  
**CHAS. BOWERS**

Mr. Bowers is a farmer of twenty years experience. He understands the needs of the county.

For County Commissioner, Third District  
**T. H. CHRISTIE**

Mr. Christie is a pioneer merchant of the Troy District. He has always been a leader in his community and in the county.

For Prosecuting Attorney  
**FRANK L. MOORE**

Mr. Moore has for thirty-five years been one of the leading lawyers of the county and his ability is recognized by all who know him.

For Sheriff  
**ERICK OLLER**

Mr. Oller has resided in Latah County for twenty-five years. He is a farmer and poultry raiser. He is known as a careful conscientious business man.

For Probate Judge  
**S. A. WATERS**

Mr. Waters is an educator and well qualified for the position.

For Assessor  
**J. E. WILSON**

Mr. Wilson has been a resident of Moscow for fifteen years. He operated the Moscow Creamery for twelve years. Before engaging in the creamery he was a farmer and retail lumberman. He is well acquainted with property values.

For Coroner  
**JOHN PICKERD**

Mr. Pickerd is an undertaker at Troy and his ability is well known.

## POULTRY

### HEN COMFORT IS MOST PROFITABLE

When the rough days of autumn and winter arrive, the hens begin to hunt about for comfort and protection from winter winds and snow. If the poultry house is cold, dark, and uninviting, it is very unprofitable to the owner. It not only shortens up the egg supply, but next spring the hens go to work with a handicap because they have been poorly wintered.

If we give the hens one-half the attention that we do our other stock they start making things count, says a writer in an exchange. Our poultry house is built for economy and comfort for the hens. We are strong believers in the scratching department, making the hen work a lot. To do this we have all the floor space in the building arranged for bad days, for that is when they must work inside. We put up a gunny-sack curtain in front of the perches, which serves for two purposes. It keeps the hens warm when on the perches at night, and keeps them off the perches in the daytime.

Then we partition off the inside with this cheap burlap which breaks possible drafts, and also divides the flock in their work for the day. We also open the windows, and drop down a burlap curtain on bad days to keep out cold air, storms and beating winds. This burlap is almost indispensable in our poultry equipment, and we use much of it. Our front curtain to the main building is made from it, tacked upon frames so it can be raised or lowered as needed.

On snowy, rough days the hens work happily away, more contented than if outside. It has always been our custom to set up a windbreak of cornstalks against the lee sides of the fences and the west and north of the houses, and it is wonderful how the hens will take refuge behind this fodder barrage many winter days when the snow is off.

### Coconut Economy

In the South sens-coconuts have many uses—the milk is drunk; the sap of the tree, boiled and fermented, makes palm wine; the fruit is eaten, leaves make roof thatch for huts, the splints make baskets, the coconut shells are useful dishes and the oil is used for rubbing the body.

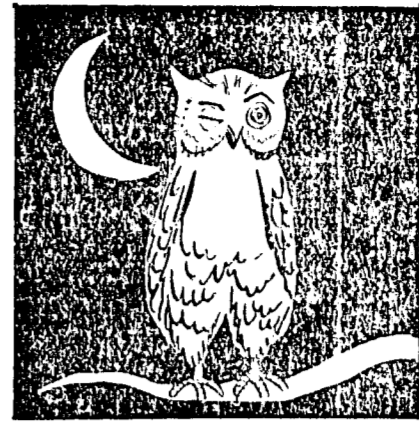
### Carp Are Veterans

It is claimed that there are carp in ponds in Europe two hundred years old. Authorities claim that a carp twenty years of age should weigh around 40 pounds to 50 pounds.

### People Are Mean

I often think the people are meaner than they need be; that the necessities of nature do not require the meanness we so generally practice. We have a lot of bad habits nature does not ask of us.—E. W. Howe's Monthly.

## Tonight & Saturday



If You Like  
Mystery,  
Comedy and  
Thrills ---  
Don't fail to see

# 13 WASHINGTON SQUARE

A Mystery Melodrama that will delight you—between shivering thrills and hearty laughs you'll enjoy this great entertainment. One moment you'll be laughing and the next you'll be on the edge of your seat with suspense!

Adults 35c, Children, under 12 years, 10c

### The New Kendrick Theatre

### Consistent Layer Will

#### Molt Late in Season

Most hens stop laying when they begin to molt. It is a fact no longer disputed that a hen, in order to make a high yearly record, must be a consistent layer. The early molting hen is not a consistent layer. She takes all the fall months as a vacation for changing her plumage. The consistent layer molts late and grows her new plumage rapidly.

The hen that under normal conditions molts early, will not lay as many winter eggs as the hen that molts late. Neither will she begin egg production earlier in the spring. No definite date can be set as to early molting. As a general rule, however, the

first hens in the flock to molt should be sold, and the last to molt should be kept for breeding purposes.

Hens may be thrown into an early molt by starving while laying heavily; by irregular feeding; by roosting in a house that is poorly ventilated; or in any way that tends suddenly to check egg production. Molt from any of these causes should be avoided, as it is likely to result in a lower total egg production. If the pullets are hatched early, they will be laying in the fall and thus the egg production kept up at all seasons.

### Confusing

There are so many smart men on both sides of everything that I confess to being greatly confused.—E. W. Howe's Monthly



Dear Customer:

The NEW THOR AGITATOR Electric Washer is the world's lowest priced quality washer. It washes a tubful sweet and clean in 5 minutes, without soaking. It has fewer parts than any washer on the market, thus no service is required.

The New Thor Agitator has a round, enamel-lined tub—no corners. Easy to clean as a china dish. It has no belts to break and cause delay, it is directly connected to the motor shaft. The drive mechanism runs in a bath of oil thus making it a lifetime washer—built to last and give more service than any other make of washer on the market. Thor washers have always held the record for long life.

A new feature of the New Thor Agitator is the Thor Rotary Iron which can be attached to the wringer shaft (simply lift off the wringer and place the ironer in its place) thus your ironing task is reduced from hours to minutes and it does a better job than the ordinary hand iron on account of the extra pressure applied.

With this combination, Thor Agitator and Thor Rotary Iron, your laundry is complete. You are prepared for a lifetime of freedom from the washing and ironing day tasks. World's-record Thor quality is your assurance of that.

During the entire month of November, you may purchase a Thor Agitator Washer at a reduced price also the Thor Rotary Iron at a reduced price. ONLY \$1.00 Down—the balance in very easy monthly payments with your light bill. Every family can afford one of these washers at our reduced price—Only \$129.50 time, \$1.00 down and \$6.00 per month. Every housewife deserves an electric washer as she can not afford to wash by hand when it can be done with a Thor at less than 10c per month.

We would like to have you try a Thor Electric Washer on your next wash day—just call our office and ask to have one sent up on approval. We will be glad to bring it and glad to have you use it.

Don't Delay — Phone Today.

THE WASHINGTON WATER POWER CO.  
Phone 452

## The Washington Water Power Co.

KENDRICK, IDAHO

November 1st, 1928

Electric Washers  
Electric Ironers



REPUBLICAN COUNTY CHAIRMAN DISCUSSES STATE AND COUNTY CANDIDATES

Vote: We are all voting for Hoover so give us the line on the state and county candidates on the republican ticket.

We are glad you mentioned state and county affairs. Heading the state ticket is Governor Baldrige, a man who has made good and has the unqualified and enthusiastic support of Senator Boral. In the 1926 campaign the progressive party put a full ticket in the field and the progressive candidates received more votes than the democratic candidates. Governor Baldrige has managed the affairs of the State of Idaho during the past two years with such honesty, fairness and economy so as to gain the support and admiration of the former leaders of the progressive party who are now working as a unit for the re-election of the entire republican state ticket.

Not a single charge has been made of extravagance or misuse of public funds during the administration of Governor Baldrige. Necessary repairs and additions have been made to the state educational, penal and charitable institutions. Even a Scotchman would approve of the repairing of the roof on the administration building of the university and the construction of the new heating plant. The gymnasium at the university which is about completed has been built without the expenditure of one dollar of the tax payer's money. The funds to build this gymnasium building have been donated, and will be donated by the loyal citizens of the State of Idaho and the students of the university.

A voucher is on file in Boise showing every item of expenditure during the past two years out of every fund in the hands of the state administration. To explain in detail in an article of this kind how money was spent would be impossible, but our political opponents have searched the records and have been unable to find a single item to criticize. It must be remembered that no money can be spent by the governor or by any state official unless the legislature makes provision for the money spent or in other words makes an appropriation of your tax money for state expenses. All the money spent during the past twenty-two months was appropriated by the last legislature and every democrat in the House and in the Senate voted and authorized the expenditure of every cent of money which has been expended.

From the standpoint of experience, ability, honesty, and economy, the nominees for the state offices on the republican ticket deserve your support.

The County Ticket

What does the record show? A county free from any debt; a county which has the deserved reputation of being managed and governed better than any county in the State of Idaho; a county which enforces all the laws with impartiality; and a county which has enforced the liquor laws through an efficient sheriff and county attorney so as to receive the praise and admiration from the federal judge in the State of Idaho in a statement made from the bench. We challenge our political opponents to show a better record for law enforcement and economy any place in the United States than Latah County presents through the services of Sheriff Summerfield and Prosecuting Attorney Goff. The fight is being made on these two candidates because laws have been enforced.

Two other candidates on the republican ticket deserve special mention for the reason that the two men who are mentioned specially have never been before the public asking for office except in the republican primaries. We want the voters to get acquainted with them.

The republican candidate for assessor, Walter Q. Taylor, is a farmer living on American Ridge. His education and business training fits him for this most important office. He proposes to equalize valuations in Latah County so that every property owner, not exempt from taxation, will pay his just proportion of the taxes. He carried his home community in the primaries by an almost unanimous vote. The voter living outside of Moscow has a chance of selecting one of their own men to fill a public office at the county seat. In the interest of fair play the Moscow voters should vote for Taylor on the recommendations of his friends and neighbors. Give the country a fair deal by distributing the offices as much as possible throughout the county. The voter will not make a mistake by voting for Taylor to assess the property in Latah County during the next two years.

Another name will appear on the republican ticket for the first time, Rudolph Nordby of Genesee, the candidate for commissioner of the first district on the republican ticket. A successful farmer and like Mr. Taylor he had the unanimous support of the citizens of his home town in the primaries. He defeated a good republican and a good officer in the primaries and deserves your support in the election.

Between you, the voter, and myself, as Chairman of a party which has always stood for the rights of man from the days of Abraham Lincoln down to and including the present issues, no good reason has been shown why I should not advise you to vote a straight republican ticket by placing an "X" at the head of the republican ticket. United, we will be victorious all along the line. Divided, we may invite disaster both morally and financially. Hoover leads the way for a good, clean, moral constitutional government. Vote to sustain Hoover if he is elected by voting for John Thomas for United States Senator from Idaho and our own beloved citizen Burton L. French for Congress. Be sure and vote. If you can not get to the polls dial 2268 for Republican Headquarters and we will arrange for transportation from your home or residence to the polls and return.

Yours for Republican Victory,  
R. C. WEST, Chairman.

Less Poisoning  
by Liberal Feed

Overgrazing of Pastures  
Forced Animals to Eat  
Inferior Plants.

(Prepared by the United States Department of Agriculture.)

Conservative grazing, which assures an abundant supply of nutritious range forage, is an important factor in reducing losses of live stock from poisonous plants, says the forest service, United States Department of Agriculture.

Cause of Losses.

At a recent meeting of the Intermountain Live Stock Sanitary association Prof. C. E. Fleming of the University of Nevada pointed out that a great many of the death losses from eating poisonous plants were the result of overgrazing and depletion of the better forage plants, which forced the live stock to eat plants of inferior value—including those that are poisonous—in sufficient quantity to prove fatal. Doctor Murray of Salt Lake City also stated that in his opinion many losses on the winter range were due to malnutrition as a result of live stock having to subsist mainly on inferior range plants and having an inadequate forage supply.

Reduce Losses.

In the drought region of southern Arizona it is extremely important,

the forest service has found, to graze the range conservatively, since short rainfall may result in the production of a feed supply materially smaller than usual. It was found that by utilizing approximately 80 per cent of the growth of the important palatable plants in the average year and by reserving a part of the grama range, on which the vegetation cures well on the stalk and is excellent winter feed, losses could be reduced from the average for that region of about 10 per cent to about 2 to 3 per cent of the animals grazed. Not only is there a direct saving to the live-stock producer from fewer death losses, but the better condition of animals results in a greater production of young and better development with a more satisfactory price. Thus, profits have been made from cattle during the recent trying years where conservative grazing has been practiced, although net losses were shown by those outfits in the region which utilized their range forage too closely.

Get Seed Wheat Free of  
Objectionable Weeds

Many wheat growers in the Corn Belt, because of the extensive winter killing that occurred in this area last season, will be faced with the necessity this year of providing themselves with seed wheat. Seed may often be obtained from neighboring farmers, but it may sometimes be necessary, or it may appear advisable, to bring in seed from greater distances. In any case, says the United States Department of Agriculture, the farmer should assure himself that the wheat seed he buys is free from weed seeds. Garlic, cockle, and cheat or chess are especially objectionable and unfortunately are widely prevalent in many wheat-growing areas. When once introduced on a farm they are difficult to eradicate, and grain containing such weed seeds is discounted on the market. A little care in preventing the introduction of noxious weeds in seed wheat may save a lot of trouble.

Reminder of Dark Age

Witch-burning days in Scotland were recalled when a human skull was found during excavations at the Bogle hole, Mullsburgh. The Bogle hole was one of the places in Scotland where witches were burned after trial. It was known in 1561 as the Terror's Croft. The last recorded trial of persons accused of witchcraft was held in Musselburgh on July 29, 1661.

Steam Mined, Put to Work

The dream of Jules Verne, that a fictitious civilization might one day seek its heat and energy from a volcano, finds a modern counterpart in central Italy where electrical energy is being generated commercially by natural steam from the interior of the earth.

WATCH FOR OUR  
SPECIALS

—Each Week—

Kendrick Barber Shop

Friday, Nov. 2 and 9

Marcell and Facial for

Only \$1.50

Make your appointments  
with Silvie Cook.

GENERAL REPAIR SHOP

Blacksmithing, Wood Work,  
Tire Setting, Wagon or  
Autoes, Disc Sharpening,  
Machine and Gun Repairing.

FRANK CROCKER

CITY DYE WORKS

Cleaning - Pressing - Dyeing  
All kinds or repair work.

122 New 6th St. Lewiston, Ida

C. A. OPPENBORN

Attorney-at-Law  
General Practice  
Kendrick, Idaho

N. R. Shepherd

The Auctioneer

Wants to Cry Your Sale

Shep pays phone calls

Troy, Idaho

J. J. PICKERD

Licensed Embalmer and  
Undertaker

During bad weather we will  
furnish horse drawn hearses.

Auto Equipment, Lady Attendant,  
Stock of goods in Kendrick.  
Phone 462a Kendrick or  
6R Troy, or see  
G. F. Walker

How About  
Those Side  
Curtains?

Is the celluloid good?  
Better have them fixed  
up for winter driving.

Shoe Repairing, Harness  
and Saddlery.

N. E. Walker

Kendrick Idaho

New  
models and  
THE OPEN MIND

THE public, with its healthy desire for the new and the better, insists upon continuous improvement, and will withdraw its patronage from any product or service which stands still.

Nowhere is this more true than in the automobile industry. The car is more than a utility. It is a *personal* thing, involving your convenience, your comfort, your safety, your sense of beauty and color, your pride of ownership, your complete environment for many hours of your life. Customs and habits of living change fast; and the past holds many warnings of how quickly your favor can shift when an automobile, for even a single year, fails to show progress.

So continuous improvement is more than a policy with General Motors. It is a vital necessity.

THE PUBLIC DEMANDS NEW MODELS

And the public is right. Out of that demand have come electric starting and lighting, the closed body, Duco finish, four-wheel brakes and hundreds of refinements, big and little. Improvements that might have taken a generation have been born within a few years because people want greater performance, beauty and comfort.

Equipped with the largest research laboratories, proving ground and body building plants, and guided by an Open Mind which is ready to revise its thinking in response to new facts, General Motors believes that it is peculiarly fitted not only to sense but to anticipate public demand and to give the people better automobiles at better values year after year.

As evidence of that faith we presented some months ago the New Chevrolet, the New Pontiac, the New Oldsmobile. And now we offer, with equal pride, the New Buick, the New Cadillac, the New LaSalle and the New Oakland.

CHEVROLET. 7 Bigger and Better models, \$495 to \$715. 4-wheel brakes. More powerful engine. Luxurious Fisher Bodies. New colors. Also Light Delivery Truck chassis; \$375; Utility Truck chassis with 4 speeds forward; \$520.



PONTIAC. 7 models, \$745 to \$875. Lowest priced General Motors Six—now offers more power, greater economy—more speed, greater acceleration. Arresting beauty of bodies by Fisher expresses the vogue of the hour.



OLDSMOBILE. 7 models, \$925 to \$1085. Also 5 DeLux models, \$1145 to \$1235. "The fine Car at Low Price." Completely redesigned and improved by General Motors. More powerful, 4-wheel brakes. Longer, roomier Fisher Bodies.



OAKLAND. 7 models of the new All American Six, recently announced, \$1145 to \$1375. Distinctively new original appearance. Solid performance. Luxurious appointments, in new bodies by Fisher. A car you'll be proud to own.



BUICK. 18 Silver Anniversary models on 3 wheel-bases. \$1195 to \$2145. Lightning flash getaway. Masterpiece Bodies by Fisher. Comfort and luxury in every mile. Power for the steepest hill and the longest run.



LASALLE. 13 new models, \$2295 to \$2875. Attractive car of Continental lines. Companion car to Cadillac. 90 degree V-type 8-cylinder engine. Beautiful Bodies by Fisher. Striking Duco color combinations.



CADILLAC. 26 models, \$3295 to \$7000. Standard of the world. Famous 90 degree V-type 8 cylinder engine. Luxurious Bodies by Fisher and Fleetwood. An extensive range of color and upholstery combinations.

(ALL PRICES F. O. B. FACTORIES)

GENERAL  
MOTORS

CLIP THE COUPON

GENERAL MOTORS (Dept. A), Detroit, Mich.

- CHEVROLET Please send, without obligation to me, illustrated literature describing each General Motors product I have checked—together with your booklets "The Proving Ground" and "Principles & Policies"
- PONTIAC
- OLDSMOBILE
- OAKLAND Name.....
- BUICK Address.....
- LASALLE
- CADILLAC
- FRIGIDAIRE Automatic Refrigerator
- DELCO-LIGHT Electric Plants and Water Systems

The Washington  
Water Power Co.

Dedicated to the service of 52,000 accounts in  
100 towns and communities

# LOANS

We have plenty of money to loan  
on farm property

## 5 Per Cent

5 Years 10 Years

**Geo. Thiessen - Hugh Helpman**  
631 Main St. Phone 1092  
LEWISTON, IDAHO

### MAIN STREET GARAGE

Automobile Repairing by  
Experienced Mechanic  
Automobile Accessories  
Badger Tires and Tubes  
Reo Cars and Trucks  
Shell Gas and Oils  
**Paul Schulze, Prop.**

#### DOCTOR TRUITT

Day and Night Calls  
Attended Promptly  
Southwick, Idaho.

### DRAYING

We move anything that's  
Loose.  
Residence Phone 654

**KENDRICK DRAY & ICE**  
Frank Boyd, Prop.

#### BROWER-WANN CO.

Funeral Directors  
1434 Main, Lewiston, Ida  
Our aim is to perfect ways  
and means of bringing you  
comfort and privacy and  
above all Specialized Ser-  
vice.  
Lewiston Phone 275  
or  
**Kendrick Hardware Co.**  
Kendrick, Idaho

#### Dr. GEO. W. McKEEVER

Dental Surgeon  
Phones: Office 812, Res. 1915  
Kendrick, Idaho

#### A. H. OVERSMITH

Attorney-at-Law  
Urquhart Bldg., - 3rd St.  
Moscow, Idaho

#### OLIVER J. MOREHEAD, M. D.

Physician and Surgeon  
Phone 832  
Kendrick, Idaho

#### A. H. BLUM

Blacksmithing and all  
kinds of Machine Work.  
Saw Gunning  
Cameron, Idaho

### WANTED

Cattle, Hogs and Sheep,  
Hides and Wool.  
Poultry  
Call  
**B. N. EMMETT & CO.**

### SUMMONS

In the District Court of the  
Second Judicial District of the  
State of Idaho, in and for the  
County of Latah.

W. T. Vickrey, Plaintiff,  
vs.

Frances Vickrey, Defendant.

The State of Idaho send greet-  
ings to the above named defend-  
ant:

You are hereby notified that a  
complaint has been filed against  
you in the district court of the  
second judicial district of the  
State of Idaho in and for the  
county of Latah by the above  
named plaintiff, and you are  
hereby directed to appear and  
plead to the said complaint with-  
in 20 days of the service of this  
summons; and you are further  
notified that unless you so ap-  
pear and plead to said complaint  
within the time herein specified,  
the plaintiff will take judgement  
against you as prayed in said  
complaint.

The general nature and terms  
of plaintiff's cause of action is  
to procure a divorce on the part  
of the plaintiff from the defend-  
ant on the grounds of desertion.

Witness My Hand and the seal  
of said district court, this 10th  
day of October, 1928.

(Seal of Court Affixed)

**HARRY A. THATCHER**, Clerk,  
By **Adrian Nelson**, Deputy Clerk.  
**A. H. Oversmith**, Attorney for  
Plaintiff, Residence and Post-  
office Address, Moscow, Idaho. 41-5t

### Rupture Shield Expert Coming

To MOSCOW, IDAHO, on

FRIDAY and SATURDAY

November 9th and 10th

at the Moscow Hotel

from 10 a. m. to 4 p. m.

Evenings by Appointment

TWO DAYS ONLY

No Charge for Consultation

The successful expert C. F. Red-  
lich for Scientific Rupture Appliances  
says:

The "Perfection Retention Shields,"  
hold the rupture perfectly, no matter  
what position the body assumes or  
how heavy a weight you lift. They  
give instant relief, contract the opening  
in a remarkably short time and  
strengthen the weak tissues (the real  
cause of rupture) so that they fre-  
quently recover their previous nat-  
ural retaining power, needing no fur-  
ther outside support. Stomach trou-  
ble, backache, and constipation often  
caused by Rupture promptly disap-  
pear.

Truly remarkable results have been  
obtained with recent and not yet  
fully developed ruptures and many  
old ones also.

Surgical Corsets and Abdominal  
Supporters for falling organs, obe-  
sity, navel and stomach-ruptures ex-  
pactly made to measure.

Letters from highly satisfied clients  
available.  
Advertised mail order contraptions  
as well as elastic belts with chafing,  
filthy legstraps are absolutely worth-  
less.

Call on me and I will show you.  
Results on children are 95 per cent  
favorable.

Business engagements prevent vis-  
iting any other city in this section.  
C. F. Redlich, Rupture Appliance  
Expert, Home office, 535 Boston  
Block, Minneapolis, Minn. Adv.

### Need Change of Pasture

We are apt to grow stale and thin  
mentally if kept too long in the same  
pasture. So... (Small)... (Small)

### Rock Purifies Fish Bowl

Water in the goldfish bowl will re-  
main fresh and healthful for three  
months or so by placing a chunk of  
special chemical rock at the bottom,  
says Popular Mechanics Magazine.  
About half a pound to a gallon of  
water, is the proper proportion.

### Dr. Salsberg & Simmons

Eye-Sight Specialists  
512 Main Street  
Lewiston, Idaho

Dr. Simmons will be in  
Kendrick every 60 days.

### McDowell's Midget Cafe

Meals Lunches  
Coffee  
Draught Beer  
Any time of the day.

Coming to Moscow  
**DR. MELLENTHIN & CO.**  
Specialists  
in Internal Medicine for the past  
fifteen years.  
**Do Not Operate**  
will be at the  
Moscow Hotel, Thursday, Nov. 8  
Office Hours 10 a. m. to 4 p. m.  
**One Day Only**  
No Charge for Consultation

The specialist of Dr. Mellenthin  
& Co. is a regular graduate in  
medicine and surgery and is  
licensed by the state of Idaho.  
He visits professionally the  
more important towns and cities  
and offers to all who call on this  
trip free consultation, except the  
expense of treatment when de-  
sired.

According to his method of  
treatment he does not operate  
for chronic appendicitis, gall  
stones, ulcers of stomach, tonsils  
or adenoids.

He has to his credit wonderful  
results in diseases of the stomach,  
liver, bowels, blood, skin, nerves,  
heart, kidney, bladder, bed wet-  
ting, catarrah, weak lungs, leg  
ulcers, rheumatism, sciatica, and  
rectal ailments.

If you have been ailing for any  
length of time and do not get  
any better, do not fail to call, as  
improper measures rather than  
disease are very often the cause  
of your long standing trouble.

Remember above date, that  
consultation on this trip will be  
free and that his treatment is  
different.

Married women must be ac-  
companied by their husbands.  
Address: 224 Bradbury Bldg.,  
Los Angeles, California. 42-3p

#### Hottest Part of Day

Is the hottest part of the day the  
time when the sun is vertically over-  
head? The strongest rays of the sun  
occur when the sun is vertically over-  
head or most nearly so, which is at  
noon, but the hottest part of the day  
occurs about 2 p. m. because of the  
accumulation of heat due to solar ra-  
diation throughout the morning hours.  
—New York Telegram

#### Old Expression

"Once in a blue moon" was first  
used by Roy and Barlow in "Rede Me  
and be not Rothe" in England in  
1528. It was formerly used to de-  
signate something that will never hap-  
pen. E. C. Brewer in his book "Phrase  
and Fable," says: "On December 10,  
1833, we had a blue moon. The win-  
ter was unusually mild." The expres-  
sion is now used to mean very seldom.

"A Bird in The Hand is  
Worth Two in The  
Bush"

"A Dollar in The Bank is Worth  
Two in The Pocket"

ISN'T THAT TRUE? EVERYONE KNOWS THAT  
MONEY WHICH YOU CARRY ABOUT SEEMS TO  
MELT AWAY.

CUT DOWN EXPENSES AND WATCH YOUR  
MONEY GROW IN THE BANK.

BEGIN WITH ANY AMOUNT OF MONEY, LARGE  
OR SMALL, BUT BEGIN WITH

## The FARMERS BANK

"A Strong Bank  
KENDRICK, IDAHO"

A. E. Clarke, President.  
N. S. Vollmer-Hopkins,  
Vice-President.  
W. J. Carroll, Cashier.  
F. K. Dammarell,  
Assistant Cashier.

#### Two Distinct Meanings

Mosaic, spelled with a capital, means  
pertaining to Moses, to the law, insti-  
tutions, etc. Mosaic, spelt with a  
small letter, denotes an inlaid design  
of small particles of glass, stone, etc.,  
of various colors.

#### More or Less True

The reason father and the children  
are never worried by a storm in the  
night is because it's mother's job to  
wake up and rush around closing  
windows.—(Inchnati Enquirer.

#### Waxed Paper Flowers

Any one wishing to wax a few paper  
flowers may melt a little wax and hold  
flowers over the pan and put on with  
a spoon; it is not necessary to melt  
so much wax as when plunging the  
whole flower into the liquid.

#### Merely Fanciful Name

One editor of "Twelfth Night" says  
that the name of Shakespeare's play  
has no obvious connection with the  
story. Probably it is merely intended  
to convey that the comedy was suited  
for production on Twelfth night, a  
feast set apart for mirth.

# Sensational Values

## From Nov. 2 to 10

### SUGAR

Best Caneberry sugar, 100 lbs. \$6.58

#### Farina

Small pkg. Sperry Farina ..... 19c

#### Corn Meal

Pkg. Sperry White Corn Meal ..... 15c  
Pkg. Sperry Yellow Corn Meal ..... 15c

#### Quick Oats

Small pkg. Sperry Quick Oats ..... 15c  
Large pkg. Sperry Quick Oats ..... 33c  
9lb Sack Sperry Quick Oats ..... 58c

#### Wheat Flakes

Large pkg. Sperry Wheat Flakes .... 33c

#### Rolled Oats

9lb Sack Sperry Cream Oats ..... 55c

#### Pancake Flour

Small pkg. Sperry Pancake Flour .... 15c  
Large pkg. Sperry Pancake Flour .... 32c

#### Corn

Uncle William Sweet Corn, No. 1 can  
for ..... 10c

LaGranda Sweet Corn, No. 2 can at  
3 for ..... 43c

#### Peas

Uncle William Telephone Peas, No. 1 can  
2 for ..... 25c

#### Beans

Uncle William Green Beans, No. 1 can  
2 for ..... 25c

#### Raisins

4 pkgs. New Crop, seedless ..... 33c

#### Gem Nut

2 pounds for ..... 45c

Fish, Lettuce, Cabbage, Green Peppers, Celery, Sweet Potatoes, Grapes,  
Bananas, Oranges and Lemons, always on hand at special low prices.

## Morgan's Grocery Market

Phone 582, Kendrick, Idaho

# Specials Specials

That You Cannot Afford to Pass Up

\*\*\*\*\*  
**Wool and Cotton Underwear**  
 Men's wool and cotton underwear, a real special at ..... \$2.58  
 \*\*\*\*\*

\*\*\*\*\*  
**FLANNEL SHIRTS**  
 Men's flannel shirts, just a few left at a special price of ..... 98c  
 \*\*\*\*\*

\*\*\*\*\*  
**MEN'S WORK TROUSERS**  
 Made by Oshkosh which means wear, Special ..... \$1.89  
 \*\*\*\*\*

\*\*\*\*\*  
**OVERCOATS**  
 A real snappy coat and a special \$12.95  
 \*\*\*\*\*

\*\*\*\*\*  
**Boys' sweaters made by Bradley, your choice for HALF PRICE**  
 \*\*\*\*\*

## BLANKET SPECIALS

\*\*\*\*\*  
 Wool nap, large size 66x80, just a few left **\$3.69**  
 \*\*\*\*\*

\*\*\*\*\*  
**SILK AND WOOL HOSE**  
 Ladies silk and wool hose, many shades to choose from ..... 89c  
 \*\*\*\*\*

\*\*\*\*\*  
**WOOL BLAZERS**  
 Ladies all wool snappy design blazers, going at Half Price. Save now.  
 \*\*\*\*\*

\*\*\*\*\*  
**RUBBER APRONS**  
 Ladies plain color rubber aprons, extra special at ..... 40c  
 \*\*\*\*\*

\*\*\*\*\*  
**GROCERY SPECIALS**  
 1lb can George Washington tobacco 63c  
 Laundry soap, 6 large bars for ..... 58s  
 Airy Fairy cake flour ..... 39c  
 Tasty cookies, 2lb package ..... 49c  
 A real coffee at per pound ..... 37c  
 \*\*\*\*\*

\*\*\*\*\*  
**TABLE DAMASK**  
 Areal special at, per yard ..... 69c  
 \*\*\*\*\*

**KENDRICK STORE CO.**  
 "The Quality Store"

# Preserve The Business Efficiency which it has taken eight years to build

In 1920 there were five million men in the United States out of work... Agriculture and all other industries were in distress. A deflation policy was inaugurated in the spring of 1920 by the Democratic administration, which cost the farmers of this country from seventeen to eighteen billions of dollars. Senator Borah says: "No more wicked and cruel scheme could be conceived by the ingenuity of the human mind than by this deflation and free trade." The people of the United States, in their distress, turned to the Republican party to re-establish prosperity.

Within a little more than a month after the convening of Congress in special session, the Republicans passed the farmers' emergency tariff act, which immediately commenced the rehabilitation period of prosperity. The Republican Congress has continued to pass legislation in the interests of the people, particularly those engaged in agriculture.

Maintain Idaho's Strength in Congress and

# The Power of The West

The Republican party has given the West a great power in National councils. Chairmanships of the most important committees of the Senate are in the hands of the West. Senator Borah is chairman of the most powerful Senate committee, foreign affairs; Senator Smoot, of finance; Senator Jones, of commerce; Senator McNary, of irrigation; Senator Oddie, of mines; Senator Warren, of appropriations; Senator Capper, of District of Columbia; Senator Johnson, of immigration; Senator Frazier, of Indian affairs; Senator Phipps, of irrigation and reclamation; Senator Shortridge, of privileges and elections; Senator Nye, of public lands and surveys; Senator Curtis, of rules. Congressman French is on the great appropriations committee of the House; Congressman Smith is chairman of the committee on irrigation and reclamation.

A Westerner, Herbert Hoover, is the party's candidate for the Presidency... Another Westerner, Senator Charles Curtis, is the party's candidate for the Vice-Presidency.

Shall we permit the Democratic party to oust the West from this position of importance and power? If you do not want to forfeit Idaho's position of power and command in Congress of the United States, then you must vote for Senator Thomas, and Congressman French and Smith.

## Chaos Restored to Order

When the Democratic party turned the administration of the government of Idaho over to the Republican party ten years ago, the efficiency of every department of state government had been impaired and all of our institutions were in a deplorable condition... In the state, as in the nation, the Republican party commenced on a definite constructive program for the development of Idaho's resources. During the past ten years, under Republican leadership, there has been built up a perfectly functioning business organization that is a credit to Idaho. This business organization of the state, by virtue of ability, experience and training, is prepared to accomplish even greater things for Idaho than it has in the past.

## The Old Grey Mare is Dead

The Democratic candidate for Governor is making a campaign against the Republican road building program... Evidently he wants to return to the Democratic administration of ten years ago when the old gray mare was here to pull us out of the mud and roads were mere cow trails... The Republican party has built practically every mile of state highway in Idaho and we are not through building roads until we have established market roads in every section of Idaho... The Republican party went into power ten years ago. During that period, there has been constructed and maintained 2846 miles of state highway in the State of Idaho. The Republican platform says: "We pledge ourselves to a continuation of this policy by adequately maintaining arterial highways already constructed and by their gradual completion and improvement within the limits of available funds but without undue burden upon the people."

"We pledge ourselves to extend the present highway system to include the more important tributary roads, in order to reduce the marketing cost of farm and other products, giving due consideration to the necessities of the various communities, the density of traffic and the benefits derived."

- IF YOU WANT the prosperity that is Idaho's to continue—
- IF YOU WANT the State of Idaho to progress with the other states in the Union—
- IF YOU WANT an effective businesslike administration that will get results—
- IF YOU WANT a road building program in keeping with the needs and demands of a progressive people—
- IF YOU WANT a safe, sane and economical business administration—

then— re-elect the men who have so faithfully served this state and nation, that they may continue the business efficiency which it has taken eight years to build, and that there will be no division of responsibility in government.

**Vote a Straight Republican Ticket**  
 REPUBLICAN STATE CENTRAL COMMITTEE

### LOCAL NEWS

Mr. and Mrs. Lou Westacott of Lewiston spent Sunday at the Ramey home.

J. E. Wilson and Oscar Bonnett of Moscow were Kendrick visitors Tuesday. Mr. Wilson is a candidate for assessor and Mr. Bonnett for state senator, both on the democratic ticket of Latah county.

Mr. and Mrs. John F. Waide and two sons of Deary spent last Sunday in Kendrick with relatives.

Mr. and Mrs. Jack Barnes and son spent Sunday in Genesee, at the home of Mr. and Mrs. Leon Follett. The Folletts will leave soon to spend the winter in California.

Wayne Candler was an Orofino visitor the first of the week.

Mr. and Mrs. E. W. Lutz, Eleanor and Phil spent Sunday afternoon in Kendrick at the Knepper home.

Eldie Hunt and Cleve McPhee of Linden, while returning from Wenatchee the first of the week had a collision with a Dodge car. Mr. Hunt had his collar bone broken and the car was completely demolished. The Dodge car was coming in from a side road when the collision took place.

Miss Ada Gregory of Juliaetta, a senior at the University of Idaho last year, is one of 188 students who made high or highest scholastic honors during the two semesters.

Sheriff Charlie Summerfield of Moscow was in Kendrick the first of the week delivering election supplies.

Mr. and Mrs. E. A. DeBald and family drove to Lewiston and return Wednesday afternoon.

Attorney and Mrs. Oppenborn and little son were Lewiston visitors last Sunday afternoon.

Mr. and Mrs. Frederick Lee of Seattle and the Misses Mary and Louise Leslie of Spokane spent the week end with their aunt, Mrs. H. P. Hull.

R. A. Jones and Earl Gibson, service manager and service man of the Hofus-Ferris Equipment Co. of Spokane, were transacting business in Kendrick Wednesday.

The ladies aid of the Presbyterian church will meet at the home of Mrs. R. H. Ramey this afternoon at 2:30.

Miss Mary Frances Dawson of Pullman is visiting at the home of Mrs. H. B. Thompson this week.

Mr. and Mrs. Cecil Chamberlain have moved to the George Eldringhoff place on Bear creek, which they have rented and will farm.

Wayne Herres of Lewiston was a Kendrick visitor yesterday.

At a meeting of the local band held last Monday evening, A. K. Carlson was elected leader in the place of Walter Thomas who will leave soon for Lewiston. The band is in fine shape and should develop into a splendid musical organization.

The Methodist church is being given a coat of paint this week. Ernest Clem is doing the work with a paint gun driven by a gasoline engine.

John Dammarell was a Lewiston visitor the first of the week.

The open season on Chinese and Hungarian pheasants opened yesterday and many local hunters and others from outside districts were in the field. The day was ideal for hunting and many returned with the limit of birds.

G. P. Anderson and a party of friends from Potlatch spent yesterday in the Kendrick vicinity hunting pheasants.

Mr. and Mrs. Abe Goff of Moscow were Kendrick visitors yesterday. Mr. Goff is prosecuting attorney of Latah county.

#### School Entertainment a Success

The entertainment put on at the New Kendrick theatre by the fifth, sixth, seventh and eighth grades, Wednesday evening, was a great success in every way. Practically every seat in the house was taken. The proceeds from this entertainment will be used for the purchase of playground equipment. The entertainment was given

under the direction of the Misses Mary and Nannie Weaver, who have charge of these four grades.

The stage settings and costumes required a great deal of painstaking effort, but the result was well worth while. Everyone was more than pleased with the entertainment.

The Kendrick band furnished several numbers which were very good and duly appreciated by the audience.

#### Young Folks Entertained

Margaret McDowell entertained a number of her friends at a Halloween party at her home Wednesday evening. A very pleasant evening was spent by the young folks. Games were played after which dainty refreshments were served. Those present were Eleanor Herres, Neva Ware, Marjorie Davidson, Mable Taber, May Freytag, Margaret McDowell, Claud Woody, Art Foster, Don Brocke, Elbert Long, Carl and Charles Davis.

**Cameron Ladies Aid Auction**  
 Surprises in handwork, to the highest bidder. Also dinner 35c and 15c, Wednesday, Nov. 7. Dinner 5 to 7 p.m. at Cameron, Idaho 44-1p

#### Election Day Dinner

If you wish to partake of a first class dinner at the price of an ordinary sandwich lunch, come to the Commercial Hotel on Tuesday, Nov. 6. Dinner from 11:30 until all are served. Adults 40c and children under twelve years 25c.

M. E. Ladies Aid.

#### Vote For

**JOHN CONE**

Candidate for the office of

County Commissioner

Third District

Latah County

General Election