

Storm Sweeps Eastern Coast

Many Killed And Much Property Destroyed

Troy, Ala., Oct. 25.—Sixteen persons were reported killed and more than a score injured by a tornado, which struck Pike county, Alabama, early today. Many homes were laid waste, causing thousands of dollars damage.

Relief measures were undertaken this afternoon and relief trains were rushed to several communities which bore the brunt of the terrific storm. Victims who fled here were sheltered by citizens of Troy and the local hospital was taxed to capacity in taking care of the injured.

After sweeping through this section, the tornado rushed on its way southwestward.

In the Good Hope section, seven miles west of Troy, four members of one family were killed, and two others probably fatally injured.

Five negroes were killed near here and six near Union Springs.

Persons near the path of the storm were aroused by the terrific wind and the cries of the injured, and worked in a heavy downpour of rain and vivid flashes of lightning for hours rendering aid and searching for the missing. The dead and injured were scattered along the roads, in the fields, and near the demolished homes.

An emergency call was sent to Troy for aid and many of the injured were brought to the Masonic hospital.

According to reports reaching Troy, much damage was done at Brantley, Glenwood and Goshen, but no loss of life was reported from either place.

The tornado followed intense heat and threatening weather last night and was followed by a severe electrical storm.

Davenport Bank Closes

The Davenport National bank was closed last Friday by order of the directors and W. H. Baldridge, national bank examiner, is in charge.

At the last call of the comptroller of the currency the bank showed deposits of \$262,802.11 and total assets of \$770,119. The bank has been in charge of E. N. Imus, vice president, and King M. Pernigan, cashier.

The Lincoln County State bank of Davenport received a shipment of \$60,000 in currency in case there should be any special demand from depositors, but the bank reports that there is no such unusual demand and that instead its deposits are increasing.

Milwaukee Engine Largest

When the Pioneer limited train on the Chicago, Milwaukee & St. Paul railway pulled out of Chicago last Friday night, it was hauled by the largest two-cylinder locomotive ever built in this country. The engine weighs 385,000 pounds, is 95 feet long and 15 feet high, it is capable of starting and hauling 150 loaded 32-ton freight cars, a train nearly a mile and a half long. Notwithstanding its size, it burns one-third less coal than any other engine. The locomotive was built for freight service and is being limbered up in passenger work.

Nezperce Pool Hall Robbed

Nezperce, Oct. 25.—Some time during the early hours this morning burglars entered the pool room conducted here by Harry Smith, stealing about \$5 from the cash drawer and removing two watches from the punch board in the place. Entrance was gained through a back window. No clew to those responsible had been found up to a late hour this evening.

Convicted of Murder

After a deliberation of some 52 hours, the jury, on the case of Ellsworth Kelly and James Willos, convicts on trial for their lives for participation in the prison break at Salem, Oregon, on August 12 which resulted in the death of John Sweeney and J. M. Holman, prison guards, returned a verdict of "Guilty as charged". Sentence will be passed upon the condemned men by Judge Percy B. Kelley, at 9 o'clock this morning. The verdicts carries the death penalty. Tom Murray, the leader of the trio was sentenced a week ago to hang on December 18.

Ernest Bohman's Body Recovered

Gave Life Trying Save His Starving Companion

The body of Ernest Bohman, son of Mr. and Mrs. Ole Bohman of Troy, was found near the mouth of Tisuk creek in Alaska where he was drowned last month, was the news received by his father last Friday. The body is expected to arrive in Troy, Sunday.

Young Bohman gave his life while trying to cross the small Tisuk creek off the Bering sea in Alaska while on his way to secure help for his starving companions, who had been shipwrecked when returning from the Diomedes islands, just off the Siberian coast. On this island there is a Lutheran school to which the party was taking supplies and educational matter.

There were seven men in the party headed by M. F. Hoijer. They purchased a boat, the Ariel, a small sea going vessel, leaving Bremerton in June. They made their destination and were on the way home when the ship encountered a storm and was wrecked. The boat was kept together and finally drifted 14 miles to shore, where the party made land in safety. After days of hunger, Bohman volunteered to make the hundred-mile trek south to Nome, through an unmarked frozen wasteland for help. The report from Nome is that he left on his journey on September 26, and nothing was seen or heard from him until his body was recovered last Friday.

Besides his parents the young man is survived by three brothers Clinton, Byron and Willis and two sisters, Violet and Vivian.

He took high school work in North Park college, Chicago, and later entered Stanford university, where he did two years of general work with a medical career in mind. In 1924-25 he was a student at the University of Idaho and would have graduated this year.

Daubenberg's Entertain

Mr. and Mrs. A. H. Daubenberg entertained a number of their friends at a bridge party last Saturday evening. The rooms were attractively decorated with autumn leaves and Hallowe'en novelties. After several hours spent at bridge the high honors were captured by Mrs. O. E. MacPherson and Mr. R. H. Ramey. Dainty refreshments were served at a late hour. Those present were: Mesdames and Messrs. Newton, Ed. Long, Strauch, Ramey, MacPherson and Mrs. and Miss Seeley.

Cavendish School Closed

On account of a rather serious epidemic of scarlet fever in the Cavendish community, Dr. J. M. Fairly, county health officer of Clearwater county, closed the school there last week. Miss Elvive Pittwood, teacher, and several pupils have contracted the disease. It is expected that the school will remain closed for several weeks.

Three Survivors of the S-51



The only survivors of the sinking of the submarine S-51, photographed at the Chelsea Naval hospital. Left to right: D. G. Kile, M. S. Lira and A. Gelev.

New Highway Election Laws

All District Hold Election on First Monday in December

In compliance with a law passed by the last legislature of Idaho, elections will be held on the first Monday in December in all the highway districts of the state. The law provides that at their meeting next preceding such election the board of highway commissioners shall divide the district into three subdivisions as nearly equal in population, area and mileage as is practicable, to be known as highway commissioner subdistricts Nos. 1, 2 and 3.

At the election on the first Monday of December in 1925 commissioners from subdistricts 1 and 2 shall be elected for a term of four years and from No. 3 for a term of two years. Thereafter an election shall be held every two years, the terms of the commissioners being for four years.

The voters of the entire district vote for all the commissioner candidates, but each commissioner must be a resident of the subdistrict from which he is chosen. This prevents any one section of a highway district from getting control of the board because of its larger population, which very often occurs. The new law is a good one all the way through. It insures each part of a district a voice in handling highway affairs and also makes the board a perpetual body by providing for at least one hold-over member after each election.

Halloween Party

Mesdames Ramey, MacPherson and Thomas were joint hostesses at a delightful Hallowe'en party last evening at the Harold Thomas home. The rooms were tastefully decorated with autumn leaves and Hallowe'en decorations. The guests arrived representing ghosts and were received by one of the hostesses who was dressed as a black cat, and were escorted into a room decorated as a witches cavern. A short and appropriate program was given after which the balance of the evening was spent at bridge. Dainty refreshments were served.

HE CRAVED SPEED

A Colored Bootlegger (three jumps ahead of the officers)—"Gimme a ticket on the speediest train what runs, I crave distance and neednut mind where to." Ticket Agent—"But the fast train has just gone." C. B.—"Ne' mind. Jest show me de tract what it lef' on."

Award Road Contract

Orofino.—Ryberg & McHugh, of Boise, were awarded the contract Saturday for building 3.2 miles of highway from Orofino toward Gilbert, this being a part of the grade out of Orofino to the Nez Perce prairie. The successful bid is for \$27,942.87 and is nearly \$2,000 below the nearest competitor. The project is financed by Clearwater county and the contractors will be required to complete the work next year. Ryberg & McHugh are now engaged in building the state highway between Orofino and Ahsahka and it is expected the construction on the new project will be rushed.

Robbers Bovill Store Caught

Arrest at Pleasant Valley by Sheriff Summerfield

Five men, alleged to have burglarized the John Groh & company store at Bovill October 19, were arrested at Pleasant Valley, near Spokane, Monday night by Sheriff Charles Summerfield, according to word received at the sheriff's office last Tuesday. The men arrested are Frank Barnum, Tom Jackson, J. A. Miller, Chas. Thompson and George Wilson. A warrant for their arrest was sworn out from the complaint filed in probate court by Pat Malone, deputy sheriff.

An automobile, identified as that seen at Bovill the night of the burglary, led to the arrest of the men at Pleasant Valley. A large part of \$15,000 worth of clothing and groceries alleged to have been taken from the Groh Brothers' store at Bovill, Idaho, was recovered.

Barnum and Jackson confessed to robbing the Bovill store and were brought to Moscow Wednesday. It is believed the other three will be taken to Colfax, Wash., to answer in connection with the robberies of railway cars and the station at Oakesdale, Wash., Oct. 5.

The view is held by the officers that the men who robbed the store at Bovill are the same as those who entered and robbed the places at Craigmont and one at Nez Perce on Saturday night.

Got Big Mule Deer

The hunting party composed of Ed. Deobald, Joe Gardner, George Crocker, Earnest and Bill Clem, returned home Sunday from a weeks hunting in the Selway country. They report having had a very successful and enjoyable trip. Ed. Deobald and Joe Gardner each got a deer while Bill Clem bagged the largest mule deer that has been brought out of the Selway country this season. It had to be skinned and quartered in order to pack it out.

The party were on their return trip and had gone about a mile from camp when Bill noticed a large mule deer on the opposite side of the river. He decided that this was his and that he was going to get it—and he did. It had a fine set of horns and it was necessary to build a raft in order to get it across the river.

Passenger Train Wrecked

Memphis, Tenn.—Twenty dead and more than 54 injured is the known toll taken when the Sunnyland, a fast St. Louis and San Francisco passenger train left the rails near Victoria, Miss., Tuesday, tumbling into a tangled mass down a forty-foot embankment. The train was traveling about 50 or 60 miles per hour and apparently there was a spread in the track about 200 feet from the 40-foot trestle. The engine cleared the trestle, as did the first baggage car coach. The engine did not leave the track. Three baggage coaches and nine day coaches and Pullmans made up the train. All of the coaches except the last Pullman rolled down the 40 foot embankment.

Timber Railroad Contract Let

Men And Material Being Rushed to Orofino

In the matter of the construction of the 41 miles of railroad from here to C. F. P. D. headquarters, contract for which was let to the Twohy Bros., of Spokane last week by President Donnelly of the N. P. railroad, things are moving along faster than most of us imagine and the dirt will be flying in a very few days, according to present indications. James Twohy, member of the contract firm, and M. L. Boss, who will have general charge of the works, arrived here Tuesday and established headquarters at the Helgeson hotel. Since that time the hotel has been the scene of daily and nightly conferences of subcontractors and jobbers of all kinds and the village is full to overflowing with company men and laborers. The hotels have been unable even at this early time to care for all the new population and so far no camps have been opened, although plans for them are well under way.

Several of the subcontractors are on the ground arranging for their camps and transportation of equipment. Rumsey & Jordan, who have the sub for the first 14 or 15 miles, have leased the new fair building where they will put in a temporary camp and afterwards probably establish a warehouse. They will also place camps at the Hudson residence above Glenwood, at the point where the wagon road leaves Orofino creek and two or more above there. Murphy & McVicker have the subcontract for the next 4 miles (near the Paulson place) and they and Chas. Bennett, who has six miles on Quartz creek, are arranging for transportation of equipment to the amount of more than a hundred tons.—Clearwater Tribune.

Contest For H. S. Writers

Short story contests for high school writers are provided for in a plan announced by the editors of The Blue Bucket, official student magazine of the university of Idaho. Each high school in the state is invited to submit what its English department judges to be its best short story for each of the four editions of The Blue Bucket published during the year. The editorial staff will judge all stories on hand for each issue and the best one will be published. Near the close of the school year the staff will select one from the four published stories and the winning author will be awarded in the name of his school, a handsome cup to be presented at the school's commencement exercises.

New Parking Ordinance

Those who may happen to spend the night at Lewiston will have to park their cars somewhere else besides on the main street as a new ordinance has been passed forbidding the parking of cars on the main street for a longer time than 1 o'clock in the morning and that all cars found on the street after that time will be taken to a garage by the police and the charges taxed against the owner. This piece of information might be a good thing to bear in mind.

Craig Buys 480 Acres Land

A deal was closed Tuesday, thru G. F. Walker local real estate dealer, whereby Claude Craig of Leland purchased 480 acres of pasture and timber land along Lepold canyon on Cedar creek ridge. This makes approximately 900 acres of land that Mr. Craig now owns in the Cedar Creek section. He intends to use the land for pasturing purposes for the time being at least.

Idaho Prison Overcrowded

Recent statements show that in the Idaho penitentiary there are 320 prisoners although the prison is fitted with cell-rooms to accommodate only 200 prisoners. Whether this condition bespeaks growth on the part of the state, vigorous law enforcement or increase in crime is not indicated.

RELIABLE MERCHANDISE

At Welcome Savings

There is a Wealth of Pleasing and Interesting Things to Reward the Crowds which These Very Low Prices Should Bring

SWEATERS

Men's, boy's and ladies sweaters all at Clearance Sale Prices.

SERGES

Heavy wool and cotton serges in all colors. a yard 89c

Ladies, Suits, Coats and Dresses

Friday and Saturday, October 30th and 31st.

OVERCOATS

Think of it! Men's all wool overcoats at this sale for

\$10.98

Men's raincoats as low as \$2.19

Pillow slips at 29c each

Library Paste

Regular price 25c, sale price

14c

Boys corduroy pants **98c**

Best grade 32 inch gingham at **19c**

Stag Shirts

Men's all wool stag shirts, sale price

\$5.38

Boy's heavy all leather shoes **\$1.59**

A good grade of cretonnes at **22c**

Hose

Ladies silk hose, all colors, 3 pairs

\$2.49

High grade cotton blankets **\$1.98**

Men's flannel shirts **98c**

CAPS

A new shipment of boy's and men's caps at sale prices

Outing flannel per yard **17c**

Ladies silk and wool hose for **98c**

You'll Feel a Glow of Satisfaction and Pride at These Savings

Night Gowns

Ladies' and girl's outing flannel night gowns at **97c**

Goodrich Zipper

The famous Goodrich Zipper for ladies' boys and girls, on sale

Sheeting

High grade 81 inch bleached sheeting at **59c** a yard

Men's dress shoes, all leather sale price - **\$2.98**

Steam refined Borax soap, 12 bars for - **\$1.00**

Shoes

Ladies oxfords in the new tan or black, three eyelet and low heel, sale price **\$3.48** and **\$3.98**

KENDRICK STORE COMPANY

Woodchucks Easy to Exterminate

Calcium Cyanide and Carbon Bisulphide Put the Rodents to Death.

"Woodchucks, or ground hogs, are found on nearly every New York farm, and they always have a 'coming' appetite for cabbage, clover, alfalfa, beans and grains," says M. D. Pirnie of the New York State College of Agriculture at Ithaca.

"In woodlots and hilly pastures they are usually kept in check by their natural enemies, dogs and foxes," Mr. Pirnie says, "but in the open fields, and around vegetable gardens, there is so much food and so few natural enemies that measures must be taken to guard crops and prevent the 'chucks' from digging holes in the meadows and cultivated fields."

Farmers Must Co-Operate.

Because woodchucks may travel considerable distances in the spring and fall, neighboring farmers must co-operate to clean up an area. Woodchucks like to dig in railroad embankments, and these should be watched as distributing centers for nearby farms. The college is glad to help farmers with eradication campaigns, and in many localities county agricultural agents are planning demonstrations of clean-up methods. Shooting, trapping, and poisoning are unsatisfactory ways of handling the woodchuck problem, as they take too much time and trouble. A substance that gives off poison gas provides the best and most economical way to kill them, according to the college.

The gas from liquid bisulphide kills the "chucks" in their dens. "In using it, plug all openings but one," says Mr. Pirnie; saturate a small wad of cotton with about three tablespoons of the liquid, and shove it well into the burrow. Then plug the last opening.

Some persons claim that exploding the carbon bisulphide gas gives surer results, and they reopen the hole after about half an hour and set it off with a torch fastened to the end of a pole. Carbon bisulphide is very explosive and inflammable, Mr. Pirnie cautions.

so that it is unwise to smoke while placing it.

Gas Kills Woodchuck.

Calcium cyanide in flakes or granules may be used in a similar manner, he says. A tablespoonful placed deep down in the burrow gradually gives off a poisonous gas and kills the woodchuck. In extensive holes, with several openings, it is best to place some cyanide in each of them, of course closing all the openings. In May and early June, before the grass gets high, it is easier to see the woodchucks and locate their dens. Before the cyanide or bisulphide is placed, the person using it should make sure only woodchucks use the holes, so that no skunks will be killed. Skunks are valuable fur-bearing animals protected by law, and also are of considerable value on farms, because they feed on injurious grubs, cutworms, and mice.

Mr. Pirnie emphasizes several precautions: carbon bisulphide is explosive and must be kept from flames and heat; calcium cyanide is very poisonous and must never be scattered where poultry can find a single particle. Cyanide cans must always be opened outdoors, for a concentration of the gas from it can prove fatal to humans as well as to woodchucks. The hands should always be washed after using cyanide.

Kill Mites and Lice

Cylinder oil and kerosene mixed and sprayed in the chicken house will keep the mites away, but it will hardly have any effect on the body lice. For these use sodium flouride or good louse powder, forcing it through the long feathers that cover the abdomen in that place it will get all the lice in a very short time. This treatment should be repeated in about ten days in order to kill the lice that are hatched during that period.

University of Illinois Finds Weed Eradicator

Selenium compounds were found more useful in destroying weeds than as insecticides for trees and plants by Miss F. Marion Lougee and B. S. Hopkins of the University of Illinois in testing the possibility of substituting selenium for sulphur compounds in plant sprays. Selenium, a chemical substance of the sulphur family, is more poisonous than the latter, but

was found to be injurious to foliage. But the properties which make selenium compounds undesirable for spraying trees in leaf may make them useful for combating pear blight, oyster-shell scale, blister canker and other plant diseases, in the opinion of the experimenters. Compounds of this substance are very deleterious to such plants as dandelions, burdock and plantain, but hardly affect grass and clover, which may make it a valuable new weed eradicator.

Old Fowls Not Sure as Layers in Cold Weather

Age is no indication of worth in the feathered kingdom. Old hens do not make dependable winter producers. They are usually occupied with their molt about the time high prices are ruling. These hens may be very desirable for breeding good chicks for the next season, but the early-hatched pullets are the ones that shell out the winter eggs. Early hatched birds are those that reach laying age before severe cold weather sets in. The light breeds, like the Leghorns, will begin to lay in five or six months, but a month or two must be added to this for the American breeds like the Rocks and Reds. Asiatics require from nine to ten months, and hence are not profitable as a rule.

Hen Most Efficient of Animals on the Farm

In the amount of edible food solids manufactured, as compared with the weight of the dry matter in her body, the hen leads all other farm animals. A three and one-half pound Leghorn hen that lays 200 eggs per year produces five and three-quarters pounds of edible food solids. The dairy cow is the only other farm animal that is comparable to the hen in this particular.

A Jersey cow weighing 1,000 pounds and giving 7,000 pounds of milk containing 14 per cent solids would rank equally as high among dairy cattle as a producer as the hen laying 200 eggs. Such a cow would produce 980 pounds of edible solids or 2.9 times the dry matter in her own body.

The man who consistently follows a well-established live-stock system on his farm is more prosperous than the man who tries to be in when conditions look good and out when they look bad.

Some Great Advantages of Alsike Clover Crop

Nearly every farmer knows that alsike clover will grow in wet sour soils, but it is not generally known that on any land it will grow as many tons of hay to the acre and carry as much nitrogen in the roots as red clover; besides, that it costs less and takes half as much seed to an acre.

In a ten-year experiment at the Ohio experiment station alsike clover made 2.6 tons of hay to the acre, whereas at the first cutting red clover made two tons.

Most farmers prefer red clover where it can be grown because it stands higher, lodges less, and will grow a second cutting. Though alsike clover yields as well as red at the first cutting, it appears to yield less because it does not stand as high in the field, but when weighed out as hay alsike sometimes has the advantage. Alsike will lodge. Where it is grown as hay it usually should be sown with other clovers and timothy. This practice, of course, is common, but many farmers do not realize that alsike is the earliest maturing of any of our common clovers. It is ten days ahead of red clover, and if planted with timothy the crop should be harvested when the timothy is just coming into head. If the crop is harvested early, indications are that there will be a better chance for a second cutting.

Sunshine Best Agent for Sterilizing Utensils

In order to keep dairy utensils in a thoroughly sweet-smelling condition they should be kept out of doors where they have a chance to air out and become dry. Sunshine is one of the best agents for sterilizing utensils.

A convenient and practical way to do this is to use a rack with wooden pegs over which the utensils can be hung. This exposes them to the sun and air, both of which help to keep them in a sweet, sterile condition. Do not try to wipe the utensils dry, but simply scald them after they have been thoroughly washed, and then hang them over the pegs so that they may drain and dry. A dishcloth is often a source of contamination and does more harm than good.

In washing the strainer cloth it is advisable to first rinse it out in cold water. Then soak it in a hot solution of washing powder and then rinse out in clean, hot water. When clean it should be hung out in the sun to thoroughly dry.

Not Likely to Be Done

An express train traveling 60 miles an hour could circle the globe in less than 20 days if there was a track for it to pass over without stopping.



Thrifty people are beginning to learn that shoes will give much longer service if they are promptly repaired when they become worn.

N. E. WALKER
Boot and Shoe Garage

If you want to buy a cow, a team, mules — or anything — try a Want Ad in the Gazette.

FARM FACTS

Smother the smut with copper dust.

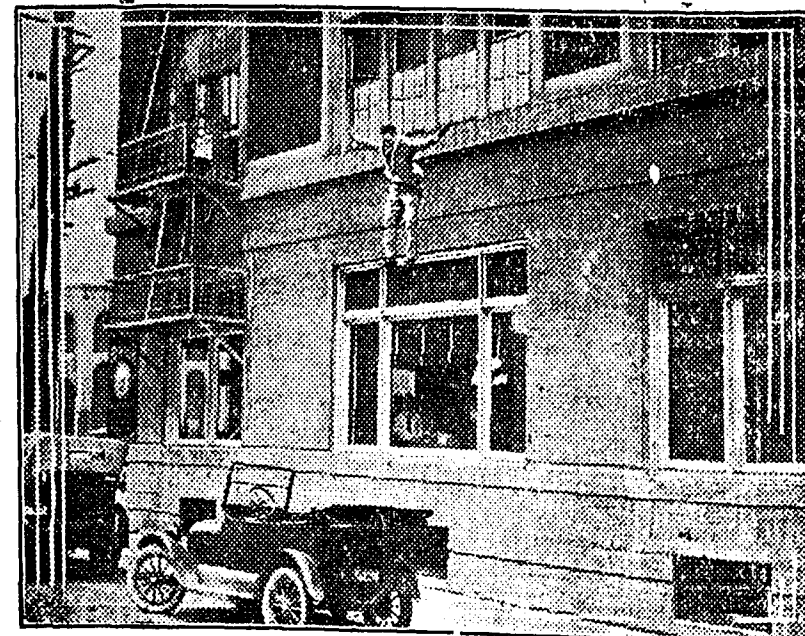
Treat seed wheat with copper carbonate for smut prevention.

Weed seeds planted are paid for at the price of crop seeds. Know what you sow.

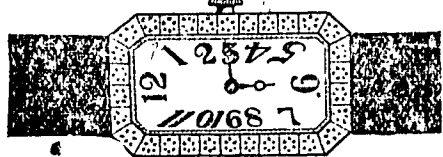
A few pounds of poison bran mash makes an ideal farewell banquet for the grasshoppers.

Where soil fertility is a problem the absence of a legume in the rotation hastens the date of the sheriff's sale.

There is only one rule to go by in the case of trying to thicken a thin stand of alfalfa. That rule is, "Don't try it."



Scene from "Let's Go" which is being shown at the New Kendrick Theatre tonight and tomorrow night.



The New Shapes

In our display of wrist watches are the new shapes so popular this season. Their development and designers show an expert skill that is most entrancing.

L. S. LaHatt
Jeweler

We print ANYTHING at the Gazette shop, and prices are right.

N. R. Shepherd

The Auctioneer

TROY, IDAHO.

General Blacksmithing

Wagon and Carriage Shop
Repairing of all Kinds
Neatly Done
All Work Guaranteed
Frank Crocker

Black Flowers

Species of rhododendrons which produce perfectly black flowers were recently discovered by an English botanist in Tibet.

Suitable Way to Cure Seed Corn

Moisture Must Be Removed From Ears Quickly to Prevent Spoiling.

Ears of corn that are picked for seed usually have more moisture in them than is suspected. Thirty per cent or even more of the weight of an ear is water. In air-dried ears the moisture content will range from about 15 per cent and under. The surplus is removed through curing and the sooner it is removed from the ears the less will be the danger of the seed spoiling. Moist corn will mold very easily and then the vitality of the kernels will be very much reduced. Furthermore, there is the danger of freezing weather which entirely destroys the seed if it is frozen. When seed ears are once cured no amount of freezing can injure them.

Reduce Moisture Content.
The chief problem then connected with curing for the seed is to reduce the moisture content as soon as possible. Proper ventilation and the application of heat will do this. In many years suitable ventilation is all that is required, especially when corn has matured early and the fall weather is warm and dry. But we cannot always take for granted that this is the case. If we could, ears selected from the crib would be satisfactory to use. To avoid all danger seed corn should be cured in a place where there is an opportunity to provide some heat in case it is needed.

Since ventilation, to carry off the moisture, is so necessary, the ears ought to be stored in such a way that no two ears touch. This will provide a free circulation of air about each ear and it will thus cure in the shortest time possible and at the same time

all kernels will dry out equally. This will make seed that will have the most uniform germination. This may be termed the individual-ear method of storing and is always the safest to use. Seed ears should never be stored in sacks or in piles. It is even dangerous to pile one row on top of another, at least until the moisture content has been considerably reduced.

Useful Stringers.
There are numerous devices that one might think of that will accomplish this purpose. Corn stringers answer the best, and any boy can make them. Finishing nails driven into a piece of board will do very well. The ears may then be driven into place by shoving the nails into the pith of the cobs at the butts. Care should be taken to drive the nails far enough apart so that when ears are arranged no two touch, as already explained. One may drive enough nails into a post that has been fastened to a base so that it will stand upright to accommodate a large number of ears. Racks made out of lath will also do very well. In fact, any scheme may be used which does not permit the ears to touch each other.

If the space occupied by the ears during the curing process is not needed for anything else and if the corn is protected from mice and rats, it may be left where it is until testing and planting time comes. If it must be removed then it should be packed away in containers that are mouse and rat proof and stored away in a dry place. Air-dried corn will keep if stored in a dry place, no matter how cold it is. Any amount of freezing will not injure seed ears when they are once cured out.

HEIR PRESUMPTIVE



John D. Rockefeller III, snapped at the wedding of his cousin, Isabel Rockefeller, at Greenwich, Conn.

Standards for Beans Have Been Issued

Will Tend to Encourage Better Market Preparation.

(Prepared by the United States Department of Agriculture.)

Tentative standards for beans have been issued by the United States Department of Agriculture following a series of public hearings in leading bean producing sections of the country. The standards include nineteen different classes of beans and are proposed for adoption and use by state and commercial agencies to demonstrate their practicability under commercial conditions before official standards are established.

The importance of standards for this commodity is emphasized by the department in a statement that the commercial dry edible bean crop of the United States returns to farmers over \$50,000,000 a year. Beans are an important staple food, standards for which, the department says, would tend to encourage better farm preparation for market resulting in larger returns to growers, would reduce hazards incident to marketing, and would improve the quality of the finished product.

More than 1,600 samples of beans were analyzed by the department to determine the range and limits of various quality factors in making up the grades. The tentative standards are made up of seven sets of grades for as many classes or groups of classes, the specifications giving weight to local production and marketing problems, as well as to consumer requirements.

Copies of the report of the department's bean marketing investigations together with copies of the tentative standards may be obtained upon request to the bureau of agricultural economics, United States Department of Agriculture, Washington.

Cleaning Hint

Try using a paint brush instead of the ordinary duster when dusting carved furniture. You will find that the brush can get into all the crevices and you will get along much quicker than if you used a duster.

Soil Injured by Using Chemicals

Weed Killers Not Recommended for Destruction of Noxious Plants.

The use of chemicals for the destruction of perennial weeds in crop fields is not recommended. It will cost as much as intensive cultivation or smothering in addition to leaving the ground sterile, declares A. L. Stone, weed specialist of the Wisconsin College of Agriculture.

Every year many inquiries come to the Wisconsin experiment station concerning the value and use of chemicals for the destruction of weeds. Mr. Stone reports that there are several chemicals which can be used for this purpose. Among the best are sodium arsenate, sulphuric acid, copper sulphate, iron sulphate, and common salt. There are others but high cost or difficulty in obtaining them make their use undesirable.

Patent "Weed Killers."
Several patent "weed killers" are being sold, some of them as high as \$3 a gallon. These are no more effective, according to Mr. Stone, than a solution of sodium arsenate and water, which can be made at a cost not to exceed 20 cents a gallon, including the labor. To pay more is a waste of money and helps to enrich the promoter at the expense of the land owner, Mr. Stone declares.

Sodium arsenate is a deadly poisonous chemical and cannot be used where live stock can feed on the plants to which it has been applied. Sulphuric acid must be handled with great care since it burns the clothing or skin badly if it comes in contact with it. Iron sulphate makes brown stains on any white surface such as cement walks and buildings.

In practically all cases the numerous or heavy applications required to destroy perennial weeds will also destroy the crop-producing power of soil, Mr. Stone asserts. The length of time during which the soil will be useless depends upon the kind of chemicals used, the character of the soil, and the weather conditions.

Places for Chemicals.
Mr. Stone believes that there are special places like fence rows, rough pastures where the infested area can be fenced, stony ravines, groves and other out-of-way places where chemical solutions may be used to advantage. Even in such cases, he urges that the experiment station be consulted as to the best chemical to use for the purpose.

Big claims and big prices for chemical "weed killers" are not justified, Mr. Stone concludes. Taking all the factors into consideration crop rotations, intensive cultivation and smothering are still the effective and standard methods for destroying weeds in the fields, meadows and tillable pastures.

Ice House Is Desirable for Production of Milk

An ice house on every dairy farm where natural ice can be harvested is highly desirable for the production of milk having a low bacteria count, and no time is better than early winter for constructing one, for it is at this period when work on the farm is less pressing. The department of dairy husbandry at the New Jersey

Novelty Material Extremely Attractive for Sports Wear



Novelty wool-and-silk material forms an attractive straight-line coat with border of brown fox fur. Posed by Edna Marion, appearing in Universal's production of "The Still Alarm."

College of Agriculture, New Brunswick, reports that it will be glad to answer any questions relative to ice-house construction.

In building the storage house allow space for at least 1 1/2 tons of ice per cow. This will cool the milk, allow for melting, and provide a margin for the household.

If no river or lake is at hand an ice pond can sometimes be constructed. Whatever is used, the water should be of unquestioned purity. Old ponds should be cleared of the vegetable matter and refuse which often collect around the edges.

Stable Manure Is Quite Beneficial to Gardener

Stable manure has really a trinity of values in plant food, humus and beneficial bacteria. While conditions may make it very difficult or impos-

sible to obtain, at the same time the wise gardener will never willingly do without it. A ton or two, or a load of manure will not be one whit too much for a garden 30 by 60 feet, although a much smaller amount will give good results, if supplemented by compost of leaves, lawn clippings and the like, by green manures and commercial fertilizers.

Stable manure is rich in nitrogen and well supplied with potash, but the phosphoric acid can be increased profitably by about 50 pounds of acid phosphate for every ton of manure.

Sun-Dried Oysters Eaten

In Mongolia sun-dried oysters are a common article of food and are sold in the market places. They are sold loose, in a wreath form, spitted on sticks of rattan or circled after being dried for hanging in stores. They are not so palatable as fresh oysters, but they are eaten either dried or stewed.

Announcement

We have taken over the business formerly known as Red's Garage and will conduct a strictly modern garage, with expert workman, and any work done by us will be absolutely guaranteed.

We are well equipped to handle any repair work you may need done, from overhauling your engine to changing a tire. Give us a trial.

Main Street Garage

Glover & Schulze, Proprietors

Don't Be Mislead!

There are many makes of neutrodyne radio sets on the market and one is apt to be misled when purchasing.

FADA

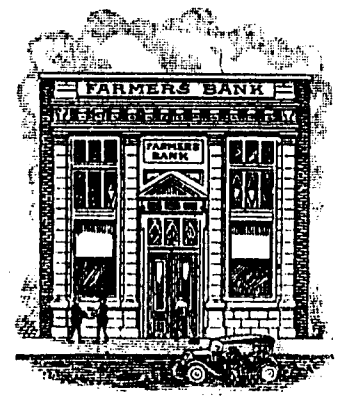
Neutrodyne means in the radio world what Packard means in automobiles. It is the best that experts can produce.

We will gladly make demonstration tests along side of any set made, (regardless of price), as to clearness, tone and volume.

FADA \$85.00 to \$125.00
Neutrodyne Radio Less Accessories

Hear the FADA before you buy

Schupfer Brothers



Would A Thief Get Your Valuables?

Keeping valuable paper, heirloom pieces of jewelry and other priceless possessions about the home where they are in constant danger of thieves, is such folly when you can, at so little cost, rent a safe deposit box, ample in size, to keep them in safety. If you have never been into our safety vault, take the time tomorrow to inspect it. Then you can see for yourself what a big measure of safety you may secure at a minimum cost.

THE FARMERS BANK

Kendrick, Idaho

VECTO

The New Heat Distributor

Two More Ideal Vecto Heaters Installed This Week

One Customer Says:

"Even the farthest corners of each room are warm and comfortable. We can hold the temperature of our house to any degree we wish and yet we are using less fuel than we did with our old stove.

COME IN TODAY

and see it's sturdy construction. It is built to last a life time.

HOT STUFF!

Our stoves are a great success! You'll warm up to them and be fuelly satisfied.

Rebuilt Heaters at a good saving.

Kendrick Hardware Co.

"Try Kendrick First"

COMING IN - - - GOING OUT

Of our garage and repair shop, you have the satisfaction of knowing that your car will be, or has been, properly taken care of.

All kinds of repairs and adjustments will be made promptly by mechanics who know their business. And another thing that pleases our customers is the fact that your car will be ready at the time promised.

Bring the car in this week.

Kendrick Garage Company

Deobald Bros, Props

THE KENDRICK GAZETTE

Published every Friday at Kendrick, Idaho, by

Ralph B. Knepper

Subscription price.....\$1.50

Entered at the post office at Kendrick as second class mail matter.

Leland School Notes

Last Friday evening about thirty people, including teachers, took in the Kendrick-Troy debate at Kendrick.

Miss Powell spent Sunday at her home in Clarkston.

Miss Otteson was at Juliaetta over Sunday.

Saturday evening, Oct. 31, the school will give a program and have a school fair in connection. After the program the Epworth League will hold a Carnival, the proceeds to apply on the new church piano. Everybody is invited to attend.

Last Saturday afternoon, Miss Hartung, primary teacher of Southwick was a visitor at the school.

The boys of the High School have erected a punching bag to take out their surplus energy on.

The pupils of the primary and intermediate rooms are spending spare time making Halloween decorations. Some excellent posters have been produced.

Next week is test week. Mr. Calvert prefers giving a test every month rather than once a semester. Those pupils making an average of 80 in the monthly tests are excused from the semester examinations.

CAMERON ITEMS

Miss Josephine Wilken was the week end guest of the Misses Blum at Kendrick.

Mr. and Mrs. Aug. O. Wegner and family were visiting at the Kruger home at Lewiston the last of the week.

Walter Rietze has moved his household goods to Walla Walla where they will reside this winter.

The son of Mr. and Mrs. Aug. Brammer and the son of Mr. and Mrs. Will Wolff, were baptized at the Lutheran church, Sunday.

Mr. and Mrs. Aug. Brammer entertained at Sunday dinner in honor of their son, Harold August, who was baptized. Guests: Rev. and Mrs. Rein and sons, Mr. and Mrs. Henry Brammer and family, Mr. and Mrs. Carl Koepf and son, Mr. and Mrs. Blum and family, Mr. and Mrs. Herman Meyer and daughter, Mrs. Henry Meyer, Herman Siffow, Mrs. Bronsiek and sons, Grandmother Brammer, Mrs. Bleck and Mr. and Mrs. Henry Wendt.

The Sunday evening guests were Mr. and Mrs. Geo. Ehlers and daughter, Mr. and Mrs. Carl Wegner and family and Edwin Easterbrook.

Those that went Deer hunting at the Selway were Wm. Mielkie, Fred Newman and his brother, Herman of Wardner, Idaho. They claim they got the limit.

FAIRVIEW NEWS

Miss Emma Glenn who is attending school at Juliaetta, spent the week end with home folks.

Mrs. Frank Lancaster and son, Robert, of Spokane, are visiting relatives and friends here for a couple of weeks. Mr. Lancaster came down on Friday, returning to his work on Sunday by motorcycle.

Herbert Wolff was a Lewiston, visitor the first of the week.

Miss Elizabeth Hund who is teaching the Fairview school spent the week end with her mother at Leland.

Mrs. A. G. Peters and daughters, spent the afternoon Friday with her sister, Mrs. Virgil Flesham.

On Friday evening relatives and friends gave Mr. and Mrs. Milton Parsons, who were recently married, a surprise shower. They received many beautiful articles. After several hours spent at games and music, a delicious lunch was served and everyone departed wishing the young couple many happy returns.

A number of friends and relatives gathered at the home of Mr. and Mrs. Tom Daugherty, Sunday, with well filled baskets to help Mrs. Daugherty celebrate her birthday.

Mr. and Mrs. O. A. Walker and son, Orval, were Sunday visitors at the L. L. Yenni home.

Mrs. Lyle Harrison and sons, spent Wednesday afternoon with her sister, Mrs. Flesham.

BIG BEAR RIDGE

Mrs. Halver Lien entertained the Lutheran Ladies Aid at her home, Tuesday afternoon.

Mr. and Mrs. Wade Keene and

children spent Sunday with friends on American ridge.

Miss Pearl May returned to Troy Saturday having spent the week with her parents.

Mrs. James Nelson entertained the Ladies Guild, Wednesday afternoon.

Miss Marie Sindo, Oscar Sindo and Mrs. Hartvick Nelson were Moscow visitors, Saturday.

Rev. J. O. Sibert of Deary will preach at the old U. B. church, Sunday, November 1, at 11 a. m. A cordial invitation is extended to all. Rev. Sibert had charge of this church here several years ago, and your attendance will be appreciated.

Preaching services at the Lutheran church, Sunday, November 1, at 11 a. m.

Wilbur Babcock arrived here from St. Maries last week and will spend the winter with his mother, Mrs. Ida Comstock.

Rev. and Mrs. J. O. Sibert of Deary were visiting at the D. J. Ingle home the first of the week.

Latah County News Paragraphs

Items of interest Taken From Neighboring Papers

While no definite announcement has been made much interest has developed in the persistent rumor that plans are being made to build a highway from Kendrick to Big Bear Ridge to take the place of the old hill road. It is stated that a 5 per cent grade can be secured by following up Pine Creek.

This proposed road has been advocated for several years, and especially since the organization of the highway districts.

Slowly but surely the road from Kendrick toward Lewiston, down the Potlatch and Clear-

water rivers is being brought to a level grade and surfaced. With this road completed, and a good grade up the hill this way from Kendrick, it will be possible to drive from Deary to Lewiston in an hour and a half. It takes three hours to make the trip via the North and South highway.—Deary Press.

NEW COLLEGE PREXY



Dr. C. P. McClelland, for eight years president of Drew seminary, Carmel, N. Y., has been appointed president of the Women's college, Jacksonville, Ill., to succeed J. R. Harker, who resigned. President McClelland has been prominent as a Methodist clergyman and bibliologist.

Hog Wallow Rectangular in Shape Is Convenient

It is most convenient to make the hog wallow rectangular in shape with rounded corners and of a depth of not over 18 inches shallower at one end. A pool 15 to 20 feet long and 10 feet wide will be found amply large. The floor and side walls should be six

inches thick, reinforced with wire mesh. A concrete floor four feet wide should be laid around the wallow to prevent the hogs from burrowing under or carrying in mud.

The wallow should be located near the water supply. If from a spring the water may flow through the pool continuously but if from a tank the wallow should be emptied and refilled at intervals. A good plan is to drain the outlet to the nearest line of tile.

Many of the poultry losses are caused by spoiled grain and decomposed animals being allowed to remain around the farm.

Rats kill a surprising number of chickens, and very often the cause of the loss is not discovered for a considerable length of time.

Corn is the most practical crop for ensilage and also makes the best feed, especially so when soy beans are planted along with the corn crop.

METHODIST CHURCH

KENDRICK

November 1, 1925

10:00 a. m. Sunday school

11:00 a. m. Morning Worship

Special Music

Sermon by Rev. N. M. Jones, Pastor of Moscow M. E. Church.

12:30 p. m. Basket lunch in the basement of the church.

2:30 p. m. Evangelistic Sermon

5:45 p. m. Social Hour for Epworth League.

6:30 p. m. Epworth League devotional.

6:30 p. m. Junior League in auditorium, Leader, Miss Juanita Stanton.

7:00 p. m. Evening Service

Sermon by Dr. C. E. Miller, district superintendent

Special Music.

Everyone in the entire town and surrounding country is cordially invited to all these services.

Come! Bring your lunch and enjoy the fellowship.

It is planned that all these services shall be very devotional. The big drive to remove the church debt will be Monday, Tuesday, and Wednesday, however no subscription nor collection (except the regular offering, will be taken Sunday.

Our Greatest Community Asset!

The Church

Object: ENRICHMENT of LIFE

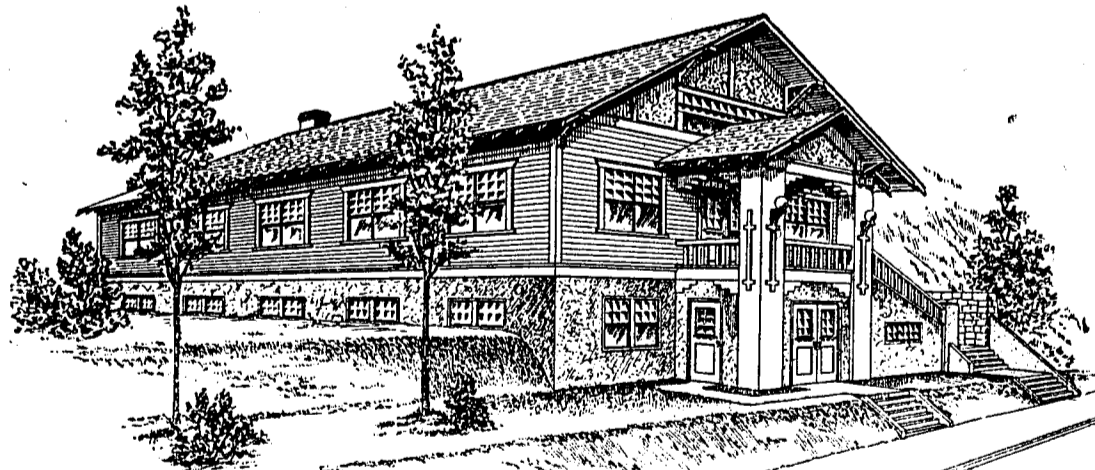
Program: Social, Cultural, Devotional and Spiritual

A church in a community should, if unhampered, make distinct contribution to the life and interests of that community. Its program is providing gatherings of various kinds, affords social privileges for all people under uplifting conditions, especially so with young people who may meet for social evenings under the direction of church leaders.

2nd—The educational value of the church is inestimable considering what knowledge of the Bible and religion, as taught in the Sunday school, has done for mankind.

3rd—The moral and religious influence of the church as affecting the social, domestic and commercial life of the country.

Seven Days a Week. Homelike. Cordial.



Methodist Episcopal Church, Kendrick, Idaho

Here to Point Men to Christ

Here For Service

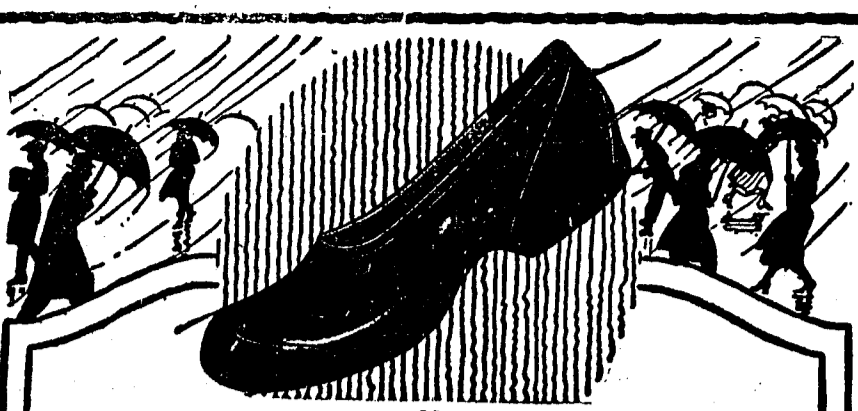
When the Methodist Church was built in this city an indebtedness of several thousand dollars was carried over. The time has come when a payment must be made on that indebtedness. At a recent meeting of the Quarterly Conference it was decided to launch a campaign to raise \$1500.00 of the present debt, and November 2, 3 and 4 were designated as the dates of that campaign.

This community could not afford to be without the influence of the church! This community should not consent to allow a church to be interrupted in its working program by an indebtedness of a few hundred dollars! Every individual who lives in this community has a responsibility to support and maintain the institution that contributes to the betterment of life.

It is therefore expected, by those who are more especially responsible for the obligations of the church, that they will have the hearty cooperation and liberal support of their neighbors and friends in this debt paying campaign.

Signed: Board of Trustees of the Kendrick Methodist Episcopal Church.

Will You Be One To Help Pay It Off?



BALL BAND

Light Weight Rubbers

Keep your feet dry and comfortable. Save your shoes. Avoid colds. Buy rubbers. If you want "Ball-Band" Light Weight Rubbers with the famous Red Ball trade mark on the sole, come here for them. We have the sizes for men, women and children.

Remember that ten million people look for that Red Ball before they buy Rubber Footwear, because it means Highest Quality in rubbers.

Malone Pants

All wool and a yard wide. That's the stuff Malone Pants are made of. A large stock of these pants to select from.

Heavy all wool at \$7.50

Medium weight, all wool \$7.00

Other makes of wool pants as low \$3.00 a pair

N. B. LONG & SONS

"The Home of Good Things to Eat and Wear"

Use Clearwater Crystal White Chicken Grit and Fertilizer

Our chicken grits are hard, answering purpose of grits, and you have the lime contents as an egg shell maker. For sale by your local dealer.

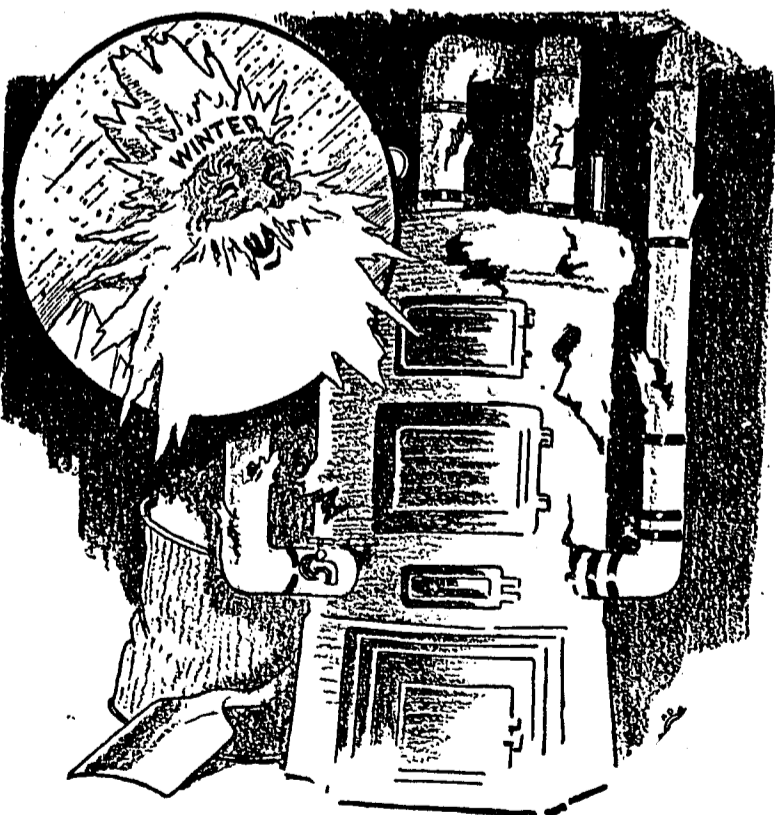
Your Land Needs Lime

Write us for circulars on our fine ground Lime Dust. Sent by request.

Manufactured by

IDAHO MARBLE COMPANY

Lewiston, Idaho



Winter Weather is Coming

Now is the time to look over your furnace or heaters and put 'em in shape, fix your coal bin and then lay in a supply of coal. This done you need not dread the cold winter weather because you will be prepared for it. Phone us your coal order now—there's no time like the present.

Barnum Lumber & Mill Co.

Phone 632

Professional Cards

Dr. William T. Seeley
Physician
and
Surgeon
Kendrick, Idaho

Dr. Geo. W. McKeever
DENTAL SURGEON
Phone 812
Kendrick, Idaho

A. H. OVERSMITH
Attorney-at-Law
Urquhart Building Third Street
Moscow, Idaho.

GUY W. WOLFE
ATTORNEY
Moscow, Idaho

Dr. W. G. LAW
Chiropractor
Office over Groseclose Store
Juliaetta, Idaho

Dr. Jesse H. Burgess
EYESIGHT SPECIALIST
Satisfaction Guaranteed
Upstairs over Bon Ton
MOSCOW, IDAHO

Important Glands
The ductless glands which control the height of man are the thyroid and parathyroids. As far back as 1856 the medical profession recognized the relation of these to the growth and development of the human body.

McDowell's Commercial Hotel
"A Famous Cook" for over seven years
WHY?
You Tell It!

J. J. PICKERD
Licensed Embalmer and Undertaker
Auto Equipment. Lady attendant. Stock of goods in Kendrick. Phone 462K, or 376 Troy, or see
G. F. WALKER

Draying
Residence Phone 654
Kendrick Dray and Ice
Frank Boyd, Prop.

Wm. H. Meyer
Blacksmithing, Wagon Work and Horseshoeing
All Work Guaranteed

CATARRHAL DEAFNESS
is often caused by an inflamed condition of the mucous lining of the Eustachian Tube. When this tube is inflamed you have a rumbling sound or imperfect hearing. Unless the inflammation can be reduced, your hearing may be destroyed forever.
HALL'S CATARRH MEDICINE will do what we claim for it—rid your system of Catarrh or Deafness caused by Catarrh. HALL'S CATARRH MEDICINE has been successful in the treatment of Catarrh for over Forty Years.
Sold by all druggists.
E. J. Cheney & Co., Toledo, O.

G. F. Walker
Real Estate
And
Insurance
Kendrick, Idaho

SUMMONS

In the District Court, Second Judicial District of the State of Idaho, in and for the County of Latah. Clifford Elliott, Plaintiff, vs Lucile Elliott, Defendant.
The State of Idaho sends greetings to Lucile Elliott, the above named defendant.
You are hereby notified that a complaint has been filed against you in the District Court of the Second Judicial District of the State of Idaho, in and for the County of Latah, by the above named plaintiff, of the nature in general terms as follows: To obtain a decree of divorce from defendant on the ground of desertion.
And you are hereby directed to appear and answer the said complaint within 20 days of the service of this summons, if served within said Judicial District, and within forty days if served elsewhere. And you are further notified that unless you so appear and answer said complaint within the time herein specified, the plaintiff will take judgment against you as prayed in said complaint.
Witness my hand and seal of the District Court of the Second Judicial District of the State of Idaho, in and for Latah County, this 10th day of October, A. D., 1925.
HARRY A. THATCHER, Clerk.
By ADRIAN NELSON, Deputy.
L. G. Peterson, Moscow, Idaho, Attorney for the Plaintiff. 42-6t

SUMMONS

IN THE DISTRICT COURT, SECOND JUDICIAL DISTRICT OF THE STATE OF IDAHO, IN AND FOR THE COUNTY OF LATAH.
Lena M. Cozier, Plaintiff, —vs—
Laura Dernham, Joel Kaufmann and all unknown heirs and all unknown devisees of Henry Dernham, deceased, and all unknown heirs and all unknown devisees of William Kaufmann, deceased, and all unknown heirs and all unknown devisees of Bertha Kaufmann, deceased, and all unknown owners of and all unknown claimants to any right or title to or interest in or lien or claim upon the East Half (E½) of Lots Six (6) Seven (7) Eight (8) Nine (9) and Ten (10) in Block "D" in Park Addition to the Town of Moscow, Idaho, Defendants.
THE STATE OF IDAHO SENDS GREETINGS TO Defendants.
You are hereby notified that a complaint has been filed against you in the District Court of the Second Judicial District of the State of Idaho, in and for the County of Latah, by the above named plaintiff, of the nature in general terms as follows:
To quiet title in Plaintiff to the East Half (E½) of Lots Six (6) Seven (7) Eight (8) Nine (9) and Ten (10) in Block "D" in Park Addition to the Town of Moscow, Idaho.
And you are hereby directed to appear and answer the said complaint within 20 days of the service of this summons, if served within said Judicial District, and within forty days if served elsewhere. And you are further notified that unless you so appear and answer said complaint within the time herein specified, the plaintiff will take judgment against you as prayed in said complaint.
Witness my hand and seal of the District Court of the Second Judicial District of the State of Idaho, in and for Latah County, this 15th day of October, A. D., 1925.
Harry A. Thatcher, Clerk
By Adrian Nelson, Deputy.
Frank L. Moore and Latham D. Moore, Residence Moscow, Idaho Attorneys for Plaintiff. 42-6t

IN THE PROBATE COURT OF THE COUNTY OF LATAH, STATE OF IDAHO

NOTICE FOR PUBLICATION OF TIME APPOINTED FOR PROVING WILL, ETC.
In the matter of the estate of John J. Slind, Deceased.
Pursuant to an order of said Probate Court, made on the 27th day of October 1925, notice is hereby given that Monday the 16th day of November 1925 at 10 o'clock A. M. of said day at the court room of said Court, at the Court House in the County of Latah, has been appointed as the time and place for proving the Will of said John J. Slind, deceased, and for hearing the application of Mary Slind, for the issuance to her of Letters Testamentary, when and where any person interested may appear and contest the same.
Dated this 27th day of October, 1925.
Adrian Nelson, Probate Judge. 44-3t

Harvesting and Storing Navy Beans for Winter

Navy beans should be harvested and threshed as soon as ready and if infested with bugs they may be treated by one of several methods. Fumigation with carbon bisulphide, using the chemical at the rate of about one ounce to the bushel, is very satisfactory. This should be done in a tight container when the temperature is 75 degrees or above. The chemical is inflammable and fires of all kind should be kept away. Heating for an hour in an oven with the temperature from 125 to 130 degrees will also kill the insects. Seed can be safely stored by sifting one part of air-slaked lime with twice the quantity of seed.

Local Ads

5% MONEY TO LOAN 5%
We have money to loan on improved farm property for 5-7-10 or 20 years at 5 per cent plus usual expense.
Veatch Realty Company
Moscow, Idaho.

FOR SALE: Coles air tight heater, \$12.00. Wm. A. Watts, Kendrick. 39-tf

We can handle your ledger sheets as cheaply as you can get them from a mail order print shop. Try the Gazette Shop first. tf

Wanted: to rent a ranch or could use summerfallow land. W. N. Slay, 524 Third Street, Clarkston, Wash. 41-2p

FOR SALE: 4 Duroc brood sows to farrow in about a week; also good milk cows, fresh soon. John Reid, Kendrick, Phone 132. 41-tf

If you need coal see J. F. Morley at the old Sturdevant Lumber yard, or phone 652. 42-4p

Found: Leather coat in front of Commercial Hotel. Inquire Gazette office. 43-1t

Found: Bunch of keys on leather thong. Inquire at Gazette office. 43-1t

FOR SALE: Bean straw on Koltenborn place near Kendrick. Address August Dalin, Troy, Idaho. 43-1t

FOR SALE: 150 bred ewes, 5 years old, \$10 a head, Lincoln and black face. E. L. Whisler, Linden, Idaho. 44-3t

FARM FACTS

The early seeders get the fly.
Read this until you understand it: No bull is better than a scrub bull.
Many farms could very profitably keep a few hives of bees. Sweet clover honey is the highest quality.
Bran, cottonseed meal, linseed oil meal are generally cheapest in late summer.
Wheat to be used for seeding should be treated with copper carbonate dust before planting.
Land suitable for the production of potatoes is suitable for the production of standard varieties of apples.
Plan to attend a culling school or secure the service of some one who has attended. The time is ideal for catching the slacker hen.
Sweet clover deserves a trial on any farm where the soil is sweet. It will help to decrease the pasture costs by producing more feed per acre.
If you would have something that will serve day and night all fall, winter, and early spring, striving to protect and make your lands richer, sow cover crops.
Vines of peas, beans and the like should be pulled up as soon as the bearing season is over. Spread out in the garden to dry and then burn.

Bertha Collar Latest Note in Fall Afternoon Frocks



Black crepe de Chine afternoon frock with the popular accordion pleated Bertha collar and gold embroidered brocade panel.

FARM POULTRY

WINDOW GLASS IS HELP FOR POULTRY

A short time ago scientists found that animals do better when they can be in the open at least a few hours each day exposed to the direct rays of the sun. This has been demonstrated to be especially true of hogs and chickens. The reason is that ordinary window glass acts as a filter to the direct rays of the sun. Glass filters out the so-called ultra-violet rays—the rays that have a great deal to do with invigorating the animal.
Recently Prof. L. V. Crum, physicist of Iowa State college, has completed some tests that are of interest in this connection.
Professor Crum took 24 chickens that had been kept under ordinary glass for three weeks. The birds were divided into three groups of eight each. One group was housed under glass cloth. The second group was housed under cello-glass, another product that does not exclude ultra-violet light, and a third group was housed under ordinary window glass. All were given the same feed and general care. The experiment continued for four weeks. Two of the chickens kept under ordinary glass died of rickets. The remaining six gained 180 per cent in weight during the four-week period. All of the eight chickens kept under the glass cloth remained healthy and made a gain of 250 per cent during the four-week period. The group kept under the cello-glass did not do so well as that under the glass cloth. In this group two birds also died, but it appears that one of them died from an unavoidable cause, for which the cello-glass could not be blamed. The other, however, died of rickets, but it was not a healthy bird when the experiment began.
While this test is not reported because it is conclusive, we refer to it merely to remind our readers that ordinary window glass is not as good a product as we have been in the habit of thinking, because it screens out some of the most active rays of the sunlight, says the Wisconsin Farmer. No doubt the open front houses that have come into such general use in recent years owe their beneficial effect upon the flock at least partly to the fact that the ultra-violet rays of the sun pass freely through the curtain fronts.

Many Poultry Diseases Are Easily Preventable

Though most poultry diseases are curable, they all require more time and work than the average farm flock is worth. Therefore, it may easily be seen that prevention should be the first and most important rule in poultry sanitation and disease control. Roup, tuberculosis, chickenpox and fowl cholera are the most dangerous diseases affecting chickens.
Most farm poultry houses lack a simple and effective method of ventilation. In many houses the fowls are overcrowded, and when this is the case and there is no good method of ventilation, the air is sure to become damp, and we all know that it is in just this sort of an atmosphere that roup thrives. To avoid this condition, see to it that the front of your poultry house has an open space that equals at least one-fourth of the floor space of the building. And allow at least three square feet of floor space for each fowl.
Poultry diseases spread through the droppings of diseased birds. Most flock owners have dropping boards under the roosts, and if they haven't they should have by all means. If a part of the flock is diseased, millions of germs may be removed through the droppings instead of leaving them in the litter to contaminate the other birds. Much of the surplus moisture is also removed through the droppings.
Keep the drinking water pure and clean, and sterilize the vessels every two or three days so long as disease is present in the flock. A teaspoonful of permanganate of potash may be dissolved in all the water it will make purple for drinking water whenever the birds seem in need of a tonic.

Poultry Notes

Separate the cockerels and the pullets.
Give plenty of feed to growing stock.
Each duck yields about two ounces of marketable feathers.
Houses must be sprayed frequently with a good disinfectant to keep down mites, lice, and disease germs.
Rations for the laying hens should be compounded so that the hens will eat at least one-half as much mash as grain.
Soft-shelled eggs may be caused by a lack of shell material, which may be the case if the hens do not have access to oyster shell.
It is profitable to keep hens comfortable. Keep the coop free from draft, still well ventilated and dry. The coldest coop is the tightly closed ill-ventilated one.

Two Essentials of Sweet Clover For Soil-Building Purposes It Supplies Organic Matter and Nitrogen.

When sweet clover is grown solely for soil-building purposes the question often arises as to when one should plow it under. As a fertilizer, sweet clover furnishes two essentials of a good soil—organic matter and nitrogen. The maximum amount of organic matter is undoubtedly obtained from sweet clover the second year when it comes into bloom. Prof. C. J. Willard of the Ohio experiment station, however, says that the maximum amount of nitrogen is obtained about May 1, the second year after seeding. Between that date and the full-bloom stage much of the nitrogen in the roots is transferred to the tops without increasing the total amount in the crop.

Tests for Nitrogen.

"In one experiment," says Professor Willard, "we sowed the clover with the oats on April 6, 1922. The same fall after the oats were harvested we began analyzing the plants—roots and stems—for nitrogen. These tests were repeated throughout the following spring and summer. A study of the resulting figures shows that during the period of greatest top growth there is a rapid transfer of the nitrogen from the roots to the tops. The roots, therefore, serve as a storehouse for the nitrogen during the winter, emptying the nitrogen into the green tops

In the early spring. By the first of May there is practically as much nitrogen in the plant as at any time during the second year's growth. To grow 100 bushels of corn requires about 150 pounds of nitrogen for grain and stover. Turning under a good stand of sweet clover during the month of April will add something like 175 pounds of nitrogen, or more than enough to supply this large corn yield."

Tests Worth Remembering.

The above statements, based as they are upon carefully conducted tests, are worth remembering. It is not always convenient to postpone plowing under sweet clover till in the spring, but it should be done wherever possible, first, because, as the above shows, one gets about all the nitrogen possible at that time, and, second, also because one gets about all the organic matter that can be plowed under to advantage and be of use to the corn crop that same year. Third, when biennial sweet clover is plowed under after it has started to grow the second spring it will not bother as a weed. If plowed under in the fall after seeding in the spring it will come up as a weed the following spring.

Length of Lunar Year

The lunar year is a period of 12 lunar months. The lunar astronomical year of 12 lunar synodical months has a length of 354 days, 8 hours, 48 minutes and 34 seconds. The common lunar year consists of 12 lunar civil months, or about 354½ days.

More Boys Than Girls

The number of boy babies born in the world is estimated to be slightly in excess of the number of girl babies. The ratio varies from 108 to 107 to 100.

The Farmers' Friend In Town

"How are your crops?" is a leading question in the country around Kendrick at this season.

IN A FEW MONTHS you'll have to ask yourself the question, "How is the money I received for my crops?"

IF THE MONEY is deposited promptly at this good bank, it won't be likely to melt away in a hurry.

TAKING GOOD CARE of crop money is one of our specialties You'll like our friendly service, too.

GLAD TO SEE YOU!

Kendrick State Bank
Martin V. Thomas, Pres. K. D. Ingle, Vice-Pres.
A. H. Daubenberg, Cashier
E. H. Emery, Asst. Cashier

We Make BEAN CLEANING A Specialty

We now have a complete stock of all ground feeds, also

Corn Meal, Farina and Flour

Your Patronage Appreciated

Vollmer Clearwater Company

KENDRICK, IDAHO

Tainted Cream Can Be Dangerous

Flavors of Kerosene, Gasoline, Etc., Will Spoil Whole Churning.

The price paid for cream depends upon what the creamery can sell the butter for plus a reasonable profit. Butter is sold on the large markets according to quality. In order to make a good quality of butter, a butter-maker must have good quality cream. First-grade butter cannot be made out of all cream received at the creamery, because some of the cream will be tainted with onion, kerosene, gasoline and other flavors. Now if a firm can get 45 cents a pound for good butter, 20 cents a pound for onion butter and only grease prices for kerosene and gasoline butter, you can readily see the result. The price paid for all butterfat will depend upon the percentage of each kind of bum cream that is received. Let us consider kerosene and gasoline tainted cream and see if the producer is not losing money.

Oil Taints All Cream.
A slight trace of oil in a cream can will taint all the cream that it comes in contact with, which usually is an entire churning. An average churning in most plants is 1,000 pounds of butter, or a value of \$450 with butter at 45 cents per pound. A 5-gallon can of cream of an average test with butterfat at 40 cents, will bring \$4.80. Now if this 5-gallon can of cream is tainted with kerosene or gasoline, it will ruin the \$450 churning, and that butter will have to be disposed of at grease prices. You can readily see that there is a large financial loss and the producer pays the bill.

Big Churning Lost.
One of the dairy inspectors happened to be in a cream station in eastern Colorado a short time ago when a producer delivered a 10-gallon can of cream. The producer cautioned the cream station operator to be sure and wash the can thoroughly, as he was going to take home some gasoline in the can. Another inspector reported that he was in a Denver plant and saw a 1,200-pound churning of kerosene butter. It is impossible to thoroughly cleanse a can after it has been filled with oil. You may think you can get it clean in that you can't smell the oil, but it will taint the cream just the same. If we had to use tin cream pitchers, you wouldn't think of using the same pitcher for cream on the table and to fill your kerosene lamp. Using cream cans to haul oil in is not unlawful, but results in a financial loss to the producer if the same can is used for dairy purposes again.—Colorado State Dairy Commission.

Two Important Factors to Get Alfalfa Stand

The two most important factors in getting a good stand of alfalfa are seed bed preparation and the use of pure adapted alfalfa seed, according to Kansas State Agricultural college agronomists. Alfalfa and small grass seeds should be planted in a finely pulverized moist soil, which contains a good supply of available plant food. Preparation should start early in the season, and at this time the seed bed should be put into final condition by frequent working with the disk, set straight, a cultipacker, a drag, or a harrow to firm the subsurface well and to smooth and pulverize the surface soil.

Most of the winter killing of alfalfa last winter and spring, was due to using southern grown, or imported seed, say agronomists who urge the use of only native grown seed free from weeds.

Rye Is Now Recommended for Winter Cow Pasture

Farmers who do not have wheat for fall and winter pasture for dairy cows should sow some rye, say dairymen at the Kansas State Agricultural college. One precaution that must be observed in pasturing dairy cows on rye, especially where milk is sold, is to remove the cows from pasture three or four hours before milking. This precaution will keep the milk from being tainted with the characteristic rye flavor, which is objectionable to some people. The college herd is pastured on rye from seven o'clock in the morning until one o'clock in the afternoon.

Produce Excellent Hay Crop by Sowing Timothy

When timothy is sown alone in the fall it produces an excellent hay crop the following summer, but when sown during late winter or early spring it is necessary to wait until the following year to get a hay crop. Timothy may be sown with either wheat or rye. When sown with a nurse crop from 6 to 8 pounds of seed per acre should be used. When sown alone, about 10 pounds is the proper amount.

Clover, either sweet or red, may be sown with the timothy in the spring.

Double Value of Straw

Farmers imagine when they bale straw and sell it for enough to pay actual cost of baling and hauling that they are getting as much out of it as possible. Are they? Dry straw may not be of great value as fertilizer, but when mixed with fresh manure its worth is more than doubled. More liberal use of bedding results in cleaner and healthier animals, and gives a larger amount of fertilizer.



AVERAGE COW IS NOT GOOD ENOUGH

The average American dairy cow is not good enough, according to Dr. C. W. Larson, chief, United States bureau of dairying. In an address before the National Dairy club at Chicago recently he characterized the greatest need of the dairy industry at this time as not an increase in the number of cows, but a greater production per cow. The average yearly yield of cows in this country is around 4,000 pounds of milk and 150 pounds of butterfat. Through intensive studies made by the bureau it was found that a cow producing this amount of milk and butterfat in one year furnishes an income of \$26 over cost of feed. It was further shown that cows capable of producing 8,000 pounds of milk and 300 pounds of butterfat in a like period returned an income over feed cost of \$74.

The most practical and least expensive way for the average dairyman to increase the profits from his milking herd is through the cow-testing association and the use of a good pure-bred sire. An example of the greater profits possible by careful selection of cows, systematic weighing and testing of milk, proper feeding and the use of a good bull, is shown in the Allen-Kohlsville Cow-Testing association of Wisconsin at the 1924 National Dairy exposition. Ten immature cows in this association, all daughters of the same pure-bred bull, produced an average of 1,483 pounds more milk and 70 pounds more butterfat in one year than did their dams at mature age. The outstanding exhibits of interest to the largest number of dairy farmers at the National Dairy exposition held this year at Indianapolis, October 10 to 17, again are devoted to these lessons. The comprehensive exhibit of the United States bureau of dairying and those of the national breed and state dairy associations and the leading state agricultural colleges will have special application to the good results obtained through cow-testing association work and the pure-bred sire.

Eradicate Tuberculosis in Utah Dairy Section

A noteworthy advance in the nationwide campaign against bovine tuberculosis occurred during June in a new sector. Cache (pronounced Cash) county, Utah, completed a systematic tuberculin test of its 23,000 cattle, which showed less than one-half of 1 per cent infection. This very small extent of the disease, together with the fact that all reactors were removed, won for Cache county a place on the United States Department of Agriculture's list of "modified accredited areas."

It is the first county in Utah to have that distinction, and department officials consider that the leadership of Cache county will stimulate similar activity in other counties of the region. This will greatly advance the progress of systematic tuberculin testing in the West. Such a view is supported by the fact that another county has in the state already applied for a similar intensive test of its cattle. The county commissioners of Summit county voted \$500 toward the work which is now in progress.

A survey of the state indicates that the percentage of tuberculous infection in cattle is less than 1 per cent. This low figure and the growing sentiment in favor of the work give promise of an active state-wide campaign.

Prevent Mold in Butter by Sanitary Measures

Moldy butter, which takes a toll of many thousands of dollars from creameries every year, can be absolutely controlled and prevented, says Harold Macy, bacteriologist for the division of dairy husbandry of the University of Minnesota. He points out that molds are living plants and must be present and alive to do any damage. If they are excluded or destroyed, there will be no moldiness of the butter.

Chief of steps to be taken in excluding molds, says Mr. Macy, are pasteurization of all cream, the emptying, cleaning, and sterilizing of the butter-milk tank every few days, and the use of two sets of cans by farmer patrons of the creamery, one set for transporting cream to the creamery and the other for taking buttermilk back to the farms. Sanitary piping and pumps must, of course, be provided and be kept clean and sterilized. Only pure, low acid starters, made from thoroughly pasteurized milk and pure cultures and kept in sterilized containers, should be used. Paraffin tubs and treated parchment are indispensable. And, finally, the butter should be stored in a cool, clean, dry, and well ventilated room.

Dairy Notes

Cow-testing associations rid herds of pickpockets.

Roughage is not a sufficient feed for good dairy cows, especially if it is somewhat poor in quality.

Grow the cows vigorously twice per day. It will help to prevent fly annoyance and will increase production.

PUBLIC SALE

I will sell at public auction 8 miles northeast of Kendrick, on the J. T. Moser place on Texas ridge, following described property; beginning 10 p.m.

Wednesday, Nov. 4

Horses

- Bay mare, 8 years, weight 1350
- Bay mare, 9 years, weight 1350
- Bay mare, 5 years, weight 1450
- Bay mare, 7 years, weight 1200
- Bay gelding, 4 years, weight 1200

Machinery

- Deering binder, good as new
- New P. & O. riding cultivator
- P. & O. bean planter
- Parker bean planter
- New 3-section drag harrow
- Acme harrow
- 8 foot disc
- 16 inch John Deere walking plow
- New bobsled
- Set light bobs for buggy
- 3 1-4 John Deere wagon
- 13 foot grain rack
- Dunum 3-section land roller
- U. S. 600 lb. platform scales
- One hack
- 2 sets heavy work harness
- Numerous other articles

Cattle

- Red Pole cow, 8 years
- Holstein cow, 8 years
- Holstein heifer, 3 years, fresh this winter
- Red heifer, 3 yrs., fresh in winter
- Jersey cow, 7 years, giving milk
- White face heifer, 3 years old

LUNCH WILL BE SERVED AT NOON

TERMS: All sums of \$20 or under, cash; over that amount bankable note due Oct. 1, 1926, 10 per cent interest.

Melvin Eatman, Owner

N. R. Shepherd
Auctioneer

A. H. Daubenberg
Clerk

Good Stand of Red Clover Is Insured

Failures Uncommon Where Fertilizer Is Used.

Can a good stand of red clover be insured? "Yes," says a soils specialist who has charge of a number of experiment fields in a leading corn-belt state. "In the past five years we have never had a clover failure on our plots where fertilizer has been applied, but we often had failures on the unfertilized plots."

Clover failures are expensive, especially when red clover seed is as high as it is now. The mortality of clover seedlings is high—so high that many farmers have been discouraged in growing clover, although they know it ranks high as a soil improver. Lime and phosphorus are generally the limiting factors that prevent successful clover growing. Acidity of the soil is becoming more and more common. Every year the equivalent of a quarter ton of limestone is lost from each acre in the drainage water. Continued removal of crops has greatly depleted the phosphorus content of many soils. Both lime and fertilizer are important, but liming is often over-emphasized under conditions where lack of available phosphorus is the limiting factor. Some soils, too, need potash in addition to phosphorus. Fertilizer will insure the red clover investment. On the majority of soils fertilizer applied on the grain crop

seeded to clover will pay for itself twice—once in the increased grain yield and again in the clover following.

Way of Burying Cabbage to Prevent Rapid Decay

In planning to bury cabbage to avoid decay first select a well-drained spot and dig a hole about four inches deep, varying in width and length to suit the amount stored. Allow the leaves and roots to remain on the cabbage and without bruising or breaking, place upside down on the ground. Wrap the outer loose leaves closely about each head. The next row is placed on top of the first, between the upturned roots, and this is continued until a pointed pile is made. Over this, soil is placed gradually, adding more as the weather becomes colder. Only solid heads of the late varieties should be stored. The flat varieties are not as good for storage as are the tighter ball-head kinds. Cabbage is not seriously injured by freezing provided it is allowed to thaw out slowly while still buried in the soil.

If the poultry house does not supply protection and comfort, then it will not be a profitable investment.

Do you make a practice of greasing your wagon wheels regularly? A little grease will go a long way in prolonging the life of a wagon.

Flea-beetles, pests that injure corn, potatoes and garden plants, will kill quills when a spray of bordeaux mixture and arsenate of lead comes along.

Won Honor in Death
First Lieut. William T. Fitzmons of the army medical corps was the first officer of the A. E. F. to be killed in the World war.

Money Unclaimed
New York banks hold more than \$5,000,000 in deposits for which there are no claimants.

Socialist of Noble Blood
Peter Krapotkin, the world-famous Russian socialist, sprang from the oldest Russian nobility, was a page at the czar's court and later was chamberlain to the zarina. He was arrested in 1873, but escaped in 1876.

Ecuadorian Industry
The making of straw hats is a principal industry of Ecuador.



CLOSING OUT SALE

We've Got To Quit

Owing to ill health and my doctor ordering me to a hospital for an operation, and believing it will be at least one year before I will be able to attend to business again, if at all, I have decided to close out my entire stock of furniture and house furnishings at prices never before heard of in the Potlatch country, nothing reserved, everything goes, many things at less than cost. I have only a short time to close out and must make the price do it. Come early while the stock is complete. This sale will commence

Saturday, October 31

and ends when all is sold, which should not take more than 10 or 12 days. Below I quote a few prices, regular and close-out, that you may see the saving you can make. Remember also, that this is no fake money making sale. It's genuine. I simply must get out while my physical condition allows me to do so. Thanking you for past patronage,
James Pettet, Proprietor Kendrick Trading Company.

Chairs

	Regular	Close-out
Bow back kitchen chairs	\$1.75	\$1.40
Tee bolt dining chairs	2.90	2.25
Maple diners, fumed finish	3.25	2.60
Maple diners, fumed finish	3.50	2.75
Solid oak diners, fumed finish	4.00	3.10
Solid oak diners, fumed finish	4.75	3.60
Solid oak diners, leather seat	6.50	5.25

Rockers

	Regular	Close-out
Over stuffed, full stock cowhide, hardwood finished in mahogany automobile slip seat	\$36.50	\$29.00
Same, straight back	33.25	26.75
Same, wing back, stationary seat	29.25	22.50
Sewing rockers, regular prices from \$3.50 to \$8.60		close-out prices, \$2.90 to \$6.50

Mattresses

	Regular	Close-out
40 lb. cotton, roll edge, No. 5 tic.	\$10.00	\$ 7.75
45 lb. cotton felt, r. e., No. 6 tic.	14.50	11.25
50 lb. cotton, Imperial, No. 9 tic.	16.50	13.75

Floor Coverings

	Regular	Close-out
Blabons 9x12 Feltex rugs (Cgm.)	\$15.75	\$12.90
Blabons 9x12 printed lino. rug	21.50	16.90
Blabons inlaid linoleum, sq. yd.	1.95	1.58
Blabons " " " "	2.25	1.75
Blabons Feltex congoleum " "	.78	.63
Blabons Feltex, 3 yds wide	.90	.75
Biglow-Hartford Axminster and Velvet rugs 9x12	regular prices \$27.50 to \$45.00,	Close-out prices \$21.00 to \$34.00

Beds

Simmons steel beds, 2 inch continuous post, 7/8 fillers. Vernis-Martin finish, reg. \$11.50 Close-out \$9.25

Springs

Simmons springs, regular \$6.75 to \$18.00, Close-out prices \$5.50 to \$13.75

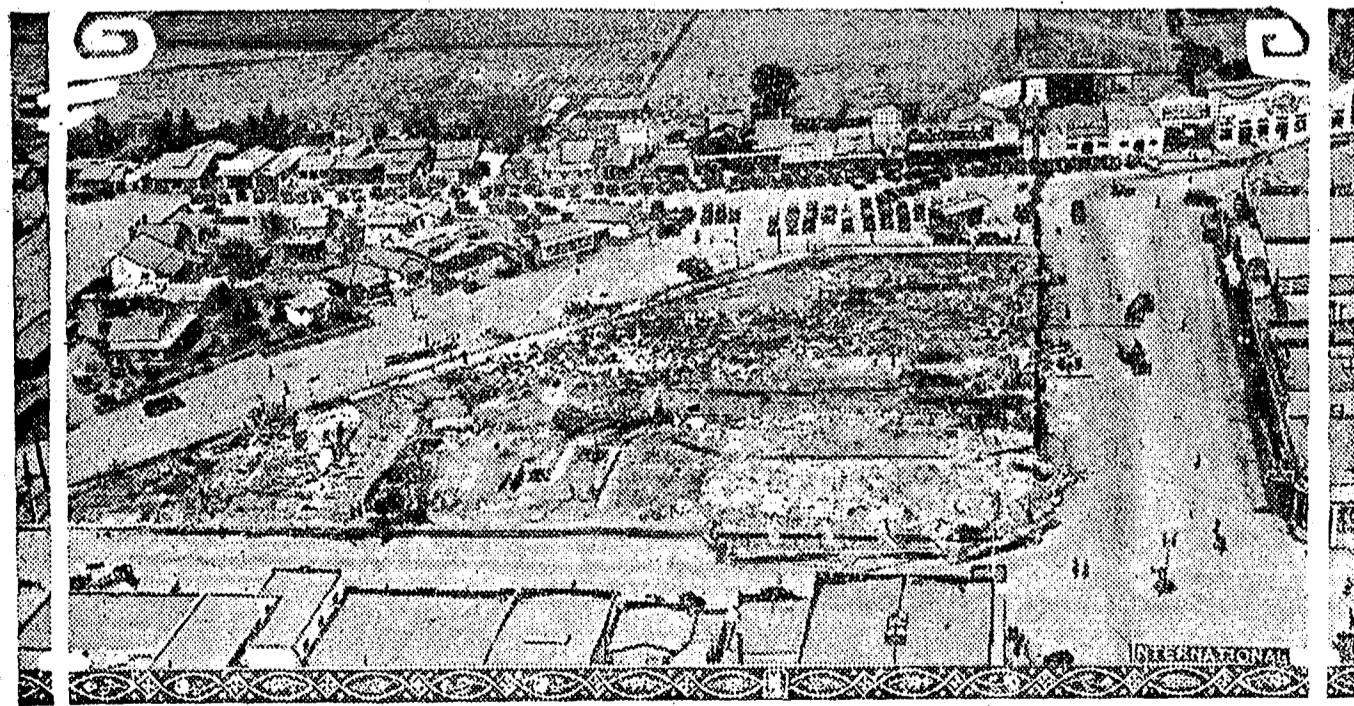
Dressers

Regular prices \$19.50 to \$27.25, Close-out prices \$15.25 to \$21.00

Everything in The Store at Similar Reduction in Price

Kendrick Trading Company

Tia Juana, Mexico, Has a \$1,000,000 Fire



Aerial view of Tia Juana, Mexico, immediately after the recent conflagration in that town familiar to visitors to southern California. The loss was about one million dollars.

Fertilizer Program for Whole Rotation

Increases Fund of Plantfood and Improves Soil.

The soundness of a fertilizer program that considers not only the crop immediately fertilized, but all the

crops in a rotation, is beginning to be recognized. The balance sheet which shows a profit from expenditure for fertilizer is not complete unless it considers the residual effect of fertilizer applications on other crops.

Here is a case in point—in a series of fertilizer tests by the Wisconsin experiment station in southern Wisconsin, \$3.50 worth of fertilizer produced an increase of 8.5 bushels of oats, as an average on 23 farms. If the tests had stopped with the oat

fields, doubtless the returns would not have satisfied some of the fertilizer users. But the following year, clover which followed oats on nine of the farms, yielded 853 pounds more hay per acre where the oats had been fertilized. On 17 farms where alfalfa followed fertilized oats, an increase of 950 pounds of hay per acre was obtained in the first cutting. Yields on the second and third cuttings could not be obtained, but would unquestionably raise the 950 pounds

increase materially.

In a good farming system, such results as the above are carried on to following crops. With the larger crops, more stock can be fed, and more manure produced to return more plantfood to the soil. The net effect of a sound fertilizer practice on general farms is to increase the revolving fund of plantfood, resulting in continued soil improvement.

Feed Dairy Cows Grain for Maximum Production

A good pasture makes a good ration for dairy cows but maximum production cannot be secured on grass alone. Some grain should be fed, the amount depending upon the breed of the cow and the amount of milk she is giving daily. A Jersey giving 20 pounds of milk a day should have 3 pounds of grain in addition to the pasture while one giving 40 pounds a day should have 10 pounds of grain. A Holstein giving 35 pounds of milk should have 3 pounds of grain, while one giving 50 pounds of milk should have 10 pounds of grain.

FARM NOTES

Early molters are poor producers and late molters are good producers.

Weeds absorb water. The moral: Kill the weeds and save the water for the corn.

Watch the garden for unwelcome insect visitors. A bug in time saves nine—and the garden sass.

POULTRY

COST OF RATION IS BIGGEST ITEM

A very important factor in any ration is the matter of cost. The best ration is one that will give the largest returns, cost considered. This does not mean the largest returns or the cheapest ration. The biggest income may be secured from a ration that is so high in price that it is impracticable to use, while the cheapest ration might bring about such low production as to make it unprofitable.

From the farm poultryman's standpoint the question of feeding is largely a question of economically supplementing the home-grown feeds. Two general types of feeds come under this classification: Those that are supplied to the fowls and those the fowls pick up by ranging over the farm.

In the majority of cases there are two problems: One, the supplying of protein or flesh-forming foods, and the other of giving the proper variety to the ration. This is more particularly true when the fowls are confined than when they are picking up considerable of their feed by foraging over the farm. When foraging they eat more scratch feed and less mash than will properly balance up their ration if they are allowed to choose as they may. Therefore, they must be encouraged to eat the mash by making it as attractive as possible and also by limiting the amount of the scratch feeds which are supplied, especially during the morning feeds.

The cost of the ration is the biggest item of expense in poultry production. The greatest opportunity for a saving lies in the feeding. The big item that the majority of people need to pay more attention to is that of balancing up the food by the use of some of the animal proteins and supplying additional variety. Too much scratch grain and not enough mash to properly balance the ration is the mistake made by many flock owners.

Market All Fowls That

Molt Early in Autumn

"Most hens stop laying when they begin to molt," says E. L. Dakan of the poultry department at Ohio State university. "A hen must be a consistent layer to make a high record, and an early molting hen is not a consistent layer."

"The time of the molt is the best indication of the past year's performance. This rule can be used in culling all breeds and varieties, but is of special importance with such breeds as the Orpingtons and Minorcas that do not have the yellow skin."

"The hen that molts early, under normal conditions, will not lay as many winter eggs as the hen that molts late. Neither will she begin egg production earlier in the spring. No definite date can be set as to early molt, but as a general rule the first hens in the flock to molt should be sold, and the last to molt should be kept for breeding purposes."

"Hens may be thrown into an early molt by starving while laying heavily, by irregular feeding, by roosting in a house that is poorly ventilated, or by anything which tends to check egg production."

Fattening on Range

Some feeders have tried confining the turkeys while they are being fattened, but with little success. When confined to a pen, they may eat heartily for a few days but afterwards lose their appetites and then begin to lose flesh. A certain amount of liberty and range is necessary to keep them hungry and in good, healthy condition. Where this is combined with a good feeding ground, as is the case when they are allowed to run in a cornfield that has been hogged off, results are more than likely to be gratifying.

Poultry Hints

Ducks or geese will eat all the grit they require without putting it in their feed.

Turkeys should not be fed at first. Growth should come first and fattening should not begin until in November if the birds are to be wanted for the Thanksgiving market.

A novel and easy way to make wet mash is to pour a little milk in the mash hopper at noon. Just enough liquid should be used to moisten what the birds will clean up.

Make a bred-to-lay hen's home life happy and comfortable with proper housing and feeding, as well as the other surroundings, and she will try to do the nest justice and let you enjoy the profits therefrom.

Only a laying hen is worthy of her feed.

Whether or not it pays to raise capons depends very much upon the market. People who eat capons are very particular people and birds not only have to be well raised, but well finished.

Green feed increases the fertility and hatchability of eggs. It has been found. Hens should have access to pasture, or be fed silage, sprouted oats or some other good green feed

Farm Birds Eat Numerous Pests

Feathered Tribe Feast on Insects of Many Kinds and Many Weeds.

The economic value of birds, especially insectivorous birds in farm districts, cannot be too strongly emphasized, in the opinion of the biological survey of the United States Department of Agriculture. For this reason the bureau is interested not only in the protection of migratory game birds, which is one of its important functions.

Hardly an agricultural pest exists but has numerous effective bird enemies. For instance, 25 kinds of birds are known to feed upon the clover weevil, and a like number upon the potato beetle, 35 on the codling moth, 46 on the gipsy moth, 49 on horseflies, 67 on bill-bugs, 85 on clover-root borers, 98 on cutworms, 120 on leaf hoppers, and 168 on wireworms.

Also Eat Weed Seeds.

Birds benefit the farmer also by eating quantities of weed seeds. It has been estimated that a single species of sparrow in a single state—Iowa—consumed annually 875 tons of weed seeds. Birds do not, of course, especially single out the noxious seeds or an insect pest for food; but, eating indiscriminately and voraciously, the most abundant food is taken first, and this is likely to be the moving caterpillar or adult insect, or the seeds on the plant or on the ground, where they have been carried by the wind. Many species of birds perform another important service to man through their feeding habits, since they act as scavengers. In districts where the disposal of waste is not completely taken care of by community and individual effort, birds make a valuable contribution to public health.

Next to man himself, wantonly using his gun, the worst enemy of farm birds is the domestic cat. Storms also destroy a great many birds by cutting off their food supply. Protection against the elements cannot often be provided for birds except where refuges or sanctuaries are maintained for them, but a protective public sentiment, supported by effective laws, will lessen the damage done by man and domestic animals. Birds may be still further encouraged and increased by the provision of food trees, such as the mulberry, which will serve the double purpose of attracting them away from cherry or other fruit trees and supplying them with suitable food.

Bursting of Cabbage Is

Very Easily Prevented

The bursting of growing cabbage may be prevented very easily by selecting the heads which show signs of bursting and starting the roots by pulling, or cutting off some of the roots with a hoe. The pulling process is preferable. Putting both hands under the head, pull until many of the roots are loosened and the plant is pushed over to one side. This treatment effectually stops the bursting, and not only that, but the cabbage continues to grow lustily, and one has the gratification of seeing the heads thus treated grow to greater size and weight, and all due to this starting the roots, which checks the growth enough to prevent bursting, but does not hinder further development.

Black Again Popular for Daytime Wear



Coat of black satin, having circular skirt and black fox border and collar. Posed by Louise Dresser, star of Universal's production of "The Goose Woman."

GLEANINGS

Mrs. Silvie Cook returned home Saturday afternoon after spending a few days with her mother at Agatha.

Mr. and Mrs. Robert Spencer and little son of Moscow spent the week end at the home of Mr. and Mrs. George Leith.

Mrs. N. E. Ware and her sister Mrs. Annie Oylear of Moscow, were in Lewiston on business, Monday.

Ed. Halseth of Bear ridge left Saturday afternoon for Dutton, Montana, to look after land interests there.

Herbet LaHatt left Monday morning for New York City where he expects to take up architectural drafting and designing. He went from here to Seattle where he expected to take the boat from there by way of the Panama Canal to New York.

Frank Bencoter returned Monday afternoon from Lewiston where he spent the past week with relatives.

Mrs. F. A. Varo and little son of Leavenworth, Wash., who have been visiting at the home of her parents, Mr. and Mrs. N. B. Long, for the past two weeks, left Saturday for their home.

Miss Josephine Deobald, who has been visiting relatives here for the past two months, returned to her home at Denver, Col., Monday afternoon.

Tom Blévins was in Pullman Saturday on business.

Percy Ware was a passenger to Troy Monday afternoon.

Mrs. Warney May of American ridge was a Moscow visitor Saturday.

Burl Emmett was a Moscow visitor Tuesday morning.

Our idea of an optimist is a lady who places a special delivery stamp on a letter and then hands it to a busy husband to mail.

Upon learning that the divorced wife of Henry Bleck had remarried, Judge Miles S. Johnson of Lewiston, Monday relieved Mr. Bleck from any payments whatsoever in the proceedings instituted against him for support money. Mrs. Smith, formerly Mrs. Bleck, was given custody of the minor child.

A pint of liquor, an auto and another man's wife make up a combination that is always good for either an editorial or an obituary notice. — Roanoke Times.

Mr. and Mrs. Clifford Davidson left Wednesday morning for Placerville, California, where they intend to make their home. A carload of household furniture and livestock was shipped Tuesday afternoon. Cliff expects to conduct a stock ranch there and has already rented a place near Placerville for that purpose. Their many friends in this community regret to see them leave but all wish them success in their new home.

Mr. and Mrs. H.P. Hull were passengers to Lewiston, Thursday afternoon on business.

The United States District Court which was to convene Monday, November has been adjourned until Friday, November 6, at 1 p. m.

G. F. Walker was transacting business in Moscow, yesterday.

Mr. and Mrs. Fred Kidwell and son, of Kelso, Wash. are visiting at the home of Mrs. Kidwell's parents, Mr. and Mrs. E. E. McDowell.

A baby girl was born to Mr. and Mrs. Lloyd Cook, of Lenore, Sunday, October 25. Mrs. Cook will be remembered here as Miss Muriel Onstott.

Halvor Nelson of Farmington, Wash., was transacting business in Kendrick, Wednesday of this week.

Word was received here Wednesday by Mrs. Ching Thomas, stating that her daughter, Opal, was in a Spokane hospital and was in a very critical condition. She is under the care of Dr. Hoyt who stated that it may be necessary to operate in order to save her life.

A marriage license was issued at Lewiston, Tuesday, to Elgin Lawrence of Southwick and Sarah Reiche of Crescent.

Canyon Post No. 66, American Legion will give a dance at the Fraternal Temple, tonight. It is expected that a very large crowd will attend. Chpse's Tempo Teasers of Lewiston will furnish the music for the occasion.

A very pleasant evening was spent at the Fraternal Temple, Tuesday night when the members of the Eastern Star invited other members of their families to meet with them after their regular business meeting was concluded. Refreshments consisting of salad, sandwiches, cake and coffee were served.

And, Mary, thinking of advertising slogans—if an apple a day will keep the doctor away what might an onion be expected to do if given a fair chance?

Slind Will Is Filed

The will of John J. Slind, with a petition for probate, was filed in the probate court Tuesday, according to Judge Adrian Nelson. Mr. Slind died October 15, leaving an estate amounting to approximately \$14,000. Surviving are his widow and twelve children. Mrs. Slind will receive the bulk of the estate while seven of the children are to receive \$20 each, three of them \$10 each, and the remaining two will receive the mother's estate when she passes, according to the will.

Idaho Auto Accidents

In Idaho thirteen people died as a result of automobile accidents during the month of October, according to the report issued by the bureau of vital statistics. The total deaths in the state from all causes during the month numbered 335, of which seventy-nine were under one year of age and 126 over fifty-five years.

Storm Claims 7,000 Persons

Karachi, British India, Oct. 26—Brief details of the disaster caused by a cyclone storm in the Persian gulf confirm the early reports of great loss of life and the destruction of many small vessels.

Dispatches to the Daily Gazette say that 7,000 persons perished in the cyclone which was accompanied by an earthquake and other disturbances.

The pearl fishing fleet was almost entirely swept out of existence, more than 200 boats being sunk. British naval vessels suffered minor damage, such as the loss of boats.

The islands of Tamb and Henjam were severely shaken, and many acres of date palms at Basra were devastated.

Lodge stationery attractively printed at the Gazette office. tf

Craigmont Stores Robbed

Craigmont, Oct. 25—sometime after midnight Sunday, burglars entered the Scott Mercantile company and the Gray Motor company, both of this place, and carried goods valued at several hundred dollars away. Sheriff A. W. Mitchell arrived on the scene early from Nezperce and spent the day in making examinations that might furnish a clew to the burglars but at a late hour this afternoon nothing had developed that would assist the officers in any way.

At both places entrance was gained through a back window. Fresh car tracts were plainly to be seen close to each of the places robbed. It started to rain about midnight and the tracts in the road show that it was while the ground was wet that the car parked, it being naturally presumed that the machine was driven by the burglars.

Ended His Own Life

Alonzo Clifford, age 69 or 70 ended his own life last Friday noon by shooting himself just below the heart with a 16-gauge shotgun. He tied the stock of the gun to a standard of a sled in the yard and pushed the trigger with his cane. He was living in a cabin on the Frank Benda place on Deer creek six miles east of Orofino.

It appears that he had contemplated the deed for some time and worked hard for the past seven months to get his affairs in shape. He had been crippled for some months, since breaking his hip last winter, and was despondent. He paid up all his debts, so it is reported, and had told Mrs. Griffin, a neighbor, that he had discovered a cure for his trouble, which he intended to take as soon as his wood was delivered. He had also remarked to several that he would be better off dead.

Little is known of Mr. Clifford's past wife. He came here about 21 years ago and has lived in the same neighborhood since then. He was reticent about his past and has no known relatives. He was formerly a miner and had lived at Duluth.—Clearwater Tribune.

Refused High Rank

La Tour D'Auvergne, French soldier, refused the rank of general offered him by Napoleon and preferred the title given him by Napoleon, "the first grenadier of the republic." He was killed in 1800.

News Notes From Kendrick School

Written for the Gazette by Student Correspondent

The debate held at the high school auditorium last Friday proved to be very interesting. The negative team of the Kendrick high school won from the affirmative from Troy. The affirmative of Kendrick went to Troy to debate the negative side and were defeated by one point. The debating class will continue through the year and later will challenge some near-by school.

A very good orchestra class has been started in high school. This will be a great benefit to the school this year. Those playing instruments in the class are: Ernestine Callison, Maude Compton, Donald Broeke, Herbert Schwartz and Elbert Long. Mr. Kerns is director.

The basket ball teams are planning their schedule for this year. Some very interesting games are to be played here. A full schedule will be published later.

The sixth grade language class has composed some very interesting and unusual poems this week.

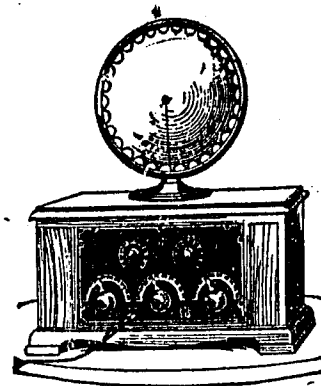
Completing Fraternity Home

Exterior work on the new \$60,000 home of Phi Gamma Delta, national social fraternity at the university of Idaho is rapidly nearing completion. Actual moving in will probably not be accomplished, however, until after the Christmas holidays because of additional work to be done on the interior.

Approximately 40 men will be accommodated in the new home. Special features of design and construction include "spiral" chimneys, steel casements for all windows, antique leaded glass in lower front windows, and special clay shingles. The brick was specially ordered and was laid in peculiar "Dutch bond" style which gives a criss cross parallel effect.

If You Can

After finding a gas leak with the use of a match the next thing is to find the house.—Toledo Blade.



DeForest Radio Sets

The only proper way to buy a Radio set is by comparison. There are so many different makes of radio sets, and as each company makes particular claims for their own set the public cannot, without a home demonstration, determine which is the best.

Let us bring a DeForest set to your home and compare it with and 5 tube set regardless of price. You will at once notice the better quality of tone and not that loud blasting noise which is the fault with most 5 tube sets.

We invite you to come and listen to the radio programs any evening from 5 to 10.

Remember this, DeForest is the inventor of the vacuum tube. He is the man who made possible radio reception in the home, and it is only reasonable to expect that a man of his exceptional mentality is not going to put a receiving set on the market unless it is one of the best.

Let us demonstrate at your home.



The

Red Cross Pharmacy

Kendrick, Idaho

Kendrick Barber Shop

BATHS

Agency for Moscow Steam Laundry

All kinds of cleaning and pressing.

SILVIE COOK

WANTED

Cattle, hogs and sheep

Hides and Wool.

Call

Holbrook & Emmett

Tonight and Saturday

A Real Thrilling Picture



"LET'S GO"

Featuring Richard Talmadge, Eileen Percy, Tully Marshall

From one daring stunt to another—this thrilling picture weaves its way through a thread of delightful romance—with a laugh for every title!

GUESTS

Tonight, Oct. 30 - Geo. McClintic
Saturday, Oct. 31 - Ed. Galloway

The above mentioned gentlemen will receive 2 tickets each

Children Under 12 years 10c - Adults 35c

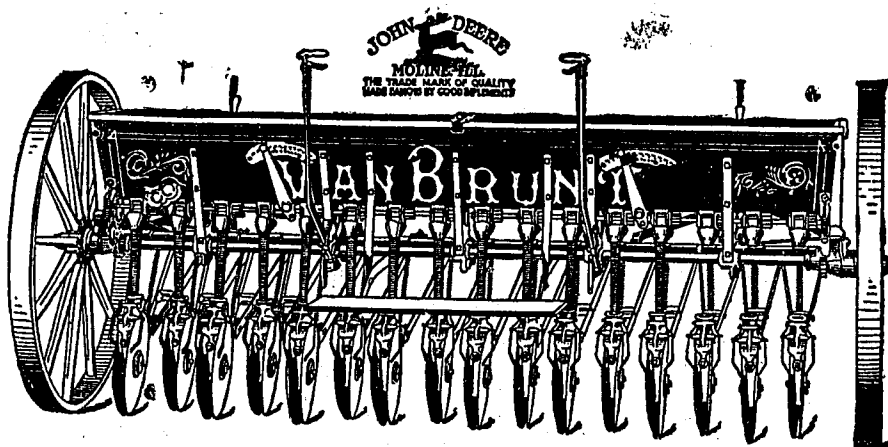
The New Kendrick

O. E. MacPherson, Manager

JOHN DEERE

The Trade Mark of Quality

Made Famous by Good Implements



A full line of farming machinery sold under an unconditional warranty. John Deere products must be the best that giant resources and mechanical skill can make them.

The Van Brunt Grain Drill

The drill with the many exclusive features.

80 per cent of grain drills sold in the Spokane territory is said to be Van Brunt. There is a reason. INDESTRUCTIBLE DISC BEARINGS. Guaranteed for life. Bearings do not work loose or wobble. Light weight and light draft, but built strong and durable. Sooner or later you will buy a Van Brunt Drill, why not now?

John Deere Gang Plows

The John Deere all steel gang was built and designed for the conditions prevailing on the Pacific coast. The plow with the unconditionally guaranteed beams. The plow that always scours. The plow with the light draft and easy to manage.

The Strongest Plow of Its Type

Yes, we have them in stock.

See us for DeLaval Cream Separators. We will be glad to show you the new "Floating Bowl".



The

Carlson Hardware Company



THE WINCHESTER STORE