





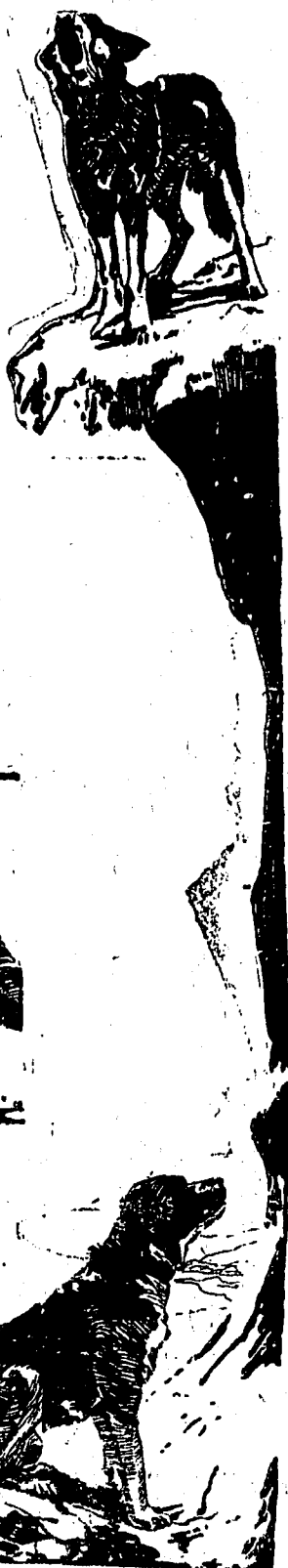
# TONIGHT and SATURDAY "Call of the Wild"

from the famous dog story by  
**JACK LONDON**

A Great Literary Achievement!  
A Greater Screen Masterpiece!

A stirring tale of the Yukon trail,  
when dogs were human and some  
human dogs.

If you loved the book you'll rave about this photoplay.  
You'll thrill at the adventure and action.



The Sensational Super-Feature.

Show starts at 8 o'clock sharp

Admission Prices 25c and 50c

**The New Kendrick**

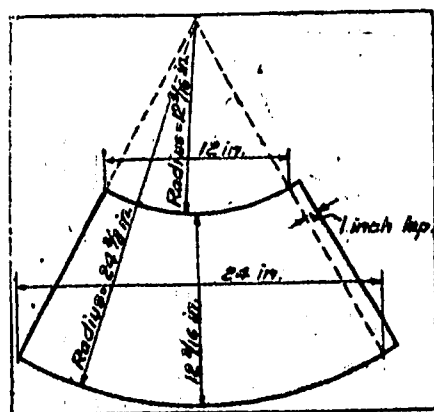
O. E. MacPherson, Manager

## Concrete Mixed With Accuracy

Strength of Material Is Determined by Amount of Water Employed.

Few persons realize, perhaps, how great an effect a difference in the proportion of water can have in the mixing of concrete. There are many who do not realize that for each pint of unnecessary water added to a concrete mixture the strength of the finished concrete may be decreased as much as 7 two pounds of portland cement had been left out.

The best concrete mixture is that which is as stiff as can be mixed conveniently. Even this will not be of the maximum strength which could be



Slump Test Cone.

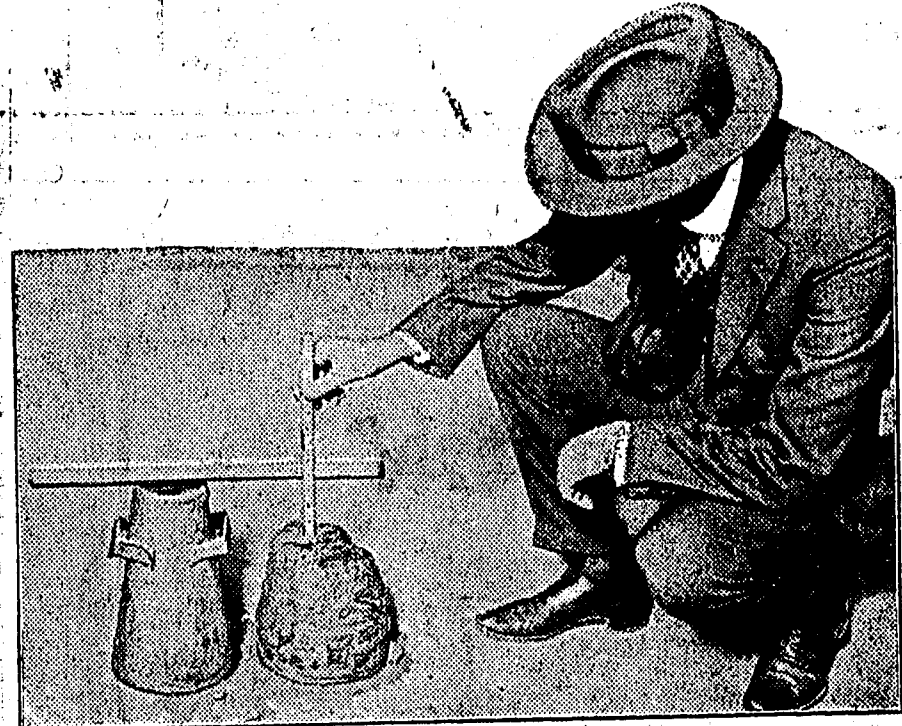
obtained, but a mixture of maximum strength would not be practicable for general construction purposes, as it would be too stiff to be worked. But a mixture of the stiffest consistency that can be worked will give 70 to 90 per cent of the maximum strength.

The following table shows how too much or too little water detracts from the strength of concrete by wasting the strength of the cement:

|     |                         |     |                        |
|-----|-------------------------|-----|------------------------|
| 10% | too little water wastes | 37% | of the cement strength |
| 6%  | " "                     | 10% | " "                    |
| 7%  | " much "                | 10% | " "                    |
| 12% | " "                     | 20% | " "                    |
| 18% | " "                     | 30% | " "                    |
| 25% | " "                     | 40% | " "                    |
| 31% | " "                     | 50% | " "                    |
| 42% | " "                     | 60% | " "                    |
| 63% | " "                     | 70% | " "                    |
| 80% | " "                     | 70% | " "                    |

The right amount of water for cement mixtures of varying strengths is shown in the following table:

| Cement | Sand             | Gravel           | Water Per      |
|--------|------------------|------------------|----------------|
| 1 sack | 1 1/2 cubic feet | 2 1/2 cubic feet | Sack of Cement |
| 1      | 1 1/4            | 2                | 5 1/2 "        |
| 1      | 1 1/2            | 2 1/2            | 5 1/2 "        |
| 1      | 2                | 3                | 6 "            |
| 1      | 2 1/2            | 3 1/2            | 7 1/2 "        |
| 1      | 3                | 4                | 8 "            |



Using the Cone in Making the Slump Test.

## Federal Grades for Alfalfa Suggested

Department of Agriculture  
Plans Are Outlined.

(Prepared by the United States Department of Agriculture.)

Federal grades for alfalfa are contemplated in investigational work now being done by the United States Department of Agriculture. Preliminary studies in co-operation with state experiment stations the past few months have included the collating of all data obtainable on the relative weight and feeding value of leaves and stems, relative feeding value of different cuttings at various stages of maturity, losses due to leaching, mechanical losses incurred in curing and the results of feeding experiments with stack sweated and stack burned alfalfa. Studies have also been made of the relative importance of alfalfa production in different parts of the United States and of the volume of receipts in various markets.

A number of bales of alfalfa hay have been obtained at various points in the West by the Kansas City office of the hay, feed and seed division of the department, and forwarded to the department's hay laboratory at Washington. Detailed studies of these bales are being made to determine statistical facts regarding color, texture, leafiness and foreign material as grading factors.

During the coming summer representatives of the department will visit the principal alfalfa markets and producing areas to make a thorough survey of existing grades and marketing practices to secure additional samples. Persons interested in the grading of alfalfa, and who have constructive suggestions to offer, are invited to correspond with the Bureau of Agricultural Economics, United States Department of Agriculture, Washington, D. C.

Mass concrete, such as is used for heavy foundation work, should not slump to exceed 2 inches. Reinforced concrete such as walls should not slump more than 6 inches; concrete roads when finished by hand should not have more than a 4-inch slump, while cement mortar for floor finishes should not have a greater slump than 2 inches.

### Applying Slump Test.

To apply the slump test, estimate the minimum slump that you can use and still obtain the necessary consistency in the concrete. Test the batches frequently to check the slump and increase or decrease the quantity of water accordingly.

Consistency of concrete mixtures is easily measured and regulated by the slump test.

The only apparatus needed in making the slump test is a 1/2-inch pointed metal rod 21 inches long and a piece of sheet metal for a form, rolled into the shape of the frustum of a cone as shown in the accompanying diagram. The form can be cut from a piece of metal 15 inches wide, 26 inches long, and not less than 20 gauge. When finished it will be 12 inches high, 4 inches in diameter at the top and 8 inches in diameter at the bottom.

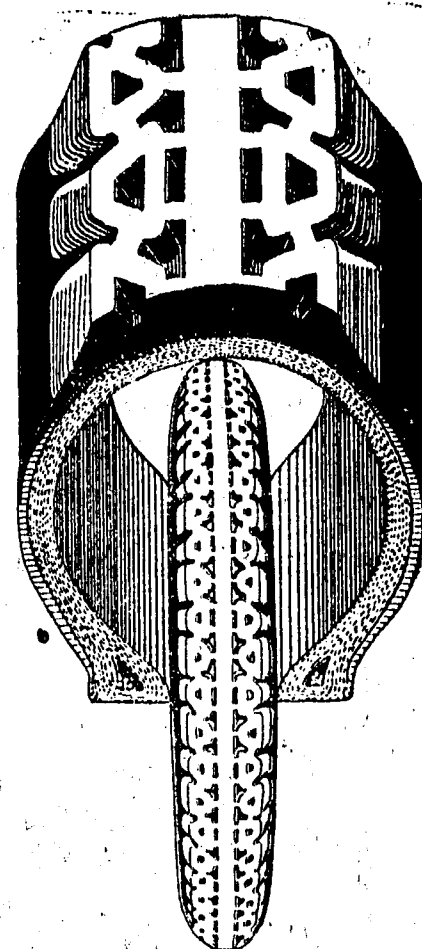
Fill this form with the concrete to be tested, placing it in layers about 4 inches deep and working it with the pointed metal rod. Each layer should be rodded exactly 30 times. Lift off the form immediately and measure the settlement or slump of the concrete.

Concrete having a slump of 1/4 inch will contain only a little more water than necessary for maximum strength, but will be too stiff for most construction work. Concrete containing 10 per cent more water than is required for greatest strength will give a slump of 3 to 4 inches; 25 per cent excess water gives a slump of 6 to 7 inches; 50 per cent excess water gives a slump of 8 to 10 inches.

## UNCLE HANK



One of the purposes of a husband is to prompt his wife when she attempts to tell a funny story.

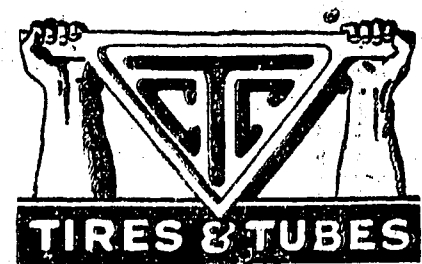


## Stronger Tires

Without the strength of carcass, tread and sidewalls wherein would you expect maximum tire mileage under all road conditions?

In addition to the better materials, expert hand-craftsmanship and improved compounding in these big oversize C-T-C low inflation cords—there is a heavier and stronger body to withstand the road shocks. There is also a C-T-C hand-built Balloon tire for extreme low inflation, which fits any standard wheel and rim. C-T-C Tubes add mileage to almost any casing.

Kendrick Garage Co.

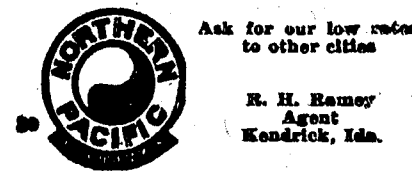


## Chicago Round Trip

Only \$81

from Kendrick

May 22 to September 15



Ask for our low rates to other cities

H. H. Ramsey  
Agent  
Kendrick, Idaho

## McDowell's Commercial Hotel

Breakfast 7 to 9:30

Dinner 11:30 to 2:30

Lunches 30c

Supper 5:30 to 8. Lunches 30c

Our dinners are still at popular prices.

Sunday Chicken Dinner 50c

Try a bowl of soup.

## G. F. Walker

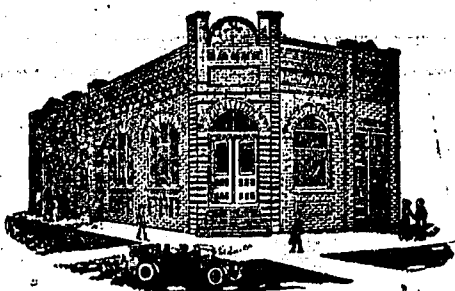
Real Estate

And

Insurance

Kendrick, Idaho

## Service and Security



4 Per Cent Paid on Savings and  
Time Deposits

## BANKING JUDGMENT

This bank has been building both its own reputation and the business reputation of this community by strict adherence to the best principles and ideals of modern banking. The prestige of this reputation is shared by our depositors.

You are invited to open a checking account with this strong bank, and profit through the seasoned judgment, experience, dependability and complete knowledge of banking that is offered as a part of our service.

"Try Kendrick First"

## The Kendrick State Bank

Martin V. Thomas,  
President

K. D. Ingle,  
Vice-Pres.

A. H. Daubenberg, Cashier

Kendrick, Idaho

## Clover Failure Is Due to Many Causes

Ailments of Crop Discussed  
in Bulletin Just Issued.

(Prepared by the United States Department of Agriculture.)

That the decline in red-clover culture is no myth becomes abundantly evident when one reads the agricultural literature of the past 40 years. Letters from farmers to the agricultural press and articles by farmers and by the experiment station workers in the press all express concern regarding this condition and offer various reasons and remedies. The United States Department of Agriculture has been alive to the necessity of solving the problem of clover failure, and has set forth its observations as to the causes as well as suggestions for more favorable results, in Farmers' Bulletin 1305, Clover Failure, just issued.

Causes of clover failure, says the department, are to be sought in improper soil conditions, in diseases, in the use of nonadaptable seed or in improper methods of seeding, and in the use of harmful nurse crops. Improper soil conditions result from constant cultivation and the consequent loss of lime, phosphates, potash and organic matter, making the soil unsuited to the growth of clover. Such conditions can be remedied by applying the elements lacking in a field and by working in manure and other forms of organic matter.

In some cases clover failure is due to diseases, and then a disease-resistant variety must be used if available, or some other legume substituted for red clover. Alsike clover, hairy vetch or annual summer legumes, such as soy beans, should be used when for any reason land that needs lime cannot be economically limed. When red clover fails on land well supplied with lime, sweet clover can often be substituted to advantage.

A copy of the bulletin may be secured as long as the supply lasts, from the United States Department of Agriculture, Washington, D. C.

**Human Race Uncontrollable.**  
Human race will be what the weather will be: Quite uncontrollable in its development. Its course was fixed when it was created.

**Exaggerated Idea of Scenery.**  
A railroad traveler who wants to raise the car window and poke his head out has an exaggerated notion of the scenery to be seen.

**Art of Lacquer Work.**  
While the art of lacquer work was first known to the Chinese and taught by them to the Japanese, this latter nation has so far excelled all others that authorities have said that lacquer in all its uses and decorations is a truly Japanese belonging.

**Gold Beating an Ancient Art.**  
Gold beating is one of the most ancient arts in the world, having been known to the early Romans, Greeks and Egyptians. Although powerful machinery is used for gold beating in these days, the final process is still done by hand, as it was centuries ago.



**CHOCOLATE DOUGHNUTS**

- 2 tablespoons Amaizo
- 2/3 cup sugar
- 1/2 teaspoon salt
- 1/2 teaspoon nutmeg
- 1/2 teaspoon vanilla extract
- 2 oz. (2 squares) melted chocolate or 6 tablespoons cocoa
- 1 cup milk
- 3 cups flour
- 3 teaspoons Royal Baking Powder

Mix the Amaizo and sugar together; add the salt, nutmeg, vanilla and melted chocolate (cooled); then add the milk. Add the flour and baking powder which have been sifted together; roll out on slightly floured board 1/4 inch thick. Cut out and fry to a light brown in deep Amaizo hot enough to brown a piece of bread in 60 seconds (375° F.). Drain well and sprinkle with powdered sugar just before serving. Makes 2 dozen doughnuts.

**Y**OU pour exactly the right amount of Amaizo into the frying pan or the measuring spoon—you don't dig a chunk from its container, then wait for it to melt, or mash it into a measure.

Amaizo fries quickly, evenly, beautifully. It does not smoke at cooking temperature. It does not carry the flavor of one food to another, so it may be used over and over. It may even be used for shortening after having been used for frying.

There is real economy in cooking and frying with

**AMAIZO OIL**

Send for the free Amaizo Cook Book. Address: 111 West Monroe Street, Chicago, Ill.

American Maize-Products Company  
New York Chicago



**Little Nema Big Problem on Farm**

**Attacks Different Plants, Doing Most Damage in Light, Sandy Soils.**

(Prepared by the United States Department of Agriculture.)

If all the substance of the earth and of the things that flourish on it, with the exception of the threadlike organisms known as nemas, could by a stroke of magic be made invisible, it would still be possible to distinguish the soil-covered parts of the earth, the streams, lakes and oceans, the insects, animals, birds, fishes, plants, and humans. So widespread and abundant are these nemas, largely parasitic or predaceous, that in this imagined world of transparencies, most living things, the blanket of soil on mountains, hills, and plains, and the bodies of water, would be indicated by clouds of these living threads which vary in length from a small fraction of an inch to several feet, and in diameter from that of the finest of hairs to the thickness of a lead pencil.

With this fanciful picture Dr. N. A. Cobb, plant pathologist and nematologist of the United States Department of Agriculture, one of the leading authorities of the world on nematodes, calls attention to the abundance of these organisms which are of untold economic importance to agriculture and to medicine. Certain species of them are responsible for crop diseases which cut our food-producing capacity to an extent, which, if it could be measured, would be startling and discouraging. One species, the gall nema, attacks about five hundred different kinds of plants, making galls or knots on the roots which frequently prevent the plant from producing a profitable crop. Very few plants are free from



Root-Knot on Tomato Plant, Produced by the Gall Nema.

such attack, not even weeds which are often thought to be blessed with immunity from enemies; but the grasses including the small grains and corn, are less subject to devastation than most of the others. By using these resistant crops in a rotation, it is possible to keep down the number of the pests in the soil as the nematodes will die out in large numbers if a crop, undesirable from their standpoint, is grown on the ground for a year or two. It is necessary, however, to keep down the weeds, because the nemas live in the roots of a large number of them. Even a weed that is not badly infested will carry over the infection from year to year, and it does not take long for a few of the pests to repopulate the soil when a susceptible crop is growing in it. Allowing two months to each generation, which is ample, a pair of gall nemas will have five to ten million descendants in six months, should all survive.

These root-knot producers do the most damage in a light, sandy soil, as it is easier for them to make their way through it from root to root and they are moved about more readily by the flow of soil water. In real heavy clay soils the pest is sometimes of little importance, though it may exist there. Sometimes it becomes worse when a soil is lightened up by adding manure or by opening it with green crops turned under and by thorough cultivation.

**Attacks Variety of Crops.**  
Among the many crops attacked by the root-knot nematode, the most important are alfalfa, clover, cotton, cow peas (with the exception of a few varieties), field peas, flax, fig, grape, peach, soy beans (with the exception of the Laredo variety), pumpkins, sugar beets, sugar cane, sweet potatoes, tobacco, vetch, a large number of truck crops, ornamental plants and trees. Some of the plants attacked are legumes which normally have nodules produced by beneficial bacteria; but usually it is not difficult to distinguish between these growths and those thickenings on the roots made by the gall nematode. The former are more or less globular and easily removed, while the latter are usually club-shaped or irregular masses, really enlargements of the roots and rootlets themselves.

When the soil freezes large numbers of the nematodes are killed off and, as a consequence, the pest is not so bad in the northern states as in the southern. However, enough of the organisms get down below the frost line so that they never are annihilated. In greenhouses they become bad pests in any part of the country, but by treating the soil with hot water or steam it is possible to destroy them along with fungi and many undesirable bacteria. It is now recommended that new greenhouses be construct-

ed in the first place with tile or pipes in the beds with a view to steaming.

Although nemas exist in enormous numbers and kinds in the soil and are of great importance in crop production, there are important species which infest different animals, insects and man. The hookworm is a nema, and there is one infesting fox which is blood red in color and attains a length of several feet. Investigations are being made by the department to learn if these parasites can be used to combat certain insects of economic importance. It has been found that a certain nema has a predilection for grasshoppers, and Doctor Cobb is of the opinion that it is this enemy, in some cases, which causes the "hopper" scourge to rise and subside in great waves. This nema, which attains a length of 20 inches or more and is about the thickness of a coarse thread, makes the host insect sterile, and in that way reduces the increase enormously. When the "hoppers" become plentiful the parasites increase and cut down their numbers; then through lack of grasshoppers the nemas decrease, and the cycle repeats. Investigators are now trying to find out if it will be practicable to introduce this particular nema in regions where the "hoppers" are not infested, and in that way help protect the crops.

**Have Economic Possibilities.**  
There are many other possibilities for utilizing these natural enemies in the interest of the farmer. There is a nema parasite infesting the cucumber beetle and a study is being made of the problem of introducing them in localities where this beetle is abundant and not already badly infested. Practically all the injurious insects, and the beneficial ones as well, are thought to have their nemas, and it is possible that some day these parasites will be used for our benefit just as insect parasites of insects are now being used in efforts to control such economic pests as the Japanese beetle, the European corn borer and various caterpillars.

In the soil and in water there are nemas which prey on other species of their own kind and it is thought possible that some day we may be able to increase the numbers of those predatory nemas which prey on the economically destructive ones. This field of nematology is one which it is thought may be cultivated with a great deal of promise for the farmer. It is certain that much more work must be done in the control of those that are reducing the yield of crops, particularly that widespread one which produces root-knot on so many valuable plants.

**FARM FACTS**

- Seed time is here.
- Reforestation today is preparation for tomorrow.
- The first essential for success with red clover is: Good northern grown seed.
- High-priced seed is not always good seed, but low-priced seed can never be good seed.
- Wise Nature meant leaves and other vegetation to decay and enrich the soil. Why be foolish and burn it?

**Professional Cards**

**Dr. William T. Seeley**  
Physician and Surgeon  
Kendrick, Idaho

**Dr. Geo. W. McKeever**  
DENTAL SURGEON  
Phone 812  
Kendrick, Idaho

**Dr. Jesse H. Burgess**  
Your eyes given a thorough scientific EXAMINATION FREE  
Glasses guaranteed to fit and recommended only if absolutely necessary.  
Steele Building  
MOSCOW, IDAHO

**KENDRICK LODGE NO. 26. A. F. & A. M.**  
Meets every second and last Thursday of the month  
M. B. McConnell, W. M.  
E. T. Long, Secretary.

**A. H. OVERSMITH**  
Attorney-at-Law  
Urquhart Building Third Street  
Moscow, Idaho.

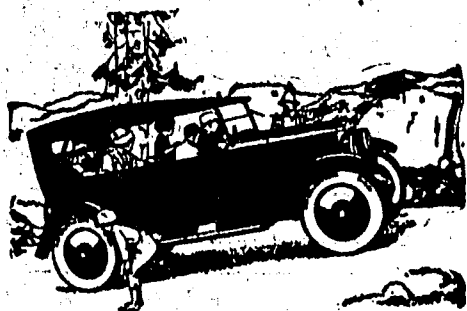
**N. R. Shepherd**  
The Auctioneer  
TROY, IDAHO.

**Draying**  
Residence Phone 654  
Kendrick Dray and Ice Co.  
Frank Boyd, Prop.

**Horseshoeing**  
General Blacksmithing  
Wagon and Carriage Shop  
All work Guaranteed.  
ALL KINDS OF Repairing neatly done.  
**Frank Crocker**

Costs to See Sun Rise.  
City people would like to see the sun rise as the poets describe it in the country, but it costs from \$10 to \$15 to witness such a sight merely once.

**Announcing An Artistic Triumph!**



**Lowest Priced Car with Balloon Tires Standard**

The new Overland Blue Bird! Longer wheelbase, larger body. Big engine, wonderful power! Genuine Fisk balloon tires with artillery wheels. Steel disc wheels at \$25 extra. Come in, see this wonderful car—and enjoy a ride.

Big New **Overland** \$725  
with artillery wheels disc wheels \$25 extra; f. o. b. Toledo  
**BLUE BIRD**

**Kendrick Garage Co.**

**J. J. PICKERD**

Licensed Embalmer and Undertaker

Auto Equipment. Lady attendant. Stock of goods in Kendrick. Phone 462K, or 376 Troy, or see

**G. F. WALKER**

**CATARRHAL DEAFNESS**

is often caused by an inflamed condition of the mucous lining of the Eustachian Tube. When this tube is inflamed you have a rumbling sound or imperfect hearing. Unless the inflammation can be reduced, your hearing may be destroyed forever.  
HALL'S CATARRH MEDICINE will do what we claim for it—rid your system of Catarrh or Deafness caused by Catarrh. HALL'S CATARRH MEDICINE has been successful in the treatment of Catarrh for over Forty Years.  
Sold by all druggists.  
F. J. Cheney & Co., Toledo, O.

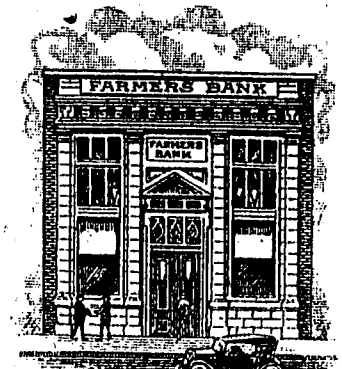
Try a "For Sale" ad in the Gazette. You will get results at little expense.

**Wm. H. Meyer**

Blacksmithing, Wagon Work and Horseshoeing

**All Work Guaranteed**

Pessimist and Optimist.  
The pessimist makes mountains out of molehills and the optimist makes molehills out of mountains.



**You Are Entitled to Every Consideration At The Farmers Bank**

Customers of the Farmers Bank receive the kind of service to which they are fully entitled. The very fact that you maintain your account here gives you the right to consult with our officials at any time upon any matter which will benefit you or your business.

If this kind of service is your idea of co-operation we shall be glad to discuss with you the matter of opening your account.

"Try Kendrick First"

**THE FARMERS BANK**

Kendrick, Idaho



# "The Call of the Wild" TONIGHT and SATURDAY

At New Kendrick Theater. 25c & 50c

## GLEANINGS

Aren't you glad you don't live in Seattle? Beginning Monday of this week haircuts and bobs went to 65 cents and shaves are now selling at 25 cents each.

Walter Housley has torn down his old residence on his property in the west end of town and will build a modern bungalow in its place. The Housley family are camping in tents until their new house is finished. Jack Bailey is helping with the construction work on the house.

George Brocke finished drilling a 90 foot well on his mother's ranch on American ridge. He struck a splendid flow of water having bailed 100 gallons of water from it one morning without apparently diminishing the supply. The well is close to the house and garden.

A. H. Daubenberg, Herbert Jones and Walter Thomas got an early start last Sunday morning and mowed the town park. Mr. Daubenberg used his car to pull the mowing machine while Mr. Jones sat on the levers. Walt trimmed the long grass around the trees with a sickle. When the trio finished their labors the park presented a very much improved appearance.

The Kendrick Dancing Club held a very enjoyable dance at the Fraternal Temple, Monday night. Mr. and Mrs. Harold Thomas furnished music for the occasion. Refreshments consisting of ice cream, cake and coffee were served.

The Walter and Harold Thomas families "traded" houses this week. Mr. and Mrs. Harold Thomas purchased the former Hall residence in the east end of town.

Mrs. R. F. Bigham, who underwent an operation for gall stones three weeks ago is now able to be up and around. She is feeling very much better since her operation.

Carl Porter, cashier of the Bank of Juliaetta, sent a dollar bill to the American Express Co and requested that a dollar's worth of German marks be sent to him. He received eight million marks in denominations of 50,000 each and will give them to his bank patrons as souvenirs.

Charles Crocker, who was dangerously ill Thursday of last week, is now able to be out of the house again. He made a remarkable recovery from his illness.

C. B. Kinzer of Lewiston was transacting business in Kendrick, Tuesday evening.

Reports come from Juliaetta that in spite of the frost damage done a short time ago there will be at least half a crop of cherries or from 5 to 8 carloads shipped from there this season. Last year there were 12 carloads shipped.

The Baccalaureate sermon previously announced to be preached in the Presbyterian church will be preached in the Methodist church Sunday evening, instead.

Mr. and Mrs. Wm. Watts of American ridge went to Moscow, Wednesday, to attend Campus Day at the University of Idaho. Miss Agnes Cox, daughter of Mr. and Mrs. William Cox, was queen of the Campus Day fete.

There will be a program at the American ridge school house Wednesday May 21. Ice cream and cake will be sold and the proceeds used to buy athletic material for the school. Everyone is invited.

Lou Daugherty sold his residence property, now occupied by the J. G. Gardner family, to Mrs. May Barbour of Lewiston. Mrs. Barbour is an aunt of Mrs. L. J. Herres. She will move here sometime next month.

Mrs. L. S. LaHatt and children are expected here tomorrow from Ellensburg, Wash. They will visit a few days at the home of Mr. and Mrs. Sam Stanton and will then make their home in Kendrick as they have a house rented and will take possession as soon as school is out. Mr. LaHatt is conducting a jewelry store here and is working up a good business.

Babson says that it is largely faith or fear that makes business good or bad.

R. F. Brown is installing a new automatic air pressure pump in his garage here. It is operated by a three-quarter horse-power electric

motor. The air pump starts automatically whenever the pressure reaches a certain low level.

Llewellyn Rowlands of Sandpoint, a former Kendrick boy, was made business manager of the University of Idaho literary magazine, "The Blue Bucket". The appointment was made by the executive committee of the student body.

Donald McUrea received the appointment to a position in the forest service last week. He will be foreman of a crew of foresters who will spend the summer in the Priest River country, in North Idaho, fighting the blister rust. The position will occupy his time until the opening of school next fall.

### Grading Juliaetta Streets

Juliaetta has a crew of men grading the streets of the village preparatory to macadamizing. It is estimated that the work will cost approximately \$4,000. Main street already presents a very greatly improved appearance as the greater part of it is nicely graded and ready for surface. The good work being done by Juliaetta will furnish another link in the proposed highway between Kendrick and Lewiston.

### Fourth Carload Sodatol

The fourth carload of sodatol to be shipped to Latah County was distributed from Potlatch, Harvard and Deary on Monday, Tuesday and Wednesday of last week by County Agent U. S. Fletcher. The shipment contained 22,000 pounds of sodatol and was distributed to seventy-eight farmers, representing practically all of the cut-over sections of Latah County.

Sodatol is a blasting powder made from TNT, a surplus war material, and sodium nitrate, and has given excellent results in land clearing work. The four carloads that have been distributed in Latah County contained a total of 77,350 pounds. Two additional carloads of 16,000 pounds each have been ordered for delivery in July or August. One of these carloads will be shipped to Troy and the other to Deary.

### Held Preliminary Hearing

Delmar Mathes, young farmer of the Kendrick district, charged with first degree murder in connection with the killing of Fred Arnett, at the Elliott farm, four miles northeast of Kendrick, Sunday, May 4, was held for trial in the district court by Probate Judge Adrain Nelson, Saturday, following a preliminary hearing.

The hearing occupied practically all of Saturday afternoon. The witnesses examined were Mr. and Mrs. Rufus May, father-in-law and mother-in-law of Arnett, both of whom were present during the fight which is alleged to have resulted in Arnett's death; Dr. C. O. Armstrong of this city, who performed the autopsy on Arnett's body, and John Pickard, Troy undertaker, who prepared the body for burial.

Considerable time was occupied in questioning Dr. Armstrong, the doctor testifying that death was apparently due to a blow on the neck, and that the blow could not have been delivered without an instrument of some kind in the hand. The request that Mathes be admitted to bail until his trial, was denied by Judge Nelson. The case will be tried at the May term of court, and will probably take place near the end of the month. A jury has been called, to report Monday, the 19th and a number of cases have been set for trial.

While Mathes was an interested spectator during the hearing, he did not show any evidence of being affected by the evidence. Prosecuting Attorney Frank L. Moore represented the state and Attorney A. H. Oversmith appeared for the defense.—Star-Mirror.

### Big Bear Ridge Guild

The Bear Ridge Guild was entertained last Wednesday afternoon by Mrs. D. J. Ingle.

Plans for future work were discussed and it was decided the improvement of the Wild Rose cemetery would be the first object of

their work. Delicious refreshments were served by the hostess.

The next meeting will be May 21st at the home of Mrs. Lester McGraw. All members are requested to bring thimbles.

### Commencement Next Friday

The graduating exercises of the Kendrick High School will be held at the New Kendrick Theater, Friday evening, May 23. Dean Iddings of the University of Idaho will deliver the commencement address to the class.

### Return From Coast Trip

Mr. and Mrs. R. B. Parks returned recently from their automobile trip to Roseburg, Oregon, where they visited relatives for a week. They were away two weeks and report a very enjoyable trip. Mr. Parks said the roads were almost perfect. He listened to an address by the governor of Oregon in which the governor stated that Oregon had expended 62 million dollars in the construction of highways. Mr. and Mrs. Parks also went to the coast at Coos Bay for a brief visit.

### TEXAS RIDGE

A number from the ridge took in the high school play in Deary, Saturday night.

Herman Baker made a business trip to Moscow, Sunday returning Monday.

Mr. and Mr. John Warren and baby of St. Maries spent the week end at the Weber home.

Harry Baker and mother were visitors in Juliaetta, Sunday.

Mrs. Slocum and Mrs. Miller called at the Ogden home, Friday afternoon.

Mrs. Weber and daughter visited Mrs. Viola Baker Friday.

James Miller spent a few days last week on his ranch near Deary.

Don't forget the one cent sale at the Red Cross Pharmacy, where a cent buys as much as a dollar. 20—1t

One of the greatest stories ever put on the screen is that of Jack London's famous book "The Call of the Wild," to be shown at the New Kendrick Theater, Friday and Saturday, May 16 and 17.

No Sympathy for Bachelor. It is said that misery loves company, but the spinster never lived who wasted any sympathy on an old bachelor.

## Tuesday Night May 20



Another splendid play by this little wizard of the screen. This picture is even better than "Town Scandal" which was said to be Miss Walton's best.

"Crossed Wires" is a story of a telephone girl who listens in on a crossed wire and the situations resulting are intense and amusing.

An exceptional comedy "High Kickers"

Admission 10c and 25c  
**NEW KENDRICK**  
O. E. MacPherson, Mgr.

# Oh, Skinnay! Look!

Didja see the latest in Bradley Swimming Suits at the Kendrick Store? A few of the many colors, Scarlet trim, tan trim, capri, orange, seal, navy, black, pearl, green, navy and white, maroon.

## New Dress Shirts

Vestless days will soon be here, and that means new shirts. The better kinds are ready for you in wide varieties at this store,

## Collars and Sox

Usually at this time of the year a man takes inventory of his supply of furnishings, and usually he finds that it needs replenishing. Collars and sox, it seems, are always needed---and that's why we always carry such an extensive stock of both.

## Time For Summer Underwear

### Balbriggan and Athletic Underwear

There's comfort in our way of pricing, for a man doesn't have to dig way down deep in his pockets for the price of good underwear here.

"Try Kendrick First"

# Kendrick Store Company

The Quality Store

### Iowa Specialist Favors

#### Concrete Fence Posts

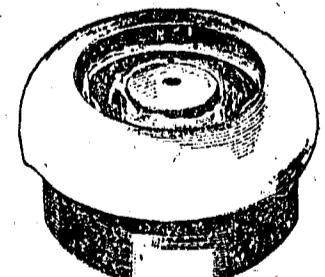
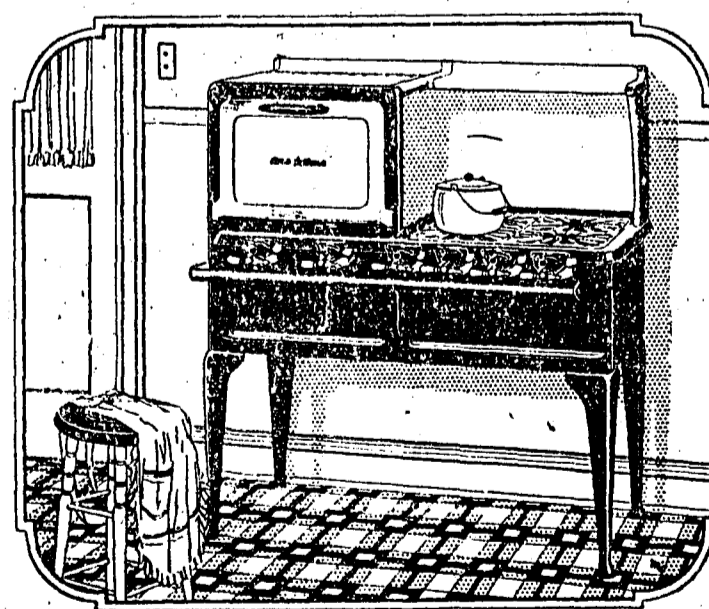
Posts which have been on test in an Iowa experiment station for over eight years, made of concrete and reinforced, show practically no signs of depreciation. The tests showed that the posts made from graded aggregate, although requiring less cement, possessed greater ultimate strength than posts made from bank-run material. For most of the posts a mixture of one sack of cement to two and one-half cubic feet of bank-run gravel

having an excess of fine particles was used.

One-quarter inch square twisted bars, flat bands and No. 3 wire were used as means of reinforcement. When placed in the testing machine, the quarter-inch bars proved most satisfactory. The laboratory tests also indicate the advisability of placing the reinforcing material comparatively near the surface of the post rather than near its center. From five-eighths to three-fourths of an inch from the surface is considered about right by Professor J. B. Davidson.

## WANTED

Cattle, hogs and sheep  
Hides and Wool.  
Call  
Holbrook & Emmett



**NO WICKS**  
Or Wick Substitutes.  
BURNS kerosene, gasoline or distillate, with GAS HEAT.

**RED STAR**  
Detroit Vapor  
**OIL STOVE**

Come in and see this remarkable stove in operation. Get the details of our **Special Introductory Offer**

We have **EVERYTHING** in the line of hardware, paints, oils, house furnishings, heavy hardware, implements, coal and iron.

**Kendrick Hardware Company**  
Furniture "Try Kendrick First" Brunswicks