



# Follow the One Way Road To ECONOMY

Buy Your Shoes at This Store  
Better Shoes for Less Money

These Shoes Stand Hard Knocks



Darkstone Blucher, all leather double oak sole leather counter, leather outside counter pocket, full vamp. You have been looking for a shoe that will stand up and give service under trying conditions. Here it is! **\$4.50**

Darkstone Scout Blucher all leather, double sole to the heel, krom-ek outsole, full vamp. This shoe takes its place among the best. Wear and comfort are assured, pair **\$2.50**



Brownstone blucher, full vamp all leather, soft tip, double oak sole to the heel. Here is a type of Army shoe that is hard to beat for real value **\$3.75**

**\$4.50 \$5.00 \$5.50**



"Try Kendrick First"  
**N. B. LONG & SONS**  
"The Home of Good Things to Eat and Wear"

## Kendrick Warehouse & Milling Co.

Bean Cleaning a Specialty

We are showing a sample of Burbank hard white spring wheat. Come in and let us take your order.

### Have You Tried Our Chick Food?

Ground bone, shell, crystal grit, bone meal, meat scraps, charcoal, O. K. Scratch, mash food.

What About Idaho Best Flour? We Have it.

## Useful Plants Run Wild and Become Grave Pests

There are numerous cases where useful plants have become weeds because they were moved to places where conditions were favorable for their rapid spread and development. Johnson grass is very useful in the South to protect the sides of levees much as quack grass and western wheat grass was formerly used to protect railway embankments. Once introduced into cultivated fields where the roots are widely scattered

by machinery, the above useful grasses at once become serious pests. Plants that are apparently innocuous are sometimes introduced in trial packages of flower seeds which, if allowed to spread uncontrolled, soon become a nuisance.

Television is Predicted.  
An American inventor predicts that in twenty years television will be in common use. Instead of seeing motion pictures some time afterward we shall be able to sit in a theater and actually see, as if on the spot, instead of many miles away, and at the same time hear.

## THE KENDRICK GAZETTE

Published every Friday at Kendrick, Idaho, by

Ralph B. Knepper

Subscription price.....\$1.50

Entered at the post office at Kendrick as second class mail matter.

Foreign Advertising Representative THE AMERICAN PRESS ASSOCIATION

## LELAND NEWS

A young lady that we shall be pleased to call Miss Earnestine Minnie came to the home of Mr. and Mrs. Denzel Kuykendall early Sunday morning, April 6, and just seems to be perfectly at home. All are doing well and Miss Helen Eilers is with the family assisting in entertaining the new arrival.

The reception for Rev. J. H. Dills, P. E., of the Inland District, was well attended last Friday evening and all seemed to enjoy the program and splendid refreshments served by the W. H. M. society.

Miss Edith Larson the efficient sales lady who has been with De-Winter & Goudzward for some time and has made so many friends, has resigned to take care of her sister, Mrs. Wesley Hartinger, who has been sick for several weeks past. Mrs. James Helton takes the place of Miss Larson behind the counter and we are sure she will make good.

Mrs. Lucy Keizer the intermediate teacher in the public school accompanied her husband to Walla Walla, Wash. on Friday returning by train, Sunday.

Misses Zella and Ethel McVickers were week end guests in the home of Mr. and Mrs. Garry Hogrefe.

The Methodist church is planning for a great Easter program. Good Friday meditations at 8:00 p. m. Sun-rise prayer meeting Easter morning, Sunday school at 10 o'clock, baptism of children and an Easter sermon at 11:00 a. m., Epworth League devotional meeting at 7 o'clock and preaching at 8:00. There will be plenty of good and appropriate music. To these services the public are most cordially invited. This is a home church and we are sure we can make you feel so.

"I know a little pussy her coat is silver gray,  
She lives down in the meadow and never runs away.

She always was a pussy, she never was a cat,  
Her name is pussy willow, now what do you think of that?"

## LENORE LOCALS

W. J. Green made a business trip to Lewiston, April 11.

Miss Mary Weaver returned to her home at Cream ridge where she will stay until Sunday, as they are having a vacation at the high school.

Darwin Tarry, Irvin Boyce and Charles Schetzle were guests at the H. Southwick home, last Saturday.

Alonzo Douglas was an over-night guest of H. Southwick, Saturday, April 12.

Born to Mr. and Mrs. John Goin, April 10, a seven pound boy.

Miss Fern Green of Lenore has been working at Ahsahka the past week.

Jake Slater has moved to the Daugherty place to put in the crop.

Miss Marie Judkins, who is book-keeper of the Genesee bank, came to her home on Cream ridge for a few days vacation.

Mr. and Mrs. Frank Vaughan were week end visitors at Lewiston.

L. Daugherty has been working for W. J. Green the past week.

Claude Pippenger has purchased a new truck.

Miss Gladys Daggett made a trip to Lewiston, Saturday.

Cream Ridge Sunday school had a very small attendance, Sunday, on account of the rain.

Mattie Ward is up from Lewiston looking after his cattle.

Joe Fruecht started his sawmill, Monday.

Carman Green and wife, who have been working at Cherry Lane, came home for a few days visit before going to Orofino, to work.

Everybody of Cream ridge was very glad to see the recent rains.

## CAMERON ITEMS

Messrs. Silflow, Mielke and Wegner made a business trip to Lewiston, Wednesday.

Mrs. A. O. Wegner entertained the following, Thursday: Mesdames Blum, Ehlers, Spekker, Kruger and Rein.

Mrs. Henry Wendt and Miss Henrietta Blum were visitors in Moscow, Saturday.

Mr. and Mrs. Gus Kruger entertained at Sunday dinner, Rev. and Mrs. Rein and sons, Mr. and Mrs.

Blum and family and Walter Silflow.

Mr. and Mrs. A. O. Wegner took Sunday dinner at the Fred W. Silflow home.

Herman and Adolph Wegner of Lewiston were visitors at the Aug. F. Wegner home, Sunday.

Mr. and Mrs. Fred W. Silflow were callers at the George Larson home, Monday.

Rev. and Mrs. Rein and Mr. and Mrs. August O. Wegner, celebrated their 9th wedding anniversary, Monday. In the evening about twenty of their friends gathered to spend the evening. A delightful lunch was served by Mrs. Rein and a very enjoyable evening was spent.

# DAIRY FACTS

## Dairy Animals Help in Country's Meat Supply

(Prepared by the United States Department of Agriculture.)

About 17 per cent of the matured dairy animals in this country find their way to the slaughter and packing plants, according to the United States Department of Agriculture. If this percentage is applied to the number of matured dairy animals reported on farms by the last census, and the average live weights and dressing yields are used in calculating the beef production, the result shows about 1,602,450,000 pounds of carcass beef produced from dairy cattle during the year 1920. This quantity represents more than 23 per cent of the total beef production of the United States for that year. Probably 80 per cent of all the calves slaughtered are of dairy breeding. If this percentage is applied to the total number of calves slaughtered in 1920 and the resulting figure multiplied by the average live weight and dressing yields, the amount of veal produced by dairy calves is about 500,647,000 pounds for the year 1920.

The principal conditions which cause dairy cows to be discarded for milk production purposes are old age, disease, physical defects, low milk yield, and sterility. Many old dairy cows and others that are unprofitable as milk producers are fattened for a short period and then sold for beef. When properly fed such cows make rapid gains, although the tendency is to ac-

cumulate fat externally and in the body cavities rather than to produce a well-marbled flesh. About 85 per cent of the cow carcasses are graded as common or lower, and the meat is used largely in the preparation of sausage and canned meat.

Bulls that are no longer desired in the herd for various reasons make up a part of the meat from dairy cattle. They are seldom suitable for dressed beef, a large proportion of the rounds being used for dried or smoked beef and the remaining portions of the carcasses for sausage.

While the quality of beef produced from mature cows and bulls is of lower grade, that is not necessarily true with respect to the veal obtained from dairy calves. Probably 95 per cent of the male and 50 per cent of the female dairy calves are slaughtered as calves. Most of these animals, if properly handled and slaughtered while young, produce a high grade of veal.

## Eradicate Tuberculosis

New Mexico is expecting to find the eradication of tuberculosis from its cattle a comparatively easy and inexpensive task, according to reports made to the United States Department of Agriculture. In the greater part of the state probably no more than one test will be required, as large areas are thought to be practically free of the plague. It is probable that in many of the states of the South and Southwest only a small percentage of the cattle will be found affected with the disease.

## Keeping Silo Doors in Place While Emptying

A large percentage of farm silos have removable doors. As they are taken out when feeding the silage they are sometimes dropped to the bottom and put in the barn or piled somewhere for safe keeping.

As the doors are taken out find it far better to stick the top door under the eaves somewhere and then as each door comes out slip it in the opening above, says an Ohio writer in Successful Farming. When the silo is empty, the doors are all in place. This helps to hold the empty silo rigid while it is empty. Empty silos are the ones affected by heavy winds. In filling the silo the replacing is reversed so that when the top is reached the last door is under the roof just where you want it.

This saves a lot of bother during filling, as many farmers fasten each door on a rope and haul it up the chute as the silo fills up. Tramping silage keeps it lots more than pulling doors.

Money in Motion Pictures.  
The Motion Picture Producers and Distributors of America, Inc., states that there is a practical investment in real estate, studios, equipment and salaries of over \$500,000,000, with probably \$50,000,000 paid in salaries, \$200,000,000 paid annually in production and nearly three-quarters of a billion paid annually for admission, with an equal turnover in the business of over \$1,000,000,000.

## METHODIST CHURCH

Sunday school at 10:00 a. m.  
Preaching at American Ridge at 11:00 a. m. Subject: "The Meaning and Significance of Easter."

Preaching at 7:30 p. m. Special Easter service. There will be special music consisting of chorus duets, and sermon by the pastor. Subject of sermon: "Glorying in the Cross."

A hearty welcome is extended to all.

James W. Poolton, Pastor.

## EMANUEL LUTHERAN CHURCH

Cameron, Idaho,  
Rev. Edward A. Rein, Pastor

Church services - 10:30 a. m.  
Sunday school - 9:30 a. m.  
Lenten Service, Wednesday 3 p. m.  
Luther League 2nd Sunday in the month.

Ladies Aid 1st Sunday in month  
Church Council 1st Monday in month  
Come and worship with us.

## Say It With Candy

That young lady can't resist the appeal of a nice box of bon bons. When she finds you bought it at Perryman's she will know it is the nicest candy that money can buy. Every box full of delicious confections.

Purity Ice Cream

Hot and Cold Lunches

**Perryman's**

"Try Kendrick First"

# Gray Ware Special

See our window Saturday Morning  
Special Sale on Gray Granite Ware

We offer you this First Quality, one-coat, New England Grey Ware at prices as low or lower than any made by the large city syndicates who make a specialty of these granite ware sales-

**16 Dozen Pieces at 19c.**  
**12 Dozen Pieces at 39c.**

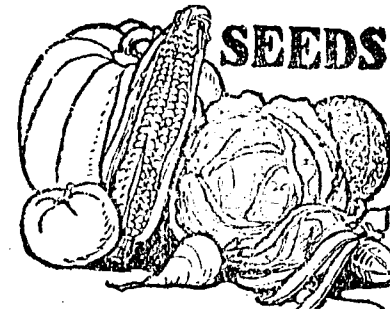


## Paint Up, Clean Up

You can add many hundred dollars to the value of your property by painting this spring. Besides, just imagine how a coat of paint will improve the appearance of your building.

Good paint is the cheapest protection against deterioration. Our stock of paint is large and varied. We have the right paint for each job.

We want your business on a basis of good paint at a fair price. Try us first.



## GARDEN SEEDS

We carry a stock of Washburn-Wilson state tested seeds in both packages and in bulk.

All our seeds are strictly fresh stock which has been in the boxes less than 30 days. Prices absolutely right.

## Bargain Goods

Deere Bean Planters **\$72.00**  
8 ft disc harrow (used) **\$55.00**  
7 ft disc harrow (used) **\$50.00**  
8 ft G Acme harrow **\$42.50**  
See us for other bargains in farm machinery.

The  
**Carlson Hardware Co.**  
THE WINCHESTER STORE

**New Anti-Skid Chain.**  
New anti-skid chains for automobiles are clamped directly to wheel spokes without the use of side chains.

**Plants in Sleeping Rooms.**  
Plants kept in sleeping rooms do not give off enough carbon dioxide to be injurious to human beings.

### Single Track for Highways Favored

#### Step Taken for Construction of Permanent and Economical Road System.

Sometimes the financial resources of a community do not permit the construction of the necessary mileage of standard width pavement. To such a community durable construction is as important as it is to communities more favorably situated financially. In fact, limited funds increase the necessity for permanent, economical, maintenance-free highways.

**Step Toward Permanent Road.**  
Some of the communities confronted by this problem have met their needs through the construction of half width, single-track concrete pavements. By this method they have provided a high-class, hard-surfaced road, capable of carrying traffic 365 days of the year. A step has thus been made toward the construction of a



Single Track Concrete Road.

permanent highway system, and every cent used has been invested toward the completion of that system.

When traffic demands it and when additional funds are available, a second trip of single-track road can be placed alongside the first strip. When that time comes the second half of the full width pavement can be laid without interrupting traffic, which will continue to use the first half without interference as before. No detours will be required. In the meantime the single-track roads help the development of the community, cut down transportation costs, reduce maintenance requirements, in short, render the service typical of a concrete road.

**Not Good on Through Routes.**  
On through routes, carrying a heavy volume of traffic, single-track roads are sure to be a disappointment. But on secondary routes and on highways in sparsely settled or undeveloped regions they furnish the means for more intensive development of the community resources and constitute a permanent part of a highway system which will serve its community and state through succeeding generations. Over 1,200 miles of this type of concrete road had been built in the United States.

## POULTRY

### CHEAPEST FEEDS TO PRODUCE MOST EGGS

When the farmer's wife wants to make a good showing on eggs, she at once wants a good variety of feeds from which she can prepare the dry mash and scratch feeds for the flock. Sometimes there are feeds in our rations that cannot be included because of expense in some parts of the state, or availability in others. The cheapest ration which will produce the most eggs is our aim, rather than the best ration regardless of price. Here are some suggestions by L. E. Card, University of Illinois:

"For example, wheat mixed feed or ground whole wheat may replace bran and middlings in the mash if local prices for these latter are too high. Standard middlings will occasionally be cheaper than the combination of bran and flour middlings and may be substituted for these. Hominy feed may replace corn meal.

"Tankage or crackling meal may replace meat scrap if the latter is too costly. However, meat scrap is much more readily eaten and it is therefore usually unwise to replace it with tankage unless there is a considerable difference in price. A difference of ten dollars a ton between meat scrap and tankage means a difference of only one to two cents a day in the cost of feeding a flock of one hundred hens. One extra egg daily will pay for this small difference.

"Any change in the ration should be made gradually rather than abruptly for the reason that marked changes suddenly made are almost certain to cause a drop in egg production and may cause the birds to molt."

### Mature Turkey Gobbler for Breeding Purposes

The mature turkey gobbler, or tom as he is more rightly called, often attains a weight of from thirty-five to forty-five pounds when two years old or over, says a writer in the Successful Farmer. He is fat, clumsy and awkward and not as active as a cockerel or a yearling.

Under no condition should a tom of the weights given above be used on females weighing less than twenty-five pounds and even then the spurs should always be clipped off and the sharp ends of the toenails removed with a file. If this is not done, he is likely to tear the skin over the backs of the hens in such manner as to cause death. This is especially true if the hen is very fat. Some breeders protect the hens when using a heavy tom by placing a cloth over the back during the breeding season.

Well-developed cockerels and yearling toms are usually very satisfactory for breeding purposes. With most varieties of turkeys one tom to twelve or fifteen females is quite enough for safety in breeding. In flocks where two or more toms must be kept, it is advisable to allow only one tom with the flock at a time, due to the fact that they will often fight and injure one another badly enough to interfere with their breeding ability.

### Rearing of Chickens Is Most Difficult Problem

Unfortunately many people seem to think that when the chicks are hatched in an incubator the worst of the work is over. Such, however, is not the case. With a first-class incubator, good hatches are comparatively easy and sure, but rearing the chicks is a more difficult matter.

Besides proper feeding and care, the right kind of brooding is necessary. That means that plenty of warmth, plenty of circulation of pure air so that foul air does not collect under the hover and poison the chicks, is absolutely necessary. To bring off a nice lot of chicks and then try to brood them "by hand" in a makeshift brooder is to invite trouble and loss.

A good brooder will last a good many years and therefore is not expensive, even if the purchase price does seem a little high.

### Poultry Hints

Good hens are scratching out a good living for many poultry raisers. Why not for you?

Never frighten the turkeys. If you have occasion to drive them, do it slowly so as not to scare them.

Poultry raisers must learn that the best hen medicine is sanitation and must give big doses of it regularly.

Sour and moldy food should never be fed to poultry. The health of the fowls is worth more than the saving on the cost of the feed.

There ought to be more geese. We find them the most economical poultry to keep and fine eating.

Chaff and straw and hay should be used liberally on the poultry house floor. They suggest leaves and seeds to the hens and are valuable in promoting exercise.

Any unhealthy looking fowl should be removed from the rest of the flock and the trouble and a remedy sought. Sick birds should never be kept with the healthy ones.

### Caution Necessary When Making Change to Grass

When spring grass comes there is always a tendency on the part of dairymen to immediately cut down on other feed. Experience, however, would lead us to believe that it is well to make haste slowly in making the change and the best dairymen never cut the grain supply entirely off. Early grass is soft, containing a large amount of water, and a relatively small percentage of milk-producing elements. Even where the pasture is good it is impossible for large producers to do their best and keep up their body condition. It will pay to watch the cows carefully and make

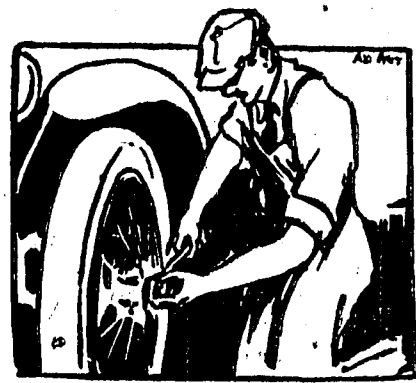
the change slowly until the later grass of summer comes on with its greater feeding value. Unless economy in feed is very necessary the feeder can well afford to keep a certain amount of grain in the cow's ration all summer.

### Office of Poet Laureate.

It is 307 years since the office of Poet Laureate was instituted in England, and during that period 16 writers have received the honor.

### Would Return to Old Job.

Doubtless many a woman wishes she could dispose of her stock in the matrimonial combine and get her old job back in the laundry.



### We Can Repair It. Try Us.

And in most instances it won't require much time, but if you neglect some minor car trouble it may develop into a serious one, even tying you up on the road somewhere.

The Safe Way Is To Have Us Inspect Your Car  
If it needs an overhaul job we can do it for you and will guarantee satisfaction.

Buy Mason Tires

THE RELIABLE GARAGE

R. F. Brown, Prop.



Look for the Water Mark

## Symphony Lawn

The Paper with the Inviting Texture

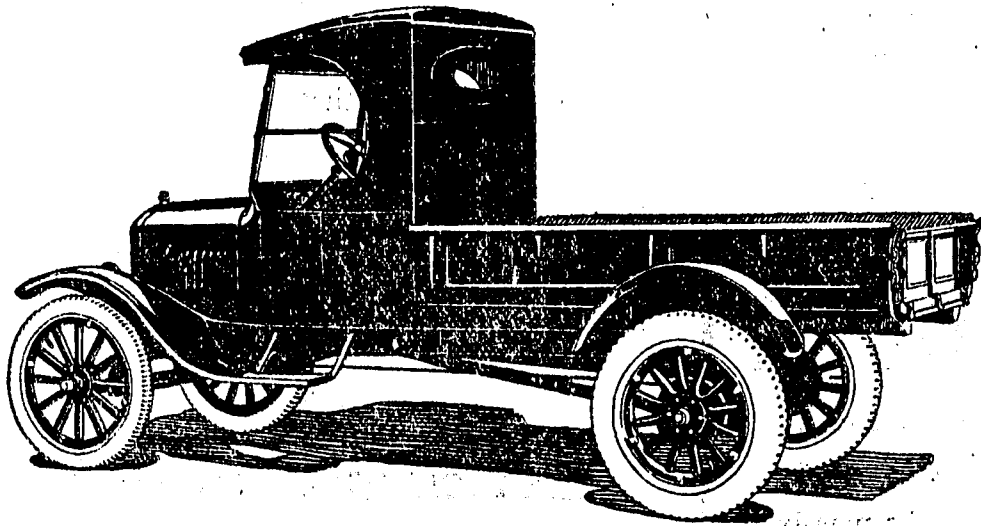
HOLD a sheet of Symphony Lawn Writing Paper to the light. Note its translucent clearness. Then feel the beauty of its real lawn texture. It invites you to use your pen.

Then observe the water mark—placed there for your guidance and protection.

Symphony Writing Paper is the choice of discriminating women—not only because it is in good taste, but because of its splendid writing surface. Made in three finishes and several fashionable tints. Sheets and envelopes to be had in a number of styles, permit expression of personal taste. Correspondence cards and envelopes, also.

The Red Cross Pharmacy

Ford Steel Body Truck \$490  
L. O. B. Detroit



### Why Commercial Users Prefer the Ford

There is much significance in the fact that more than 75% of all commercial cars of one-ton capacity or less in the United States are Fords.

This overwhelming preference for Ford haulage units has its basis in the low cost of Ford transportation, the rugged construction of the truck itself, and its unusual adaptability to every line of industry.

Mechanical excellence, simplicity of design and ample power are further factors that have contributed to the popularity of the Ford One-Ton Worm Drive Truck.

The Ford One-Ton Truck equipped with an all-steel body and cab is now available as a complete unit, priced at \$490 L.O.B. Detroit. Screen sides and canopy roof that may be easily fitted to this unit are supplied at small additional cost.

Ford Motor Company  
Detroit, Michigan

See the Nearest Authorized Ford Dealer

## Eleven Advantages of Amaizo Oil

1. Fries beautifully, thoroughly, quickly.
2. Does not smoke at cooking temperature.
3. Does not carry the flavor of one food to another, so can be used over and over.
4. Heats quickly.
5. Measures easily and accurately.
6. Blends rapidly with other ingredients.
7. Necessitates no melting.
8. Makes delicate, delicious cakes—is an ideal shortening.
9. Maintains the delicious natural flavor of foods.
10. Does not curd in mayonnaise.
11. Its can is dustless, rustless, easy to handle and store.

# AMAIZO OIL

Your Grocer Has It



Send for the FREE

### AMAIZO Cook Book

All of its recipes are tested and practical. They tell you of the best ways of cooking, simply, easily and with delicious, appetizing results. Address: 111 West Monroe St., Chicago, Ill.

AMERICAN MAIZE-PRODUCTS CO.  
New York - Chicago

## The Farmers Bank

at Kendrick, in the State of Idaho at the close of business

March 31, 1924

### RESOURCES

Loans and Discounts	94,659.31
Overdrafts	179.83
Stocks, Bonds and Warrants	30,950.15
Banking House Furniture and Fixtures	9,636.00
Other Real Estate	4,585.07
Claims, Judgments, Etc.	5,179.39
Cash on hand	\$ 5,143.34
Due from banks	16,333.86
Checks and Drafts on other Banks	123.40
Other Cash Items	16.75
<b>Total</b>	<b>\$166,807.10</b>

### LIABILITIES

Capital Stock paid in	\$ 15,000.00
Surplus	3,000.00
Undivided Profits, less Expense, Interest and Taxes Paid	356.92
Individual deposits subject to check	84,047.94
Savings Deposits	19,632.69
Time Certificates of Deposit	44,553.46
Cashier's Checks	216.09
<b>Total Deposits</b>	<b>\$148,450.18</b>
<b>Total</b>	<b>\$166,807.10</b>

STATE OF IDAHO, COUNTY OF LATAH, ss.  
I, M. B. McConnell cashier of the above named bank do solemnly swear that the above statement is true to the best of my knowledge and belief.

M. B. McCONNELL, Cashier.

Correct—Attest:

A. E. Clarke } Directors.  
E. W. Eaves }

Subscribed and sworn to before me this day 9th of April, 1924.

I certify that I am NOT an Officer or Director of this Bank.—G. F. Walker, Notary Public.





**GLEANINGS**

Mr. and Mrs. E. W. Lutz and children were in Kendrick last Saturday for a brief visit. Mr. Lutz attended a directors meeting of the Kendrick State Bank.

A. Wimot went to Wallace, Tuesday, on business.

Dr. McKeever has moved his dental offices to the rooms at the rear of the Kendrick State Bank. The rooms were recently calcimined, painted and remodeled and are very desirable office rooms. Dr. McKeever has added some new dental equipment which he installed the first of the week.

Last Sunday was Orofino's lucky day—it rained so the baseball game was called off. Next Sunday Kendrick will play Orofino.

Jack Pickford of Troy purchased a de luxe model light Overland car from the Kendrick Garage Co. last week. The car is equipped with disc wheels, cord tires and bumpers.

Mrs. W. M. McCrea was a Moscow visitor the first of the week.

B. Assman arrived the first of the week from Portland to visit at the home of Mr. and Mrs. Harry Langdon on American ridge.

Earl Roseborough of Winchester made a brief visit at the home of his uncle, J. G. Gardner, the first of the week.

Herman Taylor of Juliaetta and George Crocker of Kendrick left Monday for Portland where they have employment. They expect to work in the woods out of Portland.

N. Brocke has purchased a new Ford touring car from the Kendrick Garage Co. He is having all the latest improvements put on his car so that when it is ready for the road it can climb a tree, jump a creek, fear up on its hind wheels or do any of the tricks that a good Ford is supposed to do.

E. E. Eastwood, auditor for the Vollmer Clearwater Co., arrived Tuesday on business.

A. H. Daubenberg and Herbert Jones went to Moscow, Sunday, and returned with a used Grant car, which is the property of the Kendrick State Bank. They encountered some very muddy roads on the trip.

N. E. Walker met with the Juliaetta Village Board, Monday night to assist in organizing an improvement district in Juliaetta for the purpose of improving the streets and sidewalks of the town. Petitions are being circulated there for the district.

The Kendrick high school played the Lapwai high school at Lapwai last Friday afternoon. The locals came home with decidedly the short end of the score.

Robert W. Bigham, who is working in one of the camps near Bovill, spent the week end in Kendrick with his family.

The following paragraph appeared in the last issue of the Juliaetta Record: "E. J. Dunn is no longer connected with the Juliaetta Record."

Mrs. M. A. Deobald was a Lewiston visitor the first of the week.

Complaint has been made that some of the town boys are shooting song birds in and around town. There is a state law against this sort of sport (?) and it can easily be enforced. It's a ruthless proceeding to kill song birds.

Mrs. J. W. Gilmore of Portland is visiting her sister, Mrs. Win. T. Seeley. She will remain here until later in the spring when she will join her husband who is construction engineer on the highway work at Lowell.

Mrs. N. B. Long fell from a chair which she had placed on a table to hang curtains, and broke one of the bones of her arm. The fractured bones were set by Dr. Seeley.

Mrs. C. H. Kittenour of Plains, Montana, arrived yesterday to visit her niece, Mrs. M. B. McConnell.

It has been definitely established that men like to have some one wait on them. A luncheon was served at the Moscow chamber of commerce, meeting this week, cafeteria style for a change, but the club voted to go back to the old style.

Mrs. Ralph Plummer entertained a number of little folks at her home in honor of her daughter, Jane's birthday, Saturday afternoon from 3 to 5 o'clock. A jolly time was enjoyed by the little folks with games, after which refreshments were served.

Fred Rathbun of Juliaetta and Edith Weaver of Princeton were married at Moscow, Wednesday afternoon by Probate Judge Nelson. They will make their home in Juliaetta.

If all of his relatives vote for him, Al Smith ought to make a formidable candidate for the presidency.

The Latah county commissioners at Moscow and the Nez Perce county commissioners at Lewiston, opened their second quarterly sessions for the year, Monday.

Invitations are being mailed for a Masonic party which will be held in honor of the Eastern Star at the Fraternal Temple, Monday night, April 28. The services of Mann Bros. Orchestra of Lewiston have been engaged for the occasion.

E. H. West of Peck was in Kendrick, Tuesday on business and spent the night at the M. V. Thoms home.

Work is now progressing rapidly on the construction of the new highway in the Cedar creek section. Grading crews are at work and already there is marked progress. It is said that within a period of 30 days a large amount of the grading will be completed, providing the weather is favorable.

No particular damage is reported from the effects of the severe hail storm that visited this section Wednesday afternoon. Even the young garden plants seemed to pull thru without serious injury. It is also reported that the frosts in the early part of the week did no particular damage to the fruit.

Rev. Howard Mort, a former pastor of the local Methodist church, writes from Estacada, Oregon, that he and Mrs. Mort will probably make a brief visit in Kendrick some time early in the summer. Mr. Mort expects to go to Boston to take up theological studies and will then take post graduate work at Harvard. He and Mrs. Mort have been very successful in their work at Estacada.

Mr. and Mrs. J. C. Bibb arrived from Lewiston last Friday to visit at the home of their daughter, Mrs. J. G. Gardner.

Charles Lewiston of Moscow was transacting business in Kendrick the first of the week.

C. F. Byrne shipped two carloads of Potlatch spuds to the Spokane market this week. It was all choice stuff and Mr. Byrne paid the producer \$1.25 per hundred for the shipment.

Frank Fairfield returned Wednesday morning from a visit with his parents at Clarkston.

Frank Meyer left the first of the week for Palouse to spend a few

days with relatives.

J. M. Woodward of Leland went to Lewiston, Tuesday afternoon on business.

Word comes from Lewiston that Gene Chinaman, who is in the hospital there, has a very good chance of recovering his eyesight. The doctor in charge says he believes sight may be restored without an operation, but if an operation is found necessary there is every chance that it will be successful. As long as Gene could see, he didn't ask odds of anyone, even though he is old enough to have retired a quarter of a century ago.

Mrs. J. L. Glover of Spokane arrived Wednesday afternoon to visit her sister, Mrs. H. P. Hull.

The husband, who had a great habit of teasing his wife, was out driving in the country with her, when they met a farmer driving a span of mules. Just as they were about to pass the farmer's rig the mules turned their heads toward the auto and brayed vociferously.

Turning to his wife, the husband cuttingly remarked, "Relatives of yours, I suppose?" "Yes," said his wife sweetly, "by marriage."—Exchange.

About twenty members of the local Oddfellows lodge, including the degree team, went to Leland last Saturday night to put on degree work for the Leland lodge. They report a splendid meeting and a very interesting and enjoyable evening.

**EASTER DINNER**

The place to buy your Easter dinner. The Methodist Ladies Aid will hold a cooked food sale, Saturday, April 19th in the room next to Stanton's Store.

**Observing Arbor Day Is Big Event**

Associated With Patriotic and Esthetic as Well as Economic Ideas.

(Prepared by the United States Department of Agriculture.)

Arbor day has become associated all over the United States with patriotic and esthetic as well as economic ideas. It is at once a means of doing practical good to the community and an incentive to civic betterment, says the United States Department of Agriculture. The planting of trees by school children is usually accompanied by ceremonies intended both to impress upon those present the beauty of trees and their effect in improving the appearance of school grounds, streets, parks and highways and to lead them to a realization of the value of community national foresight.

Time of Observance Varies. The time of observance of Arbor day varies greatly in different states and

# QUALITY QUALITY

## Why Harp so Much on Quality in Talking About MEN'S CLOTHING?

Because this is a quality store, always has been and always will be. Because quality is the vital thing, the one thing on which everything else depends. Because apart from good quality there can be no real economy, for there can be no real service. Because in all merchandise, particularly in men's clothing, good service, permanent good looks and ultimate satisfaction depend absolutely on good quality in the fabrics and in the tailor-work. The good quality of the Kendrick Store Company men's clothing begins in the finer wool fabrics.

Men's suits at the Kendrick Store Company are priced, not any lower than their superior quality demands, but not a penny higher **\$19.50 to \$45.00**

## DRESS UP FOR EASTER

Everybody goes to church on Easter Sunday and of course you will want to look your best. New suits for young men just arrived in time for the occasion. We will be pleased to show you.

New dress shirts in many designs and cloths, very reasonably priced from **\$1.50 to \$4.00**

## BLOUSE MATERIAL

Pretty printed silk mull and Tussor silks, Canton and crepe de chine in many colors and patterns for your selection, yard **\$1.15 to \$3.50**

## GROCERY SPECIALS

Solvane pure shredded soap, a can	10c
Sun Brite Cleanser, 3 for	25c
9 pound sack rolled oats for	53c

**"Try Kendrick First"**

# Kendrick Store Company

The Quality Store

### Poultry Profits Depend on Earliness of Hatch

Profits in poultry raising depend to a large extent on the earliness in the season that chickens are hatched. The earlier in life a pullet commences laying, the greater the number of eggs produced during the first laying year. Pullets should be in laying condition the first part of October, if good winter egg production is to be expected. The more eggs laid during November, December and January, the greater are the annual profits.

In order to commence laying in October, pullets of the Plymouth Rock, Rhode Island Red, Wyandotte, and similar breeds should be hatched the latter part of March or the first part of April. Pullets of the Leghorn, Ancona, and similar breeds should be hatched the latter part of April or the first part of May.

However, yearly plantings accompanied by appropriate exercises serve to keep the people continually reminded of the value and necessity of the work of the foresters, and they have such a far-reaching effect on the community spirit, and through that on economic and social betterment, that no community can afford to neglect Arbor day.

Teach Important Lesson. An even more important lesson—the damage done to our natural parks and woods by the thoughtless and selfish vandals—may be taught through a judicious observance of the day. What fire is to the forest, this marauder is to the community park and woodlands in the destruction of ornamental trees and shrubs. The national and state governments are using every possible means to educate the public in the care of the forest, whose relation to the welfare of man is becoming more and better understood with every passing year of education and co-operation.

Planting of trees on Arbor day can provide a direct economic resource only in comparatively treeless regions or where windbreaks and timber and fuel for the home and neighborhood use are needed. Forest plantations, whose chief purpose is the raising of timber for commercial use or the protection of watersheds upon which cities and towns depend for their water supply, must be left to foresters.

## Friday and Saturday Of This Week

We will show the Biggest Thrill picture of the season.

# One Week of Love

Costarring **ELAINE HAMMERSTEIN and CONWAY TEARLE**

*The Ideal Photoplay Entertainment—Elegance—Thrills—Romance*

### A Vivid Airplane Crash

The nose dive as viewed from a plane is vividly pictured and the spectator experiences a feeling of wild excitement as the trembling plane plunges madly toward terra firma, then gathers and rights itself, only to drop into a tail spin and finally crash to earth.

### A Thrilling Railroad Wreck

The wreck in the picture comes when a passenger train plunges thru the open span of a high bridge which has been damaged by the stream beneath it swollen to abnormal size and strength by a cloud-burst in the mountains. First one sees the timbers of the bridge being torn apart like jack-straws. Then one sees the train rush madly onto the damaged structure and leap with a shriek and a scream to the raging waters below.

Play by Two of the Screen's Most Popular Stars

**Admission Prices 15c and 35c**

## The New Kendrick

O. E. MacPherson, Manager



A new shipment of rugs just received. Rugs to fit any room or any pocketbook!

## This Is a Real Bargain

In fact the best we have seen for a year.

### 2 Quart "Wear-Ever" Double Boiler \$1.98

Regular price \$3.05. Not enough to go around. Get yours early.

We have EVERYTHING in the line of hardware, paints, oils, heavy hardware, implements, coal and iron.

# Kendrick Hardware Company

Furniture "Try Kendrick First" Brunswicks