



# THEY ARE HERE!



New spring dress materials in the newest shades and patterns. You are invited to inspect the new weaves and colorings that will be popular for spring and summer wear, all moderately priced.

New printed silk Canton crepes and crepe de chene, yard **\$2.95**

New printed cotton crepes selling per yard at **65c to \$1.15**

Popular Normandy voiles **65c**

Plain ratines best shades **60c**

Fancy ratines in plaids and checks Per yard **65c 85c \$1.00**

Mercerized suiting guaranteed fast color, per yard **50c**

Designer patterns will help you with your new spring frock. We carry a complete stock of all the best selling sizes.

"TRY KENDRICK FIRST"

## N. B. Long & Sons

"The Home of Good Things to Eat and Wear"

**THE KENDRICK GAZETTE**  
Published every Friday at Kendrick, Idaho, by  
Ralph B. Knepper

Subscription price.....**\$1.50**

Entered at the post office at Kendrick as second class mail matter.

### METHODIST CHURCH

Sunday school at 10:00 a. m.  
Preaching at American Ridge 11:00 a. m. Subject: "The Forgotten Vow, or Getting Back to Bethel."  
Preaching at 7:30 p. m. Subject: "The Devil at Church — Did the Devil bring the man or did the man bring the Devil? Which?"  
A cordial invitation is extended to all.  
James W. Poolton, Pastor.

### FAIRVIEW NEWS

× Miss Edith Boyd was a caller at the McCall home Saturday evening.  
Virgil Freshman made a business trip to Moscow, Saturday.  
× Mr. and Mrs. James McVicker and daughter, Violet, of Leland, were overnight guests at the T. J. Freshman home, Friday.  
× Mr. and Mrs. T. H. Daugherty spent Saturday night with their daughter, Mrs. Amiel Peters.  
× Mrs. Hugh Parks and daughter visited her mother, Mrs. Hund, Wednesday of last week.  
× Mr. and Mrs. Ralph Corkill were Sunday visitors at the Wilfred Corkill home.  
× Miss Dora Vincent spent Sunday with Miss Olga Wolff.  
× Virgil McVicker visited Sunday with Jack and Clair McCall.  
× Mr. and Mrs. J. M. Woodward and family were dinner guests at the Roy Morgan home, Sunday.  
× Mr. and Mrs. Virgil Freshman entertained at Sunday dinner, Mr. and Mrs. Amiel Peters and family, Mr. and Mrs. Lyle Harrison and son and Jake Daugherty.  
× Misses Olga and Rosa Wolff, who have been visiting their parents here, returned to Seattle the first of the week to resume their work.

The Kendrick Hardware Co. carries a complete stock of blacksmith and brooder coal. 12-1t

### BIG BEAR RIDGE

× Mrs. Wade Keene is visiting friends in Spokane this week.  
× Miss Flora Nelson returned home, Sunday, having spent several weeks with her sister, Mrs. Lief Field.  
× Mr. and Mrs. Gabriel Forest and Adolph Forest autoed to Moscow, Sunday, and spent the day visiting friends.  
× Miss Johanna Hooker was visiting friends in Moscow the last of the week.  
× Otto Alber has installed a radio set in his home here.  
× John Heath of Texas ridge spent last week with his brother, Newt.  
× Mrs. Anton Nelson is visiting at the home of her daughter, Mrs. Lief Field at Colton, Wash., and with friends in Moscow.  
Harvey Fairfield returned home from Lewiston last week.  
The Stag Club will hold their annual business meeting and election of officers at the Community Hall, Saturday evening, March 22nd at 7 p. m. All members are urged to be present.  
Otto Gladden has purchased a Fordson tractor.  
× Mrs. Stuart Compton and children of Orofino, are visiting at the home of her parents, Mr. and Mrs. N. E. Ware.  
× A. W. Jones, road overseer, has done considerable road work within the past few weeks.  
× Mrs. Ed Lien left the first of the week for Moscow, where she is visiting at the home of Mrs. C. H. Kroening.

Have you heard the latest Brunswick records. They hit all phonographs. For sale at Kendrick Hardware Co. 12-1t

### There's a Difference

Merchants sometimes want to know why it is that a newspaper cannot print their advertisements for approximately the same rate per inch that an advertising sheet costs. One reason is that with every inch of advertising the newspaper must go from one to three inches of reading matter or illustrations for which the publisher must pay, but out of which he gets no revenue except such as the subscribers turn in. It is the reading matter by the way which gives the newspaper most of its value as an advertising medium.—Ex.

### Fertilizer for Cucumber

Rotted manure is an excellent fertilizer for cucumber plants. The mixing of acid phosphate with manure is to be advised. If added before the nitrogen has a chance to escape it will hold the nitrogen in the manure. Acid phosphate contains gypsum and gypsum has this same power to hold the nitrogen, but acid phosphate is more effective than is gypsum alone and, of course, contributes valuable phosphorus. Acid phosphate retards the fermentation of the manure.  
Acid phosphate may be added either before or after composting, and in either case is a valuable addition.

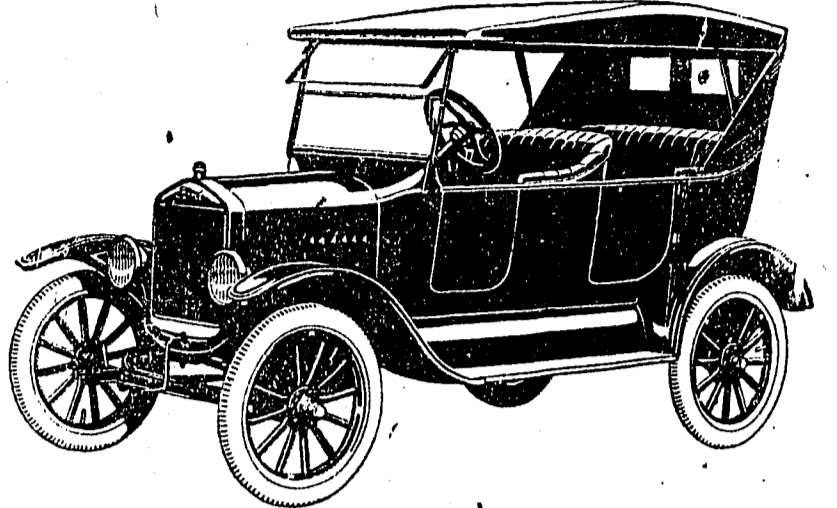
### Electric Light Bulbs.

The strength of the glass prevents an electric light bulb from bursting. When a bulb is broken with a blow, the "pop" is the result of the fact that the interior was not filled with air.

### They May Be Right.

Farmers have an idea that if other people would work as hard as farmers do they could pay the farmer twice as much for what he raises.

For Sale: Heavy draft team, weight about 3200. Inquire Gazette. 4-1f



Ford Touring Car F. O. B. Kendrick - - **\$478.00**

Filled with gas and oil.

**Kendrick Garage Company**  
Local Agents

## A Meal in Itself

There are toast dishes for desert, toast dishes for appetizers, and toast dishes that are wholesome meals in themselves.

Oysters Toast is a complete meal, with all the fragrant, crunchy goodness of golden-brown toast, combined with the inimitable flavor of plump oysters.

### Oyster Toast

2 slices Bread  
Hot buttered toast  
½ pint milk

¼ cup oysters  
Salt and Pepper  
to taste

Toast the bread to a golden brown and butter it as for ordinary toast. Add ¼ cup oyster water to the oysters and cook until plump. To this add the milk and reheat. Pour over the hot buttered toast and serve at once. Creamed salt codfish served on thin slices of toast also make a very palatable and dainty dish.

For best results use:

## Betsy Ross, Holsum, Tip-Top or Butternut Bread.

Eat More Bread  
Do it with Toast

For Sale by **N. B. Long & Sons**

Cut this out and paste it in your cook book.

## Kendrick Warehouse & Milling Co.

### Bean Cleaning a Specialty

We are showing a sample of Burbank hard white spring wheat. Come in and let us take your order.

### Have You Tried Our Chick Food?

Ground bone, shell, crystal grit, bone meal, meat scraps, charcoal, O. K. Scratch, mash food.

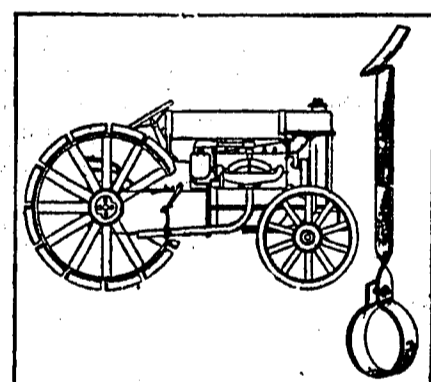
What About Idaho Best Flour? We Have it.

turned after accomplishing his mission, and shipments of parasitic material will begin to arrive in this country next spring. It is hoped by these means to supplement the good work of a parasite already introduced from France, and thus eventually to restore the balance of nature and secure natural control.

### Clutch-Holding Device Very Handy on Tractor

The Scientific American in illustrating and describing a clutch holder, the invention of F. F. Wunder, Valley Falls, Kan., says:

The invention relates to devices which are adapted for attachment to a tractor to engage a clutch control.



### Clutch-Holding Device for Tractor.

level of the tractor to releasably hold the latter in position to occasion the releasing of the driving connection between the engine of the tractor and the transmission thereof, without disengaging the gears of the transmission. A further object is to provide a clutch holder which comprises but a single piece of resilient material.

### Start Egg-Plant Early in Spring Under Glass

The egg-plant is a warm-weather plant as yet not acclimatized in the North. It should be started early, under glass. Plants should be "pricked off" when the second leaves appear, four inches apart, in boxes. "Pricking off" means removing the plants from their crowded position in the hotbed and placing at some distance apart in boxes or in flower pots. The boxes should be kept in a coldframe and plenty of light and air should be admitted on warm, sunny days in order to harden the plants. After frost danger is past and the soil is well warmed the plants may be transplanted. Care must be taken to avoid the use of extremely rich soil or the plants are likely to keep up their growth until too late in the season to escape the early fall frosts. The seed should be sown about April 10. A temperature of 65 to 70 degrees should be maintained in the hotbed.  
Plants should be set about three feet apart each way. A dozen plants are sufficient for the needs of a family. One ounce of seed will furnish 750 plants.

### The New Song.

When you're young you hear the name of the new song long before you hear it sung and whistled; when you are old, you hear it sung and whistled long before you hear its name.

## Continued Spread of Alfalfa Pest in West

### Damage by Weevil Cause of Apprehension.

(Prepared by the United States Department of Agriculture.)

Continued spread of the alfalfa weevil throughout the Great Basin states and the increasing damage which it is causing in some of these states, notably Idaho, have caused great apprehension, especially throughout the more newly infested regions. The insect, according to the United States Department of Agriculture, now occupies practically all the alfalfa-growing regions of Utah and Idaho, and is found in parts of Colorado, Wyoming and Nevada. It has also been discovered in eastern Oregon and more recently has been reported from Sierra county, Calif.

An efficient means of control has been evolved by the bureau of entomology of the department in the use of an arsenate of lead spray which usually gives satisfactory control when applied once during the season. In southwestern Idaho, however, it was discovered that two sprayings are necessary in order to obtain satisfactory control, because of the fact that the weevil continues laying eggs throughout a longer period than elsewhere. The one thing apparently needed in the aid of artificial control of the pest, says the department, is some more efficient means of placing the available information on control before the alfalfa growers who are most vitally concerned.

As an additional means of control, insect parasites of the alfalfa weevil will be introduced from Europe. An expert who was sent to France to complete arrangements for the introduction of these parasites has recently re-

with a KICK!  
**TEA**  
The National Cocktail

## Dress Pants For Men

Very beautiful patterns in spring fabrics in sizes for youths, young men and men. priced

**\$3.85 to \$6.50**

## Boys' Khaki Breeches

Laced leg, Pair **\$2.25**

Men's work pants in khaki and striped molskin at

**\$1.75 to \$3.75**

## SUGAR

Best Grade PER SACK

**\$10.45**

Net Cash

**Stanton Bros.**  
Where The New Things are Newest



Professional Cards

Dr. William T. Seeley Physician and Surgeon

Dr. Geo. W. McKeever DENTAL SURGEON

Dr. Jesse H. Burgess Your eyes given a thorough scientific EXAMINATION FREE

KENDRICK LODGE NO. 26. A. F. & A. M. Meets every second and last Thursday of the month

A. H. OVERSMITH Attorney-at-Law

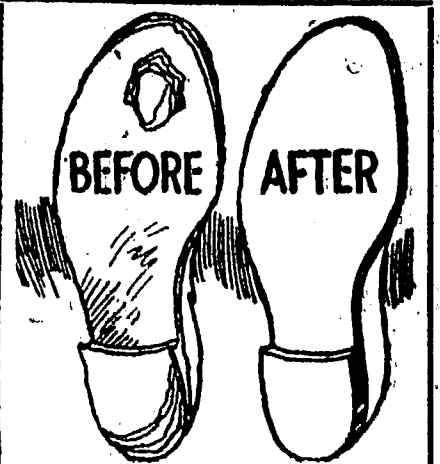
N. R. Shepherd The Auctioneer

Draying Residence Phone 654 Kendrick Dray and Ice Co.

Horseshoeing General Blacksmithing Wagon and Carriage Shop

Wm. H. Meyer Blacksmithing, Wagon Work and Horseshoeing

J. J. PICKERD Licensed Embalmer and Undertaker



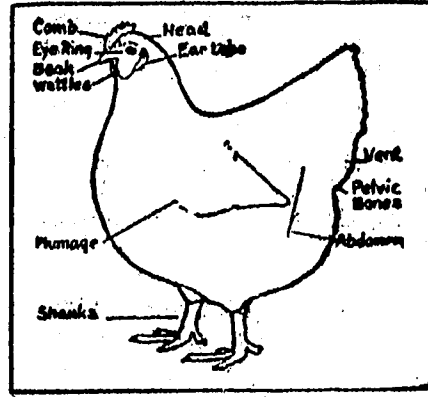
Real Economy It is a saving to you to have your shoes half soled before the welt is ruined.

Kendrick Harness Shop No Excitement. Methuselah lived over 900 years...

POULTRY

CULLING HEN FLOCK INCREASES PROFITS

The first essential for high egg production is healthy and vigorous stock, says H. M. Wells, the extension poultryman, of the University of Nebraska.



Points to Observe in Picking Out Layers.

be noted in yellow-skinned breeds. The heavy layers can usually be distinguished by the faded-out appearance of the vent, eye ring, beak, skin, and shanks.

Poultry profits are not based altogether on the number of hens in the flock, but rather on the number of eggs that the hens lay.

Avoid Chilling Eggs in Gathering for Hatching

(Prepared by the United States Department of Agriculture.) Eggs saved for hatching should be gathered often enough through the day to prevent any possibility of the germs being killed from becoming chilled.

It is also advisable to test the eggs in each setting for the removal of the infertile ones, which will give a better chance to those that are left.

In testing, the light shining through the egg held against the hole in the side of the box, shows the condition of the egg.

Feed Sprouted Oats to Poultry During Winter

The poultry raiser who has not yet adopted sprouted oats as a part of the hen's bill of fare, especially during the winter months, is not only depriving his hens of food that would be relished and which is most valuable in feeding for egg production...

Spring Range for Fowls Needed for Good Health

As soon as spring comes, the fowls should be given the range of a large yard where they can pick green food and dig for worms.

Making and Storing Ice for Summer Use

Method of Freezing in Cans or Paper Bags Outlined.

(Prepared by the United States Department of Agriculture.)

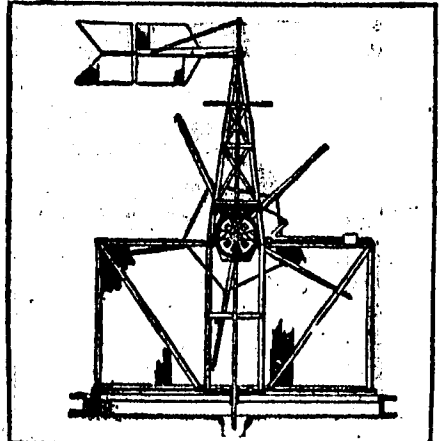
Furnishing the average farm with a sufficient supply of ice for use in the house and the dairy is a problem of considerable concern in many localities, especially where there are no ponds or streams from which a natural supply can be secured.

The cans may be made in any convenient size by a local tinsmith and should be of galvanized iron reinforced at top and bottom with iron strips.

About the same method is employed when special paper bags are used, although they do not last so long as the cans. Another method that can be used in very cold sections of the United States is to run water into the ice house and let a layer freeze.

New Invention Provides Adjustment on Windmill

The Scientific American in illustrating and describing an attachment for a windmill, the invention of I. P. Willman, Muleshoe, Texas, says:



Windmill Provided With Means for Self-Adjustment to the Wind.

vide a windmill having means whereby the same is positioned with relation to the wind and whereby the same may be thrown out of gear during a storm or high wind.

Sweet Soil Is Necessary for Many Garden Crops

Your garden may not be acid, but if it has been kept pretty rich the chances are it is. When manure and green crops are plowed under they decay and make for acidity.

Skim Milk Valuable for Feeding Young Animals

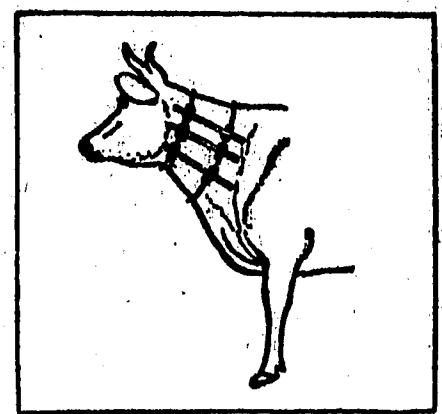
Skim milk is worth very much more for feeding to pigs and calves than to dairy cows, but when a surplus is at hand it is all right to use it.

DAIRY HINTS

Device to Prevent Cow From Sucking Herself

It is annoying to say the least when a cow contracts the habit of robbing her own dairy and how best to stop the vice is a problem.

When a cow sucks herself there are various methods of prevention, each of which has its advocates. We have often had good results from simply putting an old horse collar upside down on the cow's neck.



'Necklace' Prevents Cow From Sucking Herself.

In the round sticks, or tied around the laths, weave them to form an open fence-like necklace to be placed around the cow's neck and secured there by tying together the free ends of the cords.

A simpler plan is to put a bull ring in the cow's nose and hang another ring from the first one.

The old-fashioned plan of splitting the cow's tongue for a distance of one and one-half to two inches from its tip has of recent years been improved upon by trained veterinarians who perform the operation according to modern methods of surgery.

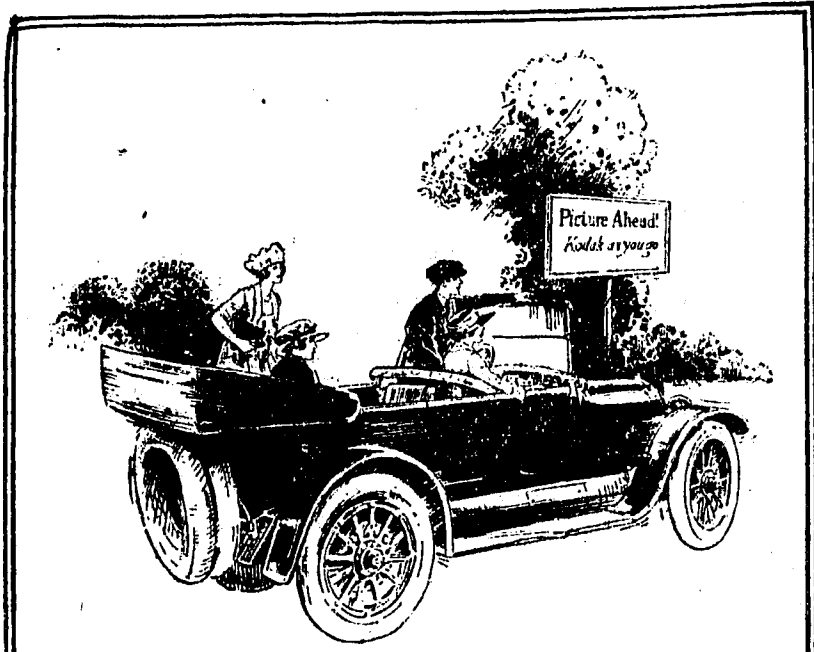
Superior Formula Given to Treat Garget in Cow

Garget often causes considerable loss in the herd. When an animal is found to be suffering from this trouble she should be milked after the remainder of the herd, as the disease may be carried on the hands.

Mix eight ounces of vasoline, eight ounces of wool fat, two fluid ounces belladonna, two fluid ounces extract poke root; warm and mix.

Cause of Slimy Milk. Slimy orropy milk is caused by germs that get into the milk after it has been drawn from the cow.

Sugar Beets for Milk. Sugar beets are somewhat more valuable for milk production than are mangels.



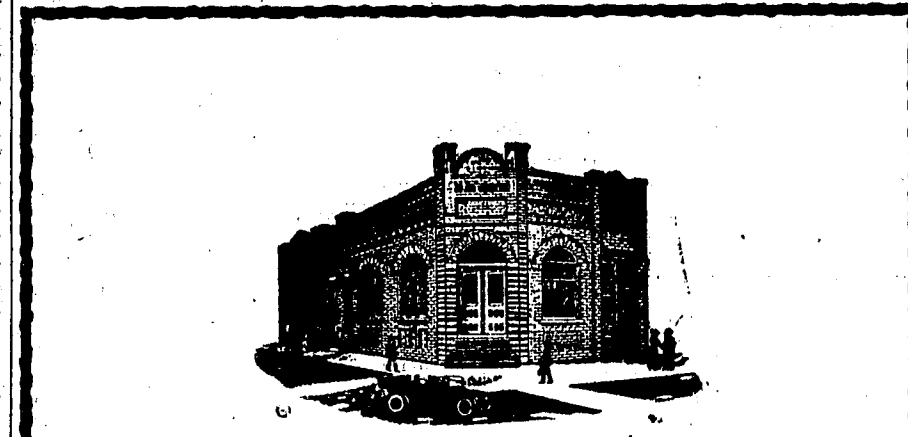
The lens sees with you—the autographic record remembers for you when you

Kodak as you go

Our store is so conveniently located that it is pretty sure to be 'right on your way.' Stop off a few minutes. The Kodak you want is here.

Kodaks from \$8.00 up Brownies from \$2.00 up

Red Cross Pharmacy



Confidence

We ask for new business because we are capable of rendering the best banking service and accommodations and because we offer that high measure of security that appeals to the prudent and conservative people of this community.

We have no projects to which our resources are diverted contrary to conservative banking principles.

The Kendrick State Bank

Martin V. Thomas, President K. D. Ingle, Vice-Pres.

A. H. Daubenberg, Cashier

Kendrick, Idaho

Adventure. Most housebreaking must be for the sake of adventure.

McDowell's Commercial Hotel Breakfast 7 to 9:30 Dinner 11:30 to 2:30 Lunches 30c

FOR OVER 40 YEARS HALL'S CATARRH MEDICINE has been used successfully in the treatment of Catarrh.

G. F. Walker Real Estate and Insurance Kendrick, Idaho



