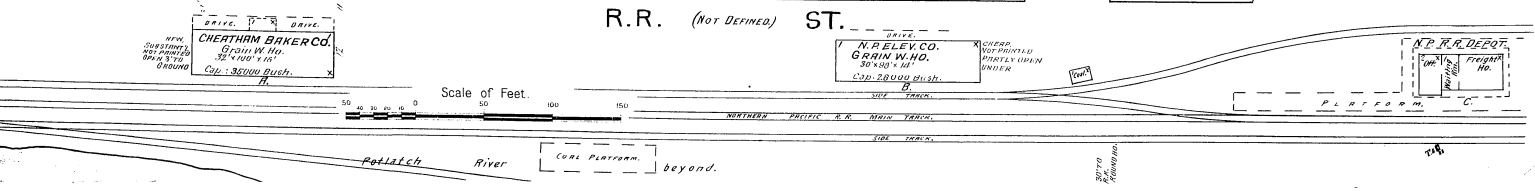
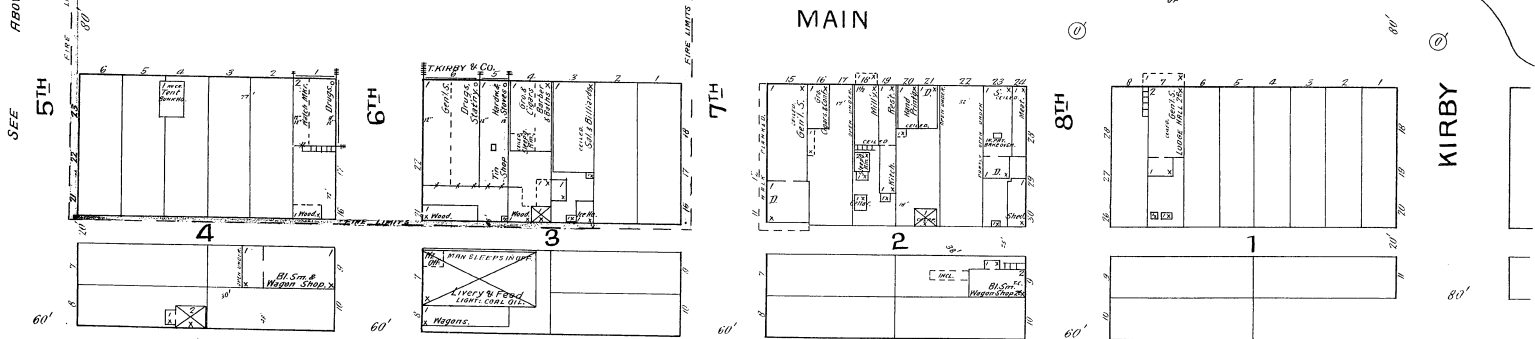
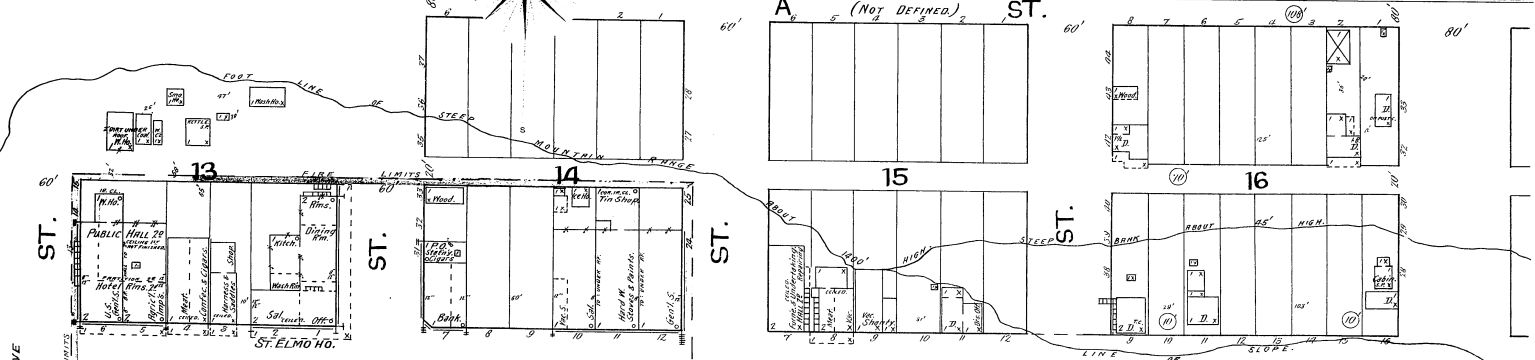
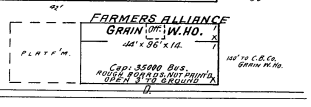
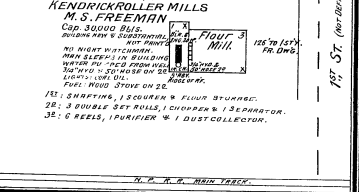
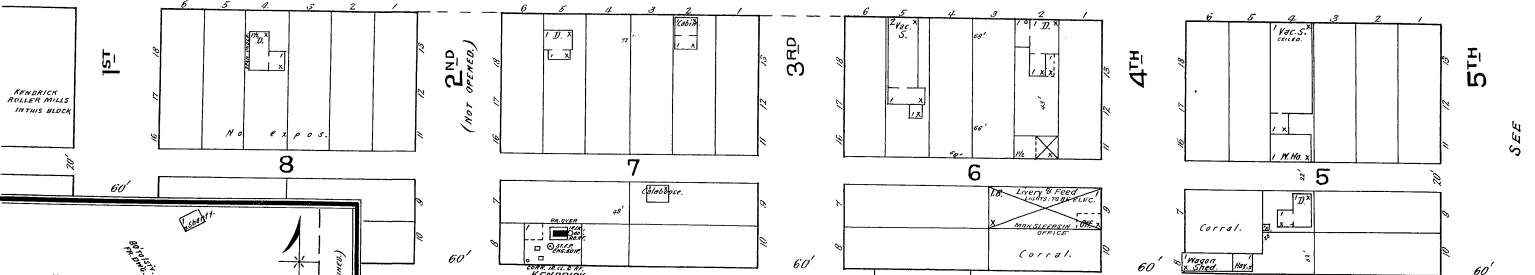
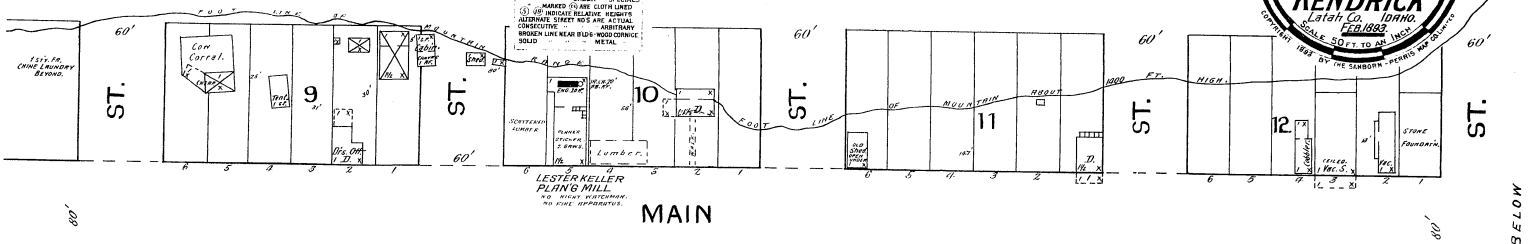


KEY

1	FIRE WALL ON AN ROOF
2	FRAMING PARTITION
3	WEAPONS & IRON DOOR
4	STAIRS
5	WINDOWS - SHUTTERS
6	STABLE
7	WINDOW IN 1 ST STORY
8	2 1/2" x 4" S.
9	BLUE COLORED YELLOW AND TRANCE
10	RED BRICK
11	BLUE BRICK
12	STONE
13	GLASS
14	IRON
15	BROWN
16	ADOBES
17	SPECIALS
18	MARKED BY AN OVAL LINED
19	ORBITARY
20	ALTERNATE STREET NOS ARE ACTUAL
21	CONCRETE
22	BROAD LINE NEAR BLUE WOOD CORNICE
23	METAL

Note -
 WATER FACILITIES, POWER TOWERS ONLY, NO FIRE
 HOSES LINED BLUE & CONCRETE BUSINESS PROPERTY
 OF THIS BLOCK, EXCLUDED ON N.E. SIDE BY MOUNTAIN
 RANGE. ROAD, FORMERLY RAILROAD, EXISTING
 TO BE FOR THE USE OF THE RAILROAD SYSTEM. PROPERTY
 A RESERVATION FILLED BY RAILROAD COMPANY. UNLESS LOCATED
 AND MADE MARK OF COURSE PARTICIPATING IN THE BLOCK
 UPON AS KEY, FIRE LINES INDICATED BY DOTTED LINE.



13576

(6047)

13517
13516

SEE BELOW

SEE ABOVE

KIRBY

24